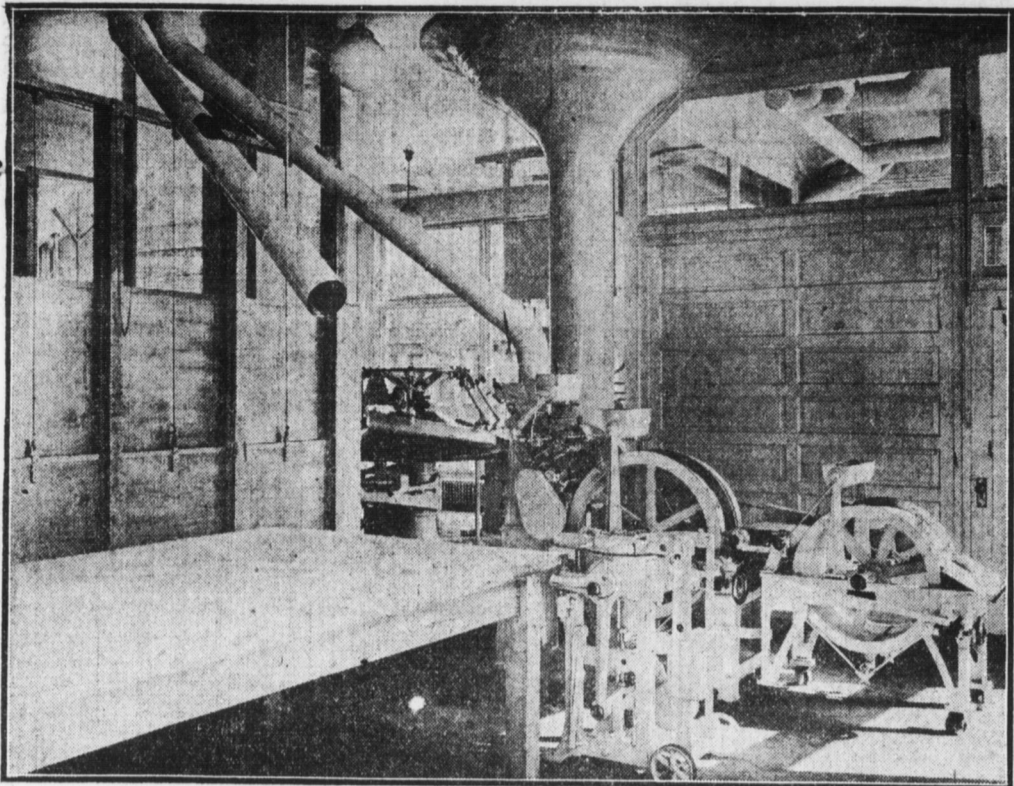


THIS IS WHERE THE FULL-FORMED LOAF APPEARS



The final process in the formation of the loaf, before it is placed in steaming room and oven. The dough drops through the pipe shown in the picture and the machine below moulds it in its final shape.

"Barrett Specifications" Roofing Material Used on New Baking Plant

If it came to a showdown as to who played the most important part in the construction of the new Standard Baking Company's plant, chances are the Worden Paint and Roofing Company would come in for a big

share of the honors. They are responsible for the "Barrett Specifications" Felt, Pitch, and Slag Roofing, laid over a concrete base, as called for in the architect's specifications. The process used in the construction of this roofing material has been known for upwards of sixty years, having been discovered shortly before the outbreak of the great Civil War. From time to time, of course, this formula has been improved upon but is fundamentally the same as when first put into practical commercial use.

ELECTRICAL WORK IMPORTANT ITEM

Dauphin Electrical Supplies Company Which Did It Has Many Big Contracts

In the completion of the massive home of the Standard Baking Company, no contractor played a more prominent part in finishing the building than did the Dauphin Electrical Supplies Company, of which John S. Musser is president. The company did all of the wiring in the building and installed the motors and various other necessary electrical equipment. The Dauphin Electrical Supplies Company, located at 434 Market street, is one of the largest concerns of its kind in the East and not only enters to trade in Harrisburg, but also does business all over Pennsylvania. In selecting a contractor to do the electrical work in the new bakery, it was necessary that those familiar with electrical construction in big buildings be considered and from this group Mr. Musser's company was selected. The Dauphin concern also did the work in the Emerson-Brantingham building, the Colonial Theater, the Dives, Pomeroy & Stewart store, the Y. W. C. A. building, the Harrisburg Storage Company, Schmidt's bakery, the Boyd Memorial building, the Harrisburg Academy, Bowman & Co.'s store and in practically all of the big buildings in the city. The company also caters to the lesser trade and the thirty skilled electricians employed are kept busy wiring the big buildings and residences. The company's store is one of the best stocked in the eastern part of the United States and any kind of fixtures, appliances or supplies are to be found there. In the store a dozen clerks are employed. During the past few years the electrical business has made rapid strides and the Dauphin company has been going the pace, too. In 1898 the Arrowsmith Electrical Company opened a store in Market Square and in 1901 Mr. Musser became its manager. In 1904 the business was moved to 434 Market street and three years later the company was reorganized as the Dauphin Electrical Supplies Company. Mr. Musser was made its president. The business at that time was comparatively small but it grew steadily until it compares favorably with any concern of its kind in the country.

No Accidents During Process of Building Standard's New Plant

The Fidelity and Deposit Company's more than twelve million dollars of assets and an underwriting experience of 25 years were back of the public and employer's liability policies held by the Standard Baking Company during its building operations and speak well for the management of the latter that not a single accident occurred.

The Fidelity Company, represented in Harrisburg and throughout a large Pennsylvania territory by G. L. Culmery, as general agent, has likewise grown to be a landmark and one of the leading institutions not only of its home city—Baltimore—but of the whole country, with agencies in every State, in every important city and town, in Canada, Great Britain, France, Germany, Austria and Russia. The company writes, as surety, every class of fidelity, judicial, contract, official, government and miscellaneous bonds; and also accident, health, automobile, burglary, plate glass, liability and workmen's compensation insurance.

It is frequently spoken of as the largest and strongest surety and casualty company in the world. Mr. Culmery has represented the concern in Harrisburg for upwards to ten years.

Bogar Lumber Co. Plays a Part in Standard Baking Company's New Plant

Into the construction of the Standard Baking Company's new building has been incorporated a vast amount of rough lumber and mill work, a great portion of which was supplied by the Bogar Lumber Company, of this city. The Bogar Lumber Company, one of the largest lumber concerns in Central Pennsylvania, was organized about seven years ago and from its early stages of inconsequential size it has been developed to its present huge proportions, through the persistent efforts of its founder and present manager, Thomas H. Bogar. A great number of Harrisburg's most prominent business buildings and private dwellings have had all of the lumber in their construction supplied by this concern, among them being the immense Harrisburg Storage Warehouse, the Vernon street school building, Highspire school building, and the handsome Slavonic Home at Jednota.

STANDARD'S SEVEN GIGANTIC OVENS

Equipment Includes Modern Ovens of 40,000 Loaves Daily Capacity

Undoubtedly one of the most important factors of the modern bakery such as the Standard Bakery, is the ovens in which the bread is baked. The equipment of the Standard Baking Company's new plant includes seven monster ovens, furnished by the Standard Oven Company, of Pittsburgh, Pa., one of the largest concerns of its kind in the country. These ovens are finished on the exterior in a highly glazed tile and presents an altogether handsome appearance. These ovens have a capacity for baking 40,000 loaves daily. A. F. Harzell, general manager of the Standard Oven Company, while in Harrisburg the other day to personally inspect the new ovens, in discussing the product of his concern, said to a Telegraph representative: "Aside from those used by the Standard Baking Company, upward to a thousand of our ovens are in use in the Eastern section of the country alone. These were not selected because of their moderate price, but rather, because of their daily performances for some of the larger bakeries. Standard ovens are of the arch-top (continuous) type, of massive construction, the very best grade of special firebrick being used

exclusively. Extra heavy steel tie-rods and buckstays are employed as additional reinforcements. Our perfected furnaces enables the Standard oven to burn any kind of fuel—coal, gas or wood—and the furnace may be built in the front or rear of the oven or in the basement of the building. A thermometer is provided, giving at all times the exact temperature of the baking chamber. Every particle of heat is employed directly in baking—absolutely none is wasted, and a new insulating material is used which insures this result."

BOGAR LUMBER CO.

Supplied All Lumber For the New

Standard Baking Co. Building

We carry the largest stock in the city of all kinds of Lumber, Mill Work, Stucco Board, Wall Board and Roofing. Estimates furnished on request.

North Sixth Street

Both Phones

The ELECTRICAL WORK in the Standard Baking Company's New Building

was installed by the

Dauphin - Electrical - Supplies - Co.

JOHN S. MUSSER, President

434 Market St.,

Harrisburg, Penna.

"THE EXPERT ELECTRICIANS"

Electrical Lighting Fixtures and Supplies

OTHER RECENT CONTRACTS COMPLETED AND UNDER WAY

- Y. W. C. A. Building, Harrisburg, Pa.
Harrisburg Storage Company, Harrisburg, Pa.
Emerson-Brantingham Building, Harrisburg, Pa.
Colonial Theater, Harrisburg, Pa.
Victoria Theater, Harrisburg, Pa.
Regent Theater, Harrisburg, Pa.
Kestler Apartments, Harrisburg, Pa.
Boyd Memorial Building, Harrisburg, Pa.
New Dormitory, Harrisburg Academy, Harrisburg, Pa.
Daman Cottage, Elizabethtown, Pa.
P. R. B. Passenger Station, Elizabethtown, Pa.
Manheim High School, Manheim, Pa.
Mount Carmel High School, Mt. Carmel, Pa.
Shamokin High School, Shamokin, Pa.
Towanda High School, Towanda, Pa.
Canton High School, Canton, Pa.
Highspire High School, Highspire, Pa.
Newville High School, Newville, Pa.
Camp Hill High School, Camp Hill, Pa.
Wm. Strouse & Company, Harrisburg, Pa.
Hershey Creamery, Hershey, Pa.
Cadillac Garage, Harrisburg, Pa.
Albert Schaffer, blacksmith shop, Harrisburg, Pa.
Dauphin Cigar Co., Harrisburg, Pa.
C. Harry Kain, residence, Harrisburg, Pa.
Mrs. Parthine B. Wright, residence, Harrisburg, Pa.
A. E. Shirey, residence, Harrisburg, Pa.
G. E. Rutherford, residence, Harrisburg, Pa.

- Prof. Dennis, residence, Camp Hill, Pa.
The five Bretz residences, Camp Hill, Pa.
Mrs. Dale's residence, Camp Hill, Pa.
James McCullough, residence, Harrisburg, Pa.
Fred Tritle, residence, Harrisburg, Pa.
M. J. Kast, residence, Harrisburg, Pa.
Majestic Theater, Harrisburg, Pa.
Bowman & Co., Harrisburg, Pa.
Fry Theater, Steelton, Pa.
Odd Fellows Hall, Harrisburg, Pa.
Zion Lutheran Church House, Harrisburg, Pa.
U. B. Church, Mt. Joy, Pa.
Kresge Five and Ten, Harrisburg, Pa.
D. P. & S. Store, Harrisburg, Pa.
School of Mines Building, State College, Pa.
Oliver Chilled Flow Co., Harrisburg, Pa.
Sylvan Heights Orphanage, Harrisburg, Pa.
Robert Packard Hospital, Sayre, Pa.
Evangelical Church, Lewisburg, Pa.
Vernon School Building, Harrisburg, Pa.
Clark's Drug Store, Harrisburg, Pa.
Forney's Drug Store, Harrisburg, Pa.
Young Apartment House, Harrisburg, Pa.
D. Bacon Candy Co., Harrisburg, Pa.
A. S. Kreider Shoe Co., Middletown, Pa.
W. L. Kreider Shoe Co., Palmyra, Pa.
Contracts on hand for about 30 residences

Fidelity and Deposit Co. Of Maryland

Resources, \$12,282,427.16

Guaranteed the Standard Baking Company management against loss through accidents to workmen and the public.

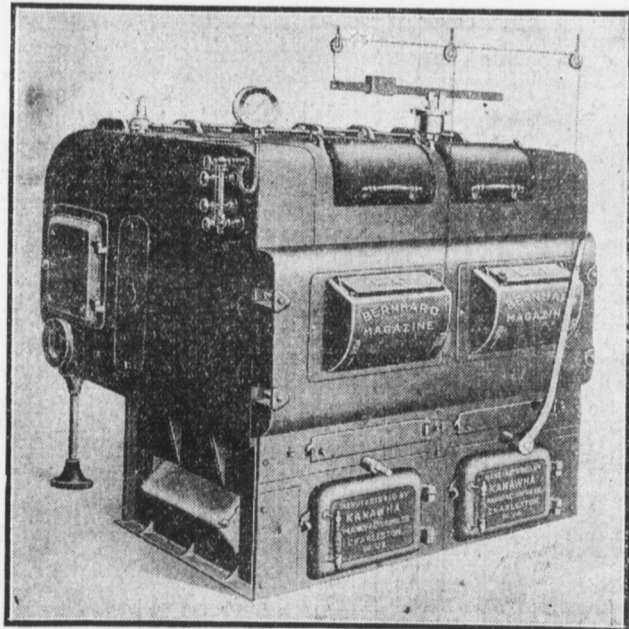
Surety on all classes of Fidelity, Judicial, Contract, Official, Government and Miscellaneous Bonds.

Representatives in all parts of the world.

Undertakings promptly executed and fully completed at this office.

G. L. CULMERY, General Agent Commonwealth Trust Bldg.

The Boiler That Heats the Big Bakery



The Bernhard Water Tube Boilers

Burns cheapest grades of coal and less of it than any other boiler made.

Made in 500 different sizes.

All buildings of the better class are heated with Bernhard boilers.

The peculiar construction of the boiler takes all the heat out of the smoke, which means that every heat unit in the coal is absorbed by the water.

The fact that these boilers stand very low adds another distinct feature of convenience.

CO-OPERATIVE HEATING CO.

L. H. Thomas Bell Phone 3889 Harrisburg, Pa.

Mentzer--Romberger Manufacturing Co.

Supplied All of the

Face Brick and Trimming Stone

of the New Standard Baking Company Building

For years this company has been successful in securing the contracts for the trimmed stone and face brick for many of the leading buildings in Pennsylvania and other States.

In addition to the Standard Baking Company's new building, are such as School-houses, churches, colleges, office buildings and fine dwellings.

EIGHTEENTH AND CHESTNUT STREETS

Bell Phone