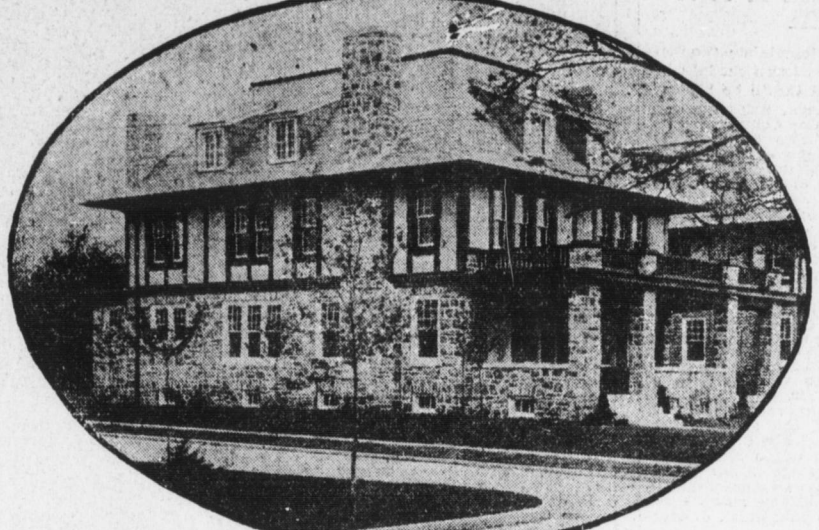


HOMES OF REFINEMENT



These Artistic Homes are located in the restricted residential section, north of Briggs street, on Seventeenth st. Open for inspection at an time. See them at your convenience.

GEORGE A. SHREINER, SEVENTEENTH and FORSTER STREETS

101 INDICTMENTS AGAINST BREWERS

(Continued from First Page)
timated, can be collected if convictions are obtained. No individuals are mentioned in the indictments.

Immediately after returning the indictments, the grand jury, which is the one which indicted Josiah V. Thompson, the Uniontown banker and has been in steady session for about six weeks, was discharged.

The indictments came up in four presentations attacking the different brewing companies separately, as they were members either of the United States or the Pennsylvania Brewers' Association, the two which the grand jury has been probing.

Camp Hill

The Suburb of Natural Beauty; go out with us and inspect our new addition, "Cooper Heights," with its concrete walk, electric lights, water and gas with its fine buildings and bungalow sites.

West Shore Realty Co.

Bear & Rice
Lemoyne Trust Co. Building
Lemoyne, Pa. Bell Phone 3198-J

For Sale

No. 206 Walnut Street
Fronting 32 feet 9 inches, extending through the same width to Locust street.

Applications For Renting

First floor and basement may be considered. Floor area about 5,272 square feet, including show windows.

Act Promptly

You will have a chance to secure one of the following properties:
1818 Green St. — 3-story brick house, 9 rooms and bath, all improvements, side entrance, front porch, splendid condition, excellent location.

M. A. Fought

272 NORTH ST.

the United States Brewers' Association but not the Pennsylvania Brewers' Association, because the first is a corporation and the other is not.

Fifty-eight brewing companies, members of the Pennsylvania Brewers' Association, and forty-two brewing companies, members of the United States Brewers' Association, with the brewery association itself, are indicted.

Three big brewing companies of Pittsburgh, the Pittsburgh, the Independent (Jim Mulvihill's concern) and the Fort Pitt Brewing Company, are indicted.

Others are distributed among the larger centers throughout the commonwealth, as follows:
Philadelphia: American Brewing Company, J. & P. Baltz Brewing Company, Louis Bergdoll Brewing Company, Bernier & Engel Brewing Company, Class & Nachod Brewing Company, Consumers' Brewing Company, Fred Fell Brewing Company, Theodor Finkenauer Brewing Company, Leiber & Oertel Brewing Company, Philadelphia Brewing Company, Premier Brewing Company, Rieger & Gretz Brewing Company, Peter Schemm & Son, branch brewing company, C. Schmidt & Sons Brewing Company, Robert Smith Ale Brewing Company, Weissbrod & Hess Brewing Company, F. A. Poth & Sons, Inc., Prospect Brewing Company.

REAL ESTATE FOR SALE

Kensington Street—Nos. 2020 and 2022: 2½-story frame, 6 rooms, water, porch, side entrance. Rent, \$10.50 each. Price, \$1,350 each.
Disbrow Street—No. 75: corner; two-story brick dwelling with 7 rooms and bath. An attractive little home for \$2,400.

J. E. Gipple

Bell Phone 1251 MARKET ST.

SMALL FARM FOR SALE

One mile south of Grantham Station on the P. & R. Railway. 100 grape vines, 160 pear, 60 sour cherry, 30 sweet cherry, 50 quince, 200 plum, 50 peach, 160 apple trees; gooseberries, currants, red and black raspberry patch, strawberry patch, flowers and fine lawn. Good buildings and never-failing well of water. Would make an ideal summer home. For particulars, see

Prospect Hill Cemetery

MARKET AND 26TH STREETS
This cemetery is soon to be enlarged and beautified under plans prepared by Warren H. Manning. Lots will be sold with the perpetual care provision.

Prospect Hill Cemetery Co.

REAL ESTATE

FEBRUARY 1916 BREAKS RECORD

Nearly \$5,000,000 Increase in Building and Engineering Operations

Building and engineering contracts awarded during the month just passed for Eastern Pennsylvania, Southern New Jersey, Maryland, Delaware, District of Columbia and Virginia amounted to nearly \$5,000,000 more than the business authorized during the same month of 1915, according to the comparative statistics compiled by the F. W. Dodge company.

During the past month the contracts awarded totaled \$11,869,000; in February, 1915, they amounted to \$6,950,000; in 1914, \$7,245,000; in 1913, \$6,685,000; 1912, \$10,484,000; 1911, \$7,172,500; 1910, \$6,275,500.

Indicted in U. S. Association

As members of the United States Brewers' Association, the following Pennsylvania brewing companies are indicted:
Pittsburgh Brewing Company, Independent Brewing Company, Erie Brewing Company, Daeufer Brewing Company, Horlacher Brewing Company, Liebert & Oertel Brewing Company, South Bethlehem Brewing Company, Uhl Brewing Company, Anchor Brewing Company, Brownsville Brewing Company, Keystone Brewing Company, Saxe Brewing Company, Westmoreland Brewing Company, Bartels Brewing Company, Schwarzenbach Brewing Company, Fink Brewing Company, Susquehanna Brewing Company, Adam Scheidt Brewing Company, Northampton Brewing Company, American Brewing Company, J. and P. Baltz Brewing Company, Louis Bergdoll Brewing Company, Bernier & Engel Brewing Company, Class and Nachod Brewing Company, Consumers Brewing Company, Continental Brewing Company, Fred Fell Brewing Company, Liebert and Oertel Brewing Company, Philadelphia Brewing Company, Premier Brewing Company, Prospect Brewing Company, Proto Brewing Company, Rising Sun Brewing Company, C. Schmidt & Sons Brewing Company, Robert Smith Ale Brewing Company, Reading Brewing Company, Rockwood Brewing Company, Saxe Brewing Company, Westmoreland Brewing Company, Bartels Brewing Company, Stegmaler Brewing Company, Flock Brewing Company and Koch Brewing Company.

In the charge against brewing companies, these specific offenses are set out:
That the brewing companies conspired to make money contributions to the election of November 3, 1914, a State election.

That the Independent Brewing Company, of Pittsburgh, on May 7, 1914 paid \$7,321.82 in check drawn on the German National Bank of Pittsburgh, and paid to the United States Brewers' Association, for political use; that this check was indorsed over to the Northwestern National Bank, of Philadelphia, by Treasurer G. W. Lembeck of the United States Brewers' Association.

Evidence of Conspiracy
These were all the specific offenses set out, but the government is declared to have massed evidence of a complete case of conspiracy, at least as it affects the brewing companies.

REAL ESTATE

FEBRUARY 1916 BREAKS RECORD

Nearly \$5,000,000 Increase in Building and Engineering Operations

Building and engineering contracts awarded during the month just passed for Eastern Pennsylvania, Southern New Jersey, Maryland, Delaware, District of Columbia and Virginia amounted to nearly \$5,000,000 more than the business authorized during the same month of 1915, according to the comparative statistics compiled by the F. W. Dodge company.

During the past month the contracts awarded totaled \$11,869,000; in February, 1915, they amounted to \$6,950,000; in 1914, \$7,245,000; in 1913, \$6,685,000; 1912, \$10,484,000; 1911, \$7,172,500; 1910, \$6,275,500.

Indicted in U. S. Association

As members of the United States Brewers' Association, the following Pennsylvania brewing companies are indicted:
Pittsburgh Brewing Company, Independent Brewing Company, Erie Brewing Company, Daeufer Brewing Company, Horlacher Brewing Company, Liebert & Oertel Brewing Company, South Bethlehem Brewing Company, Uhl Brewing Company, Anchor Brewing Company, Brownsville Brewing Company, Keystone Brewing Company, Saxe Brewing Company, Westmoreland Brewing Company, Bartels Brewing Company, Schwarzenbach Brewing Company, Fink Brewing Company, Susquehanna Brewing Company, Adam Scheidt Brewing Company, Northampton Brewing Company, American Brewing Company, J. and P. Baltz Brewing Company, Louis Bergdoll Brewing Company, Bernier & Engel Brewing Company, Class and Nachod Brewing Company, Consumers Brewing Company, Continental Brewing Company, Fred Fell Brewing Company, Liebert and Oertel Brewing Company, Philadelphia Brewing Company, Premier Brewing Company, Prospect Brewing Company, Proto Brewing Company, Rising Sun Brewing Company, C. Schmidt & Sons Brewing Company, Robert Smith Ale Brewing Company, Reading Brewing Company, Rockwood Brewing Company, Saxe Brewing Company, Westmoreland Brewing Company, Bartels Brewing Company, Stegmaler Brewing Company, Flock Brewing Company and Koch Brewing Company.

In the charge against brewing companies, these specific offenses are set out:
That the brewing companies conspired to make money contributions to the election of November 3, 1914, a State election.

That the Independent Brewing Company, of Pittsburgh, on May 7, 1914 paid \$7,321.82 in check drawn on the German National Bank of Pittsburgh, and paid to the United States Brewers' Association, for political use; that this check was indorsed over to the Northwestern National Bank, of Philadelphia, by Treasurer G. W. Lembeck of the United States Brewers' Association.

Evidence of Conspiracy
These were all the specific offenses set out, but the government is declared to have massed evidence of a complete case of conspiracy, at least as it affects the brewing companies.

REAL ESTATE

FEBRUARY 1916 BREAKS RECORD

Nearly \$5,000,000 Increase in Building and Engineering Operations

Building and engineering contracts awarded during the month just passed for Eastern Pennsylvania, Southern New Jersey, Maryland, Delaware, District of Columbia and Virginia amounted to nearly \$5,000,000 more than the business authorized during the same month of 1915, according to the comparative statistics compiled by the F. W. Dodge company.

During the past month the contracts awarded totaled \$11,869,000; in February, 1915, they amounted to \$6,950,000; in 1914, \$7,245,000; in 1913, \$6,685,000; 1912, \$10,484,000; 1911, \$7,172,500; 1910, \$6,275,500.

Indicted in U. S. Association

As members of the United States Brewers' Association, the following Pennsylvania brewing companies are indicted:
Pittsburgh Brewing Company, Independent Brewing Company, Erie Brewing Company, Daeufer Brewing Company, Horlacher Brewing Company, Liebert & Oertel Brewing Company, South Bethlehem Brewing Company, Uhl Brewing Company, Anchor Brewing Company, Brownsville Brewing Company, Keystone Brewing Company, Saxe Brewing Company, Westmoreland Brewing Company, Bartels Brewing Company, Schwarzenbach Brewing Company, Fink Brewing Company, Susquehanna Brewing Company, Adam Scheidt Brewing Company, Northampton Brewing Company, American Brewing Company, J. and P. Baltz Brewing Company, Louis Bergdoll Brewing Company, Bernier & Engel Brewing Company, Class and Nachod Brewing Company, Consumers Brewing Company, Continental Brewing Company, Fred Fell Brewing Company, Liebert and Oertel Brewing Company, Philadelphia Brewing Company, Premier Brewing Company, Prospect Brewing Company, Proto Brewing Company, Rising Sun Brewing Company, C. Schmidt & Sons Brewing Company, Robert Smith Ale Brewing Company, Reading Brewing Company, Rockwood Brewing Company, Saxe Brewing Company, Westmoreland Brewing Company, Bartels Brewing Company, Stegmaler Brewing Company, Flock Brewing Company and Koch Brewing Company.

In the charge against brewing companies, these specific offenses are set out:
That the brewing companies conspired to make money contributions to the election of November 3, 1914, a State election.

That the Independent Brewing Company, of Pittsburgh, on May 7, 1914 paid \$7,321.82 in check drawn on the German National Bank of Pittsburgh, and paid to the United States Brewers' Association, for political use; that this check was indorsed over to the Northwestern National Bank, of Philadelphia, by Treasurer G. W. Lembeck of the United States Brewers' Association.

Evidence of Conspiracy
These were all the specific offenses set out, but the government is declared to have massed evidence of a complete case of conspiracy, at least as it affects the brewing companies.

Morgan E. Gable, Noted Newspaperman, Dead

Many Harrisburgers were grieved to-day to learn of the sudden death of Morgan E. Gable, Pittsburgh's foremost newspaperman and well known to men in business and politics throughout Pennsylvania. Mr. Gable was a frequent visitor to Harrisburg and had a grasp of State affairs possessed by few men. He had been ill only a few weeks and his death followed an effort to resume his work.

Mr. Gable was born on Good Friday, April 13, 1852, at Strasburg, Lancaster county. He was the son of Professor William Henry and Sarah Morgan Gable, both his parents being educators. At the age of 14 he quit school to learn the printing trade in the office of the Courier, in Tanawana, Pa., to which town his parents had removed. He learned his trade thoroughly, including job work and steam press running. When only 19 years of age, without previous experience in daily newspaper work, he was made managing editor of the Reading (Pa.) Herald, which place he retained until November 12, 1887, when he went to Pittsburgh and became connected with the Pittsburgh Commercial Gazette.

SOON TIRED.

So Kitty is back from the front. Yes, she could not find anybody interesting or romantic to nurse.



For Sale

No. 206 Walnut Street
Fronting 32 feet 9 inches, extending through the same width to Locust street.

Applications For Renting

First floor and basement may be considered. Floor area about 5,272 square feet, including show windows.

Act Promptly

You will have a chance to secure one of the following properties:
1818 Green St. — 3-story brick house, 9 rooms and bath, all improvements, side entrance, front porch, splendid condition, excellent location.

M. A. Fought

272 NORTH ST.

Act Promptly

You will have a chance to secure one of the following properties:
1818 Green St. — 3-story brick house, 9 rooms and bath, all improvements, side entrance, front porch, splendid condition, excellent location.

M. A. Fought

272 NORTH ST.

SUBURBAN CITY

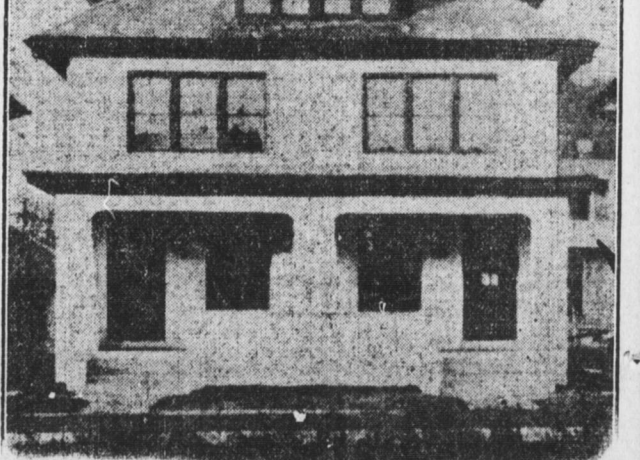
Home in Camp Hill and when we say Home, we mean every word of it. Reception hall, open stairway, parlor, fireplace, dining room, kitchen, three bedrooms, bathroom, attic, hot water heat, poultryhouse, fruit, Lot 50x150, one minute walk to car line.

RETTEW & BUSHNELL

1000 N. THIRD ST. Bell Phone 2596; United 555-X
Insurance Real Estate Steamship Tickets
Two of the Best Located Lots in Bellevue Park.

REAL 1916 HOMES

In Heart of Residential Section, 16th and Forster Streets



Exclusive design; perfect workmanship; best grade of materials; hardwood floors, and every feature that you would anticipate in a modern home.

BURTON VANDYKE

BUILDER and OWNER
900 North Sixteenth Street

M. A. Fought

272 NORTH ST.

Miller Brothers & Co.

Locust and Court Sts. Bell Phone, 1595