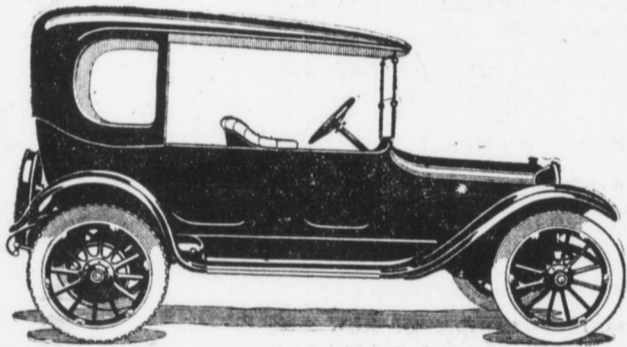


# DODGE BROTHERS CLOSED CAR

As the thermometer shifts you can change from a cold to a warm weather car—or back again.

Suppose you have a very warm week, as in the early days of spring last year. Take off the side panels. If the temperature drops sharply — put them on again.

The tire mileage is unusually high  
The price of the Closed Touring Car or Roadster complete, including regular mohair top, is \$950 (f. o. b. Detroit)  
The price of the Touring Car or Roadster complete is \$785 (f. o. b. Detroit)



**Keystone Motor Car Co.**  
1019-1029 MARKET ST.  
Bell Phone 1850 United 397Y  
C. H. BARNER, Manager

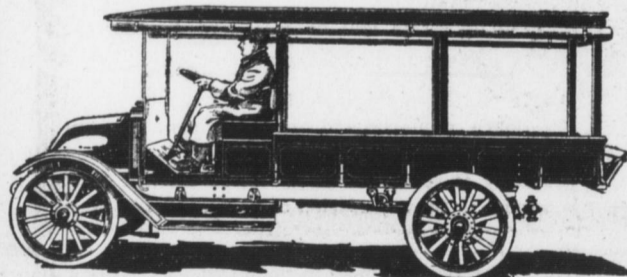
## The AUTOCAR TRUCK

has the Capacity, Power, Simplicity of Control Accessibility and Ruggedness of Parts—Gives Efficient Service under all conditions, even when subjected to overloading or other similar abuses.

IT PAYS TO INVEST IN  
**THE AUTOCAR**  
For Business Expansion

Andrew Redmond, Distributor Third and Boyd Sts.

## Big Truck Exhibit At No. 619-21 Walnut St.



More than Ten Thousand (\$10,000.00) Dollars was the amount of International motor truck sales at this headquarters, Tuesday, February 22, and all sales were repeat orders from firms knowing the high quality SERVICE and low up-keep expense of International trucks.

The basis of International Motor Trucks—SUCCESS is SERVICE.

The leading business firms to-day admit the superiority of the International line and will pay you to see them now on exhibit at 619-21 Walnut street.

All models furnished with low wheels, solid or pneumatic tires.

**International Harvester Company of America**  
(INCORPORATED)

Motor Truck Department, 619-21 Walnut St.  
Other branch houses at Pittsburgh, Philadelphia, Elmira, Baltimore and Parkersburg.

## SORTING RESPONSES TO BIG AUTOMOBILE SHOW CONTEST



With its automobile show edition of Saturday last, the Harrisburg Telegraph retained its leadership of the past four years in publishing the largest and most representative edition of its kind in Harrisburg. Every line of the advertising carried therein was secured on a strictly cash basis (no trade deals playing any part therein), and exceeded by hundreds of inches the volume carried by the other Harrisburg papers in their show numbers of the same day. Some idea of the careful manner in which the Harrisburg Telegraph's show edition was read, may be had from the above picture of the responses received in the contest conducted by this paper, in which prizes were offered for correctly naming the cars represented by the various dealers whose portraits were published in the Show edition. More than a bushel basketful are shown here, from which the hundred prizewinners selected, are as follows:

For List of Winners of Auto Contest See Page 12

### Auto Show Glimpses

By THE SNOOPER

E. J. Moon, of St. Louis, is a visitor at the Moon exhibit of the Standard Motor Sales Company. Mr. Moon is a son of the designer of this excellent motorcar, which is now being introduced here. For fifty years the Moon buggies have been known from coast to coast, and the same efficient organization was applied to the making of motorcars about seven years ago.

J. E. Rice, the loquacious salesman of the Moon car, wants it distinctly understood that this car is not a ten-cent counter proposition. A typographical error by the "Snooper" quoted the price at \$1.95. It should have read \$1,195. This figure is more in keeping with the excellent appearance of a car having the Moon qualities.

B. R. Johnson, the manager, says he was unable to find any evergreen with clinging-vine tendency sufficient to trail and climb around the big pillars, so he was obliged to buy 10,000 pounds of smilax.

D. Lloyd Smith, sales manager of the Commercial Car Company, reports a prosperous outlook for the motor trucks, and the new deliveries of the Garfords is evidence that the truck has a liberal representation among the motor trucks in use throughout the city and vicinity.

M. K. Thomson has accepted a position as salesman with I. W. Dill, in charge of Hollier Eight and Republic truck distribution. Mr. Thomson has recently been active in the Lancaster territory, but prior to that was associated with Philadelphia motorcar interests.



## Six Reasons Why You Should Buy Republic Trucks

1. Republic Trucks represent the highest priced specifications in parts, and the lowest price list as compared with competitors.
2. The cost of the truck is represented in its component parts, rather than in overhead expenses and abnormal advertising.
3. Trade demands have compelled the increase of the capital stock of the Republic Co., twice within one year. The manufacturing facilities and buildings have been trebled while the quantity of business has grown 800 per cent.
4. Repeat orders have been received continuously from four of the larger oil companies, large manufacturing companies, and the United States Government.
5. The men building Republic Trucks have been pioneers in the industry, and have devoted their entire attention and energy to the manufacture of trucks only.
6. The low upkeep cost as shown by Republic parts price list.

DISTRIBUTED BY

## Pen-Mar Auto Co.

I. W. DILL

M. F. THOMPSON

East End Mulberry Street Bridge

## The New Home of the Auto Transportation School

25-27-29 NORTH CAMERON STREET



The second floor is used for the instruction of students in the operation of motor cars. Actual experience under the direction of expert automobile mechanics while they assemble and repair motor cars. This gives students a practical knowledge of motor car mechanism. Complete course \$50, payable on easy terms.

Car storage on first floor. Cars delivered to all parts of city, FREE. Fireproof, steam heated, expert repairing, charges reasonable. Magnets, Self Starters and Carburetors Adjusted Free.

# CASE

"The Car With the Famous Engine"

The motor that makes extra cylinders unnecessary. Good looking streamline body, complete equipment. Convenience and ease in driving.

Wheelbase 120 inches. Motor—4-cyl.—bore 3 3/4 in. Stroke, 6-in., 40-45 h. p. Westinghouse Ignition. Starting and Lighting. To-morrow's Car To-day—Four-ty. . . . \$1090

Cantilever springs in rear. Wheels, 34x1-inch. Body, all-steel; divided front seats, adjustable. 7-passenger touring model, only.

## Conover & Mehring

1713-1717 N. Fourth Street  
Sole Distributors For Central Pennsylvania.



GET AN  
"Exide" STARTING BATTERY  
and assure yourself of a right start  
at the right time

We are storage battery specialists. We will recharge, repair, renew or replace your battery, do the work right and do it promptly.

Come to Us For the Right Kind of Battery Service  
**EXCELSIOR AUTO COMPANY**

H. L. Myers, Mgr.  
Bell Phone 80

11th and Mulberry Sts. Harrisburg, Pa.

## Order Your Chalmers Now--Save \$100

The car of spunk—response and lively action; Chalmers, the car of speed—but more than mere speed will raise its price from \$1350, after March 1st to \$1450.

The sharp rise in the price of aluminum, copper, high-speed steel, vanadium steel and leather makes this increase imperative.



Six-40 Chalmers  
Now \$1350  
After March 1st  
\$1450

**Keystone Motor Car Co.**  
1019-1025 Market St.



## "Cadillac Eight"

It is now universally conceded that the motor in the really up-to-date high-grade car must be the V-type, multiple cylinder continuous torque design.

Compare any price car you please with the Cadillac proven service; quality incident to quantity production; neatness in arrangement of accessories; hidden door hinges and handles; disappearing tonneau seats; dropping steering wheel.

We repeat, compare—we let the rest to you.

**Crispen Motor Car Co.**  
413-17 S. Cameron Street  
Harrisburg, Pa.