

The Jeffery

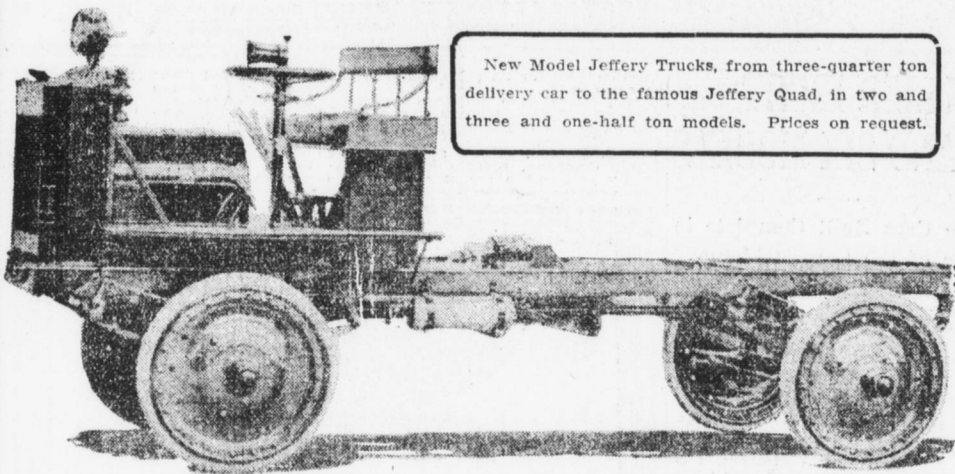
Fours
and
Sixes



People who formerly paid \$2,000 to \$5,000 for an automobile now find the very qualities they have always insisted upon—in the Jeffery Four, at

\$1,000

"America's Standard Automobile at a \$1,000 Price"



New Model Jeffery Trucks, from three-quarter ton delivery car to the famous Jeffery Quad, in two and three and one-half ton models. Prices on request.

Why the Big Four Combination?



I have been in the automobile business for two years. During this time I have handled various makes of automobiles.

I now feel fully justified in calling attention to the "Big Four Combination." Our lines offer a very wide range for all purposes.

In speaking of the Jeffery cars, which I introduced into Harrisburg, notwithstanding the fact that they were higher priced until this season, I was successful in placing a handsome number of cars.

All of these machines have been retained by their original purchasers because they continued to be satisfactory.

This is an enviable record. It shows the absolute confidence Jeffery owners have in the Jeffery.

The other three lines have been added since. They were chosen with the same care as the Jeffery. Each has proved a winner.

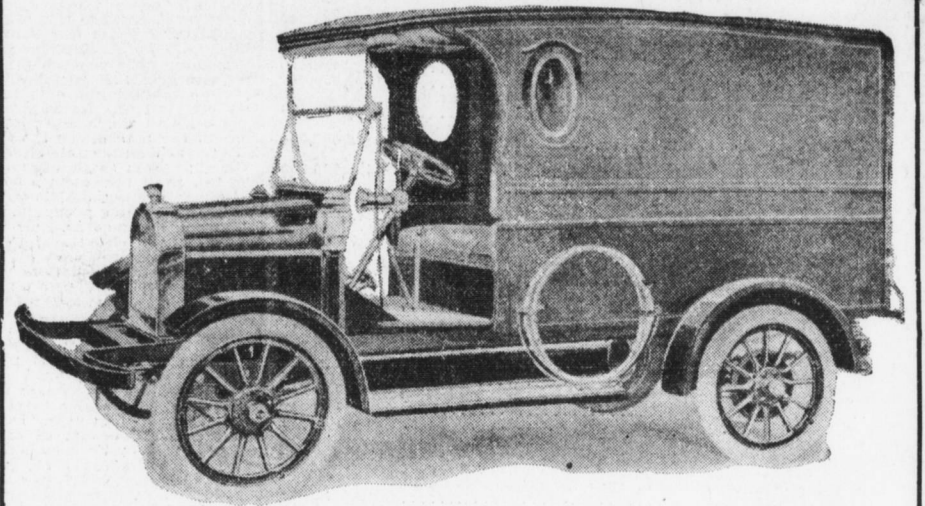
My experience in mechanics before and after entering the automobile business puts me in a position second to none in meeting the requirements of delivery car and truck buyers.

I am an absolute believer in giving service to my patrons. I maintain at all times an up-to-date service station with competent men and with each new car I give a fifty-hours' service card gratis.

J. A. Bentz

VIM

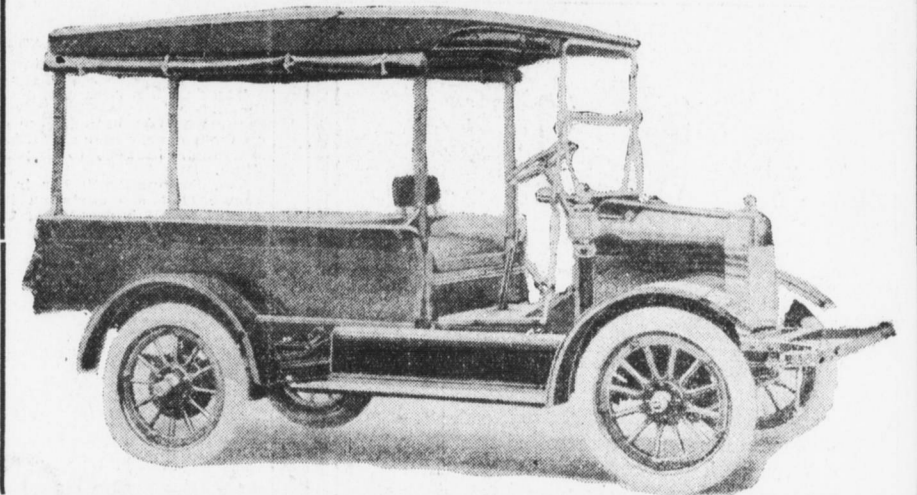
Light Delivery



The leader of the 1,000-lb. delivery cars, made in Philadelphia by the Vim Motor Truck Co. and sold in 328 cities throughout the United States.

Prices Range From

\$635 to \$725



Standard

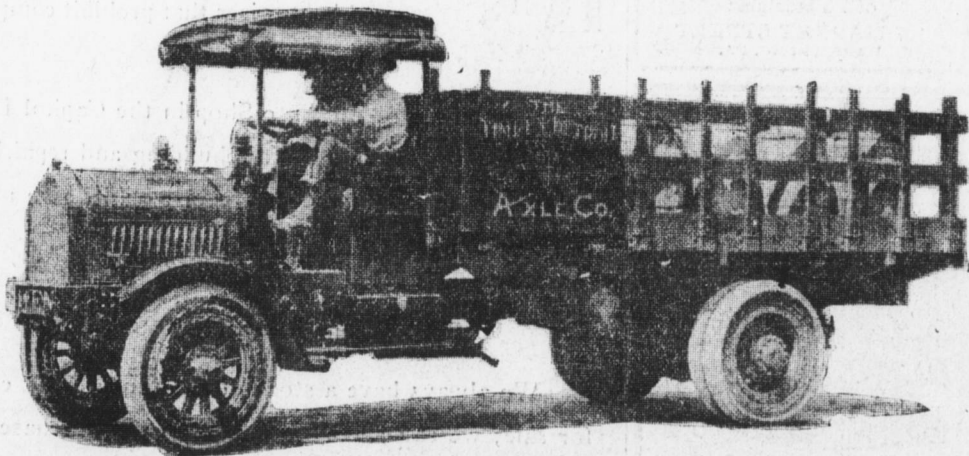


A heavy truck designed and built for the man who wants a serviceable truck at a reasonable figure.

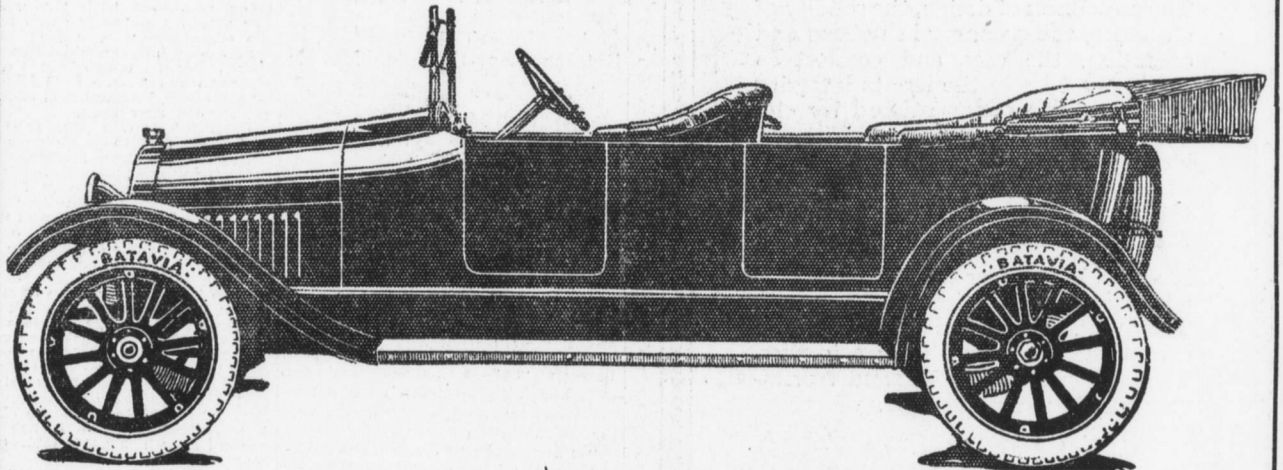
SPECIFICATIONS:

Continental Motor, Fedders Radiator, Covert Transmission, Spicer Joints, David Brown Differential, Timken Axles, front and rear; Gemmer Steering Gear; in fact, all equipment is the best of its kind to be had.

PRICES		
2-ton Chassis	\$2000	Worm and Chain Drive
3 1/2-ton Chassis	\$2875	
4-ton Chassis	\$3075	
5-ton Chassis	\$3600	



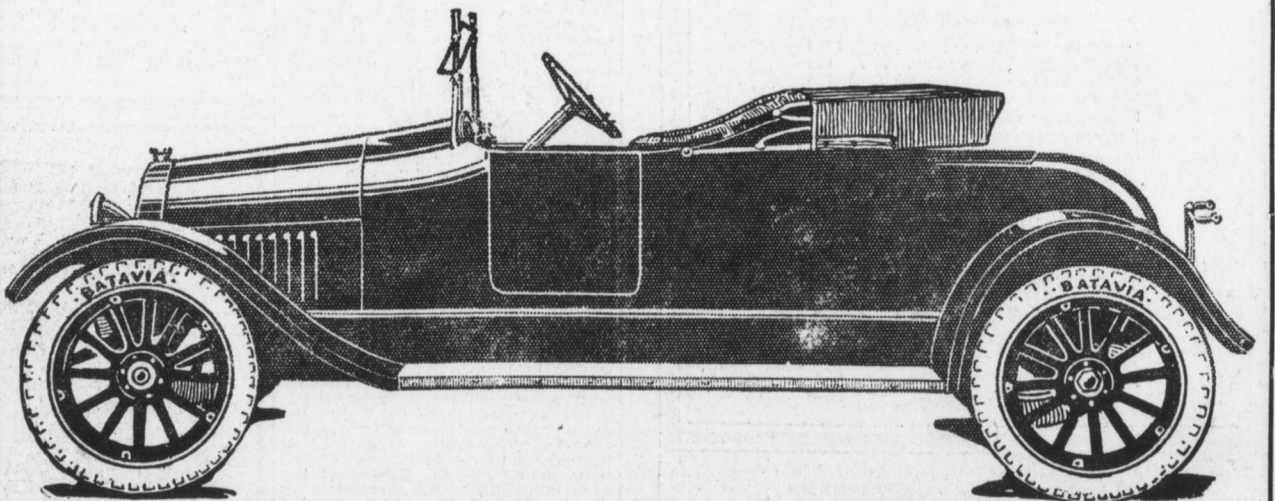
PULLMAN



Our most popular home car; synonymous of luxury, comfort and sturdiness. Specifications:—Motor, 4-cylinder, bore 2 3/4-inch stroke, 4 1/4-inch, 32 horsepower, Stromberg carburetor, "Dixie" high-tension magneto; transmission, selective type; axles, front, solid drop forged I-beam; rear, full floating; demountable wheels, 114-inch wheelbase, independent electric system, clear and rain-vision windshield; gasoline tank, 9 1/4 gallons carried in cowl, one-man type.

Prices

Five-Passenger, four-cylinder, 32 H. P.	\$740
Three-Passenger Clover Leaf Roadster	\$740
Two-Passenger Roadster	\$740
Three-Passenger DeLuxe Coupe	\$990
Sedan Top for touring car (extra)	\$100



BENTZ-LANDIS Auto Co., HARRISBURG PA.