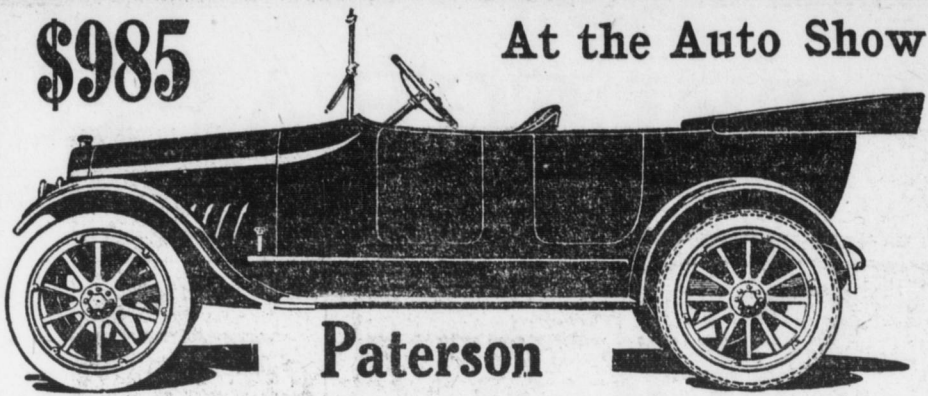


\$985

At the Auto Show



Paterson

HERE'S a big, roomy, high-grade Six—sold extensively for seven years, and manufactured by a company that has built quality carriages for 46 years. This new Light Six is their masterpiece—and they're justly proud of it—because it embodies the very best of the latest engineering ideas in practice. That's why we consider the Paterson "6-42" the greatest motor value at \$985. Six-cylinder Paterson, new Continental Motor, 3 1/4 x 4 1/2-inch unit power plant, full floating rear axle, 117-inch wheel base, and many other superior mechanical features.

Crow Elk-hart "30" "Made to Make Good"

None but the best materials are considered good for use in the Crow Elk-hart car. Bower and Hyatt bearings, Thermo-Syphon cooling system, Disco-motor generator system. Demountable rims, 112-in. wheelbase, gravity gasoline feed.

MONN BROTHERS

1637 Swatara Street

Additional Auto News and Show Advertising On Pages 12 and 13 Regular Section

EVERYTHING IN PLACE FOR AUTO OPENING

(Continued From First Page, Regular Section.)

plement Company, Tenth and Market streets, house the exhibition. The entire second floor has been peery tastefully decorated; green and white being the color scheme. Hundreds of yards of green and white bunting have been utilized in bringing out the desired effect. Ten thousand if necessary Southern Smilax has been used in decorating the immense hall. Thousands of electric bulbs have been strung in huge garlands and clusters or half hidden away behind miniature forests of smilax and ferns adding a distinctive touch to the whole effect. And they say that Sarah Lerner's orchestra will entertain the crowds with renditions that are both popular and classic.

Harrisburg has had automobile shows for many years, but not like this one. This one will far outclass any previous effort in number of cars, number of exhibitors, and in the amount of floor space covered. Prosperity is evident on every hand, and whether you income is \$10,000 a month or \$100 a month, one can find good serviceable cars there for the \$100 man as well as the more luxurious ones for the man who may be fortunate enough to be pulling down the \$10,000. To-day people will not leave a thousand or two lay around to corrode in an old sock. No, sir. They see their neighbors riding in a motor car, and feeling they can afford one as well, they put the money into service and get motor car service in exchange. This touring from city to city admiring the beauties of nature, and appointed in the luxury of a car, frequently, gives one a broader conception of life. Many people who own several modest houses that brings in a questionable profit, prefer to dispose of them and invest the money to raise ready cash, in order to get some pleasure out of life while able, rather than keep the thousand buried through life because it is "safe," even though it does not yield any material return on the investment. It is interesting to note the number of people there are who in past years were so thrifty they would scarcely think of investing in the luxury of a cigar unless it was a gala occasion when they had their Sunday-go-best togs on and they took a leisurely stroll down the avenue to see and be seen. Yet those thrifty old coppers, bewhiskered, or otherwise, who were frequently accused of being penurious, may to-day be seen at the wheel of a high-powered speedster going down the pike at a reckless pace, regardless of the part that one elug from the exhaust is making more smoke than they would burn up in a month on cigars, before. This shows the fascinating power it has over men all who once experience the pleasure of holding the wheel when going at a swift clip over the open road or cautiously guiding the car at a snail's pace through a crowded thoroughfare.

Most every man who makes \$1,200 a year can afford a motor car, and they say there are 5,000,000 in the United States who earn that salary. With approximately 1,200,000 motor cars to be built this year, you can realize why deliveries are not made as promptly as when you send to the corner grocery for a package of shavings from the kernel of wheat. And when dealers tell you that there may be a shortage, or that you may be disappointed in delay of deliveries, don't think he is just bluffing to get your order. Many who practice procrastination find it necessary to console themselves with some other make because they failed to make up their mind before the touring season was on, and a deluge of orders had swamped the factories to such an extent that they are obliged to pro rata the shipments by districts in order to pacify the clamoring dealers to some extent. The dealers in turn are besieged by would-be buyers anxious to tender the long green in payment without the necessity of being solicited for an order. And then there are the trucks. Several years ago the average man was content to jog along the road at a rate of about four or five miles an hour with an ordinary load. But to-day

Oldsmobile

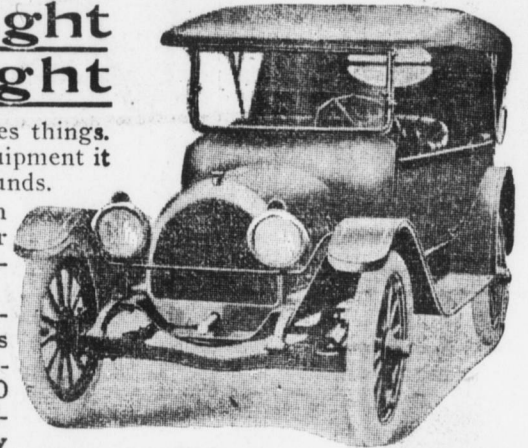
Two Leaders at the Auto Show See Them

Here is an Eight That is Light

This is the kind of car that does things. With full touring supplies and equipment it tips the scales at less than 2,700 pounds.

We believe we are justified in calling it the lightest eight-cylinder car, for its horsepower, ever designed.

The motor is of V-type construction, L-head, with eight cylinders cast in two blocks of four cylinders each and set at an angle of 90 degrees. The bore and stroke dimensions of the motor are 2 7/8 by 4 3/4 inches.

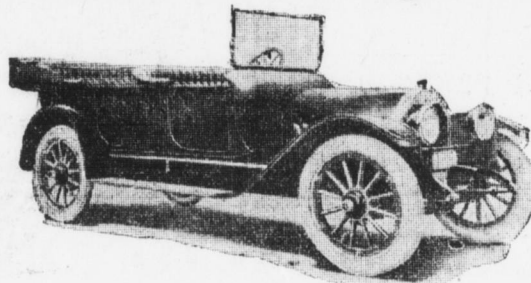


Olds 8-cyl. \$1195 f. o. b. Lansing, Mich.

The piston displacement is considerably greater than the average manufacturer would consider necessary in a machine weighing less than 2,700 pounds.

The motor develops over 40 actual horsepower at 1,800 revolutions per minute.

Model 43—the Light Valve-in-Head Four



Olds 4-Cyl. \$1095 f. o. b. Lansing, Mich.

This is the Four-Cylinder Car which quadrupled the output of the Olds Motor Works for 1916. It brings together in a superb manner

- a new lightness
—an overflow of power
—an almost total silence
—a very strong chassis
—extreme commodiousness
—a rich luster
—a new beauty
—advanced style

Oldsmobile efficiency standards call for weighing considerably less than 3,000 pounds. Model 43 registers a weight of 2,755 pounds, ready for the road with a full supply of fuel and a spare casing. It is the first fine vehicle to achieve such lightness—a lightness which means low tire cost, low fuel cost, less wear on the motor and faster acceleration.

East End Auto Co., Linden and Shrub Sts. F. S. GANS, Manager

Bell Phone 315-R

MYERS TIRE MAN BUILT BIG STORE

George W. Myers who has the local distribution for United States and built a remarkably successful business within seven years. In those days vulcanizing was almost unknown and

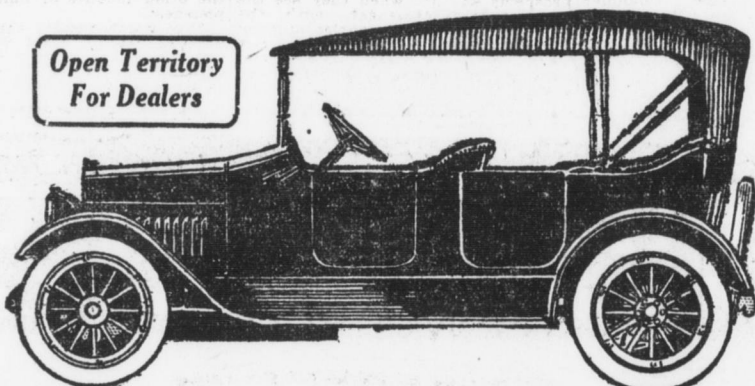
the tire business had not reached its present state of perfection. As a pioneer in the business he worked out his own system of tire repairing and to-day has a three-story modern building, two floors of which are devoted to the tire business. This building is said to contain the largest private stock of automobile tires in Pennsylvania. Adjustments are made here the same as in a factory branch. Mr. Myers reports having doubled the volume of business in six years. A recent photograph shown in his announcement elsewhere in this is-

issue gives a partial view of the immense stock of tires essential to meet the local demand of one distributor.

ANNOUNCE BIRTH OF DAUGHTER

Special to the Telegraph Dauphin, Pa., Feb. 19. — Mr. and Mrs. Grover C. Glass of Paxtang, announce the birth of a daughter, Jane Bowman, Saturday, February 15. Mrs. Glass was formerly Miss Margaret Maurey of this place.

In the "Bell" you have Efficiency, Luxury, Power and Mechanical Excellence all combined in a way that insures quality, comfort and endurance seldom found in cars built to sell at much higher prices.



Open Territory For Dealers

The Bell models include Roadster and Touring Cars, with or without detachable Sedan top. Also light Delivery Car, with three styles of bodies.

Principal "Bell" Features

- Full floating rear axle. Helical bevel differential gear. Three-point suspension motor. Self-starter (enclosed chain adjustment). Control levers above steering wheel. Genuine leather upholstery. One-man top. Gasoline tank in cowl. Atwater-Kent ignition. Three-quarter elliptic springs.

MODEL 16 \$775 f. o. b. York, Pa.

Moist & Moist

60 South Cameron Street Distributors For Central Penna.

- LIST OF EXHIBITORS UNIVERSAL MOTOR CAR CO. Sixth and Kellor Streets. BENZ-LANDIS AUTO CO. 1808 Logan Street. KEYSTONE MOTOR CAR CO. 1019 Market Street. MILLER AUTO CO. Front and Market Streets. OVERLAND-HARRISBURG CO. 212 N. Second Street. CONOVER & MEHRING 1713 N. Fourth Street. PENNA. AUTO SALES CO. 5 Grace Avenue. E. W. SHANK 120 Market Street. ENSMINGER MOTOR CO. Green and Cumberland Streets. CRISPEN MOTOR CAR CO. 413 S. Cameron Street. GEORGE B. ZECH City Auto Garage. P. H. KEBBOCH 15 South Third Street. MONN BROS. 1637 Swatara Street. HARRISBURG AUTO CO. Hamilton and Susquehanna Sts. COMMERCIAL CAR CO. 1334 Howard Street. AUTO SALES & DISTRIBUTING COMPANY 125 S. Cameron Street. I. W. DILL 1181 Mulberry Street. HUDSON SALES CO. 1131 Mulberry Street. ANDREW REDMOND Third and Boyd Streets. RIVERSIDE AUTO CO. 1117 N. Front Street. PAUL MESSNER 1116 James Street. EAST END AUTO CO. 13th and Walnut Sts. KING CAR SALES CO. 80 S. Cameron Street. FORD SALES CO. 147 S. Cameron Street. PACKARD MOTOR CAR CO. 107 Market Street. THE PENBROOK MOTOR CAR COMPANY W. H. SCHUE 2412 North Sixth Street. THE STANDARD MOTOR CAR COMPANY 1163 North Third Street. MERCER MOTOR CAR CO. Philadelphia. F. B. SNYDER York, Pa. BALTIMORE BUGGY TOP CO. Baltimore, Md. STERLING AUTO TIRE CO. 1451 Zarker Street. FRONT-MARKET MOTOR SUPPLY CO. Front and Market Streets. J. D. DUNCAN JR. CO. 10 N. River Street. EXCELSIOR AUTO CO. 11th and Mulberry Sts. THE ATLANTIC REFINING CO. Seventh and Woodbine Sts. HARRY P. MOTER 1925 Derry Street. WM. S. ESSICK Union Trust Building. KEYSTONE LUBRICATING CO. Philadelphia. BETTERN-AIR TIRE CUSHIONS Philadelphia. WM. C. ROBINSON & SON CO. Baltimore, Md. EMERSON-BRANTINGHAM IMPLEMENT CO. Tenth and Market Streets. THE GLOBE REFINING CO. Cleveland, Ohio.



Automobile Insurance? Sure Workmen's Compensation Insurance? Yea Verily

- LIABILITY THEFT TORNADO WATER DAMAGE All of this in One Policy BE WISE, AETNAIZE! PROPERTY DAMAGE EXPLOSION COLLISION LIGHTNING PERSONAL INJURY (Owner) IDENTIFICATION CARD FIRE LOSS OF USE Only the Aetna Does It

It not only saves you from loss but avoids the complications that arise when several adjusters are necessary for different lines in as many policies.

Remember Too

Automobile Insurance is not the only thing we write. LOOK HERE:

- LIFE BURGLARY—RESIDENCE PLATE GLASS ELEVATOR LIABILITY DENTISTS' LIABILITY FLYWHEEL LIABILITY BONDS—FIDELITY BONDS—SURETY ACCIDENT BURGLARY—BANK PUBLIC LIABILITY ELEVATOR PROPERTY DAMAGE TEAMS' PROPERTY DAMAGE SPRINKLER LEAKAGE RESIDENCE LOSS OF USE LIVE STOCK HEALTH BURGLARY—MERCANTILE BAGGAGE (enroute) PHYSICIANS' LIABILITY RESIDENCE WATER DAMAGE TEAMS' LIABILITY EMPLOYERS' LIABILITY BOILER

If your policy is stamped at this office you are insured. Order of any broker, BUT require Aetna contracts.

General Agent and Adjuster Wm. S. ESSICK Union Trust Building