

Bowman's

Founded 1871  
Bell-1991-United

Bowman's

# February Furniture Sale

## "Substantial:" The Guiding Principle That Makes the Bowman Semi-Annual Furniture Expositions a Vital Factor in Home-Making

COMMENCING to-morrow, Our Substantial February Furniture Sale enters upon a full month of new progress.

A Furniture Sale that is DIFFERENT!

Different in its assemblage—different in its methods of bringing about genuine savings—and in all that is implied by the term, different!

This Substantial Furniture Sale is growing more important each year, and becoming more closely associated with the making of homes; because it has been founded upon substantial methods.

Very unlike the screaming bargain sales of cheap furniture so prevalent in February.

Cheaply made furniture; solely to sell at a "price"; may look well and sound well; but cheaply made furniture is cheap furniture. That is why!

It's to be compared with the fable about a foolish old hen who looked upon egg-laying as a secondly consideration to that of a beautiful plumage and imperial "strut."

Service in furniture must necessarily come first. Permanent service is the absolute!

Furniture built for service is made by skilled hands who are masters in the knowledge of construction; that thorough comfort may be enjoyed.

Thoughtful folk who realize that the above must be logical, are coming in greater numbers to the Bowman semi-annual sales of furniture from every portion of Central Pennsylvania.

### Only the Most Worthy Furniture Can Uphold the Reputation of This Event

Expositions of national importance are represented in this large and larger assemblage.

And it may be interesting for the purchaser to know that furniture here comes from the most reliable sources.

Several months previous, visits were made to Jamestown, Grand Rapids, New York and Chicago—world famed for the prime of furniture creation and originality of design.

And to secure the very best workmanship, months were allowed in the making.

Here again there's a marked difference from the hurry-make-it-any-old-way-furniture.

### In Variety It Is Second To None In Harrisburg

An example of this will be found in quaint Period lines.

Among the first on the floor are William and Mary, Queen Ann, Colonial, Louis XVI, Jacobean and a number of others.

New interest will be taken in finishes, popular among which are Adam, Butler, Sheraton, Satin Gum, Ivory, Indian Gray, Pakana Brown, Fumed and several of the more familiar ones.

Deserving special mention is the showing of medium priced furniture; substantially made, and worthy in all.

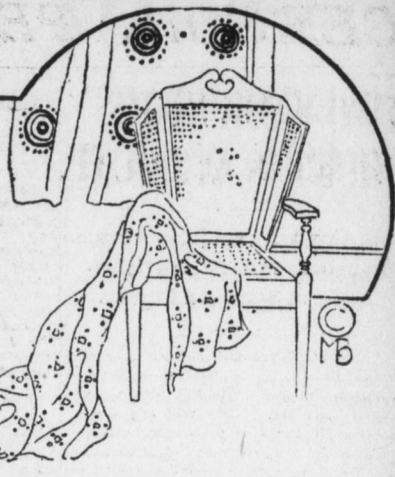
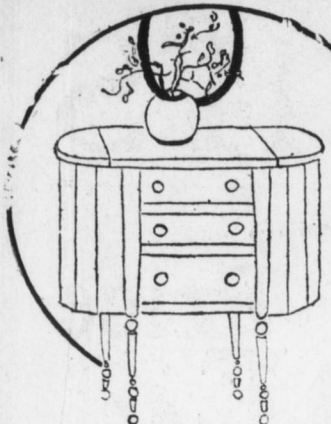
### Promising Values Of An Uncommon Nature

Your savings in this sale comes as a result of tremendous purchases from makers with whom we are in constant buying activity. Because of these purchases, a willing concession in price was granted.

### About Terms And Delivery

With those who desire time payments, convenient terms may be arranged in our usual credit service.

Deliveries are made anywhere without charge; regardless of the amount purchased.



### William & Mary Dining Suite

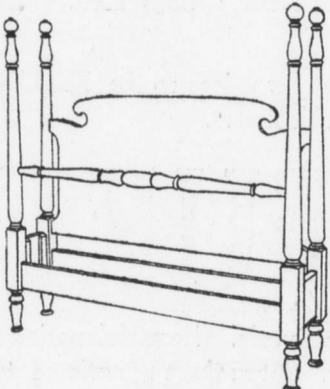
4 pieces; as illustrated.

Quartered oak, in a rich brown Jacobean finish. Dustproof partitions in buffet and serving table. Eight legs on buffet and china closet. Price \$132

### Colonial Poster Bed

Dull rubbed mahogany

Made of mahogany, and comes in full sizes, as well as "twins." Foot end finished with a quaint turned cross rail.



February Sale Price \$14.75



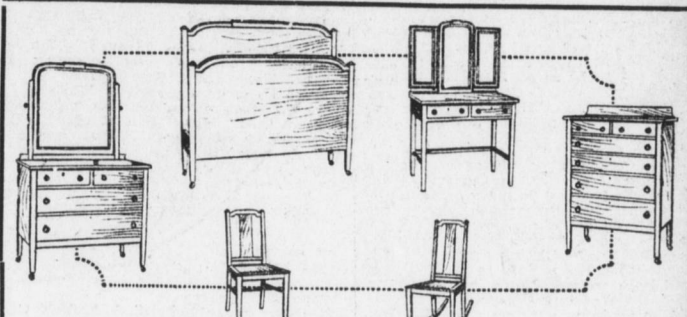
### Colonial Windsor Rocker

Solid mahogany Windsor rocker; turned rods in the back resembling bamboo, shaped seat. Matched arm chairs.

February Specialty, \$6.75

### Overstuffed Fireside Rocker

Deep seat and spring back; very comfortable. Upholstered in brown Spanish leatherette. February Sale Price \$9.75



### Straight Line Period Bedroom Suite

6 pieces; finished in new Indian gray.

Lines of unusual character. Interior of drawers made of solid mahogany; dustproof throughout. Backs of mirrors fastened with brass screws and washers. February Price, \$99. Pieces may be bought separately.

### Satin Gum Dresser

Straight line design.



42-inch base; dust-proof bottom; 24x30-inch mirror. This beautiful finish may also be had in

Triplicate mirror dressing table, Gentleman's chiffonier, Full size bed.

Choice of any piece, \$17.75.

### A First-Day Mattress Offering

On the first day only, of this February Sale, we will offer fifty felt combination mattresses; covered with art ticking; two parts; at the very low price of \$3.95

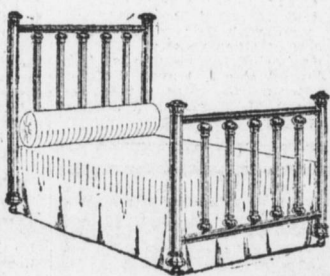
### Fifty Brass and White Enamel Beds At New Low Prices

Brass beds have advanced considerably in price; but we were fortunate in securing a limited number of styles which a maker decided to discontinue, and sold them at the former low prices. Enamel beds were included.

2-inch Continuous Post Brass Beds, with one-inch filling rods; in bright or satin finish. February sale price, \$12.95.

Massive Brass Bed, with 2 1/2-inch posts and 1 1/2-inch filling rods; in bright and satin finish, or all bright finish; full size. February sale price, \$18.50.

2-inch Post White Enamel Beds; durable filling rods. February sale price, \$3.95.



### Large Public Meeting of Woman's Benefit Club

The first public meeting this year of the Woman's Benefit Association of the Maccabees, or the Ladies of the Maccabees of the World, was held in Harrisburg Review Hall, corner James and Verbeke streets. This session was

of special interest, as moving pictures were given showing the development of the work during its twenty-three years of existence and the laying of the cornerstone of the new home office in Port Huron, Mich., a building valued at \$200,000 and the first of the kind to be erected by women.

Among the pictures given were those including the part taken by the Grand Lodge, Free and Accepted Masons, of

Michigan, which had charge of the ceremonies.

One of the best pictures shown was that of Most Worshipful Grand Master George L. Lusk as he was delivering his address and as he presented the silver trowel to Miss West, supreme commander. Another important picture was the beautiful military display drill as given by the Philadel-

phia guard at Lu Lu Temple last Wednesday evening during the annual installation of the officers of Philadelphia Reviews of the Maccabees.

This meeting was of more than usual interest, as the large crowd there assembled was addressed by Mrs. Elizabeth Brown, past supreme commander, of Bradford, Pa., and Miss

Nelle E. Lounsbury, great commander of Pennsylvania, Warren, Pa.

The Harrisburg guard, directed by Captain Sprucebank, gave a novel drill, followed by a musical and literary program. Mrs. May H. Hickok, district deputy, of 256 Cumberland street, this city, presided at the meeting and at the close secured several applications for membership.

## The Telegraph Bindery

Will Rebind Your Bible Satisfactorily

### Bringing Up Father

By McManus

