

DODGE BROTHERS WINTER CAR

Protection from the weather with real comfort and convenience has been the prime consideration.

Of standard limousine height, it affords ample head room.

Entrance and exit is facilitated by doors which open easily and wide.

Perfect ventilation is at the passengers' command by a simple adjustment of the door glasses, with clear vision on all sides.

Designed to continue the graceful lines of the car, each body is fitted individually at the factory.

In the Spring it may be quickly changed to an open touring car or roadster.

The motor is 30-35 horsepower

The price of the Winter Touring Car or Roadster, complete, including regular mohair top, is \$950 (f. o. b. Detroit)

Canadian price \$1335 (add freight from Detroit)

DODGE BROTHERS, DETROIT

Keystone Motor Car Co.,

1017-25 Market Street

Bell phone 1859 United 971-Y

C. H. BARNER, Mgr.

Pullman

\$740

DELIVERED



1916 MODEL

Stand the Pullman five-passenger at the curb beside any car in its class or out of it and it retains its own air of snap and distinction. It is heavy enough to hug the road at any speed—light enough to save tires and gas. The roomy luxury of the Pullman sets a new standard for cars at anything like the price.

Two, Three and Five-Passenger Models

SPECIFICATIONS: 114-inch wheel base, 32 H. P. four-cylinder motor, 3 1/2 by 4 1/2 non-skid tires all four wheels, cantilever rear springs, independent electric starting and lighting system, separate high tension magneto, Mayo radiator, one-man top, full floating rear axle, extra large body to accommodate seven passengers if desired.

ANDREW REDMOND, THIRD AND BOYD STS. BENTZ-LANDIS AUTO CO., DISTRIBUTORS

See 1916 PAIGE 6-46 \$1295

A central location has been arranged where we will display the new 1916 model to the best advantage, and where literature or other information may be had on request. This beautiful model commands the admiration of all who pass the window of Bretz Bros. Hardware Store.

109 Market Street

RIVERSIDE AUTO CO. Bell Phone 3731-R.

GEORGE R. BENTLEY, Dealer.

Terrific Test That Motor Car Can Be Subject To

A most unique test of the endurance and stability of Overland construction occurred recently along the Florida coast, when a Model 83 Overland touring car, after being buffeted about all night in a raging surf, was found to be only slightly damaged when rescued the following morning.

The owner of the car, together with a party of four people, were driving along the beach at low tide when he ventured too close to the water's edge. The first inkling he had of impending danger was when the car slowed up suddenly and began to settle in the rear. Then he realized that he had driven into a pocket of quick sand and the party barely had time to jump for safety before the water surrounded the car.

The incoming tide and the danger connected with the work, made it impossible for a rescue party to render much assistance. By the time it grew dark, the surf was breaking over the top of the Overland.

At the full height of the tide, the car was in ten-feet of water with the waves pounding and beating it from one side to the other. The breakers would smash into it and stand it on end, leaving it sometimes on two wheels, sometimes on its side and at other times completely upside down, with the body and radiator into the sand.

The following morning at low tide a wrecking crew managed to haul the car up on the beach. After the sand and seaweed was cleaned out of it, the owner began an investigation as to the extent of the damage. He was amazed to find that with the exception of a broken top, smashed windshield and loss of paint, the car was as good as ever.

The terrific pounding it had been subjected to during the night had not even bent the fenders. The radiator was not damaged and with the exception of sand scratches the body was in excellent shape. In fact if the magneto had not been soaked, he could have driven the car home under its own power.

Spectators declare that the manner in which the Overland withstood the buffeting of the high seas, left no doubt to the ruggedness of its construction.

Hugh Chalmers' Anniversary Celebrated in Fit Style

During the Chalmers Sales Convention just closed in Detroit, Hugh Chalmers celebrated the eighth anniversary of his entry into the automobile business. On November 16, 1907, he reached Detroit, having just purchased an interest in the Thomas-Detroit Motor Company. At that time the Thomas-Detroit Company was capitalized at \$150,000 and employed a force of 200 men.

One year later, the company became the Chalmers Motor Company. To-day Mr. Chalmers is at the head and in financial control of one of the world's largest automobile factories, employing 5,000 men and with a real estate and machinery value of \$8,000,000.

Detroit was given a striking idea of the extent to which this business has grown in the past eight years by the gathering of 600 Chalmers dealers in convention and the placing of orders for over \$22,000,000 worth of cars in less than 40 minutes' time.

The salaried position which Mr. Chalmers left in Dayton, O., was worth \$75,000 and many wondered at a man giving up such a position to encounter the uncertainties of starting a new business. Those people must still wonder to-day at his genius as well as his courage.

Cadillac Eight First Car Over Mountain Road

Until a Cadillac Eight recently made the trip from Ferndale to Lily mine, Humboldt county, California, boasted a road that no motorcar had ever traversed. Consequently, the whole country for a week has been discussing the feat of the Cadillac in surmounting heights hitherto impossible for an automobile.

Not only are the grades between the two points exceptionally heavy, but the road rises steadily throughout the entire distance. The gradient on some portions of the road varied from 37 to 41 per cent. These and the steady upward pull had always proved the defeat of ambitious motor car owners, and F. W. Wetmore was told that he could not make the climb with his Cadillac Eight. But Mr. Wetmore was not deterred. He drove the car and called five other men, the combined weight of the passenger load being 1262 pounds. One of the men in the car had been over the road in a wagon a few days before the motor trip, and he launched at the mere idea of an automobile going the entire distance. This the Cadillac did, however, without a single stop—much to the gratification of all in the car.

FRANKLIN

Ensminger Motor Co.

Third & Cumberland Sts. DISTRIBUTORS



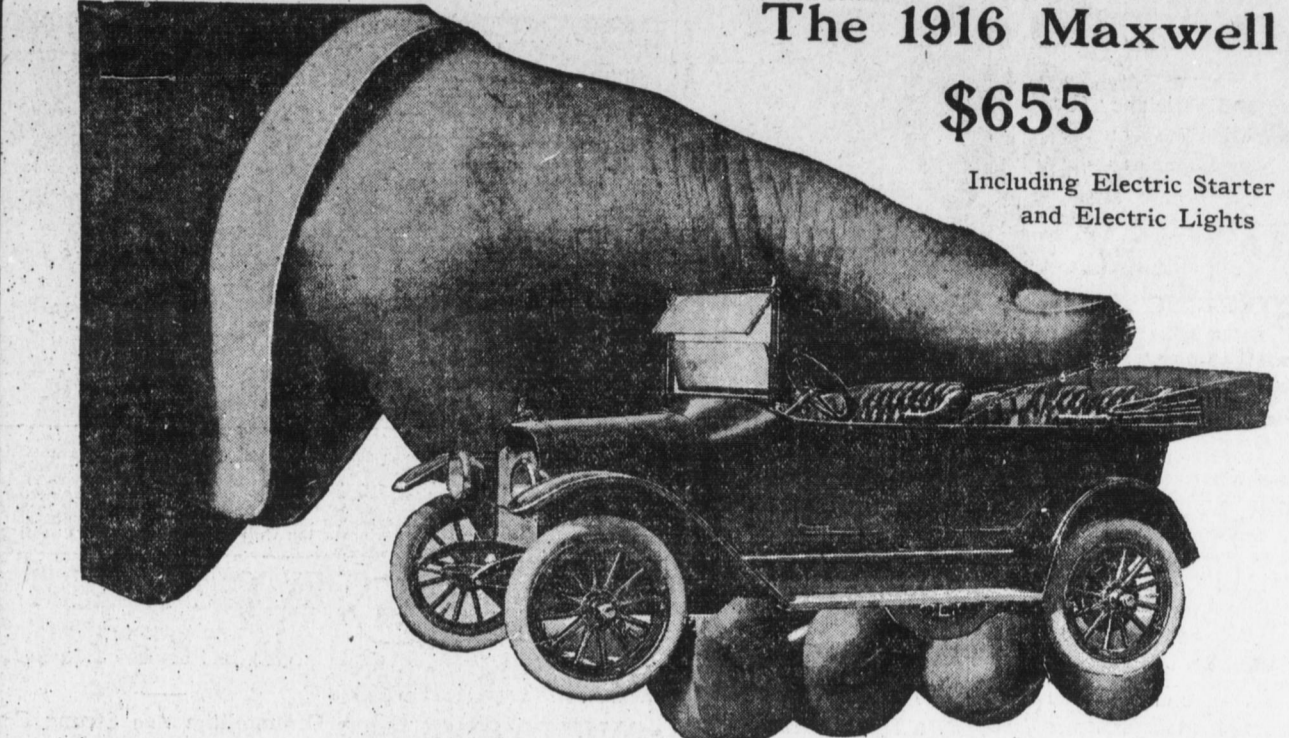
ENSMINGER MOTOR CO.

THIRD AND CUMBERLAND STS. Distributors.

Prospective Automobile Purchasers Take Notice!

Two Attractive Offers
1914 CADILLAC TOURING CAR—Condition excellent; immediate delivery.

1914 CHALMERS TOURING CAR—Very good condition.
A. H. SHADER
107 Market St., Harrisburg, Pa.



The 1916 Maxwell \$655

Including Electric Starter and Electric Lights

I Want You to Take This Car Now

Ride in it—take the family out every Sunday—really enjoy the many fine days right now for auto riding. And I have arranged that you may buy this 1916 Maxwell—the biggest auto value on the market—by

A Small Down Payment—Balance Easy

The 1916 Maxwell is complete in every detail—electric starter and lights—demountable rims—one-man top—graceful lines—full five-passenger body—everything that the high-priced car has—and you can buy it and Pay as You Ride.

E. W. SHANK

Bell 366

Cumberland 195-X

Distributor

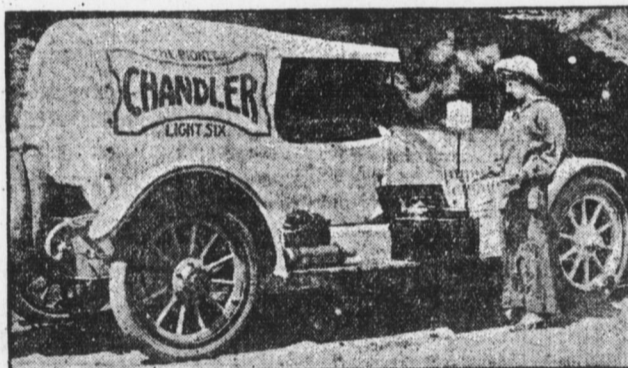
Open Evenings and Sundays

120 Market Street

Talk It Over With "Shank"

Associate Dealers—B. S. Weigle, New Cumberland; Lykens Motor Car Co., Lykens; S. P. Diller, Holling Springs; Wm. M. Baschore, Shippingsburg.

TRAVELS BY AUTO PRAIRIE SCHOONER



Traveling with all the comfort and convenience that can be found in the hotels along the highways and enjoying the thought that this service was theirs to command at any hour of the day or night, A. C. Sharkey, of Los Angeles, and Mrs. Sharkey, have just completed a month's tour from Los Angeles up the coast route to San Francisco and the Sierras, and return. Enroute they camped several days in the Santa Cruz mountains, and visited the California Redwood Park.

Having the opportunity of securing a Chandler "Six" that had been burned to the bare steel of the chassis, Mr. Sharkey bought the car and fitted it out according to what his ideas of an all-around touring and camping car should be.

"My car," he says, "is so arranged that to make up my bed all I have to do is to release a screw and turn down the mattress from the rear. The bed is a full-sized and comfortable one, too. I have an extension cord to furnish light to read by and side curtains to make the sleeping quarters cozy."

"My stove is a small gasoline range, which sets in the tool box, on the running board of the car. The commissary is located in the rear of the car, in the center of the spare tire case, out of the way and easy of access."

The photograph reproduced will make many a man wish for a prairie schooner like Sharkey's.

Packard Has a Large Force on Payroll

The Packard Motor Car Company now employs 10,179 people at its Detroit plant. More than 500 of this number have been added since November 1, and the great mass of workers that surge from the forty factory buildings every afternoon at 5 o'clock, would make up an army of formidable size.

The Packard employment department is still working at top speed, hiring men to supply the demands for workers in nearly every division of the factory.

Inclosing material, which has been delayed by the war and various other reasons, is arriving in trainloads daily. Traffic Manager Charles Shaar says that 477 carloads of material and

3,273,560 pounds, in less than carload lots, were received during October.

A vigorous effort is being made to prevent any further postponement of deliveries of Twin Sixes. The delay in materials has been responsible for the lateness in supplying the new cars to customers—many of whom are anxiously waiting.

The Packard payroll for October was \$773,879. For November, the figure will be considerably more than \$800,000. On the basis used by the United States Government, the average wage-earner in America directly supports 2.5 persons. As less than 300 of the Packard employees are women, and as at least half of the men are heads of families, this ratio is too low. Authorities say that three to one is a very conservative figure for Packard employees, and on that basis the Packard institution supports a community of 30,537, not including grocers and meat dealers, clothing merchants, physicians, druggists and the hundreds of others who supply the wants of a community of this size, and who would be a part of it.

The company has an extensive welfare department, operating night schools for foremen and assistant foremen and a school for apprentices, who are trained to become foremen and expert mechanics.

Used Car Bargains

Our used cars include:
1914—Chalmers "Master Six."
1913—Hudson "Big Six."
1914—Hudson "Light Six."
1914—Michigan 5-passenger.
1912—Overland 5-passenger.
Also rebuilt Cadillacs of all models.

Crispen Motor Car Co.,
413-417 S. Cameron St.

BROOM COMPANY'S PLANT BURNS
Special to The Telegraph
Reading, Pa., Nov. 27.—The Reading Broom Company's plant at Blanton was destroyed yesterday by a fire which started in the boiler room, en-

tailing a loss of \$20,000. Two carloads of broom corn and about 500 dozen finished brooms were burned. George Schmeck, of this city, was president and general manager of the company.

Thank your lucky stars

if you feel that way about it when you get good service from your tires, but there is a deeper and more understandable reason.

The tire that you and every other motorist undoubtedly want most is not the result of hit or miss efforts.

Some great factory has gone to the limit in giving you the best that human ingenuity can produce, and stakes its reputation on the result.

That's how Diamond Tires are built and the great factory behind them is the largest rubber factory in the world.

The horse-shoe was all right to nail over the barn-door, but for the garage four Diamond Tires on the wheels of your car constitute the best omen of good luck we know anything about.

DIAMOND "FAIR-LISTED" PRICES:

Size	Diamond Squeegee	Size	Diamond Squeegee
30 x 3	\$ 9.45	34 x 4	\$20.35
30 x 3 1/2	12.20	36 x 4 1/2	28.70
32 x 3 1/2	14.00	37 x 5	33.90
33 x 4	20.00	38 x 5 1/2	46.00

Diamond

"SQUEEGEE TREAD" TIRES

J. C. Werner Tire Co.

104 South Second Street
Distributor For
Diamond Tires, Gasoline, Oils and Accessories

Willard

STORAGE BATTERY

We Make Old Batteries Young

Storage Battery Service is our business. We can show you how to keep a young battery in good condition and give an old one a new lease of life.

The Willard Station in Your Town:
J. G. DUNCAN, JR., CO.
11 North River St., Harrisburg, Pa.
Bell 3907