

NEAL of the NAVY

By William Hamilton Osborne

(Copyright, 1915, by William Hamilton Osborne.)

CHAPTER XLVI.

A Hold-Up.

The captain of the cruiser Albany had his men scout the country round about, but—as had ever been the case with Hernandez and his nimble-footed crew—without result.

"At any rate," he said, "the rascals have run away—they've probably shown us their heels for all time. You go to Chantillo, Miss Ilington. You take that one-horse train here—we'll escort you to the train. Over at Chantillo lies the Missouri, a first-class battleship. I'll give you a note to her commander. He'll see you safe on board the South California boat."

Neal and a small guard of marines constituted Annette's escort.

Annette laughed when she saw the station—laughed more when she saw the train. It consisted of the sorriest engine she had ever seen—also the most diminutive and battered coach.

"Look here," said Neal to Annette, "come inside the station. I want to show you something."

Annette knew . . . inside she broke down and cried like a child.

"It's good-by now, Neal," she said, "I don't know what I'm going to do without you. . . I feel like . . . almost going back . . ."

"By George," said Neal, "I wish . . . but no. You'll stick it out. I know you will. I'm sure. But, if it's



"Look—See!" Exclaimed the Brute, tough on you—think of me. I feel like chucking up my job . . ."

A tin horn blew outside. "W-what's that?" cried Annette.

Mrs. Hardin and Joe Welcher rushed into the station. "The train—the train," they cried.

They were quite right. The engineer was already pulling his rusty lever. The train actually was starting up, stationary though it had seemed.

"Go ahead little one," said Neal, "good luck."

Half a mile farther down the track, out of the jungle crept two figures—each with gun in hand, each with a black mask upon his face. Across the track they piled a tree or two—these trees had been plucked up by the roots by one of these masked men.

After completing this self-appointed task, they crept back into the jungle and waited patiently.

Finally one of the men prodded the other. "Now," he commanded, "here she comes."

A faint tin horn whistle was heard around the curve. The fast mail of the Chantillo line approached. She approached, but seeing the obstruction on the track, she hesitated, halted, came to a full stop. The two masked men leaped upon the engine and held up the crew with their ever-ready guns.

Hernandez stepped into the car behind. He fired three shots. He aimed at no one. The shots had their effect—on two persons at least. Joe Welcher ducked at once. Mrs. Hardin followed suit. "No one was hit. Annette alone retained her nerve."

"So," she said fearlessly, "it's you again. And where is your charming friend, Miss Irene Courtier?"

"Brute," cried Hernandez, throwing off his mask, "bring those two men here."

The Brute brought them. "Take the bell cord," said Hernandez to the train crew, "and tie this young girl up."

Hernandez, still with his gun on guard, bent over the girl. He plucked his hand into her breast, and with a jerk tore the chamouis bag from her neck.

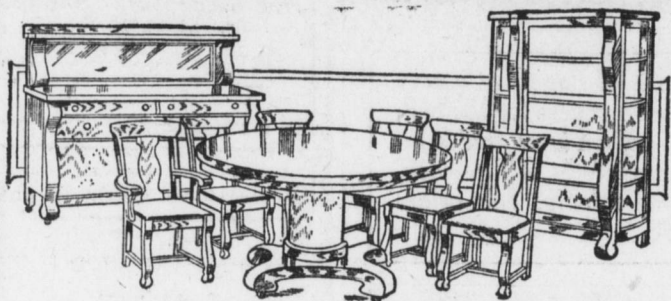
[To be continued.]

Try Telegraph Want Ads

Brighten the Home For Thanksgiving

New furniture for the diningroom—a new bedroom suite to add to the comfort of the Thanksgiving guest—a new piece here and there to brighten the home. We are naming some unusually attractive prices on these for FRIDAY and SATURDAY'S selling—prices that mean REAL savings—we promise that your dollar will have its greatest purchase power here—and we mark every piece to that end. We offer you only such merchandise as will give you entire satisfaction, and we guard by careful and critical selection, that nothing but reliable merchandise gets into this stock.

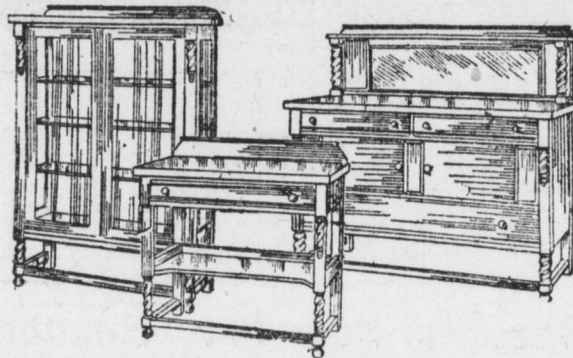
Extra Good Colonial Suite \$95



This serviceable Dining Suite is in the popular Colonial style, with heavy corner posts and scroll feet; has a large buffet with quartered oak top, one drawer lined for silver. The china closet matches exactly, and you can have your choice of either the round ends or square ends. The chairs have genuine leather seats, and consist of five chairs and one arm chair to match. The table has a massive pedestal base and can be extended. The suite consists of nine well-made pieces.

You can buy them separately if you wish.

Charles II Jacobean Oak Suite \$79



A touch of quaintness surrounds this handsome diningroom suite. It is a reproduction from the Charles Second Period, with the characteristic rope turnings of that period of artistic furniture. The buffet is an extra large one and measures fifty-four inches, with plank top. The pieces are all well made and are a complete match.

Buffet \$35.00 China Closet \$29.50 Serving Table \$15.00

Handsome Suite Sheraton Mahogany \$145

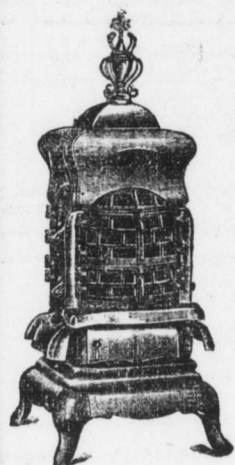


This suite is one of our most popular of mahogany diningroom suites. It is designed on the straight lines of the Sheraton Period. The buffet has a large mirror and is arranged with the long linen drawer at the bottom; has a good sized china closet of the square end style. The chairs have genuine leather seats and match in design the rest of the pieces.

The suite, which consists of nine pieces, is finished in the dull finish, and would add to the attractiveness of any diningroom.

Buffet \$47.00 China Closet \$37.00 Table for \$30.00 Set of Chairs \$35.00

A Burns Heater Will Add to the Thanksgiving Cheer



They are guaranteed never to throw gas and will give you lots of heat with little coal consumption.

Park Oak

A good single heater, including pipe . . . \$9.50

Grand Ringgold

A handsomely nicked square heater, including pipe . . . \$33.50

Fair Oak

A round double heater, including necessary pipe . . . \$28.00

The Thanksgiving Dinner

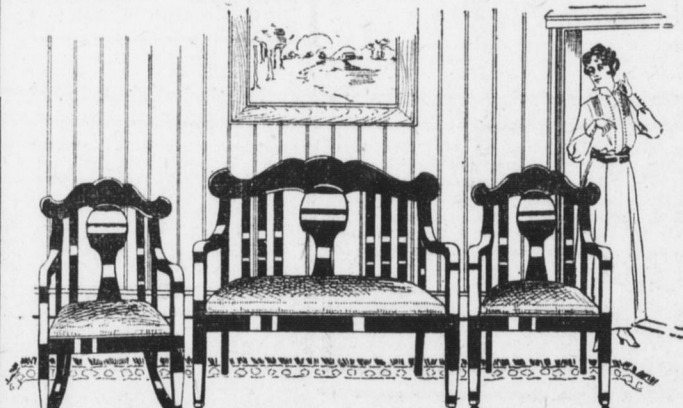
will not be spoiled if it is cooked in a BURNS PERFECT Range. Burns Perfect Ranges come in all sizes, priced upward . . . \$26.50



The Energy Range

A Good Baker . . . \$19.00

This Good Looking Parlor Suite \$23.50



It is a long time since we have been able to offer you such a good value in a livingroom suite. The suite consists of three pieces with removable cushions; the frames are well made and finished a dull mahogany. The pieces are of generous size and are unusually comfortable. The suite consists of sofa, rocker and arm chair, and is a big value.

Handsome Velvet Rug Size 9x12 Oriental Colorings \$20.50

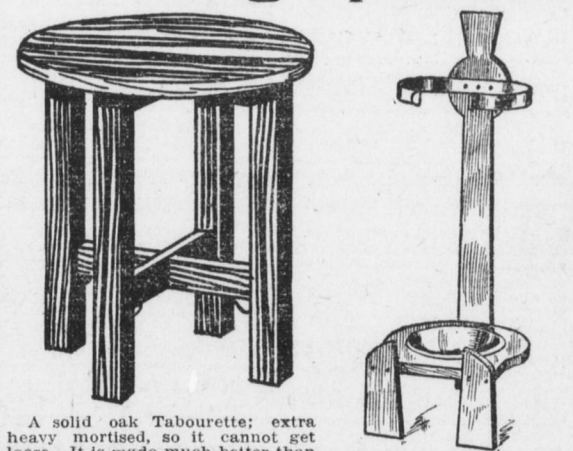
One of these rugs will add to the appearance of your diningroom. The designs are attractive, the colorings are unusual.

Brussel Rug, size 9x12, handsome design \$15.00
Burma Rug, rich colorings for bedrooms, size 9x12 . . . \$17.50
Axminster Rug, beautiful effects, in all colors, size 9x12 . . . \$25.00
Wilton Rug, all wool face, size 9x12, \$35.00

Thanksgiving Specials of Blankets and Comforts

Figured COMFORTS, large size . . . \$1.29
COMFORTS, bordered design, cotton filling \$2.50
COMFORTS, wool filled, silk border \$6.50
BLANKETS, gray wool, double size \$1.50
BLANKETS, cotton, woolnap finished \$3.00
BLANKETS, wool, full size . . . \$5.50

Two Big Specials



A solid oak Tabourette; extra heavy mortised, so it cannot get loose. It is made much better than the usual Tabourette, so you need not fear to put a heavy plant on it. They are all finished in fumed oak, and we consider them an unusually good bargain.

It is a \$2.00 value; special . . . 98c

A handy Umbrella Rack that can be used in the hall or reception parlor. The wood portion is oak.

A \$2.00 value; special . . . \$1.29

Charge Accounts Opened Easy Convenient Payments

Burns & Co

FURNITURE, FLOOR COVERINGS
28-30-32 SO. SECOND STR. HARRISBURG

Our CREDIT SYSTEM lightens the burden of buying without imposing a tax for the convenience.

CUNNINGHAM ON STATE'S HIGHWAYS

Makes Interesting Address to People at Johnstown on Occasion of His Visit

Special to The Telegraph
Johnston, Pa., Nov. 11.—State Highway Commissioner R. J. Cunningham was the guest of Johnstown and Cambria county to-day the occasion being "Cunningham Day," set aside to honor him. The commissioner was entertained at Johnstown by the Johnstown Chamber of Commerce at which he delivered an address.

commissioner then discussed the re-organization of the State Highway Department, made necessary by the failure of the Legislature to provide sufficient funds for the construction of new highways. He called attention to the fact that the Sproul Highway System, as at present constituted, comprised 10,200 miles of highways. Inasmuch as funds for construction purposes are not available, it had become necessary, he said, so to conduct the department as to provide for the adequate maintenance of this vast mileage.

The commissioner then compared the Pennsylvania highway situation with that of other States where adequate funds have been provided for the proper construction of modern highways. He cited the appropriation made by the 1915 Legislature to the State Highway Department and told how it was divided and what funds were actually available for maintenance work. In this connection the commissioner declared that it was the policy of the department to maintain the improved roads as well as the earth roads.

Department improved more than 8,262 miles of the 10,200 miles of the State Highway System. Of this mileage 1,880 are stone or other hard surfaced roads; 575 are dirt, gravel and shale and 5,824 are earth roads. He called attention to the fact that 397 miles of this maintenance was re-surfacing work on roads already constructed.

TO PUT ON FLESH AND INCREASE WEIGHT

Good Advice For Thin People

"I'd certainly give most anything to be able to gain a few pounds and stay that way," declare many thin men and women. Such a result is usually not impossible despite past failures. Most thin people are victims of malnutrition, a condition which prevents the fatty elements of food from being taken up by the blood as they are when the powers of nutrition are normal. Instead of getting into the blood much of the fat and flesh producing elements stay in the intestines until they pass from the body as waste.

NOTE—Sargol is recommended only as a flesh builder, and while it has produced excellent results in cases of nervous indigestion and general stomach disorders, care should be taken by those using it who do not want to increase weight.—Advertisement.