

PRINCETON MEETS HARVARD IN IMPORTANT BATTLE--CENTRAL VS WILKES-BARRE

CLARK FACTOR IN PENN STATE GAME

Lehigh Falls After Hardest Battle This Season; Berryman on Long Runs

Special to The Telegraph State College, Pa., Nov. 6.—Clark, the former Harrisburg High school star, and fullback on Penn State's team, was a big factor in yesterday's downfall of Lehigh. He made big gains that brought a 7 to 0 victory for Penn State.

The game was by far the best exhibition of football seen on Beaver Field this year, and gave the Pennsylvania Day crowd plenty of excitement from whistle to whistle. State sent Higgins across the line for the only touchdown of the game in the first period on a pass from Ewing from the 15-yard line. The ball had been advanced from State's 40-yard line to Lehigh's 15-yard line when Ewing decided to try the pass. Ewing kicked an easy goal.

Lehigh Strong on Defense Lehigh played an impenetrable defense when in a dangerous position, and Cahall's punting took them out of danger. In the first half the State eleven outgained Lehigh three to one on runs, though on kicks Cahall had a slight advantage. State's gains were made chiefly on runs by Berryman, who displayed the same form which has made his admirers name him the best halfback in America, and Ewing, and on line plunges by Clark. He played the best game he has put up this season, and whenever a few yards were needed for a first down Clark was called upon to deliver them.

Lehigh opened the second half in a way that would not be denied, and had been able to keep up their wonderful attack a different score might have resulted. Berryman, the ball in their own territory they advanced it by terrific plunging to State's 10-yard line.

A brace by the Blue and White enabled them to take the ball on downs, and Clark speedily kicked out of danger.

Table with columns for Lehigh and State players and statistics. Includes names like Higgins, Wood, Miller, Painter, McDowell, Czarniecki, Thomas, Ems, Berryman, Yeager, Clark, and various stats.

Tech's Third Team Wins From Lincoln Grammar

Tech's third team yesterday defeated the Lincoln Grammar eleven, score, 7 to 6. Both teams were strong on the defensive. Tech's squad at times showed a weakness in interference that allowed Lincoln to make large gains. Back was a Lincoln star, Moltz and Ebner played a good game for Tech. The line-up and summary:

Table with columns for Tech and Lincoln players and statistics. Includes names like Compton, Piefer, Brough, Kay, M. Miller, Frock, Lands, McGann, Ebner, Moltz, Hoerner, and various stats.

CENTRAL ELEVEN HAS HARD BATTLE

Meets Wilkes-Barre in Annual Game Today; Tech Gives Steelton Another Trial

Backed by 600 enthusiastic rooters, Central High eleven this afternoon lined up against Wilkes-Barre High at Island Park. The game was a hard proposition for the local team. The "Coach Barons" have been winning games from college freshmen, and show form equal to that of Greensburg.

School spirit was strong. Central students had the Commonwealth band and marched to the island. There were songs and cheers before, and during the game. Local officials were in charge. Harris of Carlisle, was referee, and Pendergast, of Villanova, umpire. The head linesman was Charles Heffner of Central. Last year Wilkes-Barre won from Central, 9 to 6.

Tech Plays Steelton The other important game this afternoon is between Tech and Steelton on Steelton's field. The Whitney bunch went up against a stronger team than they played in Harrisburg three weeks ago or was tackled by Central. The local eleven will offer for their defense a number of new formations and are hopeful they will come out of the game with an overwhelming score.

The Harrisburg Academy went to Wenonah for a game with the military academy eleven of that place. Coach Tatem feels certain he will have another victory to the credit of the local school. The Academy team has been showing winning form all season.

Elk Bowlers Show Form; Athletics Win Close Match

The Elks bowling league is showing activity. Last night the Red Sox lost to the Athletics but pulled out two games that help in the season's averages. The totals were Red Sox 2155 and Athletics 2215. Early had high scores, 190 and 505. The scores and standing follows:

Table with columns for Athletics and Red Sox players and statistics. Includes names like Banks, Lewis, Conly, Williams, Early and various stats.

University of Chicago to Play Baseball in Japan

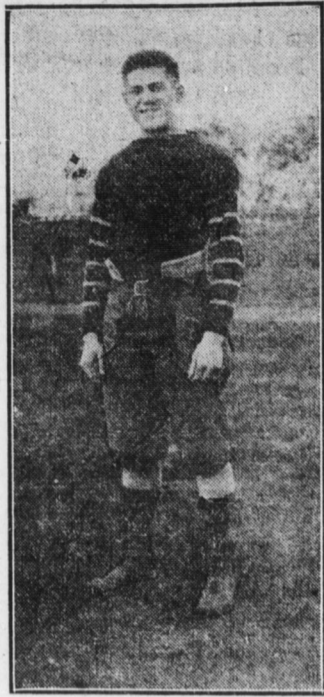
The University of Chicago baseball team, which is now in Japan for an international series of games, played its first game before twenty thousand people in Tokyo, winning over Waseda University by a score of 5 to 3. Its second game, that with the University of Keio, resulted in a score of 4 to 1 for Chicago; and in its third game, Chicago defeated Waseda University a second time, the score being 5 to 0. The team, with Coach Harlan O. Page, who was a member of the team that visited Japan five years ago and won a remarkable series of victories, will return to the University in December. They left Kobe, Japan, on October 22 for Shanghai, where they were entertained by Nathaniel Pfeffer of the class of 1910, and after a visit at Hongkong sailed for the Philippine Islands.

JUNIORS WANT GAMES The West End Juniors, a newly organized basketball five, would like to arrange games with all teams whose players' ages average 17 years. Address, Robert E. Stair, 2906 Wood alley.

CENTRAL HIGH STARS WHO ARE SHINING THIS SEASON



HOUTZ, Fullback.



ROTE, Captain, Quarterback.



FRANK, Left Guard.



ZIEGLER, Left Halfback.



SEILHAMER, Left Tackle.



HILTON, Left End.

Contrary to all expectations Paul Smith, the High School coach, has developed a wonderful fighting team. It was thought the Central squad lacked material. The work of the local eleven for three weeks has proved the contrary. Teamwork is a big feature. Every player on the squad has figured in the good work. The stars pictured above have been doing special work. In every game they pulled off some attractive feature that is making Central a strong contender for this season's local championship. Captain Rote is proving a good leader.

TWO CHANGES ON BIG FAIR CIRCUIT

Reading May Succeed Kutztown and Pottstown; Harry B. Schall, President

Special to The Telegraph Philadelphia, Nov. 6.—Several changes are expected on the Big Fair circuit as a result of the annual meeting held here yesterday. It is probable Kutztown and Pottstown will drop out, and Reading admitted.

The election resulted in the choice of Harry B. Schall, Allentown, president, vice John Bollman, of Lebanon; S. H. Wilson, Wilmington, Del., vice-president; L. P. Randall, Trenton, N. J., secretary and treasurer.

The following old dates held by the nine associations were adopted tentatively, being subject to change on January 20, 1916: Lebanon, Pa., August 8-11. Pottstown, Pa., August 15-18. Kutztown, Pa., August 22-25. Pottstown, Pa., or Reading, Pa., August 29, September 1. Nazareth, Pa., or Mt. Holly, N. J., September 12-15. Allentown, Pa., September 19-22. Trenton, N. J., September 25-30.

PLANS STRIDES ALONG ALL LINES

[Continued From First Page.]

more than 80,000 square feet of floor space, and twenty-two private dwellings, costing many thousands of dollars, have been completed. Now plans are being drawn for a great Social Center Building, the only one of its kind in the world. It will be five stories high with floor dimensions of 360 by 240 feet.

One of the largest improvements completed was the water works. For more than a year experts were employed to find the best possible water within reach of Hershey. They found it in the foothills of the Blue Ridge mountains flowing down Manada Valley in Manada creek. This whole supply was captured for Hershey. But to remove any possibility of a doubt a \$100,000 filtration plant was built and this mountain water is put through this plant and pumped to the 1,000,000 gallon concrete reservoirs on the summit of the heights 200 feet above the town and the factory.

Filtered Water Everywhere Thus every drop of water used in the factory or the town is filtered mountain water. A modern chemical laboratory watches the flow daily and makes regular tests. So strong is the pressure of this supply that it will throw a stream over any building in the town. Even a fire—if Hershey had one—would be put out by filtered mountain water.

Sugar Refinery Built Another big addition to the town's industries was a sugar refinery. Only cane sugar is used and the Hershey buyers obtain the best Cuban

coal and lumber house of Mellinger Brothers, near town yesterday morning. Albert Rineer discovered Benjamin Mellinger wedged in the machinery and bleeding profusely. He had been in this position for over an hour, with his right leg broken at the knee and probably internal injuries. Mellinger while attempting to start the machinery fell and became entangled.

New County League Is Plan of Lebanon Manager

At a meeting to be held to-morrow at Lebanon plans will be discussed for a baseball league to include teams from four counties. Officials from Central, Dauphin-Perry and Dauphin-Schuylkill leagues have been invited to send representatives. Harrisburg has also been asked to enter a team. The desire is to have teams from Reading, Lancaster, Lebanon, Steelton, Ephrata and Harrisburg, but local backers, it is said, are not favorable to an organization with towns that cannot show the same percentage in attendance. Steelton will in all probability send representatives. Edward J. Lynch, of Lebanon, is back of the project.

Republican Victory in Thirteenth Ward



GEORGE B. SPROUT In the re-election of George B. Sprout as alderman of the Thirteenth ward Republicans scored a decisive victory. The present incumbent is returned to office by a majority. He was on one ticket, while his opponents depended upon the Democratic, Washington and Socialist voters for help. The official vote shows the following: First precinct—John S. Lutz, D., 45; A. W. Hoster, W., 19, S., 8; George B. Sprout, R., 119. Second precinct—John S. Lutz, D., 53; A. W. Hoster, 4, 74, S., 4; George B. Sprout, R., 136. Totals—Lutz, 98; Hoster, 205; and Sprout, 255. Majority for Sprout, 32.

NARROW ESCAPE FROM DEATH West Willow, Pa., Nov. 6.—Hearing the cries of distress as he passed the

HARVARD PLAYS PRINCETON TODAY

Is Important Battle in College Circles; Pick Crimson to Win; Other Big Battles

By Associated Press New York, Nov. 6.—Harvard's annual football game with Princeton in the Palmer Memorial Stadium at Princeton to-day stands first in importance among the eastern gridiron battles. Friends of Harvard look to the Crimson team to prove, despite its defeats this season, that it is still entitled to hold its old-time place among the leaders. Charles E. Brickley, former Harvard star drop kicker, said he expected Harvard to win by a close margin.

In her game with Brown at New Haven to-day Yale is expected to show some of the results of Shevlin's efforts to lift the Blue team out of the slough of defeat. Yale men believe that he has put new power into their team and expect it will win.

Hot Contest in West Pittsburgh and Washington and Jefferson are expected to furnish a hot contest at Pittsburgh and Pennsylvania, and Dartmouth are considered equally matched in their games at Boston. Other important games are:

Notre Dame vs. Army at West Point. Bucknell vs. Navy at Annapolis. Carlisle vs. Holy Cross at Worcester. Swarthmore vs. Lafayette at Easton. Franklin and Marshall vs. Haverford at Lancaster. Johns Hopkins vs. Gettysburg at Baltimore. Muhlenberg vs. Lebanon Valley at Allentown. Ursinus vs. Albright at Collegeville.

Princeton's Big Squad Includes Pennsylvanians

Special to The Telegraph Cambridge, Mass., Nov. 6.—Eight of the varsity football squad at Princeton are Pennsylvanians. Of the regular eleven to face Harvard to-day four are Pennsylvanians. Higley, the crack right end, is a Conshohocken boy and attended Haverford. Captain Glick, quarterback, is a Pittsburgh product and was graduated from Pittsburgh high school. W. McLean, left tackle, is a Philadelphia youngster and a Hill School graduate. Left Guard Hogg is a Pittsburgh boy also, and was substitute fullback, hails from St. David's. C. G. Semmens, substitute center, is a Turtle Creek boy; J. E. Gowen, also substitute center, hails from Philadelphia, and J. E. Butterworth, substitute guard, comes from Germantown.

CRIMSON ELEVEN MEETS PRINCETON

Championship Honors May Come With To-day's Victory; Both Teams in Good Shape

By Associated Press Princeton, N. J., Nov. 6.—With ideal football weather for the annual game between Princeton and Harvard to-day the thousands of followers of the rival teams who were here from all sections of the east expected to witness one of the most spectacular struggles of the season.

The Tiger coaches considered their eleven 20 per cent. stronger than when Dartmouth was defeated two weeks ago and while not over confident were hopeful of victory.

There were many in the Princeton camp who said it was the first time in four years that the Orange and Black had entered into a battle with Harvard on apparently even terms.

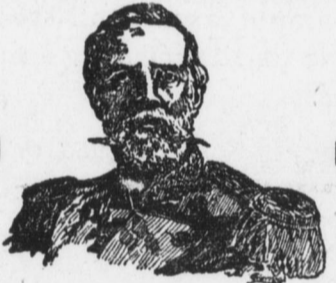
The Cambridge players came in from New York on a special train during the morning and were given a great welcome by hundreds of Harvard men who had preceded the squad here.

Members of the scrub elevens of the two institutions who have worked hard all season giving practice to their respective varsity teams played a game in the forenoon which attracted a big crowd.

The line-up: Princeton. Higley, l. e. Soucy, l. e. McLean, l. t. Gilman, l. t. Nourse, l. g. Dammun, l. g. Genner, c. Wallace, c. Hogg, r. e. Taylor, r. e. Parselle, r. t. Parson, r. t. Lambertson, r. e. Harte, r. e. Glick, capt. q. b. Watson, q. b. Shea, l. h. b. King, l. h. b. Tibbott, r. h. b. Boles, r. h. b. Driggs, f. b. Mahan, capt. f. b. Officials, Referee—W. S. Langford, Trinity. Umpire—Dr. Carl Williams, Pennsylvania; Field Judge—E. S. Land, Annapolis; Headlinesman—G. N. Bankart, Dartmouth. Time of periods, 15 minutes each. Game starts at 2 p. m.

Cumberland Valley Railroad TIME TABLE

In Effect June 27, 1915. TRAINS leave Harrisburg— For Winchester and Martinsburg at 5:03, 7:52 a. m., 2:40 p. m. For Hagerstown, Chambersburg, Carlisle, Mechanicsburg and intermediate stations at 5:03, 7:52, 11:53 a. m., 3:40, 5:37, 7:45, 11:00 p. m. Additional trains for Carlisle and Mechanicsburg at 9:48 a. m., 2:16, 3:26, 6:30, 9:35 a. m. For Dillsburg at 5:03, 7:52 and 11:53 a. m., 2:16, 3:40, 5:37 and 6:30 p. m. Daily. All other trains daily except Sunday. H. A. RIDDLER, G. P. A.



TOBACCO for King Oscar 5c Cigars, when the quality is right up to the King Oscar standard, is bought in such quantity as to preclude any shortage if the next year's crop should not be up to the mark. This is one of the reasons for the remarkable regularity of the quality of King Oscar 5c Cigars

It is never necessary to substitute other filler—there's always enough on hand. There's only one kind of domestic and Havana leaf good enough for the brand that is noted for its 24 Years of Regular Quality

Model E International Motor Truck \$950. Model E, of 1,500 pounds capacity, is built to insure the owner against delays. Simple, sturdy, reliable construction and ability to work steadily show in every line and in every detail. The type of motor, the simple control, effective clutch, Bosch ignition system, thorough oiling arrangements, sealed governor, and accessibility of all parts, these all help to make Model E a money-maker in any line of business that requires a steady-going truck of 1,500 pounds capacity. This price includes chassis and express body, as shown above. Bodies of different designs, suitable for any business, can be furnished. Besides Model E, the full line of International Motor Trucks includes 1,000-pound capacity Models MA (air-cooled) and M (water-cooled) at \$600 and \$710, and a 2,000-pound capacity, Model F (chassis only) at \$1,500. All prices cash f. o. b. Akron, O. Write the nearest address for complete information about the trucks and about International Harvester service before and after the sale. International Harvester Company of America (Incorporated) MOTOR TRUCK DEPARTMENT 619-621 Walnut Street, Harrisburg, Pa. Other Branch Houses—Baltimore, Md.; Elmira, N. Y.; Philadelphia, Pa.; Richmond, Va.; Buffalo, N. Y. Agents Wanted in Unoccupied Territory. Write, Wire or Phone

Attention! Mr. Motorcyclist, of course you want a New Motorcycle for 1916, why not trade your old mount in, as part payment on a 1916 HARLEY-DAVIDSON HEAGY BROS., 1200 N. Third St. CASH OR EASY PAYMENTS DISTRIBUTORS FOR DAUPHIN AND CUMBERLAND COUNTIES OPEN EVENINGS