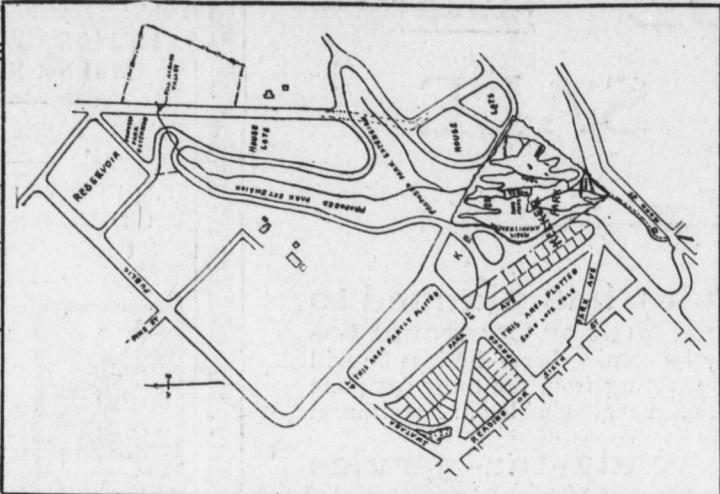


# ON EVE OF SECOND FIELD DAY IN LUTHER R. KELKER TRACT PROMINENT STEELTON MEN PLEAD FOR COMPREHENSIVE PARK SYSTEM



REMOVING DEAD WOOD



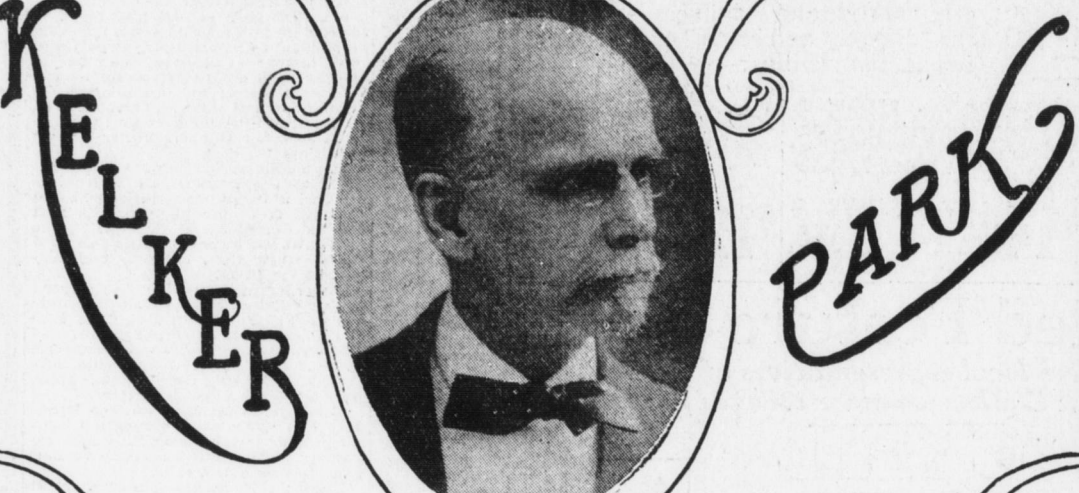
MAP OF PARK



HIGH SCHOOL FORESTER AT WORK



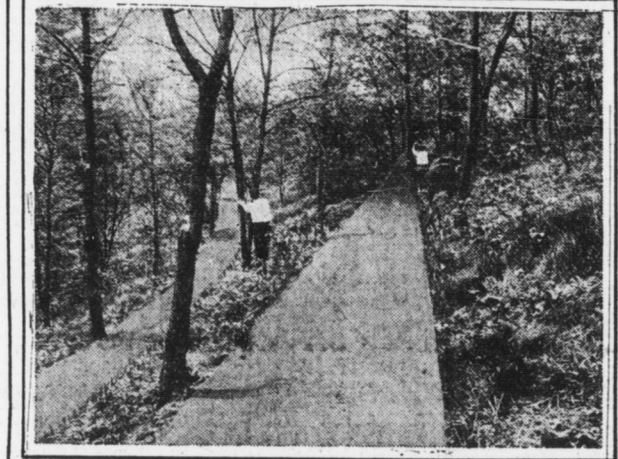
BLAZING A TRAIL



LUTHER R. KELKER DONOR OF PARKS



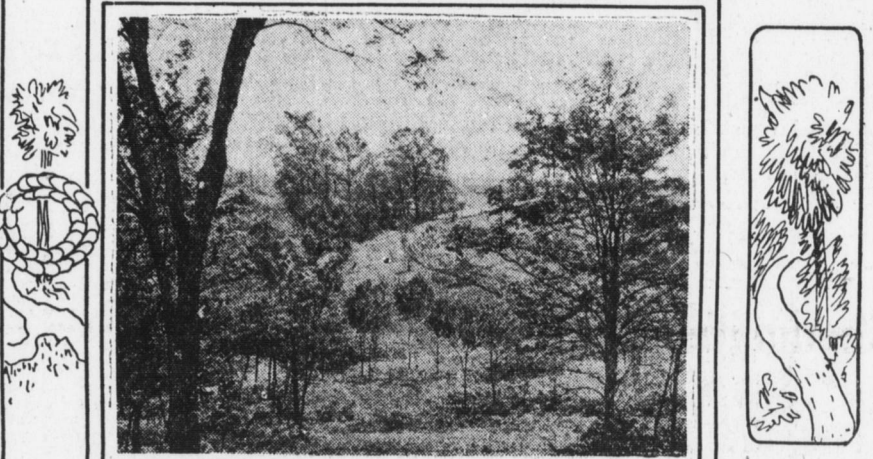
WORKING IN THE WILDWOOD



TRAILS AFTER 3 HOURS WORK



IN OUR OWN PARK WE ALL SMILE



A PRETTY VISTA

—Photos by J. H. McFarland Co.

## Municipal League, Civic Club and Prominent Steelton Citizens Unite in Urging Establishment of An Adequate Playground System and More Parks; Want Comprehensive Plans With Luther R. Kelker Tract as Nucleus; Leading Residents Give Views on Subject

FORMULATION of a comprehensive plan for the development of an adequate system of parks and playgrounds for Steelton, is urged by prominent men of the borough through interviews with the Telegraph to-day. Ten years ago the tenth of May, last, Luther R. Kelker, a public-spirited citizen, presented ten acres of wooded land to the borough for park purposes. Until six months ago this tract stood idle. Rank weeds grew up, brambles flourished, stately trees lost their beauty through neglect and the whole place became a rank wilderness.

Then after a campaign of publicity, the Municipal League, an organization of prominent, public-spirited men of the borough, urged Council to have plans for the development of the tract drawn. The work was authorized and Warren H. Manning, the famous Boston landscape architect, who designed Harrisburg's magnificent park system, was selected to do the work.

When the plans were completed it was found there was not sufficient funds in the borough treasury to pay for development of the tract. Again the Municipal League came to the front with the suggestion that a field day be held in the tract and that all the work be done by volunteers. This was done. And in this way the development of Kelker Park was started.

Although the volunteers were many and although they toiled hard, one day was far too short a time in which to transform the briar-covered, neglected tract into a pretty recreation spot. So to-morrow, under the auspices of the Municipal League another field day will be held. Again volunteers will grab briar bushes, trim trees and otherwise help get the tract in shape for park purposes.

be gradually reduced until they are eliminated, said the landscape artist. Use should be made of the pretty winding stream that flows down through the hollow, he urged, by the construction of a shallow wading pool. "This could be done at a trivial cost," it was pointed out by the expert, "by building a small mud dam across the stream near Mohr street. In this pool, so constructed, the smaller folks who are now forced to play in the borough streets while speeding automobiles are whizzing by, could wade and splash and play to their heart's content—and in safety.

"Older folks could obtain pleasure from the park if a few tables and benches were added for picnic purposes. Even as it is, however," said Mr. Manning, "the park is suitable for outings because there is plenty of rich green grass."

Mr. Manning was informed of Council's plan to build a bandstand on the lawn at Front and Angle streets and asked whether, in his estimation, it would not be more advisable to erect it on the publicly-owned park, instead of on this private plot. This suggestion he strongly endorsed. "The natural amphitheater in which the stand could be built in Kelker Park would cut down the cost of benches," said he.

"However," said Mr. Manning, "if Council would not care to erect the bandstand in Kelker Park, they might still make arrangements for band concerts there by building a concrete bandstand. "This," he explained, "could be done very cheaply by making a slightly raised concrete base upon the site already selected in the park. Steel or wooden posts could be placed on each corner to support an awning, which would protect the musicians from the elements. This awning could be removed at will. The musicians could sit on chairs which might be stored beneath the bandstand floor."

who would devote his entire time to the work. "I feel," said Mr. Holton, "that we have every reason to be proud of what has been accomplished. The time of most of those who have been active, however, is very much taken up with business affairs and until someone is put in the position where he can devote more than passing attention to the subject, we cannot hope to make the best possible headway. "My thought is that such a recreation supervisor should not only have charge of outdoor work but during the winter months would plan and carry out indoor entertainments, using the school buildings and similar places as social centers. In order to achieve results, however, the interest and cooperation of more of our people is essential. We have a good many boosters, but need more. Let everyone get busy."

Mr. Wright was asked whether he thought the plans of Warren H. Manning, the landscape architect, for the development of Kelker park could be fully carried out. These plans, it must be remembered, include much land in the proposed park that does not now belong to the borough.

"I see no reason why Mr. Manning's plans cannot be carried out to the letter," said the Municipal League president. "While the architect has been rather liberal in the use of land not owned by the borough, I believe that if the authorities can come to a full realization of the real need in Steelton for a comprehensive system of parks and playgrounds and do their share toward obtaining them, then I believe property owners whose land has been included in Mr. Manning's plans could see their way clear to donate this ground for recreation purposes."

According to the plans drawn by Mr. Manning, a large slice of land now owned by Brightbill & Wright is included in the proposed park. This land extends from Sixth and Swatara streets to Kelker park. It cuts diagonally through a plot about 700 feet square and is intended to be used as the site for the formal entrance to the new park. In the plans the proposed road would be about fifty feet wide and would take an easy grade from Sixth and Swatara streets to the park. It is this tract that it is thought Messrs. Wright and Brightbill would donate to the borough if Kelker park development is continued.

"That his tract would be willing to donate this tract to the borough provided the municipal authorities took some action that showed they intended to carry out Mr. Manning's plans along other lines was intimated rather strongly by Mr. Wright.

of Brightbill & Wright, and president of the Municipal League. "The results of the field day exercises," he declared, "show conclusively that the people of Steelton want a park. It's now up to council, I believe, to complete the project. Of course, I know that the borough does not have much money available at this time for park development purposes, but I think it would be wise plan to look ahead and set aside a certain amount of money for park and playground purposes each year in the annual budget."

Wigfield Urges Early Action on Park Plans. The necessity of at once completing the development of Luther R. Kelker park and formulating a comprehensive plan for park and playground extension is pointed out by Fred Wigfield, burgess of Steelton.

Since his election to the office of chief executive of the borough, Burgess Wigfield has been a staunch advocate of the development of Kelker park and has repeatedly called attention to Steelton's need for recreation places for the borough's youth. "The Municipal League cannot be commended too strongly," said he, "for its efforts towards obtaining the development of Kelker park. I was indeed surprised when I strolled out there a few days after the field day exercises. Just as it is, Kelker park is a picturesque spot. Really I can't think of any place hereabouts that is as admirably fitted by nature for recreation place. I sincerely hope that some way can be found to complete the project and shall certainly do everything in my power towards obtaining a comprehensive park and playgrounds system."

Civic Club Works For Additional Playgrounds. One of the strongest backers of the movement to provide a comprehensive system of playgrounds and parks for Steelton is the Steelton Civic Club. For years this organization has urged the development of Kelker Park and the opening of several playgrounds. Until last year, when it was decided to abandon the plan on account of a lack of interest on the part of the borough authorities, the Civic Club conducted a playground in the West Side. Prior to that another play place had been maintained on Cottage Hill. An instructress was employed by the club at its own expense.

When the West Side playground was closed the Civic Club did not abandon its activities in behalf of the children. Instead, an active campaign was commenced with a view of getting the borough authorities to provide playgrounds. Although as yet there has been no tangible results from this campaign, the demand for recreation places for the borough's small folks is increasing and it will not be long until Council will be ready to make some provision along these lines.

Results Please Him. Mr. Wright expressed himself as surprised and greatly pleased with the

first field day results. He is now of the opinion that the opportunity should not be lost to complete development of the tract.

ker Park, recently, Mrs. J. M. Heagy, president of the Civic Club and one of the most ardent supporters of the park and playgrounds movement, said: "Our town is too big not to have some provision made for the children. We ought to have several playgrounds where the little ones can get off the street and play in safety. Then, too, on a regular playground we could have an instructor who would watch over the children and direct their play along systematic lines.

Charles S. Davis, chairman of the park committee of the Municipal League, principal of the Steelton High school and one of the most active boosters of the park development, in a statement to the Telegraph outlines his ideas about park plans. He says: "No time should be lost in working out a satisfactory solution of Steelton's park problem. Every wooded tract within easy reach of the borough should be acquired with sufficient additional ground added and planted with trees to provide park facilities for the future needs of the town.

Kelker Park First. "The first work before us is to beautify and make available the tract we now have, the Luther R. Kelker park. Considerable work has been done, we hope to see more done on Saturday, but the large things remain to do. These include the new street from Swatara to Spruce and Park avenue, a proper entrance at the latter place, a bridge across the stream, dams for wading pools, graded driveways, a bandstand, etc.

What Should Follow. "The second step should be to acquire the wooded tract back of the present park and leading to the Reservior. Some additional land purchases there and planted with trees would provide a beautiful hill-top park. From the Reservior a short stretch would lead to another partly wooded ravine running toward the County Home where connection could be made with the Harrisburg Parkway. "The Pine street ravine could be connected at Harrisburg street with the wooded part of the Adams street ravine, which should also be developed. There are also possibilities of preserving wooded strips along Swatara street. These are all within easy reach of the heart of the town. Other tracts lying farther east and west should also be acquired, thus working out a comprehensive plan that will do much for the happiness and welfare of our people."

## May Develop Park at Trivial Cost—Manning

How Kelker Park may be transformed into one of the prettiest recreation spots in Central Pennsylvania, at a trivial cost, was outlined by Warren H. Manning, the famous Boston landscape architect, who planned the place, in a recent interview for the Telegraph.

trees, and a winding stream of running water. "A few rows of low-growing evergreen trees planted along the western boundary line of the park would add attractiveness. Some more trees should be planted around the music concourse," suggested Mr. Manning.

## Urges Employment of Park Supervisor

Looking toward the further development and maintenance of a comprehensive system of parks, playgrounds and recreation places for Steelton, Charles R. Holton, secretary of the Municipal League, in an interview to-day, suggested that all facilities of this character, including the Cottage Hill athletic field, the Luther R. Kelker Park and such playgrounds as are available, or could be made available, be put in charge of a superintendent

## Will Donate Land If Tract Is Developed

A hint that ground for the site of a formal entrance to Luther R. Kelker park may be donated to the borough, provided development of the tract is continued, was given this morning in an interview with Harry C. Wright,