

Visitors---Harrisburgers

A Picture Insight

Into Our

Eyesight Service



You are cordially invited to inspect our modern
Optical Store. No money need be spent, just come
and rest in our spacious reception room.

J. J. Belsinger

205 Locust Street Opposite Orpheum Theater
Eyes Examined, No Drops Used
Perfectly Fitting Glasses, Guaranteed As Low As \$2.00.

MISSIONARIES OF MAMMON

Christian leaders and teachers speak of the connection of missions and commerce as though it were a good thing. They tell how the missionary opens up a new country for foreign trade. We ought to go very light on such talk. That is a dangerous connection; not one to be

proud of. The native has often had far too much reason to think that the Christian nations are interested chiefly in getting his money, in involving him in their wars. The missionaries have one message—the message of Jesus. It is the message of salvation, of world brotherhood, of world co-operation, not of world competition. They will help bring to pass Christ's dream for the world as they are true to this message.—The Christian Herald.

charity, it is often not a semblance of real sacrifice of real love. Great giving always involves the parting with that which is dear to us. The father knows it when he takes voluntarily the hard-earned savings of a lifetime and spends what might make his old age comfortable and free from care on the education of a son or a daughter. It is the divestiture of a thing we want for the sake of another—this is the proof of real affection.—The Christian Herald.

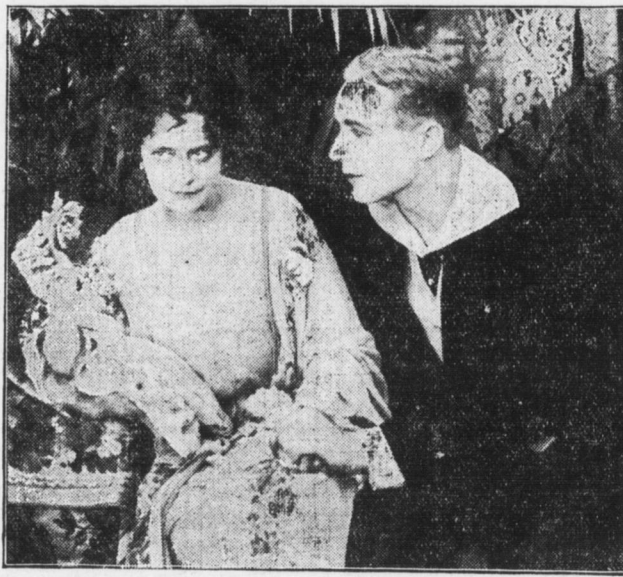
THE TEST OF FRIENDSHIP

What is it to be loyal to a friend? It is willingness to give up for that friend something that we ourselves want. We sometimes give our cast-off clothing, or a bundle of which we have become tired, to the poor or to an acquaintance. It is charity, it is

BIG TRIAL LIST

Sunbury, Pa., Sept. 23.—Seventy-one cases have been returned for trial at the September term of Northumberland county criminal court, which opens here next Monday. It is the largest list in years.

BETTY NANSEN, THE ROYAL ACTRESS AT THE COLONIAL TODAY



Betty Nansen discusses Florida La Tosca. Betty Nansen appears at the Colonial Theater to-day in her latest William Fox photoplay, "The Song of Hate," based upon Victorien Sardou's world-known "La Tosca." Speaking of the character of Florida in a recent interview, Miss Nansen said: "Florida is not a creature of impulse, driven by every passing wave of passion or inclination. She is a true woman with the heart and instincts of her sex. But she is brave enough, when a deep love possesses her soul, to give herself over to it, regardless of what the world may say. Faced by the most trying circumstances that can arise in a woman's life, when her very soul is placed upon the rack of self-sacrifice, the metal of her heart rings true. At the cost of her honor, she still holds to her great love and even at the last hour, when the dark shadows of fate envelop her, her woman's nobler nature saves her lover from a fearful fate. Florida La Tosca is the most interesting part I have ever played. I created the character at the Royal Theater in Copenhagen, at the special request of the author. "The Song of Hate" is in six parts and is proving one of the biggest drawing cards that the Colonial has ever presented.—Adv.

SHIPPING BREAD AND BULLETS

To the plain mind it is a little difficult to justify the simultaneous dispatch to Mexico of food and cartridges, of surgical instruments and lethal tools, of proclamations demanding peace and trainloads of Mausers with which to continue war.

Affairs in Mexico are really pretty bad. Since the night of February 22, 1913, when President Madero and Vice-President Pino Suarez were taken from the national palace and assassinated by Victoriano Huerta in the darkness back of the penitentiary, there has been nothing entitled to be looked upon as a government. Half a hundred bandit chiefs have been wrestling in a bloody struggle which has swept from Sonora to Yucatan. The miseries of the ravaged country can hardly be described. Anarchy is a word easily spoken, but as a real state of things very hard to really imagine; it is, however, the condition in which thirteen million Mexican men, women and children have been living for many months. Starvation is a thing impossible, really, in the midst of orderly civilization; to bring the mind to conceive; but there is starvation in Mexico.

Life grows cheap as we go toward the Equator, and a few score thousand killings may be no great matter down that way. The nerves of the Mexican peon are not exquisite; a Yaqui or Zapotecan boy-soldier of fourteen or fifteen will sit on his blanket and smoke a corn-husk cigaret while his torso is probed for a bullet. The cripples and the blind whom one sees by the cityful nowadays down there are not perhaps acutely conscious of their misery. In the best of times twelve of Mexico's millions have never any too much store for the pot. Yet when the daily raiders—why, it really seems to the plain mind hardly worth while to attempt to help the afflicted population otherwise than by declining to furnish further tools of affliction.—The Christian Herald.

BUYING ELIJAH'S ALTAR

Obadiah hid "one hundred of the Lord's prophets in a cave." On the west end of Carmel, below the monastery, is a large cavern, partly artificial, where, to increase its sanctity, the Holy Family are said to have rested on their return from Egypt. The "Place of Sacrifice" is some eight miles inland along the crest of the mountain, overlooking the Kishon, the whole plain of Esdraelon, Jezreel and the mountains of Galilee. Many churches and nationalities, not to mention individuals, have searched the slopes of Carmel for the exact spot when Elijah "repaired the altar of the Lord," selecting twelve stones from the ruins of the neglected altar. At the urgent request of an English lady, who thought of purchasing the site, I once made a careful study of the location suggested. While we may never

MANNING TELLS HOW RIVER CAN BE IMPROVED FOR PLEASURE WATER CRAFT

Big Channel to Rockville Bridge Problem of the Future Which Will Be Taken Up by Planning Commission

In his recent report to the City Planning Commission some interesting features of the Susquehanna basin are discussed by Warren H. Manning, of Boston, the city's landscape architect. He has made a careful survey of the West Shore conditions and reaches the conclusion that "it is not practicable to maintain a channel on the westerly side of the main island; first, because all natural channels are constantly changing, due to the ever-shifting sand and coal deposits; second, because the stone is so near the surface that even with the dam in service it would be difficult to operate near the shore without much blasting to open a channel and frequent dredging to keep it open. There is a long line of rock extending across the river between the bridges that is fully exposed in low water on this westerly side. If removed, it might tend to cause a freer flow of water through this side and carry much of the sand and coal to lower points in the river. This is the only suggestion that I have received from the experienced rivermen that might lead to a change in conditions here. There is a general consensus of opinion that the islands along the westerly shore are increasing in size, there being a distinct tendency toward the making of larger deposits in recent years. Mr. Berrier states that last year there was a deposit of perhaps six or seven acres, much of which was two feet above the surface at the upper end of Independence Island. This year the greater part of that has been carried out, leaving in many places a depth of two feet of water."

180 in Coal Fleets

In much of the area west of Forster's Island the rock outcrops near the surface, and the changes in the current are frequent. Mr. Manning found in the sand and coal business there are about six operators above the dam that have in the aggregate about 150 flats and 30 steam boats and pumps. These flats average about 50 tons per day, with a maximum of about 150 tons and a minimum of about 35 tons, and they are in operation for about seven months in average good seasons. Last year was an unusually favorable season and they were operated eleven months. It is the opinion of a fleet captain that over 100,000 tons of coal are taken out per year, and probably 50,000 tons of waste. He states also that not over a third of the coal that is pumped up is saved and that not over a third of all the deposits in the river are secured.

500 Canoes and Water Craft

Mr. Manning says there are about 500 canoes, rowboats and motorboats now used in the river basin. It is the opinion of several people who are familiar with conditions that this number of craft will be increased at least three times over in the next two years. The channel for pleasure boating should be on the eastern side of the river and should not be less than 50

feet wide nor less than 2 feet deep, in the opinion of Mr. Berrier. It would be much better if it could be made 100 feet wide. This is confirmed by other experienced river men. Mr. Hippie would have the channel at least 100 feet wide and 4 feet deep.

Boating to Rockville

On the easterly side of the river the present channel is a somewhat crooked one, being off shore by a distance varying from 275 feet to 50 feet. This channel extends from about Maclay street up to the ferry wire on the easterly side of McCormick's Island. Above the ferry wire the water is deep enough for pleasure craft over much of the surface as far up as McAlister's Falls. These falls are made by a comparatively narrow ridge of rock, through which a channel could be made to provide boating up to the Rockville bridge. Below Maclay street the dam gives sufficient water for boating over much of the area that lies east of Forster's (filter station) Island. There are a few points of rock, however, that ought to be taken out within this area and a ridge of loose rock over the lines of the water pipes from Forster's Island to the pumping station. The rivermen say that the dam is a very great help to them in the transportation of coal over all this section and they believe that it ought to have been three feet higher to have made good water for boating to McCormick's Island without the necessity of constructing channels.

The Conodogunc creek is an exceedingly attractive place for canoeing, with a reach of good water about five miles above the second dam.

It is expected that the City Planning Commission will make the survey for the proposed channel through the reefs at Maclay street this fall.

Discovery Enables Any One to Have Curly Hair

Quite accidentally some one made the discovery that the application of ordinary liquid silmerine would actually turn straight hair curly and wavy in a few hours. She told her friends about it, who in turn told others and now thousands of women have profited by the information. The simplicity and harmlessness of this method, and the way the hair dries in such pretty curls and ringlets, will appeal to any one who tries it.

The favorite way is to apply the silmerine with a clean tooth brush before retiring. The effect upon arising is quite surprising, the curls being such a natural appearance and the hair being so bright and lustrous. Particularly will this be appreciated by the habitual user of the despoiling waving iron—which, happily, can now be discarded. The liquid silmerine, which can of course be obtained from any drug store, is neither sticky nor greasy. A few ounces will keep the hair curly for many weeks.—Mirror of Fashion—Advertisement.

Factory Outlet Footwear at Such Exceptionally Low Prices That Will Crowd This Store All Day With Thrifty Shoe Bargain Seekers

1 Days Specials
Misses' \$1.25 Patent Coit and Gun Metal Button Shoes, up to size 2, at **98c**

1 Days Specials
Little Boys' Satin Calf Button and Blucher Shoes, at **98c**

1 Days Specials
Women's Comfort Juliets, plain toe or patent tips, at **98c**

Men's 75c House Slippers, tan and black, at **49c**

Growing Girls' \$2.00 Gun Metal Button Shoes, at **\$1.49**

Old Ladies' \$1.25 Comfort Lace Shoes, at **98c**

Men's Scout Shoes, black and tan, for **\$1.98**

Women's 75c Boudoir Slippers; all colors at **59c**

Women's Vici Kid Cushion Comfort Shoes, button or lace, \$2.50 value, at **\$1.98**

Boys' Gun Metal Button Shoes, sizes up to 6, at **\$1.39**

Men's Heavy Tan Work Shoes, \$2.50 value, at **\$1.98**

1 Days Specials
Women's \$1.75 Vici Kid Button Shoes, black cloth tops, at **\$1.24**

1 Days Specials
Misses' and Children's Vici Kid Button Shoes, \$1.25 values, at **98c**

1 Days Specials
Men's Tan and Black Romeo House Slippers, at **98c**

Growing Girls' Gun Metal Button Shoes, flat heels, \$1.50 value, at **\$1.24**



Initial Showing of Fall Novelty Footwear

Ladies' Military Lace Boots, Patent Colt and Gun Metal, black cloth tops **\$1.98**

Baby Doll Boots for Growing Girls; lace and button, Gun Metal and Patent Colt **\$1.98**

FACTORY OUTLET SHOE CO.

16 N. 4th St. Walter L. Stern Mgr.

The Spread of the "Wharton School Idea"

Most young men realize that this is the age of the trained man. They understand that success in medicine, law or engineering cannot be achieved without special training and study.

But to many young men, the necessity of special training for future business executives is not apparent. They do not realize why promotion to executive positions with great corporations, such as the Western Electric Company, is limited to college-trained men. They have not grasped the significance of the fact that many large corporations—such as the National City Bank of New York (the largest bank in the United States) or the Standard Oil Company—have established schools to give to their promising young men the special training essential to real success. The students in such schools are paid a salary while studying! These corporations are investing in the future.

The Wharton School of Finance and Commerce is providing the opportunity for evening study of commercial and financial subjects to the energetic young men of Harrisburg.

Is not the experience of our great corporations—whose names are synonymous with business acumen the world over—most significant to YOU?

Information, Registration and Consultation with members of the Faculty at Chamber of Commerce, Kunkle Bldg., every evening, except Saturday, 7 to 9, or with C. Harry Kahn, Chr. Rotary Club Educational Committee, Arcade Bldg., 2 to 3 p. m.

School Opens October Fourth