

Chalmers Six-40

\$1350 Seven Passenger



20% More Power

The Chalmers valve-in-head motor with overhead camshaft is as far in advance of the old types of motors as the self-starter is ahead of the starting crank.

It is generally recognized in the trade and among owners as the 20% more power motor.

THE Chalmers Six-40 is the new motor car at a lower price, equipped with this wonderful new type of motor which has made it necessary for the Chalmers Company to so tremendously increase its production for 1916.

The Season's Motor Sensation

On the hills and country roads where going is hard, this \$1350 car will do all for you that it did for A. E. Walden when he established a record at the recent Uniontown Hill Climb, driving a Chalmers Six-40, that was eight seconds better than the previous record for the class.

Within the limits of touring car service its wonderful valve-in-head overhead camshaft motor will give you all the efficiency and "trigger-quick" getaway that this type gave De Palma and Resta when they averaged 90, 98 and 102 miles an hour for 300 and 500 miles at Indianapolis and Chicago.

Comfortable as a Rocking Chair

The new Chalmers Six-40 is as comfortable as a big library rocking-chair.

The leather upholstered seats are deep and luxurious; the sides of the tonneau are built on the "armchair" principle. You ride in the car—not on it.

The leg-room is ample; the rear springs are 57 inches long—longer than any other car in this class—and the result is that the car glides over rough spots with an easy motion that makes motoring a pleasure under every condition.

Made in Chalmers Shops

Chalmers cars are made in Chalmers shops under the most exacting standards. They are quality cars throughout in style, beauty, comfort and performance.

See us to-day. We will give you a ride over the hills and country roads in this \$1350 car that will prove its 20% greater power.

New Service to Owners
Every Chalmers dealer gives to every buyer of a Chalmers car a Service Coupon Book, each coupon being redeemable for a definite amount of inspection service at any Chalmers dealer's anywhere.

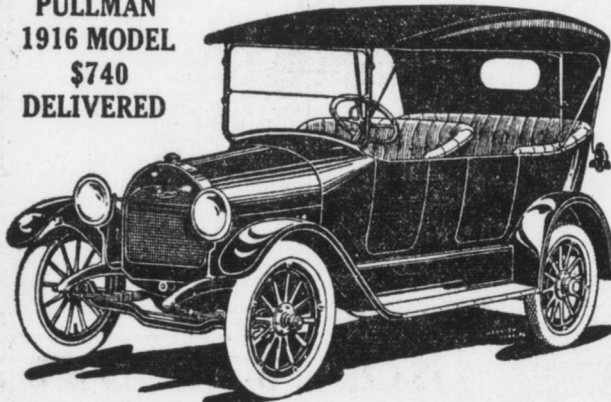
Chalmers Club and Clubman
Every Chalmers owner is entitled to a membership card in the Chalmers Club commending him to the courtesy of Chalmers representatives everywhere, and to receive "The Chalmers Clubman" a regular "with-out-charge" magazine.

Keystone Motor Car Company

1019-1025 MARKET STREET
Bell Phone 1839, United 3974
ASSOCIATE DEALERS—York Garage and Service Co., York, Pa.; George F. Snyder, Chambersburg, Pa.; Ideal Motor Car Co., Lebanon, Pa.; C. T. Romberger, Elizabethtown, Pa.

"Let your Next Car be a Chalmers"

**PULLMAN
1916 MODEL
\$740
DELIVERED**



The Palace Car of the Road

I have added to my line and am ready to give you immediate delivery on this New 1916 PULLMAN. It's nice and roomy with a 114-inch wheel base, makes easy riding.

COME IN AND TRY IT

IT'S A WONDER AT THE PRICE

Andrew Redmond

Third and Boyd Streets

(Bentz Landis Auto Co., Distributors)

1916 **EMPIRE** \$895

Model 33 touring car is an advanced car throughout. Many new features. Size, power, quality and equipment, considered separately or collectively, give the Empire Model 33 rank above all cars of its class. 112-inch wheel base. 35 horsepower motor. Full-floating bangle bearing rear axle. Five-bow one-man top. Remy electric starting, and lighting fully guaranteed for one year. Extra large, rounded up honeycomb radiator. Combination searchlights with small dim lights. Dropped frame with low center of gravity. Streamline, flush-body of extra roominess. Demonstration on request. Deliveries without delay.

The New Empire Six, \$1095

PENBROOK GARAGE

Bell 989J; 2539W H. A. FISHBURN, Manager

Try Telegraph Want Ads Try Telegraph Want Ads

Improved Batteries Do Wonders For Electric Cars

One of the most remarkable changes wrought in electric car building has been in the matter of batteries. It is often noted and commented upon that electric automobiles of to-day show greater speed and endurance than ever before. Another noticeable feature is the ability of electric cars to always run satisfactorily regardless of weather conditions.

These improvements are largely due to the advancement that has been made in storage batteries. It used to be that thirty miles was as far as an electric could travel on a single battery charge. By contrast the modern electric car can cover 85 miles or more—the equivalent of several days of usual service—on one charge of the batteries. Then, too, facilities have been improved by reason of conveniently located central charging stations which make it practical for any electric car owner to get quick service.

It used to be a common occurrence to see electric pleasure cars travel at an extremely slow pace because of radical changes in the weather, particularly on cold or snowy days. However, the type of battery compartments and trays in use to-day are so designed that sufficient protection is afforded against severe weather to insure the satisfactory performance of batteries in winter as well as summer.

Electric car batteries used to be considered somewhat of a mystery and the average owner was almost afraid of them. To-day they are well understood by owners because they have been simplified and thoroughly explained in common sense instruction books issued by both battery and car manufacturers.

Greater strength and longer life has naturally come with development in battery manufacture. In every detail, batteries now used in the quality electric cars are more efficient. They make greater speed possible, as well as added power in climbing hills, or negotiating heavy roads. There is no doubt that the radical changes made in electric car batteries have been largely instrumental in increasing the popularity of electric pleasure cars in this country. No hills are considered too steep for the electric to climb. To improved batteries is also due the greater economy with the modern electric car shows over the type of cars of a year or two ago and over other types of motor vehicles.

Modern Airboats Have Luxuries in Appointments

In line with the Aero Club of America's movement to develop aviation corps for the militia, Glen H. Curtiss, one of the pioneer aviators in this country, will exhibit the latest model Curtiss flying boat in New York in an effort to stimulate the interest of the general public among amateurs and to familiarize the general public with the possibilities and value of aircraft.

Through the courtesy of the Packard Motor Car Company of New York, the use of its large hall in the city of New York, Sixty-first street, have been granted for the exhibition, which will begin the latter part of this week, and continue three or four days. An experienced aviator will be in charge of the exhibit, to explain the construction of the flying boat, its uses and manner of operation. Invitations have been mailed to prominent New York sportsmen, who have shown an interest in flying and it is hoped some plan may be evolved that eventually will lead to the organization of amateur flyers into an available secondary reserve.

The flying boat to be shown is a duplicate of the Model "F" recently presented to the New York Naval Reserves by Mr. Curtiss in the month of August. Ensign Lee H. Harris, is now being trained in the Curtiss school at Buffalo. It is an improved type of machine in which Beckwith Havens made the 1,000-mile air and water trip from Chicago to Detroit, via the Great Lakes, in 1914. The New York Naval Reserves' flyer is now being completed at the Curtiss plant, and will be delivered in two weeks.

The airboat to be exhibited in the Packard show rooms is one of the most luxuriously finished models of this type yet produced, and is designed to carry two passengers in the cockpit. It is equipped with a 90-horsepower V-type motor, with a waterspeed capacity of 60 miles an hour and a cruising range of from 45 to 75 miles an hour; a wind-shield, self-starter, military searchlight, and navigation lights on the planes. The body is of solid mahogany, finished in brass, of single-step hydroplaning construction.

Following the exhibition in the Packard store, the machine will be sent to Sheepshead Bay for an exhibition during the automobile races, and thence to Long Beach, where Mr. Curtiss will establish a school for flying.

LOOK FOR THIS SIGN



You'll find it over our door. It means that here you get expert service and attention for your Starting and Lighting Battery. We're distributors for

The "Exide" Battery that is assuring the dependable starting of nearly 300,000 cars. Get in touch with us. Let us explain our service. It's prompt, reliable and inexpensive.

Excelsior Auto Co.
11th & Mulberry Sts.
H. L. MYLERS, Mgr.



ENSMINGER MOTOR CO.
THIRD AND CUMBERLAND STS.
Distributors.



Ensminger Motor Co.
Third & Cumberland Sts.
DISTRIBUTORS

Mileage of Tires and What the Average Shows

The advance which has been made in automobile tire building can well be shown by a comparison of the tire of a few years ago with that of to-day," said L. C. Rockwell, manager, Automobile Tire Department, the Goodyear Tire and Rubber Company.

"Five years ago motorists were satisfied if their tires attained a mileage of 3,500. To-day no car owner would consider such a performance satisfactory. Six, eight and ten thousand mile tires are now common. Many have even run much longer distances.

"There are many reasons for this. The big tire companies of the country have produced a large measure of educating the motorists to care for their cars properly. This has had much to do with the more satisfactory results secured from present day tires. But there is no doubt that the tire manufacturers are making better tires now than ever before. Tire engineers understand the requirements better. The relation of load to tire size and inflation is better understood, and cars are now coming out with more nearly adequate tire equipment than in the past.

"Formerly many heavy cars were running on tires which were too small in cross section to hold up the load imposed on them. Naturally these tires broke down long before their time, creating much dissatisfaction among their owners. Many of these were undoubtedly good tires and would have given satisfactory service if the proper relation of load to tire size had been observed.

"Goodyear has been the leader all the way in tire perfection. Our engineering department strives for improvements to Goodyear tires and have used annually \$100,000 in experimentation. Added features to tires will increase out tire cost \$1,835,000 this year. What we are adding in extra rubber, the more satisfactory results we will get. Our emphasis in the tire field to-day is largely due to our policy of giving more than before. The industry has been spared to give the motorists of the country the very best tires that money and skill can put together."

Motor Car Lineage Must Determine Its Prestige

"The revelations in motordom this year have unquestionably been more startling and significant than in any previous season. Motorists have seen the advent of eights and twelves, of radical changes in body design, of thousand refinements and improvements in the motor car yesterday. To-day the automobile business is more than ever before a survival of the fittest," said George M. Dickson, general manager of the National Motor Vehicle Company, builders of National Highway Six and Twelve cylinder cars. "For this reason it is exceedingly gratifying to me to realize that a car which has been an outstanding performer for fifteen years in the realm of automobiles, has this year in no wise surrendered its leadership, but come to the fore in a more superb manner than ever before."

"After all," continued Dickson, "an automobile is not made but bred from a long line of distinguished ancestors; that is a motor car of the type of the National, and an automobile shows its breeding. It cannot be any better than the factory behind it. And certainly this 'Highway' product of the sixteenth year of its existence, bears out my theory in every purr of its motor and graceful line of its body. It has a certain smartness which is a matter of lineage."

"It is the car of distinction, the mark of the correct thing in motor cars, just as a Lucille gown is the last word in style or a Tiffany silver service the epitome of the silversmith's art. Every new style of body that has been created by the National in recent years has proved to be in vogue a long time and all have been very widely copied, yet at no time has there been any straining for effect on the part of the National's makers or obvious attempt to startle the motoring public."

"The changes the National has made in its design have been those suggested by the assured judgment of an acknowledged leader and before they were adopted by the National's designers, the National has again come to the fore with some new perfection in line or beauty of exterior which has made it a matter of pride for the motorist you would be proud to have in front of your door or which would give you a peculiar satisfaction in claiming as your own at your country club or on the boulevard when it assumes its natural leadership. In this year's Highway models, the National Twelve and the National Six, there is found this same typical preparedness and advance both in mechanical construction and beauty of finish."

Chalmers Official Organ Has Valuable Information

The Chalmers Clubman, published by the Chalmers Motor Company for Chalmers owners, sends a magazine in house publications. The last issue of this attractive little magazine is filled with interesting and valuable information for motorists.

The magazine is styled the "official organ of the Chalmers Club," and every member of this club receives the Clubman free of charge every month. Every owner of a Chalmers car is eligible to membership in the Chalmers Club and with the appearance of the August Clubman, over ten thousand applications had been filed and membership cards granted.

Interesting tours are featured from month to month, giving detailed road information. A decided editorial stand has been taken on the side of good roads. In the last issue, an article is devoted to outlining the route and plans of the Dixie Highway, the great Chicago-Miami, Florida roadway now under construction.

Under the heading "Little Pilgrimages to the Shrine of Chalmers Quality," a series of stories on manufacture is being conducted, divulging some of the little known processes employed in the manufacture of a high grade motor car.

One page is devoted to the subject of women driving. This article gives some interesting side lights on the influence of the feminine contingent upon the purchase of the family's motor car.

The spirit back of the Chalmers Clubman is summed up in the words of its sponsor, Hugh Chalmers, who has arisen a greeting "Hello Chalmers!" that is exchanged by many Chalmers drivers who pass on the open road.

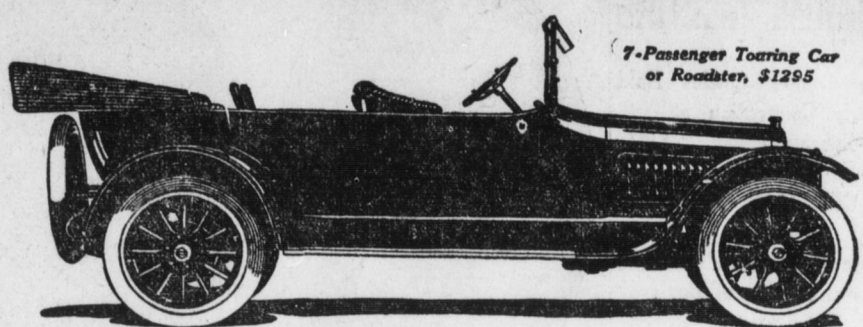
The whole aim of the magazine is to foster good will between Chalmers owners and the Chalmers organization. As a result of this movement has arisen a greeting "Hello Chalmers!" that is exchanged by many Chalmers drivers who pass on the open road.

Willard Uses Extra Hard Oak For Boxes

An interesting fact in connection with the manufacture of Willard Storage Batteries is that the oak which they use for boxes is so hard that furniture makers are unwilling to use it for any except special purposes, inasmuch as it is difficult to work and dulls the edges of ordinary tools.

The Willard Company searched all over this country before they discovered this material, which they believe is superior to any other for the purpose. In addition to using very hard wood, they groove the corners of their boxes and lock them together with hard maple dowels securing the bottoms with lead-coated, acid-proof screws. They say that as a result of these precautions many months are added to the battery's life in service. Ordinary cheap battery boxes are quickly jolted apart by the bumps which they get over rough roads and car tracks.

What It Means to You That We Have "Stuck to One Model"



7-Passenger Touring Car or Roadster, \$1295

CHANDLER SIX \$1295

STILL they come. "New Model," "New Motor," "New Type," new everything. All in the hopes of somehow getting into line with the requirements of the motoring public.

Meanwhile Chandler goes right along with one model — one right model — that the public continues to demand in quantities beyond the factory capacity.

Chandler is selling ten thousand cars this year, because Chandler was right in the first place when it pioneered the light-six field. And because being right, the Chandler Company has continued to devote all its mechanical genius, all its business ability, to this one model — improving it here and

there, from time to time, beautifying its body lines, and driving its price down and down just as far as the Company's lower-car-profit policy would permit.

Meanwhile others have been marketing two models, three models, and new models every six months; all of which must of necessity mean decreased factory efficiency, costly experimentation and uncertain service to purchasers.

So what is the result of the Chandler one-model policy so far as you are concerned? The best value, known value, obtainable at a price so low! Thousands of Chandler owners will back up this assertion. Your own investigation will prove it, too.

No Other Car Selling for Less Than \$2000 Offers You All These High-Class Features.

Chandler Features Marvelous Chandler Motor, made in the Chandler factory, Bosch Magneto, Gray & Davis Electric Starting and Lighting System, Rayfield Double-Jet Carburetor, genuine Mayo Mercedes Type Radiator, cast aluminum motor base, three silent chains for driving motor shafts, imported annular ball bearings, silent worm-belt rear axle, genuine hand-buffed leather upholstery, Stewart vacuum gasoline feed, Goldie patent one-man top covered with genuine Nevada, jolly curtains, Warner Magneto Speedometer, Firestone Demountable rims, complete general equipment.

The Chandler Removable Winter Top, \$200

Gives You Two Cars In One

Come Now to See the Chandler

Andrew Redmond Third and Boyd Streets

Bell phone 2133 — United phone 418W

CHANDLER MOTOR CAR COMPANY, Manufacturers, CLEVELAND, OHIO

Winter Tops Are Good Limousine Substitutes

The winter top which takes the place of the regular touring top and can be mounted on a car in a very short time converts the open touring car into a snug limousine at small expense. For winter use such tops are coming to be considered absolute necessities, since they give all the rough weather protection of the limousine at a small added cost over the fixed expense of operating a touring car.

The Olds Motor Works is introducing a cold weather top, so called, although it is, in fact, a top well suited to use the year round, which is not only a good substitute for the conventional type limousine in winter, but is so constructed that in the summer touring season the side sills and windows can be removed, leaving the sides entirely open. The standard windshield remains in place and serves as a rigid front support for the top. In order to keep the top section of the windshield free from snow a glass shield is mounted on the front of the top above the windshield in such a way that it prevents the windshield from becoming coated with snow.

The Olds Motor Works sales manager, states that this top has most of the accepted earmarks of a limousine, the interior being finished off in a fine

cloth with a dome line in the center and the exterior in a weatherproof and practically wearproof material. The luxuries of the limousine have been preserved in this top to such an extent that it probably would be taken for the conventional limousine by most people. Combining as it does the salient features of the limousine with the light weight of a standard touring car, the winter top, according to Mr. Hall's statement, is likely to take its place with such necessities as demountable rims or quickly placed rain curtains.

FIVE HURT IN RACE RIOT

Special to The Telegraph

Mahanoy City, Pa., Sept. 18.—In a race riot at Gilberton yesterday, four men were stabbed, two seriously, and William Bertulick, aged 28, one of the ringleaders, was shot by Policeman Thomas Bonner. Bertulick is dying at the State Hospital at Fountain Springs with a bullet in his brain. John Wikel and William Pritchard were stabbed in the chest and George Smith and Robert Novak received scalp wounds.

The New **PAIGE** 6-36 \$1095

The latest addition to a distinguished line of cars. A five-passenger "roomy" car—a luxurious car—a "smart" car—an economical car. A car that lines up to the Paige "Standard of Value and Quality." Low first cost. Low "Up-keep" expense. Weight 2,600 pounds, with same body design and cantilever spring as the larger model.

RIVERSIDE AUTO CO.

BELL PHONE 3731R REAR 1417 NORTH FRONT ST. GEORGE H. BENTLEY, Proprietor



Announces the Arrival of the

Willys-Knight (Coupe Body) Price \$1540

On Exhibition at Our New Showroom MONDAY, SEPTEMBER 20TH

Overland Harrisburg Co.

Showroom--212 North Second Street

Service Station--127-9 Cranberry St.

Bell Phone 3883