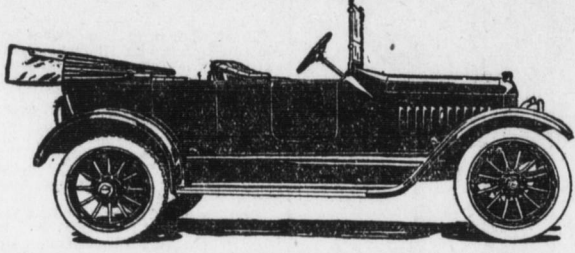


The New Model Double T
\$795 **GRANT** \$795
F. O. B. Factory **SIX** F. O. B. Factory

The Palace Car of the Road
Open For Immediate Delivery

Come in and try it. It's a wonder for the price. Smooth running and easy riding. Beautiful stream line body; one-man top. As fine a car as is on the market for the price. Let us prove what we say by a demonstration.

GARAGE, 131 South Third Street
HARRISBURG, PA.



GOOD ROADS ARE IN DEMAND EVERYWHERE

Congress Will Be Asked to Cooperate in Nation-Wide Improvement Work

"Congress will have the good roads question to answer at its forthcoming session, and the accumulating demand from all sections of the country makes clear that the issue must be met," asserts President John A. Wilson of the American Automobile Association, who is enroute to the Pacific Coast to preside on motor car day at the American Road Congress.

"With over two million automobiles in use, the motorists now make up an army of road users entitled to equal consideration with all other citizens," says Mr. Wilson, "though some of us can remember an earlier period when we were considered a special class, subject to all kinds of hampering legislation and considered chiefly from a revenue producing standpoint."

"But we have finally obtained nearly all those rights which belong to the average citizen, and there is one thing in which we take a great deal of pride and satisfaction. In encouraging people to travel from town to town and from State to State, we have accelerated accordingly the national viewpoint. Nevertheless, I must confess to a belief that comprehensive highway improvement has only begun, for it is now receiving deserved attention from a growing number of men who have most to do with the affairs of the nation."

Speaker Champ Clark of the House of Representatives in a recent "home-State" speech gave a characteristic talk in which he said: "First and last tens of thousands of dollars' worth of wagons and buggies have been broken up and destroyed by reason of the bad roads in Missouri, and hundreds of thousands of dollars' worth of horses, mules, and oxen have been wasted in the same manner—perhaps the amount would run into the millions."

"I know this is not so lofty a theme as to discuss international questions of great pith and moment, but the problem of improving our roads is practical and can be solved. What's more, it ought to be solved. It is of immediate and pressing importance. Good roads mean increased population—increased wealth—increased in church and school attendance—increased in social affairs—in short, increase in the joy of living."

Former Secretary of State William Jennings Bryan, in an argument against any extensive military defense expenditure set forth that \$5,000,000 in eleven years "would gridiron the United States with hard roads twelve miles apart, so that no citizen would live more than six miles from a good road which would enable him to go everywhere."

Mr. Bryan also said in an interview at Omaha recently that it is only a question of time when the Federal Government will lend its assistance in the building of an inter-State road.

"The significant feature of Mr. Bryan's words is his reference to inter-state roads," comments Chairman George C. Diehl of the A. A. A. Good Roads Board. "There can be no other than the conception of a national system which will correlate and co-ordinate the systems of State highways, just as the State systems form the framework for the county and township systems of highways. The A. A. A. believes this an ultimate development, but hardly possible in the beginning. An inter-state system would be tangible and impressive and would tend to unify in our present somewhat haphazard systems of highways. Mr. Bryan's utterance is an encouraging indication of the trend of thought among the men who shape our legislative policies."

"Not long ago the chairman of the State Highway Commission of Maine, referring to Federal co-operation in good roads, asserted that the first expenditure in a State like Maine should be for connected sea-coast roads which would permit of a quick mobilizing of troops at any threatened point of attack. A similar argument had been previously put forth in regard to the Pacific Coast and Alaska borders. The great value of highways and automobiles in the European conflict has been completely demonstrated and these two factors are certain to figure in national legislation relating to military preparedness."

Overland Shipments Are Increasing Rapidly

Since the beginning of the calendar year the shipments of the Willys-Overland Company have shattered practically every existing record previously established by manufacturers of medium of high priced cars. The production facilities of the big Toledo concern have been steadily increased until now the shipments of a single day amount to more than the yearly output of Overland cars eight years ago.

Less than two months ago the average daily shipments reached the 400 mark. August 26 502 cars were shipped. The average now hovers around the 500 point. With four months still remaining the present rate of increase in shipments will more than equal the prediction made by John N. Willys, president of the Overland company, in January, to the effect that the Overland factory would be shipping 600 cars a day before the close of the year.

In referring to the tremendous demand for Overland cars Mr. Willys points out the continually growing foreign business of his company.

"Our export shipments between January 1 and August 20 of this year amounted to 4,006 cars," declared Mr. Willys. "This is an increase of more than 217 per cent. over the foreign shipments made during the corresponding period of time a year ago, when 1,846 cars were consigned to foreign countries."

"While our export business for the current year has shown a marked increase over previous years, the remarkable part of our success abroad is due largely to the fact that Overland cars meet the requirements of automobile buyers on the other side of the Atlantic as well as those in America, and is not the result of filling war orders from any of the foreign governments."

"A number of American car manufacturers have boosted their export sales by taking on large contracts placed by agencies of the various nations at war directly with the factory. But the demand for the Overland has been entirely from legitimate dealers. Some Overland cars were commandeered at the beginning of the war and undoubtedly others are doing service in the different armies, but any such have found their way to the front only after going through the hands of Overland dealers."

"Moreover, the demand for Overland cars abroad is not confined to Europe. Our sales in South Africa and the Far East have been even greater than we anticipated. When the buyers in those countries found they could not obtain cars from the European manufacturers who had formerly supplied a large proportion of the demand they naturally turned to America. The result has been that more American-made cars have been shipped into foreign territory than ever before."

Six
Model 83

\$1145
f.o.b. Toledo

Just "Six" Facts—

To you who are confused with and weary of long drawn out aside-from-the-point arguments, we present these Six important basic facts:

- The Overland Six has a wheelbase of one hundred and twenty-five inches.
- Many a Six—costing more—has a shorter wheelbase.
- The Overland motor develops full forty-five horsepower.
- Many a Six—costing more—has considerably less power; considerably less speed.
- The Overland is a roomy Six—seating seven adults with ease.
- Many a Six—costing more—has a smaller tonneau; hence less comfort.
- The Overland Six has 35" x 4 1/2" tires with non-skids on the rear.
- Many a Six—costing more—has smaller tires.
- The Overland Six has high tension magneto ignition.
- Many a Six—costing more—has not.
- All Overland electric control buttons are on the steering column—within reach.
- On other Sixes, that cost more, they are not as conveniently located.
- These few major items alone should, we believe, convince any intelligent buyer of the downright wisdom and out-and-out economy of selecting an Overland Six.

The Overland-Harrisburg Company, Salesroom 127-9 Cranberry Ave. Bell Phone 3883
Distributors For Central Penna., HARRISBURG, PA.

The Willys-Overland Company, Toledo, Ohio
Also manufacturers of Willys-Knight Automobiles "Made in U. S. A."

Model 83
Four cylinder 5 Passenger Touring Car - - \$750
Roadster - - - - - 725
f.o.b. Toledo

Record Production by Chalmers Motor Car Co.

"Monday, August 23, closed the biggest sales day in the biggest sales month in the history of the Chalmers Motor Company," was the announcement of C. A. Pfeffer, vice-president and assistant general manager. During this week alone two train loads of Chalmers cars were shipped east to distributors and dealers in the metropolitan districts to apply on orders which have been piling up faster than night and day production could take care of them.

This record is all the more remarkable following as it does on the heels of record breaking sales in July, during which month more Chalmers cars were sold than in any other preceding July.

Mr. Pfeffer attributes the bulk of this business to the phenomenal success of the Valve-in-head overhead camshaft motor which is installed in the seven-passenger Chalmers "Six."

40" selling for \$1,350 and announcement of the popular Light Six, which formerly sold at \$1,225 to sell at \$1,550.

"While we are quoting Chalmers cars at prices lower than ever before placed on Chalmers quality," stated Mr. Pfeffer, "we have been enabled to make this reduction by building on a quantity production schedule and have not sacrificed quality in any detail."

"We were satisfied that there was a great demand for a high class seven-passenger model in the medium priced field and the sales which have resulted since our announcement have more than justified this belief."

"One of the most attractive features of the car is its luxurious riding qualities. The large roomy body was designed to fit the body. One rides in the car—not on it. The twenty-two inch rear doors are conveniently large. One of the special features of this Chalmers model is the disappearing Pullman auxiliary rear seats which fold in flush with the front seat wall when not in use. This leaves the tonneau absolutely clear when in use as a five-passenger car."

DENTAL SOCIETY MEETS
The Harrisburg Dental Society met last night to resume its regular sessions after the summer vacation period. The meeting was held in the office of Dr. William L. Keller. The next meeting will be held on the first Friday of October.

MANY AT CONCERT
Numbers requested by patrons were played last evening by the Municipal Band at a concert in Reservoir Park. Frank Blumenstein directed the band. Several selections which have been favorites this season were included in the program.

FRANKLIN
Ensminger Motor Co.
Third & Cumberland Sts.
DISTRIBUTORS

Auto Tops, Curtains, Cushions AND Painting

We have a force of expert carriage trimmers, as good as there are in the State. Celluloid transparencies put on the curtains while you wait.

Fine painting of automobiles and carriages a specialty. Workmanship and quality of material guaranteed satisfactory. Bell phone for estimate or appointment.

C. A. FAIR
Carriage and Wagon Works
1131 MULBERRY STREET

Cadillac
Standard of the World

-----After All

Why not just take a ride in the several cars included on your list, before going any further into the matter? We know a ride in the new Eight Cylinder Cadillac will give you a base from which you can work.

Our demonstrating car at your service.

Crispen Motor Car Co.
413-417 S. Cameron St.

The New **PAIGE** 6-36 \$1095

The latest addition to a distinguished line of cars. A five-passenger "roomy" car—a luxurious car—a "smart" car—an economical car. A car that lines up to the Paige "Standard of Value and Quality." Low first cost. Low "Up-keep" expense. Weight 2,600 pounds, with same body design and cantilever spring as the larger model.

6-40 Seven-passenger, \$1295. Prices f. o. b. Detroit.

RIVERSIDE AUTO CO.
BELL PHONE 3731R
GEORGE R. BENTLEY, Proprietor
REAR 1417 NORTH FRONT ST.

King Proves Flexibility With High Gear Sealed

A King has just finished one of the most severe high gear tests to which an eight cylinder motor car has ever been subjected, completing successfully a nine hundred mile drive down the San Joaquin and Sacramento valleys with the high gear sealed and the shifting lever removed.

In charge of A. J. Smith of the Reliance Automobile Company, northern California distributors for the eight cylinder King, and C. W. Hobson of the King factory, this latest efficiency demonstration for a motor car proved the contention of the eight cylinder manufacturers for flexibility of eight cylinder motors.

The gear box had been sealed, the high gear being the only one on which the car could operate. The King went through ruts, sand, dirt to the axles, crossed streams and over two vicious mountain passes. Over fifty Northern California towns were passed through. The car finished in perfect condition.

In view of the rough spots, the King had to traverse, the passing through heavy traffic prevalent in San Francisco due to the exposition, taking the difficult climbs right in this city and out in the valleys the performance has never been equaled by a motor car. Although the trip originally planned was for 800 miles, owing to repairs being made to road and detours, the speedometer reading was over 900 miles.

Hupmobile
Car of the American Family
ENSMINGER MOTOR CO.
THIRD AND CUMBERLAND STS. Distributors.

1916 EMPIRE \$895

Model 83 touring car is an advanced car throughout. Many new features. Size, power, quality and equipment considered separately or collectively, give the Empire Model 83 rank above all cars of its class. 112-inch wheel base. 35 horsepower motor. Full-floating single bearing rear axle. Five-bow one-man top. Remy electric starting and lighting. Fully guaranteed for one year. Extra large, rounded top honeycomb radiator. Combination searchlights with small dim lights. Dropped frame with low center of gravity. Streamline, flushside body of extra roominess. Demonstration on request. Deliveries without delay.

The New Empire Six, \$1095

PENBROOK GARAGE
Bell 989J; 2539W H. A. FISHBURN, Manager

PULLMAN 1916 MODEL \$740 DELIVERED

The Palace Car of the Road

I have added to my line and am ready to give you immediate delivery on this New 1916 PULLMAN. It's nice and roomy with a 114-inch wheel base, makes easy riding.

COME IN AND TRY IT
IT'S A WONDER AT THE PRICE

Andrew Redmond
Third and Boyd Streets
(Bentz Landis Auto Co., Distributors)

Try Telegraph Want Ads