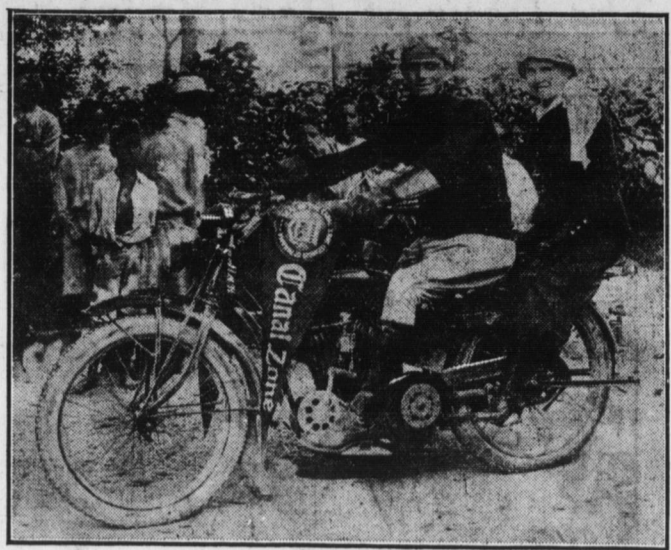


MOTORCYCLING IN THE CANAL ZONE



W.M. Taul of Birmingham, Ala., who is on his vacation from the Electrical Division of the Panama Canal Commission at Balboa, Canal Zone and who has been an Indian rider on the Isthmus for nearly a year, says that conditions are in some respects favorable and in others not so hard to enjoy the sport of motorcycling.

A Wonderful Value Chalmers Six-48 Seven Passenger Touring Car Formerly \$1925—NOW \$1550

There is no speculation in the purchase of this car. It is exactly the same car in every particular that has already established for thousands of owners new records for economy of upkeep and general satisfaction.

In beauty of line and ease of riding, it surpasses all cars within \$500 of its price.

We are giving you the advantage of the saving made possible by quadrupled production. That explains the reduction in price.

It will be good judgment to call on us and investigate this car before deciding to purchase any car anywhere near its price.

KEYSTONE MOTOR CAR CO. 1019-21-23-25 Market St., Harrisburg, Pa. BOTH PHONES CHALMERS MOTOR COMPANY, DETROIT, U. S. A.

Safety Determined to a Great Extent by Tires

Streets designed for the village days of the one-horse chaise make the traffic problem of the modern metropolis one worthy of the sturdiest attention of prominent automobile and accessory manufacturers.

race, and the towns along the route covered by the motor cars permit the racers to pass through at top speed. Work was suspended in most places along the route where throngs turned out to watch the contest.

Car Goes Along Street With No One Aboard

A six-cylinder, seven-passenger touring car without a soul aboard, but calmly ambuling up one of the principal thoroughfares of New Haven, Connecticut, threw the inhabitants of the celebrated home of Yale University into a state of considerable excitement a few weeks ago.

Cadillac Eight Again Shatters Records

The Cadillac Eight has shattered another record—this time racing with a Union Pacific Special train from Denver to Cheyenne, and arriving at the station two minutes before the train.

longer any question in the minds of the New Haven citizens that the Paige is flexible and will throttle down to a walk on high. Even the chief of police admits it.

Proper Weight and Right Springs Essential

In the early days of the automobile industry, heavy weight was deemed necessary to hold a car to the road, but experience and experiment have done much to explode this idea and to create the present tendency towards light weight.

The Paige proceeded thus for several blocks, passing automobiles and trolley cars running in the opposite direction. While the "phantom car" shattered the nerves of a few, the demonstration was certainly completed and entirely successful. There is no

examples of what spring suspension means to holding the road. No engineer would run a locomotive around curves at the speeds commonly made, were it not for springs that permit side sway.

Climbs Mt. Tamalpais Over Railroad Ties

Driven by Walter G. Collins, of Los Angeles, a Dodge Brothers' touring car recently established a new record on Mt. Tamalpais, of California's highest peaks, by climbing eight and one-half miles over the railroad ties to the summit.

Gigantic Deals Show Remarkable Increase

Mitchell-Lewis Motor Company at Racine contracted to deliver \$1,200,000 worth of autos to one territory.

Republic Factory Will Have Increased Capacity

"The truck business is booming," says General Manager F. W. Ruggles, of the Republic Motor Truck Company at Alma, Michigan.

Paige Capital Stock Increased to \$1,000,000

Evidence of the prosperity of the automobile industry in general and of the Paige-Detroit Motor Car Company in particular is disclosed in the news that the Paige directors have made arrangements for the increase of their capital stock August second from \$250,000 to \$1,000,000.

Republic Factory Will Have Increased Capacity

The Republic organization, now in its third year, has progressed rapidly since 1912, and the increased business of the past year has necessitated new factory additions of which some have just been completed and others are now under way.

Cadillac New Model Meets With Approval

Two of the new Cadillac Eight models were received this week by the Crispin Motor Car Company. The changes affect principally the accessibility of the engine and appearance of the car.

The New 1916 Eight Cylinder Cadillac IS HERE

This New Perfected Eight Cylinder Cadillac stands to-day without a peer.

Every attribute you would want in an automobile is found in this new car in the highest degree.

Demonstrating car at your service and two carloads per week insure prompt delivery.

Crispen Motor Car Co. 413-417 S. Cameron Street

Bringing Up Father



By McManus