

A Page of Timely News--Told By Bowman's

Bowman's

CALL 1991--ANY PHONE

FOUNDED 1871

SATURDAY HOURS: 9 A. M. TO 9 P. M.

Three Hosiery Leaders (Women)



Kitty Bess Thread Silk Hose—double soles, lisle garter tops; black and colors. Pair **\$1.00**

Thread Silk Boots—wide garter tops; double soles; high spliced heels; regular and extra sizes. Pair... **50¢**

Fibre Silk Hose—double soles, high spliced heels; black and white. Pair **25¢**

BOWMAN'S—Main Floor.

Three Golden Opportunities to Save Money On Seasonable Footwear

At **\$1.00**

Women's high and low shoes, in black, brown and white leathers; welts and turns, \$2.50 to \$3.50 values.

At **\$1.29**

Women's smart lace summer shoes in fawn and dark gray; welted soles; patent colt and gun metal trimmed; leather Louis Cuban heels; \$3.50 values.

Saturday Morning Special

On Sale from 9 until 12 O'clock

267 pairs Women's seasonable Low Shoes, Pumps and Colonials; welts and turns. All sizes. \$2.50 and \$3.00 values. Pair **79¢**

None sent C. O. D.; on approval; or exchanged.

BOWMAN'S—Third Floor.

A New Crepe Has Been Imported

A beautiful white fabric with large plaid effect; strong of texture; 42 inches wide and special at **\$1.00**. Also at this price are dainty hair-line silk voiles; 40 inches wide.

BOWMAN'S—Main Floor

Little Dainties

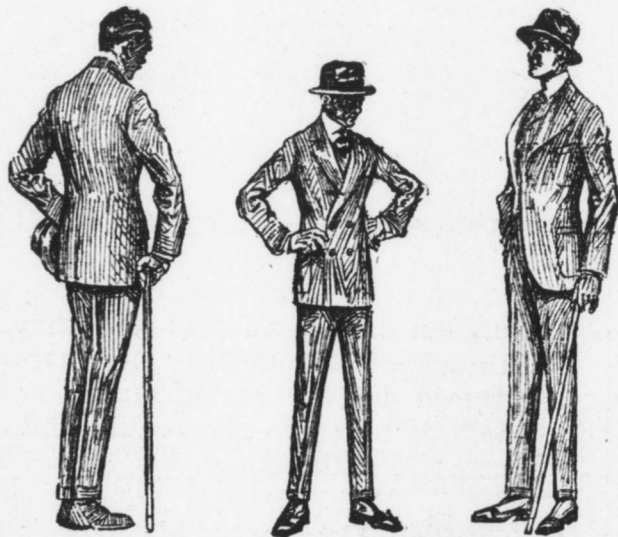
—Awning stripe Windsor Ties; beautiful shades. **25¢**

—The new Quaker lace collars **25¢ and 50¢**

—Popular Ribbons are moires, satins and fancies, 5 and 6 inches wide; **25¢ yard**

—Ombre String Ties are **10¢** now instead of 25¢.

BOWMAN'S—Main Floor



If All Men Could Appreciate What "Economy Days" Mean to Their Wardrobe and Pocket-book.

Building "air castles" of several dollars saved and a well-appearing, well-wearing suit of clothes that any man could be proud of, is unnecessary; for such is a reality here.

The suits are from regular Bowman stock--you've seen them time and again in the window--they're in now and the smart styles and patterns speak for themselves.

New prices--(note the reductions):

\$13.50, \$10.00, \$5.00

Reduced from highest priced suits in stock.
Reduced from \$13.50 and \$15.00.
Reduced from \$7.90, \$9.90 and \$12.50.

BOWMAN'S—Third Floor.

IN A WORD

Bright and manly stripes in shirting silk for men who desire smart dress; yard wide; \$1.00 yard--(main).

Out in the back yard, a lawn swing will provide summer evenings of coolness and quiet; \$4.75--(third).

Women are taking kindly to white Iceland fox fur neck-pieces. There's appreciable merit in being distinctive; \$1.50--(neckwear section).

Many a racket has been raised in playing tennis; we're selling quite a number for this purpose; \$1.00 up --(third).

An excellent view of building operations can be seen from fourth and fifth floors --(providing you don't mind "thrillers").

Nothing prettier for the porch than a mission fern basket that hangs from the ceiling --(Pergola; fifth).

Swat the fly! Last but not least --get a swatter free in the rear of main floor.

In Every Sanitary Kitchen You'll Find Linoleum

New Process Linoleum—not affected by heat or moisture; new patterns; perfect goods. The best quality of printed linoleum made. Sq. yd. **33¢**

Congoleum Rugs—made of new process linoleum; for use in bathrooms, kitchens, dining rooms and porch. 6x12 ft., at **\$4.15**; 6x9 ft., at **\$3.15**; 4.6x6 ft., at **\$1.45**; 3x6 ft., at **98¢**; 3x3 ft., **49¢**

Velvet Rugs—new patterns and colorings; size 18x36; regularly \$1.00, at... **73¢**

Royal Wilton Rugs—size 36x63; regularly \$7.00, at **\$4.50**

Bigelow Electra Axminster Rugs—heavy quality; regularly \$4.00, at... **\$2.69**

Grass Rugs—size 9x12, with Walls of Troy border; regularly \$7.95, at... **\$4.98**

Tapestry Brussels Rugs—size 9x12; regularly \$16.00, **\$11.50**

BOWMAN'S—Fourth Floor



Women May Depend Upon the Bowman Outer-Apparel Department For Every Summer Need

You may choose from our large assortments in full assurance that the styles are right and qualities dependable.

You will always find something new—something interesting whenever you come.

Voile and Organdie Dresses will be found among bright summer frocks, including bolero effects; graduated tucks, embroidery flouncings, tier skirts; loose fitting blouse effects and others. Sashes of delicate shades. From **\$5.98** anywhere up to **\$25**

Linen Dresses in brown, blue, pink and white; also combination white and colored effects. Priced at **\$5.98, \$10.98 and \$13.50.**

Golfine and Chinchilla Coats, in the popular belted models and plain with large patch pockets, **\$6.50, \$9.98 and \$12.50.**

BOWMAN'S—Second Floor

Light Weight Skirts, in close range, broken stripe or small plaids; belted models with large pockets, at **\$5.98**. Also white serges with pleated and yoke effects.

Prettiest of White Waists, embroidered or tucked; lace being very prominent. Choice collars. Special, at... **\$1.10**

Jap Silk Blouses, plain with large flat collars and neat pockets. Some have polka dot ties. Priced at **\$1.98**

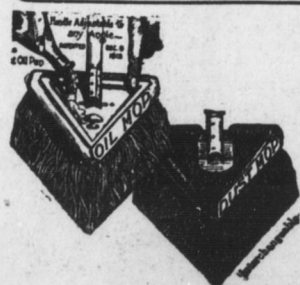
Lingerie Waists—about twelve styles, in smart effects, including embroidered styles with lace trimming and lacy combinations. Priced at **\$1.98**

For Saturday Only

40-Inch Silk Crepe de Chine, at 95c Yard

Good quality, perfectly-woven \$1.25 grade. Shades that are desired mostly; white, pink, flesh, Oregon green, navy, army blue; also black.

BOWMAN'S—Main Floor.

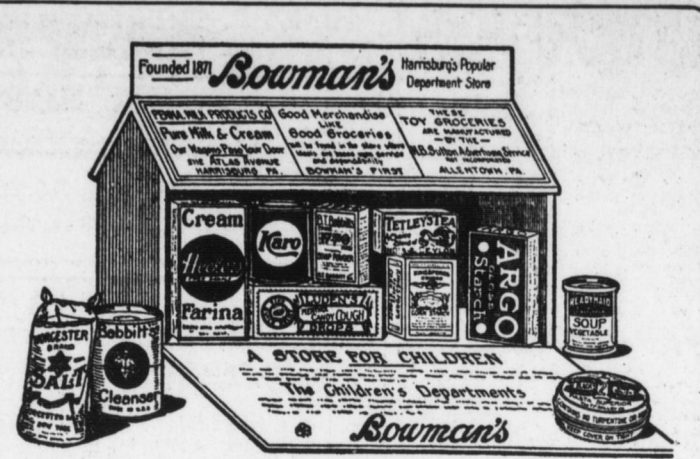


O-So-Ezy Mop

Polish and Dust Mop interchangeable on same handle. The only self-feeding mop. Triangular shaped; adjustable handle reaches the corners and under furniture. Ask for the mop in the yellow triangular package. 2 mops in one. Complete, **\$1.50**

O-So-Ezy Cedar Oil Polish, **25¢, 50¢ and 98¢**

BOWMAN'S Basement



Tomorrow, 500 Toy Grocery Stores at 15c Each Will Pass Out in a Hurry

Children, and parents, as well, seemed to wake up to the fun these toy stores afford all at once.

You can readily see that on a busy day like tomorrow, 500 can't last very long, and to make sure that one is received, many will be here on the stroke of nine.

Cut out coupon below and present with 15¢.

Store is illustrated showing what it contains. (See window also.)

Only one to a customer; no deliveries; no phone orders; sold to children only when accompanied by parents.

We Read Your Toy Grocery Ad. in Friday's Telegraph

Parents' Name

Child's Name

Address

Clip, sign and bring it with you.

Demonstrating Our \$1.75 Wavy Hair Transformations

Tomorrow our hair dressing expert will show you how to add greatly to your appearance with a Sophia Transformation. Even though your hair may be thin or scanty it can be arranged in a becoming style.

If you have saved your hair combings, bring them tomorrow and we will make a transformation or a switch for **\$1.25**

BOWMAN'S—Second Floor

Men's Hose: Well Appearing and Serviceable

Silk Lisle, with double soles and high spliced heels; in white, black and Palm Beach. Pair **12½¢**

Monito Hose, in black and colors; double soles. Silk lisle, **25¢**. Thread Silk, **50¢**

Thread Silk, in navy, white and black, with silk clocks. Pair **50¢**

BOWMAN'S—Main Floor

\$1.00 Black Leather Handbags, 59c

144 in the lot. All leather lined, and fitted with coin purse, mirror, powder box and pin box. Your choice of Tango handle or continuous strap. Fasten securely. Only a bit of fortune allows them to be sold at **59¢**; instead of \$1.00.

BOWMAN'S—Main Floor.

Betsy Brown Play Dresses

Pink and blue chambray and white linene; flat collar and belt in contrasting color; laced at neck. Sizes 2 to 6. Price is **59¢**

BOWMAN'S—Second Floor

Saturday Wash Goods Specials

\$1.00 worth, or 4 yards 40-inch 25c Seeded Voile, in set figures and floral designs; full pieces at **50¢**

75¢ worth, or 5 yards 15c 32-inch Crepe Plisse, in set figures and rosebuds, at **39¢**

75¢ worth, or 5 yards 15c 32-inch Juvenile Cloth, in stripes and checks, at **45¢**

40-inch Seed Voiles, Awning Stripes, Coin Spot, Cluster Stripes, Harlequin, Newport, Belmar, L'Aiglon and Dorothy, at **19¢ to 39¢ yd.**

BOWMAN'S—Main Floor



\$1.00

The Price On All Men's Straw Hats

—including yachts, telescopes and turban crowns; in Sennet, Jap and rough braids; sizes 6½ to 7½.

Panama and Leghorn Hats—telescope and full crowns; **\$2.75**; value \$3.98 to \$5.00.

Outing Hats—boys' **50¢**; men's **\$1.00**, including silk and Palm Beach.

BOWMAN'S—Third Floor