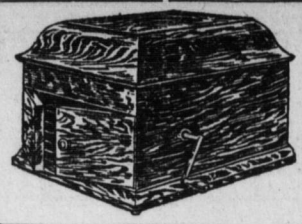


Victor Victrolas



Lend Character To the Home

Your home is characterized in a large measure by what is found therein. Think of what impression you could create if you have for the entertainment of your guests all those artists whose names are familiar to everyone!

Not alone for your guests' entertainment, but for your own; you should own a Victrola. Everything at your command when you want it.

Let our salesmen explain how you can have one in your home to-morrow. On easy terms.

Rothert's

312 MARKET ST.

NEWS OF THE RAILROADS

LOCOMOTIVE SALE OFFERS FEW BARGAINS

Pennsylvania Railroad Company Clears Sidings of Old Freight Engines

Bargains in old locomotives are attracting officials of small lines, and junk dealers to Altoona. The Pennsylvania Railroad Company is having a clean sweep sale of engines.

The locomotives include old time freight equipment, some "dinky" engines and a few "shifters." The smaller railroad lines will be able to use the freight engines, and manufacturers having yards about their plants, are looking over the small type locomotives.

These engines have been stored along the sidings of the main line for many months. Some are not worth more than the price paid for junk. The majority of the engines will be sold for scrap iron. Bells and other brass fixings have been removed. The officials claim that the room occupied by these old engines is needed for other equipment.

Standing of the Crews

HARRISBURG SIDE

Philadelphia Division—132 crew to go first after 10 o'clock: 102, 103, 104, 125, 115, 114, 118, 117, 101, 121, 106, 131, 122.

Engineers for 101, 125, 154. Firemen for 108, 114, 122. Brakemen for 102, 104, 114, 118, 121, 123.

Engineers up: Young, Bissinger, Denison, Speas, Criswell, Wolfe, McGuire, Wambach, Buck, Stattler, Henricks, Supple, J. J. Sellers, Smetzer, Powell, First, Strooper, Foster, Rayman, Hindman, Brubaker, Alright, Eads, Manning, Herman, McCauley, Madenford, Hubler, Welsh.

Firemen up: Dodd, Kearney, Gilbert, Farmer, Brenner, Gelsinger, Penwell, Rhoads, Shive, Belman, Mulholm, Whicello, Collier, Durall, Horstick, Shaffer, Manning, Herman, Bushey, Huston, McCurdy, Robinson, Myers, Sees, Miller, Moffatt, Cronister, Spring, Arnsberger, Evarhart, entzer, Flagman up: Witmyer.

Brakemen up: Bryson, Allen, Dengler, Felker, Wolfe, Griffie, Shultzer, Berger, Knupp, Stehman, Albricht, Rogner, McGinnis, Bussler, Hivner, Koehenour, Arment, Wiland, Mummaw, Riley, Baltoser.

Middle Division—20 crew to go first after 1:40 p. m.: 227, 229, 230.

Preference: Laid off: 24, 23.

Fireman for 20.

Engineers: Moore, Kugler, Free, Clouser, Mumma, Webster.

Firemen up: Karstetter, Arnold, Liebau, Sheehey, Zedewitz, Wright, Conductors up: Gantt, Fraleigh, Eberle, Huber, Byrnes, Baskins, Keys, Paul, Patrick.

Brakemen up: Reese, Strauser, Risanger, Kaufman, Bell, Nearhood, Henderson, Troy, Frank, Wenerick, Spahr, Stahl.

YARD CREWS

Engineers up: Blosser, Meals, Stahl, Swab, Crist, Harvey, Saltman, Kuhn, Snyder, Pelton, Shaver, Landis, Hoyler, Beck, Harter, G. C. B. 19.

Firemen up: Bartolet, Getty, Barkey, Sheets, Blair, Eyde, Bostford, Schiefer, Rauch, Weiser, Sackman, Cookerley, Mays, Sholter, Ullsh, Snell.

Engineers for 10, 3rd 24, 32.

Firemen for 6, 2nd 8, 18, 55.

ENOLA SIDE

Philadelphia Division—210 crew to go first after 12 o'clock: 236, 208, 214, 205, 213, 223, 215, 242.

Firemen for 7, 11, 12, 13.

Engineers up: Richwine, Wood, Fortney, Sweetley, Fetrow, Martin, Mertke, Bonawit, Morrison, Morne, Wireman, Pletz, Woland.

Firemen up: Anspach, Keefer, Nye, Anders, Hendry, Bingham, Hinkle, Holbert, Ely, Epley, Rapp, Wars, Hoover, Grimes, Shader, Yoder, Zwick, Stephens, Paxton, Carlin, Brown, Heckman.

Brakemen up: Orris, Wolfe.

Conductors up: Page, Esmininger, Shearer, Melroy, Bingham, Hinkle, Holbert, Ely, Epley, Rapp, Wars, Hoover, Grimes, Shader, Yoder, Zwick, Stephens, Paxton, Carlin, Brown, Heckman.

Middle Division—195 crew to go after 3 p. m.: 111, 118, 215, 231, 234, 214, 241, 228, 250, 242, 237.

Laid off: 107, 101, 102.

Brakeman for 118.

THE READING

Harrisburg Division—17 crew first to go after 9:30 a. m.: 23, 7, 10, 4, 3, 14, 19, 11, 5.

East-bound: 70, 55, 63, 57, 51, 61, 62.

Firemen for 70, 10, 11, 19.

Engineers up: 7, 11, 12, 13.

Firemen up: Richwine, Wood, Fortney, Sweetley, Fetrow, Martin, Mertke, Bonawit, Morrison, Morne, Wireman, Pletz, Woland.

Firemen up: Anspach, Keefer, Nye, Anders, Hendry, Bingham, Hinkle, Holbert, Ely, Epley, Rapp, Wars, Hoover, Grimes, Shader, Yoder, Zwick, Stephens, Paxton, Carlin, Brown, Heckman.

Brakemen up: Orris, Wolfe.

Conductors up: Page, Esmininger, Shearer, Melroy, Bingham, Hinkle, Holbert, Ely, Epley, Rapp, Wars, Hoover, Grimes, Shader, Yoder, Zwick, Stephens, Paxton, Carlin, Brown, Heckman.

Middle Division—195 crew to go after 3 p. m.: 111, 118, 215, 231, 234, 214, 241, 228, 250, 242, 237.

Laid off: 107, 101, 102.

Brakeman for 118.

THE READING

Harrisburg Division—17 crew first to go after 9:30 a. m.: 23, 7, 10, 4, 3, 14, 19, 11, 5.

East-bound: 70, 55, 63, 57, 51, 61, 62.

Firemen for 70, 10, 11, 19.

Engineers up: 7, 11, 12, 13.

Firemen up: Richwine, Wood, Fortney, Sweetley, Fetrow, Martin, Mertke, Bonawit, Morrison, Morne, Wireman, Pletz, Woland.

Firemen up: Anspach, Keefer, Nye, Anders, Hendry, Bingham, Hinkle, Holbert, Ely, Epley, Rapp, Wars, Hoover, Grimes, Shader, Yoder, Zwick, Stephens, Paxton, Carlin, Brown, Heckman.

Brakemen up: Orris, Wolfe.

Conductors up: Page, Esmininger, Shearer, Melroy, Bingham, Hinkle, Holbert, Ely, Epley, Rapp, Wars, Hoover, Grimes, Shader, Yoder, Zwick, Stephens, Paxton, Carlin, Brown, Heckman.

Middle Division—195 crew to go after 3 p. m.: 111, 118, 215, 231, 234, 214, 241, 228, 250, 242, 237.

Laid off: 107, 101, 102.

Brakeman for 118.

THE READING

Harrisburg Division—17 crew first to go after 9:30 a. m.: 23, 7, 10, 4, 3, 14, 19, 11, 5.

East-bound: 70, 55, 63, 57, 51, 61, 62.

Firemen for 70, 10, 11, 19.

Engineers up: 7, 11, 12, 13.

Firemen up: Richwine, Wood, Fortney, Sweetley, Fetrow, Martin, Mertke, Bonawit, Morrison, Morne, Wireman, Pletz, Woland.

Firemen up: Anspach, Keefer, Nye, Anders, Hendry, Bingham, Hinkle, Holbert, Ely, Epley, Rapp, Wars, Hoover, Grimes, Shader, Yoder, Zwick, Stephens, Paxton, Carlin, Brown, Heckman.

Brakemen up: Orris, Wolfe.

Conductors up: Page, Esmininger, Shearer, Melroy, Bingham, Hinkle, Holbert, Ely, Epley, Rapp, Wars, Hoover, Grimes, Shader, Yoder, Zwick, Stephens, Paxton, Carlin, Brown, Heckman.

Middle Division—195 crew to go after 3 p. m.: 111, 118, 215, 231, 234, 214, 241, 228, 250, 242, 237.

Laid off: 107, 101, 102.

Brakeman for 118.

THE READING

Harrisburg Division—17 crew first to go after 9:30 a. m.: 23, 7, 10, 4, 3, 14, 19, 11, 5.

East-bound: 70, 55, 63, 57, 51, 61, 62.

Firemen for 70, 10, 11, 19.

Engineers up: 7, 11, 12, 13.

Firemen up: Richwine, Wood, Fortney, Sweetley, Fetrow, Martin, Mertke, Bonawit, Morrison, Morne, Wireman, Pletz, Woland.

Firemen up: Anspach, Keefer, Nye, Anders, Hendry, Bingham, Hinkle, Holbert, Ely, Epley, Rapp, Wars, Hoover, Grimes, Shader, Yoder, Zwick, Stephens, Paxton, Carlin, Brown, Heckman.

Brakemen up: Orris, Wolfe.

Conductors up: Page, Esmininger, Shearer, Melroy, Bingham, Hinkle, Holbert, Ely, Epley, Rapp, Wars, Hoover, Grimes, Shader, Yoder, Zwick, Stephens, Paxton, Carlin, Brown, Heckman.

Middle Division—195 crew to go after 3 p. m.: 111, 118, 215, 231, 234, 214, 241, 228, 250, 242, 237.

Laid off: 107, 101, 102.

Brakeman for 118.

THE READING

Harrisburg Division—17 crew first to go after 9:30 a. m.: 23, 7, 10, 4, 3, 14, 19, 11, 5.

East-bound: 70, 55, 63, 57, 51, 61, 62.

Firemen for 70, 10, 11, 19.

Engineers up: 7, 11, 12, 13.

Firemen up: Richwine, Wood, Fortney, Sweetley, Fetrow, Martin, Mertke, Bonawit, Morrison, Morne, Wireman, Pletz, Woland.

Firemen up: Anspach, Keefer, Nye, Anders, Hendry, Bingham, Hinkle, Holbert, Ely, Epley, Rapp, Wars, Hoover, Grimes, Shader, Yoder, Zwick, Stephens, Paxton, Carlin, Brown, Heckman.

Brakemen up: Orris, Wolfe.

Conductors up: Page, Esmininger, Shearer, Melroy, Bingham, Hinkle, Holbert, Ely, Epley, Rapp, Wars, Hoover, Grimes, Shader, Yoder, Zwick, Stephens, Paxton, Carlin, Brown, Heckman.

Middle Division—195 crew to go after 3 p. m.: 111, 118, 215, 231, 234, 214, 241, 228, 250, 242, 237.

Laid off: 107, 101, 102.

Brakeman for 118.

THE READING

Harrisburg Division—17 crew first to go after 9:30 a. m.: 23, 7, 10, 4, 3, 14, 19, 11, 5.

East-bound: 70, 55, 63, 57, 51, 61, 62.

Firemen for 70, 10, 11, 19.

Engineers up: 7, 11, 12, 13.

Firemen up: Richwine, Wood, Fortney, Sweetley, Fetrow, Martin, Mertke, Bonawit, Morrison, Morne, Wireman, Pletz, Woland.

Firemen up: Anspach, Keefer, Nye, Anders, Hendry, Bingham, Hinkle, Holbert, Ely, Epley, Rapp, Wars, Hoover, Grimes, Shader, Yoder, Zwick, Stephens, Paxton, Carlin, Brown, Heckman.

Brakemen up: Orris, Wolfe.

Conductors up: Page, Esmininger, Shearer, Melroy, Bingham, Hinkle, Holbert, Ely, Epley, Rapp, Wars, Hoover, Grimes, Shader, Yoder, Zwick, Stephens, Paxton, Carlin, Brown, Heckman.

Middle Division—195 crew to go after 3 p. m.: 111, 118, 215, 231, 234, 214, 241, 228, 250, 242, 237.

Laid off: 107, 101, 102.

Brakeman for 118.

THE READING

Harrisburg Division—17 crew first to go after 9:30 a. m.: 23, 7, 10, 4, 3, 14, 19, 11, 5.

East-bound: 70, 55, 63, 57, 51, 61, 62.

Firemen for 70, 10, 11, 19.

Engineers up: 7, 11, 12, 13.

Firemen up: Richwine, Wood, Fortney, Sweetley, Fetrow, Martin, Mertke, Bonawit, Morrison, Morne, Wireman, Pletz, Woland.

Firemen up: Anspach, Keefer, Nye, Anders, Hendry, Bingham, Hinkle, Holbert, Ely, Epley, Rapp, Wars, Hoover, Grimes, Shader, Yoder, Zwick, Stephens, Paxton, Carlin, Brown, Heckman.

Brakemen up: Orris, Wolfe.

Conductors up: Page, Esmininger, Shearer, Melroy, Bingham, Hinkle, Holbert, Ely, Epley, Rapp, Wars, Hoover, Grimes, Shader, Yoder, Zwick, Stephens, Paxton, Carlin, Brown, Heckman.

Middle Division—195 crew to go after 3 p. m.: 111, 118, 215, 231, 234, 214, 241, 228, 250, 242, 237.

Laid off: 107, 101, 102.

Brakeman for 118.

THE READING

Harrisburg Division—17 crew first to go after 9:30 a. m.: 23, 7, 10, 4, 3, 14, 19, 11, 5.

East-bound: 70, 55, 63, 57, 51, 61, 62.

Firemen for 70, 10, 11, 19.

Engineers up: 7, 11, 12, 13.

Firemen up: Richwine, Wood, Fortney, Sweetley, Fetrow, Martin, Mertke, Bonawit, Morrison, Morne, Wireman, Pletz, Woland.

Firemen up: Anspach, Keefer, Nye, Anders, Hendry, Bingham, Hinkle, Holbert, Ely, Epley, Rapp, Wars, Hoover, Grimes, Shader, Yoder, Zwick, Stephens, Paxton, Carlin, Brown, Heckman.

Brakemen up: Orris, Wolfe.

Conductors up: Page, Esmininger, Shearer, Melroy, Bingham, Hinkle, Holbert, Ely, Epley, Rapp, Wars, Hoover, Grimes, Shader, Yoder, Zwick, Stephens, Paxton, Carlin, Brown, Heckman.

Middle Division—195 crew to go after 3 p. m.: 111, 118, 215, 231, 234, 214, 241, 228, 250, 242, 237.

Laid off: 107, 101, 102.

Brakeman for 118.

THE READING

Harrisburg Division—17 crew first to go after 9:30 a. m.: 23, 7, 10, 4, 3, 14, 19, 11, 5.

East-bound: 70, 55, 63, 57, 51, 61, 62.

Firemen for 70, 10, 11, 19.

Engineers up: 7, 11, 12, 13.

Firemen up: Richwine, Wood, Fortney, Sweetley, Fetrow, Martin, Mertke, Bonawit, Morrison, Morne, Wireman, Pletz, Woland.

Firemen up: Anspach, Keefer, Nye, Anders, Hendry, Bingham, Hinkle, Holbert, Ely, Epley, Rapp, Wars, Hoover, Grimes, Shader, Yoder, Zwick, Stephens, Paxton, Carlin, Brown, Heckman.

Brakemen up: Orris, Wolfe.

Conductors up: Page, Esmininger, Shearer, Melroy, Bingham, Hinkle, Holbert, Ely, Epley, Rapp, Wars, Hoover, Grimes, Shader, Yoder, Zwick, Stephens, Paxton, Carlin, Brown, Heckman.

Middle Division—195 crew to go after 3 p. m.: 111, 118, 215, 231, 234, 214, 241, 228, 250, 242, 237.

Laid off: 107, 101, 102.

Brakeman for 118.

THE READING

Harrisburg Division—17 crew first to go after 9:30 a. m.: 23, 7, 10, 4, 3, 14, 19, 11, 5.

East-bound: 70, 55, 63, 57, 51, 61, 62.

Firemen for 70, 10, 11, 19.

Engineers up: 7, 11, 12, 13.

Firemen up: Richwine, Wood, Fortney, Sweetley, Fetrow, Martin, Mertke, Bonawit, Morrison, Morne, Wireman, Pletz, Woland.

Firemen up: Anspach, Keefer, Nye, Anders, Hendry, Bingham, Hinkle, Holbert, Ely, Epley, Rapp, Wars, Hoover, Grimes, Shader, Yoder, Zwick, Stephens, Paxton, Carlin, Brown, Heckman.

Brakemen up: Orris, Wolfe.

Conductors up: Page, Esmininger, Shearer, Melroy, Bingham, Hinkle, Holbert, Ely, Epley, Rapp, Wars, Hoover, Grimes, Shader, Yoder, Zwick, Stephens, Paxton, Carlin, Brown, Heckman.

Middle Division—195 crew to go after 3 p. m.: 111, 118, 215, 231, 234, 214, 241, 228, 250, 242, 237.

Laid off: 107, 101, 102.

Brakeman for 118.

THE READING

Harrisburg Division—17 crew first to go after 9:30 a. m.: 23, 7, 10, 4, 3, 14, 19, 11, 5.

East-bound: 70, 55, 63, 57, 51, 61, 62.

Firemen for 70, 10, 11, 19.

Engineers up: 7, 11, 12, 13.

Firemen up: Richwine, Wood, Fortney, Sweetley, Fetrow, Martin, Mertke, Bonawit, Morrison, Morne, Wireman, Pletz, Woland.

Firemen up: Anspach, Keefer, Nye, Anders, Hendry, Bingham, Hinkle, Holbert, Ely, Epley, Rapp, Wars, Hoover, Grimes, Shader, Yoder, Zwick, Stephens, Paxton, Carlin, Brown, Heckman.

Brakemen up: Orris, Wolfe.

Conductors up: Page, Esmininger, Shearer, Melroy, Bingham, Hinkle, Holbert, Ely, Epley, Rapp, Wars, Hoover, Grimes, Shader, Yoder, Zwick, Stephens, Paxton, Carlin, Brown, Heckman.

Middle Division—195 crew to go after 3 p. m.: 111, 118, 215, 231, 234, 214, 241, 228, 250, 242, 237.

Laid off: 107, 101, 102.

Brakeman for 118.

THE READING

Harrisburg Division—17 crew first to go after 9:30 a. m.: 23, 7, 10, 4, 3, 14, 19, 11, 5.

East-bound: 70, 55, 63, 57, 51, 61, 62.

Firemen for 70, 10, 11, 19.

Engineers up: 7, 11, 12, 13.

Firemen up: Richwine, Wood, Fortney, Sweetley, Fetrow, Martin, Mertke, Bonawit, Morrison, Morne, Wireman, Pletz, Woland.

Firemen up: Anspach, Keefer, Nye, Anders, Hendry, Bingham, Hinkle, Holbert, Ely, Epley, Rapp, Wars, Hoover, Grimes, Shader, Yoder, Zwick, Stephens, Paxton, Carlin, Brown, Heckman.

Brakemen up: Orris, Wolfe.

Conductors up: Page, Esmininger, Shearer, Melroy, Bingham, Hinkle, Holbert, Ely, Epley, Rapp, Wars, Hoover, Grimes, Shader, Yoder, Zwick, Stephens