

For Sale

1022 N. Second St., 2-story brick.
2033 N. Second St., lot 50x182 ft.
1810 N. Third St., store room and
two apartments.
1714 State St., 3-story brick.
1805 Green St., 3-story brick.
1016 Swatara St., 3-story frame.

PAXTANG

2 1/2-story frame, lot 72x150 ft.
Lot, Paxtang Ave., 85x150 ft.

SPEECEVILLE

2 furnished cottages along river,
6 acres of ground, 2 hundred fruit
trees, beautiful summer place.

FOR RENT

2223-25 Atlas Ave., 2-story brick,
all improvements, electric lights,
\$15.00

H. M. BIRD

UNION TRUST BLDG.

FARMS For Sale

ALL GRADES AND SIZES

From 48 acres—fair buildings
—for \$900—to 311 acres, good
buildings for \$3750. Lots and
acreage for suburban resi-
dences and farms for flowers,
chickens, "truck" or vegetables.
Come and see the country—it's
delightful. A "Jitney" to show
you around.

C. B. Care

Care's Grocery Linglestown, Pa.
A description at 409 Market street,
Harrisburg.

Try Telegraph Want Ads

ANNUAL OUTING OF HERMAN STAFF AT THE AQUEDUCT

E. S. Herman, president of the City Planning Commission, is entertaining his office and staff and employees of the shipping department at his summer cottage at Aqueduct. This is an annual event for the staff of the Herman tobacco firm and all participating look forward to the outing with much pleasure. During the two or three days of the occasion at the Aqueduct the head of the house and his efficient lieutenants mix business with pleasure and have a fine time in the open. Mr. Herman is extremely popular with his men and the annual reunion is always a red-letter day in the history of the firm.

A BAD STRETCH OF CURBING

Unless the little controversy between the Department of Highways and the paving contractors over the responsibility for realigning the curbing along the west side of Front street, between Kolker and Mackay, is soon ended, this work will have to be done after Park Commissioner Taylor has completed his grading. This would mean undoing much of the work which he is now engaged in completing, but it is still hoped that the curbing will be put in position before it is too late to prevent interference with the park operation at that point. It will be recalled that before there was sufficient embankment to hold the curbing and the heavy granite blocks have settled out of position.

BRITISH MAKE GAINS

Paris, May 8, 2:30 P. M.—The French War Office this afternoon gave out a report on the progress of hostilities which reads: "To the south of Ypres, at hill No. 60, the British troops yesterday recaptured a further section of the trenches lost by them three days ago."

CHICAGO BOARD OF TRADE

Chicago, Ill., May 8.—Board of Trade closing: July, 126 1/2; Wheat—May, 53 1/2; July, 76 1/2; Oats—May, 53 1/2; July, 52 1/2; Pork—July, 18.00; September, 18.42; Lard—July, 8.2; September, 10.02; Ribs—July, 10.55; September, 10.85.

FOR SALE

For \$3,000 you can buy a three-story brick house with all modern improvements, porch, side entrance, front and rear streets paved, located at 1840 Park street.

J. E. GIPPLE

1251 MARKET STREET

PRICES BREAK IN EARLY DEALINGS

U. S. Steel Was Center of Heavy Selling Movement in Wall Street Today

New York, May 8.—Wall Street—Prices broke two to ten points in today's early dealings on the stock exchange, overnight developments in connection with the sinking of the Lusitania provoking general liquidation. U. S. Steel was the center of a heavy selling movement, 15,000 shares being offered at a maximum concession of 2 1/2 points. A block of 5,000 Westinghouse changed hands at a loss of 7 to 10 points. Reading, Union Pacific, Canadian Pacific and Metal stocks lost 2 to 3 points. What looked like concerted support was seen soon after the opening, full recoveries being scored by amalgamated Copper, American Smelting and Mexican Petroleum. Other international stocks like Union Pacific and Steel reduced their losses to fractions. Tractions in the first half hour were estimated at between 400,000 and 500,000 shares.

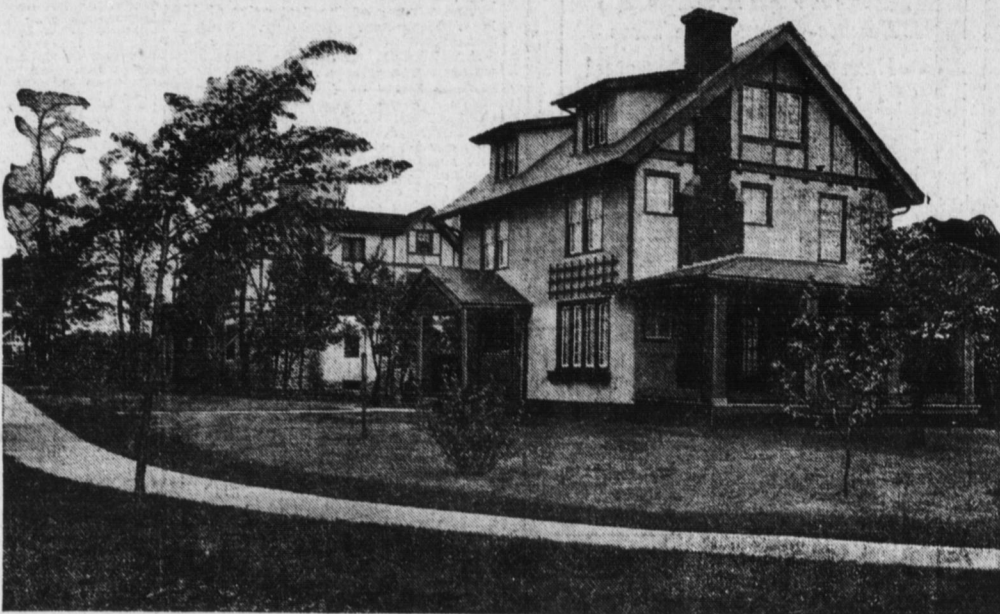
NEW YORK STOCKS

| | Open | High | Low | Close |
|--------------|---------|---------|---------|---------|
| Amal Con | 65 1/2 | 68 1/2 | 65 1/2 | 68 |
| Am Bt Sug | 43 | 44 1/2 | 43 | 44 |
| Am Can | 32 | 34 1/2 | 31 1/2 | 33 1/2 |
| Am C & F | 47 1/2 | 51 | 47 1/2 | 51 |
| Am Cot Oil | 45 1/2 | 48 | 45 1/2 | 47 1/2 |
| Am Ice Sec | 30 1/2 | 31 1/2 | 30 1/2 | 30 1/2 |
| Am Loco | 45 | 47 1/2 | 44 1/2 | 45 1/2 |
| Am Smelt | 65 | 66 1/2 | 64 1/2 | 65 1/2 |
| Am Sugar | 106 1/2 | 107 | 106 1/2 | 107 |
| Am T & T | 120 1/2 | 120 1/2 | 120 1/2 | 120 1/2 |
| Anaconda | 31 1/2 | 33 | 31 1/2 | 32 1/2 |
| Atchafson | 98 1/2 | 99 1/2 | 98 1/2 | 99 1/2 |
| B & O | 72 | 72 1/2 | 71 1/2 | 72 1/2 |
| Can Pac | 144 1/2 | 145 1/2 | 140 1/2 | 141 1/2 |
| Bklyn R T | 85 1/2 | 88 | 85 1/2 | 88 |
| Cal Petro | 15 1/2 | 16 1/2 | 15 1/2 | 16 1/2 |
| Can Pac | 154 | 156 1/2 | 154 | 156 1/2 |
| Cent Leath | 34 1/2 | 36 1/2 | 34 1/2 | 36 1/2 |
| C & O | 42 1/2 | 44 1/2 | 42 1/2 | 44 1/2 |
| C M & St P | 90 | 91 1/2 | 90 | 91 1/2 |
| C Con Cop | 41 | 43 1/2 | 41 | 43 1/2 |
| Col F & I | 25 1/2 | 26 1/2 | 25 1/2 | 26 1/2 |
| Corn Prod | 14 | 15 1/2 | 14 | 15 1/2 |
| Errie | 24 1/2 | 25 1/2 | 24 1/2 | 25 1/2 |
| Errie 1st pd | 39 1/2 | 40 1/2 | 39 1/2 | 40 1/2 |
| Goodrh BP | 42 | 44 1/2 | 41 | 43 1/2 |
| Gr Nor pd | 115 1/2 | 117 1/2 | 115 1/2 | 116 1/2 |
| Gr N Ore | 11 1/2 | 12 1/2 | 11 1/2 | 12 1/2 |
| Ill Cent | 108 | 108 1/2 | 108 | 108 1/2 |
| In-Met | 18 | 19 1/2 | 18 | 19 1/2 |
| In-Met Pfd | 67 | 68 1/2 | 67 | 68 1/2 |
| K & S | 24 1/2 | 25 1/2 | 24 1/2 | 25 1/2 |
| Lehigh Val | 139 | 139 1/2 | 138 1/2 | 139 1/2 |
| Louis & N | 120 | 120 1/2 | 120 | 120 1/2 |
| Mex Petro | 74 1/2 | 76 1/2 | 74 1/2 | 75 |
| M, K & T | 12 | 12 1/2 | 12 | 12 1/2 |
| Mo Pac | 13 1/2 | 14 1/2 | 13 1/2 | 14 1/2 |
| Nat Lead | 57 | 59 1/2 | 57 | 59 |
| Nev C C | 13 1/2 | 14 1/2 | 13 1/2 | 14 1/2 |
| N Y Cent | 84 1/2 | 85 1/2 | 84 1/2 | 85 1/2 |
| N Y NH & H | 82 1/2 | 85 | 82 1/2 | 84 1/2 |
| Nor & W | 103 | 103 1/2 | 103 | 103 1/2 |
| Nor Pac | 104 | 105 1/2 | 103 1/2 | 104 1/2 |
| P R R | 107 | 107 1/2 | 107 | 107 1/2 |
| Pgh Coal | 20 1/2 | 21 1/2 | 20 1/2 | 21 |
| Press S Car | 44 | 46 | 44 | 44 1/2 |
| R C Cop | 24 1/2 | 25 1/2 | 24 1/2 | 25 1/2 |
| Reading | 142 | 143 1/2 | 141 | 142 1/2 |
| R I & S | 25 1/2 | 26 1/2 | 25 1/2 | 25 1/2 |
| So Pacific | 87 | 88 1/2 | 86 1/2 | 88 1/2 |
| So Railway | 16 | 17 1/2 | 16 | 17 1/2 |
| Tenn Cop | 29 | 30 1/2 | 29 | 30 1/2 |
| Third Ave | 47 1/2 | 48 1/2 | 47 1/2 | 47 1/2 |
| Union Pac | 123 | 125 1/2 | 123 | 124 1/2 |
| U S Rubber | 60 1/2 | 61 1/2 | 59 | 61 |
| U S Steel | 54 1/2 | 57 1/2 | 53 1/2 | 53 1/2 |
| Utah Cop | 61 | 64 1/2 | 61 | 63 1/2 |
| Va C C | 30 | 30 1/2 | 30 | 30 1/2 |
| West U Tel | 65 1/2 | 67 | 64 1/2 | 66 1/2 |
| West Mfg | 82 | 89 1/2 | 82 | 87 1/2 |

PHILADELPHIA PRODUCE

Philadelphia, May 8.—Wheat—Lower, No. 2 red, car lots, export, \$1.52@1.55; No. 1, Northern, Duluth, export, \$1.53@1.54; Market lower; No. 2, spot, export, 77 1/2@78 1/2; No. 2, yellow, local, \$1.48@1.49.
Oats—Lower, No. 2, white, 62@62 1/2; Bran—Steady; winter, per ton, \$30.00; Spring, per ton, \$28.00@28.50.
Refined Sugar—Firm; powdered, 5.10c; fine granulated, 6.00c; confectioners' A, 7.30c.
Butter—The market is firm; western, creamery, extras, 31c; nearby, prints, fancy, 34c.
Eggs—The market is firm; Pennsylvania and other nearby firsts, free cases, \$5.00 per case; do., current receipts, free cases, \$5.85 per case; western, extras, firsts, free cases, \$5.00 per case; do., firsts, free cases, \$5.55 per case.
Live Poultry—Steady; fowls, 17@17 1/2; old roosters, 12@12 1/2; chickens, 12@13c; do., broilers, 20@25c; turkeys, 13@15c; ducks, 13@15c; geese, 10@11c; geese, 10@11c.
Dressed Poultry—Firm; fresh killed fowls, fancy, 18@19c; do., aver-

The Homeland Beautiful BELLEVUE PARK



"CHEVY CHASE"

One of a number of beautiful homes of exclusive types, built for sale in this ideal home section

Rich in architectural beauty—ideal in interior arrangement—luxurious in home-comforts—conscientiously constructed.

Location 21st Street and Hillside Road. Size of Plot 80x120 ft.

OPEN FOR INSPECTION DAILY

In Bellevue Park we have many desirable and spacious homesites with all city conveniences, at lower prices per front foot than prevail in any other desirable residence section in Harrisburg.

REPRESENTATIVES ALWAYS ON THE GROUND

MILLER BROTHERS & CO.,

SELLING AGENTS FOR BELLEVUE PARK

Federal Square Bell Phone 1595 Harrisburg, Pa.

Reservoir Park cars run direct to Bellevue Park—21st and Market streets.

Automobile Owners Attention!

We are the local representatives of the UNION CASUALTY COMPANY OF PHILADELPHIA, THE STRONGEST AUTOMOBILE INSURANCE COMPANY OF PENNSYLVANIA. Our rates are positively the lowest quoted in the city. We adjust and pay all claims in our office in this city. No delay or red tape. SPECIAL PLEASURE CAR RATES ON ALL MODELS OF THE

Ford and Overland

Liability Property Damage Collision

\$49

Liability Property Damage Collision

\$55

All other models whether used for pleasure or business covered at proportionate rates. If you want insurance that insures, phone, write or call on us, "DO IT NOW."

Pennsylvania Insurance Exchange, Inc.

34 Union Trust Building

Bell Phone 2480

WM. C. WANBAUGH, President.

WM. H. EBY, Jr. Sec'y-Treas.



Harrisburg's Most Attractive Home Offerings

Nowhere in Harrisburg will be found better or more substantially built homes than these new houses which are located in one of the city's most desirable sections. Nothing but the best of materials and workmanship were employed in the construction, all of which was done under careful inspection.

Two-and-one-half story brick, built in pairs—8 rooms, pantry and bath—open stairway—oak finish, first floor—white enamel finish on upper floors—the bath room—steam heat—cement cellar—laundry with tubs—sanitary open plumbing—gas—electricity—10 foot front porch—rear porch and balcony—beautifully papered throughout—slate roof—front and back sodded lawns—granite sidewalks—paved streets—size of lots about 21x115 feet—11 feet between pairs—Located at

Fourteenth and Cumberland Streets

REASONABLE PRICES—DELIGHTFUL LOCATION—CONVENIENT TERMS REPRESENTATIVE ON THE PREMISES

Open Daily For Inspection, Including Sunday

FOR FULL INFORMATION APPLY TO EITHER OF THE FOLLOWING

M. B. COWDEN
Commonwealth Trust Building

O. M. COPELIN
14th and Verbeke Streets

R. OENSLAGER
711 N. Third Street



This handsome 15 room modern dwelling, finished in hardwood, with all conveniences—water, gas, electricity—has been thoroughly overhauled and can be purchased at a great sacrifice.

Lot is 200x300—and is handsomely laid out with hedges, plants and flowers. Large cement swimming pool in rear of lawn. Is located at Camp Hill, a suburb of Harrisburg—only twenty minutes by trolley from the Capitol.

Go out and look it over. It will surely please you.

Details and information from

James G. Hatz, Esq.

Calder Building

Harrisburg Pa.

age, 16@17c; do., unattractive, 14@15c; old roosters, 13 1/2c; frozen fowls, 16@18c; roasting chickens, 17@20c; broiled chickens, 22@25c; turkeys, 18@22c; ducks, 12@18c; geese, 12@16c.
Potatoes—Market steady; Pennsylvania, per bushel, 50@52c; Maine, per bushel, 50@52c; New York, per bushel, 43@45c; Florida, per barrel, \$3.50@5.25.
Flour—The market is weak; winter, clear, \$3.50@4.10; straight, 1st, \$3.50@4.10; vana, \$7.00@7.25; spring, straight, \$7.25@7.50; do., patents, \$7.60@8.50; western, \$4.25@4.40; patents, \$4.50@4.75; Kansas straight, 4 1/2 sacks, \$4.15@4.30; spring, firsts, clear, \$4.00@4.20; straight, \$4.20@4.30; patents, \$4.35@4.40.
Hay—The market is firm; timothy, No. 1, large bales, \$15.50@20.00; No. 1, medium bales, \$15.50@20.00; No. 2, do., \$17.50@18.50; No. 3, \$15.50@16.50; sample, \$14.00@15.00.
Clover mixed hay, light mixed, \$19.00@19.50; No. 1, do., \$18.00@18.50; No. 2, \$16.00@17.00.

CHICAGO CATTLE

Chicago, Ill., May 8.—Hogs—Receipts, 8,000; steady. Bulk of sales, \$7.25@7.50; light, \$7.20@7.50; heavy, \$7.10@7.65; heavy, \$5.20@7.45; rough, \$6.80@6.95; pigs, \$5.25@6.50.
Cattle—Receipts, 100; steady. Native beef steers, \$6.50@8.90; western steers, \$5.75@7.60; cows and heifers, \$3.00@8.60; calves, \$6.50@8.25.
Sheep—Receipts, 500; steady. Sheep, \$7.50@8.50; lambs, \$8.25@10.60.

PHILADELPHIA STOCKS

Philadelphia, May 8.—Stocks closed lower.
Cambria Steel 47 1/2
General Asphalt 25
General Asphalt, Pfd. 64
Lake Superior Corporation 7
Lehigh Navigation 73 1/2
Lehigh Valley 69 1/2
Pennsylvania Railroad 53 1/2
Philadelphia Electric 24
Philadelphia Company 35
Philadelphia Rapid Transit, Bid 8
Reading 71 1/2
Storage Battery 31
Union Traction 31 1/2
United Gas Improvement 83
United States Steel 55 1/2

NEW YORK BANK STATEMENT

New York, May 8.—The statement of the actual condition of Clearing House Banks and Trust Companies show that they hold \$162,392,840 in reserve in excess of legal requirements. This is a decrease of \$7,786,530 from last week.
The statement follows:
Actual Conditions
Loans, etc., \$2,445,480,000; increase, \$14,827,000.
Reserve in own vaults (B), \$419,777,000; decrease, \$1,720,000.
Reserve in Federal Reserve Bank, \$119,559,000; decrease, \$1,784,000.
Reserve in other depositories, \$27,324,000; decrease, \$2,704,000.
Net demand deposits, \$2,245,128,000; decrease, \$3,202,000.
Total, \$3,207,160,000; increase, \$1,922,000.
Circulation, \$37,866,000; increase, \$3,000.
(B). Of which \$347,648,000 is specie.
Aggregate reserve, \$585,861,000.
Excess reserve, \$162,392,840; decrease, \$7,786,530.