

# Dives, Pomeroy & Stewart

## Women's and Misses' Suit Attractions Include Many New Arrivals Hundreds of Garments Interestingly Priced

The showing of Suits is of a character that will appeal to every woman—there are scores of garments in styles that will serve every practical use, priced so interestingly that they come well within the means of every woman.

Navy blue and Copenhagen suits of fine quality weaves, in a plain tailored practical style, with circular skirt. Specially priced, **\$15.00**

Navy blue and Belgian blue suits of fine quality gabardine, with collar and cuffs in a flaring design; the suit is finished with satin covered buttons **\$16.50**

Navy, Belgian and black suits in a very good style that will appeal to the average woman, **\$18.50**

Sport suits in shepherd checks, navy and

Belgian blue, with trimming of buttons, **\$20.00**

Prince chap suits, in plain tailored styles, with full circular skirts; in navy, green, Belgian blue and checks **\$25.00**

\$37.50 and \$39.50 suits of imported serge with fancy colored collar and vest. Specially priced at **\$30.00**

Silk poplin suits in styles that cannot be matched in Harrisburg at the same cost, are now attracting the consideration of women who seek to be individually dressed. Prices range from **\$30.00 to \$39.50**

### Street Coats in Attractive Styles

Black poplin coats in several very good looking styles, at **\$10.00**

Navy blue poplin coats, with silk collar and cuffs **\$12.50**

Covert and shepherd check coats in military style, with full plaited back and lining of colored silk **\$15.00**

Black and white check coats with collar and cuffs of green or blue silk **\$18.50**

### \$14.50 and \$15.00 Cloth Dresses in New Styles, \$12.50

A clearance of twenty-five dresses specially reduced on account of the fact that there are now only two and three of a kind. In all sizes, for women and misses.

## Women's Ribbed Underwear for Summer in Many Styles Moderately Priced

White cotton ribbed vests; low neck and sleeveless; in plain or fancy yokes **25c**

White silk lisle ribbed vests; low neck and sleeveless, **37½c**; 3 for **\$1.00**

White lisle ribbed union suits; low neck and sleeveless; fancy yoke; knee length **50c**

### Women's Silk Hose of Quality, 79c

Black silk hose, fashioned feet; high spliced heels; four-inch lisle garter tops. Pair **79c**

Fancy silk hose; black boots; white and fancy striped tops; fashioned feet **\$1.00**

Black lisle out-size hose; fashioned feet **25c**

Fine silk lisle hose; seamless; in black, tan and white **25c**

## New Duntley Vacuum Cleaner, \$3.95

The latest 1915 model with adjustable brush attachment. This is a thoroughly efficient cleaner guaranteed both by the manufacturer and ourselves. This is an unusually low price for a vacuum cleaner of such merit as the Duntley.

Lawn Mowers—high wheels with three carbon steel blades, 9-inch open spoke wheels and side plate, high speed, self sharpener, highly finished—

10 inches, \$2.25	14 inches, \$2.75
12 inches, \$2.50	16 inches, \$3.00

Ball bearing lawn mowers, 9-inch open spoke wheels, 4 crucible steel blades on revolving cutter, dust proof ball bearings, highly finished—

12 inches, \$4.00	16 inches, \$4.50
14 inches, \$4.25	18 inches, \$4.75

High grade continuous length woven fabric rubber covered garden hose, made to withstand high pressure, cut any length, including couplings—

½-inch, foot, 10c	¾-inch, foot, 12c
-------------------	-------------------

American Water Motor Washing Machines, guaranteed to work on 20-lb. pressure, motor guaranteed for one year; brass cylinder only, valve in piston, reducing the number of working parts, long stroke motor, all glass enclosed, large tub, complete with hose **\$12.50**

Dining Room Domes, fitted complete for gas or electricity, \$7.00, \$19 and \$15 values, at \$5, \$7.50 and \$9.98

## Men's Interwoven Silk Half Hose, 50c

Interwoven silk half hose, high spliced heels, black, sand, champagne, white, navy, red, green, slate **50c**

Interwoven silk lisle half hose, seamless, black, tan, navy, slate, sand and white **25c**

Fibre silk half hose, seamless, in black, tan, navy and slate **25c**

### Men's Summer Underwear

White cotton ribbed union suits, short sleeves and ankle length **\$1.00**

Egyptian cotton ribbed union suits, short sleeves, ankle length **75c**

White madras athletic union suits, knee length **75c**

Egyptian balbriggan shirts and drawers; shirts long or short sleeves **25c**

## New Styles in Boys' Wash Suits

There's the Balkan style—the vestee effect—middles—Russians and Norfolks—all the popular cuts in demand this season. Shown in blue and white striped galatea, tan and plain blue linen, fancy madras line in brown, tan and blue, pique and white percale, sizes 2½ to 9 years **\$1.50, \$1.95, \$2.50, \$2.95 and \$3.50**

Oliver Twist suits—sizes 2½ to 8 years **50c to \$1.95**

## New White Dress Goods

At 25c, 39c and 50c—Voiles and Crepes in plain and novelty weaves, Irish poplin, Dotted Swiss and pique.

Plain white voile of soft sheer quality at **25c, 39c, 50c, 75c to \$1.00**

Rice cloth with small snowflake design; yard **25c, 39c, 50c to 85c**

Waffle weave and striped white skirtings; yard **39c**

White striped duck, 34 inches, three good patterns; yard **39c**

White gabardine, one of the most popular white weaves this season; yard **39c, 50c, 65c to \$1.00**

White ratine, 50 inches, new and beautiful designs; yard **50c, 85c, 95c, \$1.00 to \$1.25**

White Pique, a favorite fabric for skirts; yard **25c, 39c, 59c to 75c**

# Dives, Pomeroy & Stewart

## The Latest Styles in Large Straw Shapes LISERE MILAN HEMP HEMP LEGHORN

A shipment of large shapes in untrimmed straws arrived late this week, and the latest styles in lisere, milan hemp, hemp and leghorn are shown, offering many advanced ideas for dressy summer hats.

Some of the largest shapes yet introduced this season are in this new lot and its style importance should claim the attention of well-dressed women.

Large shapes in black, navy and white	<b>\$1.95 to \$6.50</b>	Milan hemp hats in white, black, sand and grey	<b>\$4.95, \$5.95 to \$6.50</b>
Hemp hats in white and black, in small, medium and large	<b>98c to \$6.50</b>	Leghorn hats	<b>\$1.95 to \$6.50</b>
		Children's chip, hemp and milan shapes	<b>49c to \$2.95</b>

## New Styles in Trimmed Hats

New styles fresh from the workroom, for women, misses and girls. Turbans and large shapes for women and misses and dainty mushroom styles trimmed with velvet ribbon and flowers for girls.

Our showing of hats at **\$4.95, \$5.95 and \$6.50** embraces a wide variety of smart, dressy styles, and our pattern hats at **\$6.95, \$7.50, \$8.00 to \$12.00** are all examples of pre-eminent style.

Dives, Pomeroy & Stewart, Second Floor, Front.

## 400 Yds. Fancy Warp Print Ribbons Priced at Less Than One Half for To-morrow

If these fine quality ribbons had been bought in a regular way it would be necessary to price them 59c a yard, so you easily appreciate the value they represent at **24c** a yard.

In light and dark grounds, 6 inches wide. A value not to be duplicated soon. 25c satin and fancy edge taffeta and moire ribbons, 5 inches wide, in desirable colors, Special, yard **19c**

Black velvet ribbons are now in great demand. We are happy to say that for the first time in the history of ribbon weaving we are able to offer velvet ribbons made in America. In 2½-inch to 3½ inches wide. Yard **6c to 89c**

Dives, Pomeroy & Stewart, Street Floor.

## Charming New Waists of Voile: Copies of High Cost Models: To Be Shown To-morrow at \$2.50

From one of New York's producers of ultra fashionable styles come these new creations, copied down to a price that is well within the means of the average woman.

Four new styles in voile blouses with trimming of hand embroidery and touches of organdie embroidery and lace insertion, one style is of box plaits and flit lace insertions. Another style is made with an Imperial frill. You'll not find waists in any other store to equal these, at **\$2.50**

Voile waists trimmed with organdie embroidery and lace insertion are very much in vogue; the sleeves are long and trimmed with lace insertion **\$2.50**

A very good looking voile blouse is made with an organdie vestee and box pleats, front and back; it is effectively finished with flit lace insertion and an organdie collar **\$2.50**

### A \$5.00 CREPE de CHINE KIMONO, \$3.95

The quality of crepe is very worthy and the collar and cuffs are finished with hemstitching. In lavender, rose, wistaria, light blue, Belgian and pink. An out-of-the-ordinary long kimono, for \$3.95. Two styles of long crepe kimonos are shown this week for \$1.00. One is loose in the back, the other is fitted at the waist with an elastic, in various colors; all of them desirable for summer.

Long crepe kimonos, with loose back or fitted waist line; sailor collar with hand embroidery or plaited frill of messaline **\$1.95 and \$2.50**

### PETTICOATS OF TAFFETA, \$5.00 TO \$10.00

Circular founce styles trimmed with narrow plaitings, rose quilting or narrow ruffles. In rose, taupe, Russian, Rocky Mountain blue, Belgian blue, navy and black. One is loose in the back, the other is fitted at the waist with an elastic, in various colors; all of them desirable for summer.

Messaline or Jersey Petticoats with founce in plaited or circular style **\$3.50 to \$5.95**

Cotton messaline Petticoats, with plaited founce **\$1.50**

## Men's \$20 Spring Suits at \$13.75

No misleading "sale" price—but a real value in clothes of the best quality and style. These are hand-tailored suits from regular stock and the special price is quoted because of the broken condition of the sizes in some styles. There are all sizes in the entire lot, however—34 to 40.

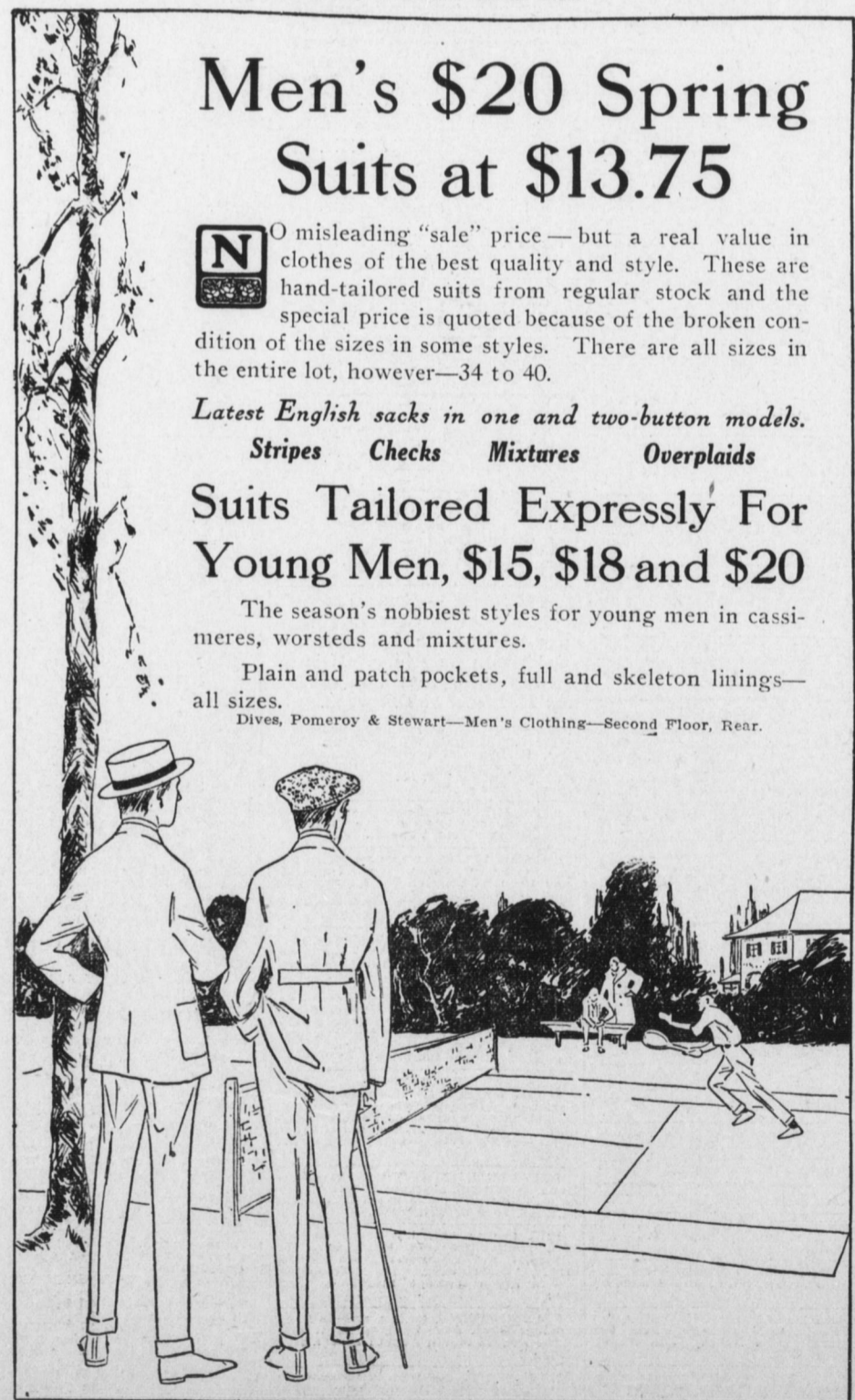
Latest English sacks in one and two-button models. Stripes Checks Mixtures Overplaids

## Suits Tailored Expressly For Young Men, \$15, \$18 and \$20

The season's nobbiest styles for young men in cassimeres, worsteds and mixtures.

Plain and patch pockets, full and skeleton linings—all sizes.

Dives, Pomeroy & Stewart—Men's Clothing—Second Floor, Rear.



## Stylish Queen Quality Pumps

One of the best makes of shoes for women bears the Queen Quality stamp of excellence and quality. We show a representative line of lasts and patterns in gun metal calf, dull kidskin and patent coltskin, one-eyelet ties, Colonial pumps and pumps. All Good-year welled soles with high Cuban and French heels

### Educator Shoes For Children

Broad, roomy lasts with Goodyear welled oak leather soles; gun metal calf, patent coltskin and tan willow calf—

Sizes 5 to 8, **\$1.75** Sizes 8½ to 11, **\$2.00** Sizes 11½ to 2, **\$2.50**

White Nubuck Educator shoes—

Sizes 5 to 8, **\$2.00** Sizes 8½ to 11, **\$2.50** Sizes 11½ to 2, **\$3.00**

## Men's Educator Shoes and Oxfords

The most comfortable and best fitting shoes made—gun metal calf, black kidskin and tan Russia calf—broad toe lasts with white oak leather Goodyear welled soles and broad heels **\$4.50**

Dives, Pomeroy & Stewart, Street Floor, Rear.



## Trefousse Real Kid Gloves Are Gloves of Real Distinction

We heartily recommend Trefousse gloves to women who discriminate in their outer apparel. In various qualities imported direct from France—

Trefousse gloves of finest quality real kid in black with white embroidery and white sewing; pair **\$2.25**

Trefousse Sans Pareil 2-clasp kid gloves, in black with white embroidery and white sewing; pair **\$2.00**

Two-clasp kid gloves, in colors, white and black **\$1.50 to \$2.00**

Washable 75c chamoisette gloves with three pearl buttons, in all desirable colors; pair **50c**

16-button length chamoisette gloves, at **50c to \$1.00**

Lisle and chamoisette gloves, in four colors, white and black; pair **25c**

Silk gloves, with double finger ends; pair **50c to \$1.50**

Dives, Pomeroy & Stewart—Street Floor.

## Shirts for Tennis, Golfing and Other Out Door Sports

A showing representative of the best styles produced for the forthcoming summer season.

Men's sports shirts in solid white or neat stripe patterns, with standard style or convertible high-low collar **\$1.00 to \$1.50**

Eagle outing shirts, with rolling collar of white and patented cuff which allows for freedom of the wrist **\$1.50**

French flannel shirts in solid colors and stripes; two military pockets **\$1.19 and \$1.50**

### SHIRTS FOR BOYS

Negligee styles with separate soft collar in white and stripes, sizes 12 to 14; each **50c**

Scout shirts with two flap military pockets and attached collar.

Shirts with separate collars in good grades of madras and soisette, **\$1.00**

Boys' all silk and part silk shirts with separate or attached collar **\$1.50 to \$3.25**

Boys' sports shirts with low adjustable collar, in grey, tan and white, **50c**

Dives, Pomeroy & Stewart—Men's Store.

## Swift's Sugar Cured Shoulders, Pound, 12½c

### 10 Pounds Granulated Sugar, 59c

300 Swift's mild sugar cured shoulders; average 5 lbs. each. Owing to the limited number to be sold none will be sent C. O. D. Special to-morrow, lb. **12½c**

With each \$1.00 purchase, not including shoulder special, we will sell 10 lbs. granulated sugar for **59c**

50 cases fancy solid packed tomatoes; extra large cans, 3 cans, 25c; dozen <b>50c</b>	"Flag" small rosebud beets; large tins of sweet red, ruby beets; Can, 18c; 6 cans <b>\$1.00</b>	Full cream cheese, lb. <b>25c</b>
20 cases Early sweet June peas, 3 cans, 25c; dozen <b>50c</b>	"Waldorf" pork and beans in tomato sauce, 3 regular 10c cans, 25c	English dairy variety, lb. <b>27c</b>
25 cases Dinner peas, No. 2 cans <b>4c</b>	Sugar cured bacon, strips weigh 3 to 4 lbs., lb. <b>25c</b>	Gorgonzola; the finest cheese imported from Italy, lb. <b>35c</b>
Fancy asparagus tips, tall tins, very tender, 2 cans <b>25c</b>	Sugar cured bacon, sliced any thickness, lb. <b>28c</b>	Sweitzer cheese, lb. <b>35c</b>
Choice tender asparagus, regular 20c cans, 18c; 6 cans <b>\$1.00</b>	Lebanon bologna, lb. <b>25c</b>	Imported Roquefort cheese, lb. <b>55c</b>
Del Monte asparagus tips, square cans, containing 30 spears, can, 22c; dozen <b>\$2.50</b>	Dauphin county bologna, lb. <b>23c</b>	Record coffee, a choice blend in one-lb. bag, lb. <b>25c</b>
Flag whole tomatoes, large size, the very finest packed, Can, 15c; dozen <b>\$1.70</b>	Lehigh bologna, lb. <b>23c</b>	Selection of fancy coffee carefully roasted; one-pound parchment bags, lb. <b>30c</b>
Maine corn, Can, 15c; dozen <b>\$1.70</b>	Country cured dried beef, ¼ lb. <b>10c</b>	Purity coffee; our very finest blend, 1-lb. can, lb. <b>30c</b>
	Luncheon loaf, lb. <b>25c</b>	"Senate" tea selected from the best crops and blended with the greatest care, lb. <b>65c</b>

Dives, Pomeroy & Stewart, Basement.