

PHOTOPLAY TO-DAY

Broadway-Star 3-reel Feature "The Enemies" Featuring EDITH STOREY, HARRY MOREY and HARRY NORTHROP.

Hear Our New \$25,000 Pipe Organ

played by Messrs. Malotte and McBride during the presentation of high character motion pictures. Capt. Swift will be shown Thursday.

COLONIAL

Here's the Place Now For Best VAUDEVILLE SEE THE Haberdashery Girls Monday, Tuesday, Wednesday And Shop at Their Country Store on Wednesday Evening.

Chestnut St. Auditorium, Monday Evening, April 12, at 8.15

THE REAL CONCERT EVENT OF THE SEASON Prima Donna Soprano ALICE NIELSEN Eminent Swiss Pianist RUDOLPH GANZ

Runaway June

The eleventh episode in motion pictures at the Royal Theater, Third Above Cumberland and at National Theater, Sixth and Dauphin

VICTORIA TO-DAY

ELEVENTH EPISODE RUNAWAY JUNE And the \$25,000 Hope-Jones Unit Orchestra Admission, 10c Children, 5c

MAJESTIC WILMER, VINCENT AND APPELL, MGRS.

TO-DAY AND TO-MORROW Wed. Evening Only, April 14 SEATS ON SALE. SOUSA AND HIS BAND THURSDAY, One Night Only, April 15. DAVID WARFIELD IN THE AUCTIONEER

COLONIAL THEATER

The collars worn by Messrs. Reynolds and Stutzman in that great big successful attraction "The Haberdashery" now appearing at the above theatre are two of the latest Ide Silver Collars SIDES & SIDES

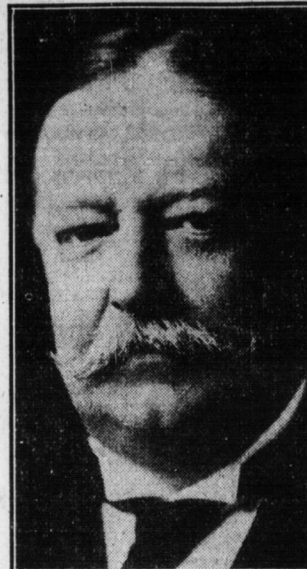
Try Telegraph Want Ads

WILSON'S TARIFF HIT BY GOVERNOR

State's Executive Gives His Views on the Subject of the Democrats' Measures

ARE WRONG IN PRINCIPLE

Dr. Brumbaugh Tells Where the National Administration Has Made Some Failures



William Howard Taft Will deliver his popular lecture, "The Signs of the Times," at the Technical High School auditorium, Thursday evening, April 15th, at 8 o'clock, under the auspices of the "Spectator" staff of the Harrisburg Academy.

Governor Martin G. Brumbaugh holds that Pennsylvania is vitally concerned with the national administration's failure to enforce the tariff law that will benefit the country and that there is no State that is more interested in making the Republican party successful at the coming presidential election.

"The State of Pennsylvania is more concerned in the success of the Republican party at the presidential election two years hence than any other Commonwealth in the United States," said Governor Brumbaugh.

"The Democratic tariff is an entirely wrong conception so far as it concerns the revenue problem. The expenses of the national government are constantly increasing, and the only method by which revenues under the present tariff can be made to meet the demands of the Government is by a sliding scale.

"The income tax has not in any way realized the expectations of even the Democratic party," continued the Governor. "This tax is a distinct assessment on the North, as opposed to the South. It is a tax on the great industries of the North and on the leaders of these industries, who had already been heavily taxed through the operation of the Underwood tariff law.

"The Underwood tariff act interferes with the markets of our industries, and in addition the Democrats effected an income tax which placed assessments upon those whose markets were destroyed by the new tariff schedule.

"The Republican party ought to win in the presidential campaign of 1916," the Governor said. "It is the only party that can give this country an industrial outlook which is stable and satisfactory to our working people. And the Republican party in my judgment will win at the presidential election, if it takes up in an effective way the great program of social legislation now before us. This program means in substance 'legislation for good citizens in a good physical environment.'

"Conservation means the health, comfort and happiness of the people. An individual should have an environment of health, comfort and happiness. His home should be cheerful, bright and wear an air reflecting the prosperity of the occupant. And as this individual has a cheerful atmosphere in his home living so should the people at large have a good physical atmosphere—an atmosphere of comfort and happiness.

"This environment serves to promote the efficiency of a citizen as an industrial unit, and likewise makes him worth more to himself and to society at large.

"The social program I have mentioned," continued the Governor, "includes the misfortunes of industrial workers which are not preventable. These misfortunes should be a charge upon the cost of production in industry."

"The Governor, of course, referred to the workmen's compensation bills, which come up for final passage in the House of Representatives to-night.

Governor Brumbaugh then discussed the opportunities of the Republican party in the Commonwealth. "Unless the Republican party in this State gives the people the legislation they so obviously want the party will not only lose the respect of the citizens of the Commonwealth, but the party will lose the support of the people of Pennsylvania. It is up to the Republican party in this State to take care of the people, and the time for the party to do this is all the time. It might almost be repeating an adage to say that if the Republican party of the State of Pennsylvania looks after the people who will look after the party."

Principal Committee Got Tips on School Buildings

During its four last week of the western part of the State in search of a successor to Principal W. S. Steele, of the Central high school, the special committee of the school board visited some of the latest and most modern grade and high school buildings in Pennsylvania. Incidentally, the committee got some excellent tips on high school construction and furnishings along the way that are being followed in western-State cities.

AMUSEMENTS

REGENT 12 Noon to 11 P. M. To-day and To-morrow. WILLIAM FARNUM as MARCUS in "The Sign of the Cross" by Wilson Barrrett.

Bowman's FOUNDED 1871 Soon Your Porch Will Be the Pastime of Leisurely Hours

Summer days are really "Porch Days" for it is there that many hours of yourself and family are spent. On the Porch you receive your friends and do your entertaining, and care should be exercised in the selection of furniture.

We shall appreciate your calling at our store to look over the various lines which we have on display. It's an extra fine selection at moderate prices. (See window)

Worthy of special note is the Kaltex Furniture which is practically indestructible, being made of the toughest fibre carefully put together by hand. Every detail is given thorough attention and the result is sound, substantial furniture that will successfully withstand hard knocks and rough usage.

Included in the showing are:



- Three-piece Fibre Suites, finished Baronnial brown, soft, rich tone; rustic effect; comfortable; substantially made; well appearing. Price is \$14.95
Large comfortable Fibre Rocker, in rustic effect, Baronnial brown finish. Price is \$2.75
Scotch Gray Suites—settee, arm chair and rocker; frame finished in beautiful dark gray; reed seats and backs, finished in white enamel. Price is \$19.95

Take Advantage of Greatly Lowered Prices in the Spring Sale of Wall Papers

Any room can be repapered in a beautiful effect to harmonize with the general surroundings, and the amount you intended spending for one room, will, in a number of instances, be sufficient for the repapering of two. Note the savings.

- 50 to 75c Wall Papers—grass cloths, imported oatmeal stripes, metallic grounds and aero-chrome blends, at roll, 27c
22c to 35c Wall Papers—shadow stripes, cretonnes, floral effects, satin embossed and Jaspé lined designs; beautifully arranged for bedrooms, living rooms, parlors, and reception halls; cut-out borders to match; roll 12c
30c Washable Tiles, with binders to match, roll 16c
18c 30-inch Sun Fast Oat Meal Papers, popular shades, with cut-out borders to match, at roll 9c
15c Bedroom Wall Papers, in a good assortment of colors and designs, with borders to match, at roll 6c
10c Bedroom and Hall Papers, in choice patterns, with borders to match, at roll 5c

Grass Rugs Will Lighten the Burden of Summer Cleaning

For this reason alone, in many homes they are used exclusively instead of heavy wool rugs.

Besides, they're cooler, and always give the room a pleasing freshness. Excellent for porch use.

- Well made—strong and durable.
Willow Grass Rugs—9x12, at \$5.69 and \$6.48.
"Crex" Grass Rugs—figured borders; 12x15, at \$15.98; 9x15, at \$10.98; 9x12, at \$7.95; 8x10, at \$6.45; 8x12, at \$7.50; 6x9, at \$3.98; 4.6x7.6, at \$1.69; 36x72, at \$1.35; 27x54, at 75c; 18x36, at 35c.
Crex Stair Carpet and Hall Runners—18-inch, at 29c yd.; 24-inch, at 35c yd.; 27-inch, at 39c yd.; 36-inch, at 45c yd.; 54-inch, at 75c yd.; 72-inch, at 95c yd.
Japanese Matting Rugs—6x9, at \$1.50; 27x54, at 19c; 36x72, at 39c.
Pattern woven throughout—27x54, at 29c; 36x72, at 49c.

Starting the Week With Timely Domestic Specials

- Bleached Muslin, 7 1/2c yd.—regularly 10c; 36 inches wide; cut from full pieces.
Oatmeal Flannel, 8c yd.—regularly 12 1/2c; 36 inches wide; remnant lengths.
Sheets, at 35c each, or 3 for \$1—center seam; laundered; 3-inch hem; 72x90 inches.
Cretonnes, 8 1/2c yd.—regularly 12 1/2c; cut from full pieces.
Bleached Pillow Cases, 9c ea.—3-inch hems; 42x36 and 45x36 inches.
Challies, 4 1/2c yd.—in Persian and Oriental designs; fine for summer drapery.
Bleached Muslin, 5c yd.—regularly 7c; 36 inches wide.
Dress Gingham, 5 1/2c yd.—regularly 8c; striped and plaids.
Main Floor—BOWMAN'S



No Floor Coverings Is as Lasting as Linoleum

For kitchens, bedrooms, vestibules, bathrooms, as well as offices, churches and club rooms, it will give years and years of hard service. Where rugs are used it answers the purpose of stained floors and gives a hardwood effect.

The illustration shows an always popular design which can be secured in a variety of colors; both inlaid and printed (also in oil cloth).

- Inlaid Linoleums—colors run through to the burlap foundation, and years after being laid, the colors are still fresh and bright. Various tile and conventional designs to choose from. \$1.15, \$1.25 and \$1.30 sq. yd.
New Process Linoleums—made and printed under an improved process; not affected by heat or moisture; can be used outside the house as well as inside. Extra heavy quality, 49c sq. yd.; regular quality, 39c sq. yd.
Cork Carpet, "A" Quality—an excellent floor covering—deadens the sound of walking; 2 yards wide; regularly \$1.00. Square yard 69c
Linoleum Remnants—useful lengths for vestibule or bathroom; sq. yd. 29c

PUBLIC SERVICE BILLS CONSIDERED

Special Committee Is Giving Study to the Various Measures Introduced Thus Far

All bills relating to the public service company law of 1913 will be considered by a subcommittee of the House committee on judiciary general. There are almost twenty bills relating to the law, several of them having been drafted by the commission's attorneys and others by the League of Pennsylvania Boroughs and other organizations. A special day is to be given by the committee to consideration of the bills when acted upon by the subcommittee.

SCHOOLS IN NEED OF MORE MILLIONS

Dr. Becht Points Out That No Increase Has Been Made in Appropriation in Years

A campaign in behalf of a larger appropriation for the schools of the State has been launched by the State Board of Education, of which Governor Brumbaugh was a member until he became the chief executive. The State appropriation, it is pointed out in a letter issued by Dr. J. George Becht, the executive secretary, is the same as it was eight years ago and that the school population and expenses have grown.

MEMORIAL MONEY GOES TO CHARITY

Harrisburg Lodge, No. 107, Loyal Order of Moose yesterday held its annual lodge of sorrow for the members who died during the past year. The services took place in the Moose Home at Third and Boas streets, and the principal address of the program was delivered by District Attorney Michael E. Stroup.

FATIMA THE TURKISH BLEND Cigarette 20 for 15c. When you buy cigarettes today, why not try the brand that well-to-do men prefer to any of the costly makes, just for its goodness.