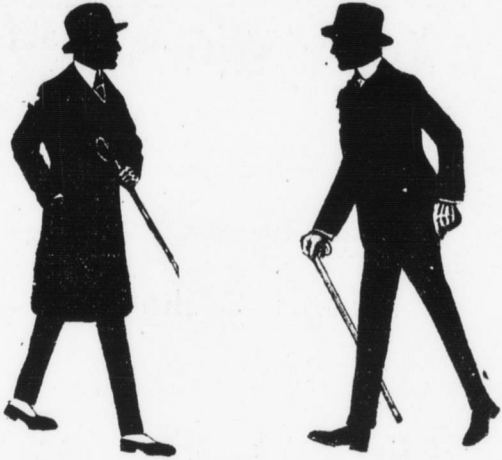


# These Are Busy Days Preparing Folks for April 4th

## Bowman's

Call 1991—Any Phone

Founded 1871



### Quality in Style Clothes Is Our Watchword

To the average hustle and bustle, always-on-the-jump man, who can appropriate only a meager portion of his busy-ness each season to buying clothes, there is satisfaction in placing confidence in this "quality first" store—a Men's Store in complete isolation from other departments.

As to style and smartness of pattern, you only need glance at our window displays and make comparisons.

Complete showing of suits for men and young men of all dimensions

**\$9.90, \$12.50, \$15.00, \$18.00, \$20** —and upward

### Spring Top Coats

Tweeds and homespuns, in tan and gray, with velvet collar; form fitting; silk yoke and sleeve linings, at **\$15.00**

The new Covert Cloth Top Coat, in both full back and form fitting models; silk shoulder and sleeve linings, at **\$18.00**

For conservative dressers, it's the Chesterfield model in black, oxford and gray, either cloth or silk faced, at **\$10.00, \$12.50, \$15.00, \$17.50 and \$20.00**

### It's Time, Men, You're Stocking Up With Needed Spring Furnishings

Men's Silk Shirts, at **\$3.00 and \$3.98**—coat style, with French cuffs; new Spring patterns.  
Men's Dress Shirts, at **\$1.00**—percales; coat style, with attached cuffs; new Spring patterns.  
Men's White Shirts, at **\$1.00**—plain and pleated; coat style, with attached cuffs.  
Men's Silk Neckwear, at **50c**—4-in-hands, wide open ends.

Monito Half Hose—double soles, and high spliced heels. Silk lisle, at **25c pr.**; thread silk, at **50c pr.**  
Boys' "Kaynee" Blouse Waists, at **50c**—madras, in plain colors, and neat stripes; military collar.  
Boys' reas shirts, at **\$1.00**—mercerized madras; coat style; new Spring patterns.

Main Floor—BOWMAN'S.

### Clean-Up Lots From the Sale of Housefurnishings LOWERED IN PRICE

Dust Mops, **39c** — regularly **69c**—for dusting walls and wood-work; with handle.

Bathroom Mirror, **\$1.23**—regularly **\$1.98**—with 12½-inch glass shelf and towel bar combination attached.

American Thermos Bottle, **83c** — regularly **\$1.50** — corrugated nickel case, pint size.

Aluminum Dinner Pail, **89c** — regularly **\$1.69** — oval shape.

BOWMAN'S Basement.

Sewing Trays, **\$1.23** — regularly **\$1.98**—mahogany finished; oval or oblong; with glass center.

Aluminum Berlin Kettle, **69c** — regularly **98c** — with aluminum cover; limited quantity.

Aluminum Tea Kettles, **\$1.98** — regularly **\$2.98 to \$3.98**—sizes No. 8 and 9. Limited quantity.

Aluminum Berlin Kettle, **89c** — regularly **\$1.49** — with aluminum cover.

BOWMAN'S Basement.

### Open Stock Dinnerware at One-Half Regular Price

Johnson Bros. English Porcelain — spray decoration.

**\$2.50** doz. cups and saucers, at **\$1.25** doz.  
**\$1.50** doz. plates, at **75c** doz.  
**\$2.10** doz. plates, at **\$1.05** doz.  
**\$2.50** doz. plates, at **\$1.25** doz.  
**\$1.50** covered dish, at **75c**  
**\$2.00** doz. bone dishes, at **\$1.00** doz.  
**80c** meat platters, at **40c**  
**50c** meat platters, at **25c**  
**30c** meat platters, at **15c**  
**40c** meat platters, at **20c**  
**40c** sauce dishes, at **20c**  
**40c** sauce dishes, at **20c**

English Porcelain — neat border decoration.

**\$3.00** doz. cups and saucers, at **\$1.50** doz.  
**\$1.50** doz. plates, at **75c** doz.  
**\$1.80** doz. plates, at **90c** doz.  
**\$2.20** doz. plates, at **\$1.10** doz.  
**\$2.50** doz. plates, at **\$1.30** doz.  
**\$1.10** doz. fruit saucers, at **85c**  
**\$1.70** covered dishes, at **85c**  
**90c** meat platters, at **45c**  
**60c** meat platters, at **30c**  
**40c** meat platters, at **20c**  
**70c** doz. individual butters, at **35c** doz.  
**40c** sauce dishes, at **20c**  
**30c** sauce dishes, at **15c**

BOWMAN'S Basement.



### Correct Easter Coiffures Hair Goods Moderately Priced

The new goods are here—particularly wavy switches and transformations—the kind so necessary to a smart headress. Your shade is here—and as to prices, these specials demonstrate our low price supremacy:

Wavy hair switches, 20 inches long, gray hair switches, 20 inches long, all around wavy transformations, and all around gray transformations, all special at **\$1.45** each.

Combing — we'll make them into a switch or transformation for **\$1.25**

Second Floor—BOWMAN'S

### Trim Footwear

#### For Milady's Dainty Feet

Fashion having decreed shorter skirts, shoes have grown dressier, prettier, ever more graceful. Military effects are much in favor, in both high and low shoes.

All the smartest styles are here, for instance—

Women's Genuine / French Bronze Military Laced Boots, with cloth tops to match, at **\$6.00**

Women's Cloth Top Military Laced and Button Boots, in gray, fawn, sand and putty shades, at **\$3.50 and \$4.00**

Women's "Peg O' My Heart" Pumps, of gun metal and patent colt, at **\$3.50**

Third Floor—BOWMAN'S.

### Four Popular Spring Silks, Specially Priced

They're lower in price because we purchased all the manufacturer had of each weave.

Black Chiffon Taffeta, **\$1.00** yd. — value **\$1.50** — 36 inches wide; fine quality; soft finish.

Merry Widow Taffeta, **\$1.75** yd. — value **\$2.00** — 40 inches wide; in Russian green, Battle-ship gray, wistaria, navy, black and ivory. Very special.

Panne Crepes and Crepe de Chines, **\$1.09** yd. — values **\$1.25 and \$1.50** — 40 inches wide; street and evening shades.

Black Satin Messaline, **\$1.00** yd. — value **\$1.25** — special quality; fine texture; lustrous black; blue star edge. Made in U. S. A.

Main Floor—BOWMAN'S.

### Combination Toilet Offer, at \$1.00

Including a bottle of toilet water, value **\$1.00**, and a jar of sachet body talcum, value **50c** — total value, **\$1.50**; combination special at **\$1.00**. Toilet water comes in Violet Simplicity, Garden of Allah, and Siren Lilac.

Main Floor—BOWMAN'S

### Children's Easter Shoes Are Ready in Delightful Profusion

The fawn top overgaiter boots for little girls have just arrived, and it'll tickle the youngsters all over to have shoes like "ma."

Prices are **.... \$2.25 and \$2.50**

Third Floor—BOWMAN'S

### New Receiving of Acme Dress Forms

Adjustable at neck, waist, bust, hips, shoulders, skirt, etc. Three styles, at **\$5.00, \$10.00 and \$12.50**.

The "Kompact" form with collapsible skirt, comes at **\$3.50**

Main Floor—BOWMAN'S

### From Holland

We have just received a bill of lading for rose bushes and plants now coming over on the "Rotterdam." They'll be here soon and reservations can be made if desired.

See the Demonstration of

## Eldredge Two-Spool Rotary Sewing Machines

Tomorrow only, by an expert

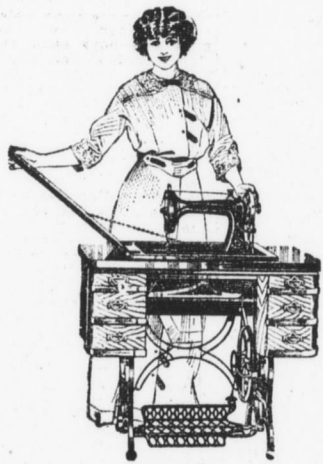
Every housewife and modiste should see this greatest improvement in sewing machine construction, as it marks without doubt, the most notable advancement in sewing machine perfection.

You sew direct with two spools of thread. The second spool answers the purpose of the shuttle, and in this way you are not annoyed by the lower thread running out unexpectedly in the middle of a seam, as the amount indicated by that on the spool pin.

### \$1.00 Places a Machine in Your Home

This dollar entitles you to membership in the Eldredge Club, and no other amount is required on deposit. Then you pay it off in weekly payments of **\$1.00**.

In addition to the Eldredge, you may secure a Paveway, at **\$12.98**; Bowman A No. 1, at **\$19.50**; Vindex, at **\$25.00**, or the Eldredge-Rotary, at **\$37.00**—and save the agents' commission. All machines guaranteed for 10 years.



Fifth Floor—BOWMAN'S.



## Millinery of Highest Merit In Beauty and Correctness of Style

That is what gives Bowman Millinery a certain distinction so hard to find in the Millinery masses.

The thought of being the first to show new styles, is constantly in the minds of our chiefs who make it a point to keep our department right beside the leading New York shops in the race for Style supremacy.

### Hats Trimmed to Your Order

We're showing at present, about fifteen different braids in un-trimmed hats, and shapes in a variety, upwards of two hundred. Prices range all the way from **95c to \$10.00**

Among the most recent, and sure to gain immediate favor, are pink teal pokes with black facing—coral pink lissire—fine, large, black leghorns — and a host of others.

Second Floor—BOWMAN'S.

## The Coat Store of Harrisburg



These are not the exact words, but it's a pleasure to hear it said day after day—why, almost customer after customer. And it's no little pride we possess in this long sought title.

The fact that we're living up to it is provable in the assortment that we've prepared for Saturday.

Note that we exert every effort to abandon duplicates, so far as possible, showing only one or two of a kind.

Covert Coats .. **\$7.50 to \$25**  
Khaki Coats .... **\$10 to \$25**  
Check Coats ... **\$6.50 to \$35**  
Tweed Coats .... **\$10 to \$20**  
Novelty Coats .. **\$5.98 to \$20**  
Silk Faille and Poplin Coats, .. **\$25 to \$50**

White Chinchilla Coats — pure wool — **\$12.50, \$15.00 and \$20.00.**

Black and navy Poplin Coats—unlined, half lined and lined throughout, **\$10, \$12.50, \$15 and \$17.50.**

Second Floor—BOWMAN'S.

## Spring Suit Styles Are Growing in Favor

Since fashions are fully established and extremes "weeded out," Harrisburg women are taking kindly to the new modes that besuit their tastes—that are better adopted to American moderation in dress.

We would welcome an opportunity to show you the newest and smartest, and efficient sales-

people will assure the most becoming. Popular are:

Serge, Poplin and Gabardine Suits, at **\$15, \$17.50 and \$20**

Poplin, Imported Gabardine and Novelty Suits, at **\$25 to \$35**

Imported Silk Faille, Imported Silk Poplin, fine Gabardine and Poplin Suits, at **\$25, \$30, \$35, \$37.50, \$39.50 and up to \$50**

Second Floor—BOWMAN'S.

## Boys' Easter Suits Are Ready

More than twenty-five different patterns and models in Norfolk, at **\$1.98, \$2.50, \$2.98, \$3.98, and up to \$12.50.**

Novelty Serge Suits—sizes 2½ to 10 years, at **\$2.98 to \$5.00**

Washable Suits—sizes 2½ to 10 years, Oliver Twists, Middies, French Blouses, Vestees, etc., at **50c to \$3.98.**

Boys' Spring Top Coats—Reefers and Balmacaans, in shepherd checks, serges and homespuns: sizes 2 to 10 years, at **\$2.98, \$3.50, \$3.98, \$4.95 and \$5.95**



## Dainty and Charming Are Spring Things For Children

Youth and Springtime go hand in hand, and bright, pretty clothes is the symbol.

It will be a great satisfaction for mothers to select their children's and infants' apparel from this large assemblage — so extensive are the stocks—so new and beautiful are the styles, and right.

Children's White Dresses—fine lawns, organdies, and net, trimmed with dainty lace and insertion; long waist effects with double skirts, with hand embroidery or high waist effects with soft belts of pink or blue ribbon; sizes 2 to 14 years. Prices range from **98c to \$9.00**

Children's Dresses — gingham, percale and chambray dresses, in a large variety of styles; long waist and high belted effects; flat collars of white pique, and plain colors; sizes 2 to 14 years. Prices are **98c to \$5.98**

Children's Coats—in shepherd checks, serges, silk poplins, and

broadcloth, in high waist models, with fine white pique, lace and hand embroidered collars; trimmed with ribbon, velvet and fancy buttons; sizes 2 to 7 years. Prices are **\$2.50 to \$9.00**

Infants' Coats—short white coats, in serge, cashmere and crepe, with fancy silk collar and cuffs, and hand embroidered; sizes 6 months to 3 years. Prices are **\$1.50 to \$6**

Infants' Coats and Capes—long white coats and capes, in cashmere and serge, trimmed with silk and embroidery. Prices range from **\$1.50 to \$10.00**

Second Floor—BOWMAN'S.

## Three Drapery Dept. Specials For Saturday

**\$2.50 to \$4.75** Lace Curtains — novelty, net, cluny and lace curtains, trimmed in braid, and cluny laces; hemmed; 2½ and 3 yards long, 2 to 5 pair of a kind. Prices are **.. \$2.00 to \$3.50 pr.**

20c to 39c Curtain Material Remnants — scrim, marquisettes and fancy voiles; in lengths from 2 to 7½ yards; yard, **14c**

Armure Remnants — 50 inches wide; in red, brown, green and rose; 1½ to 2½ yards long; values up to **65c**; yard **33c**

Fourth Floor—BOWMAN'S.

## Women's French Kid Gloves, \$1.50 and \$2.25 Pr.

Black with white embroidery, and white with black embroidery; 2-clasp.

Chamoisette Gloves—long and short, at **50c, 75c, \$1.00 and \$1.25 pr.**

Silk Gloves — complete new line, in plain and contrasting embroidery, **50c to \$2.00 pr.**

Main Floor—BOWMAN'S.