

HUDSON
Six-40
\$1550
7-Passenger Phaeton
3-Passenger Roadster

Every Extra Pound Is a Crudity

The HUDSON Six-40 is the lightest 7-passenger Six ever built. Most of its newer rivals weight 400 to 600 pounds more.

That is one evidence of HUDSON refinement. It is one result of our four-year evolution. It is one of the benefits from Howard E. Coffin's designing.

No man can say, "It's too light."

Over 10,000 of these cars have proved themselves under every road condition. Half of them have run for two seasons. They have covered, all told, at least 25 million miles. And those 10,000 owners, near and far, will say that this car is right.

Heavier cars of like capacity are cruder in some way. They may use less aluminum, less pressed steel. The difference may lie in the motor type. It may lie in less skillful designing.

The HUDSON Six-40 weighs 2890 pounds, ready for the road. A car of this type which weighs more is not of equal class.

The HUDSON shows the Light Six as it will be. All excess weight, which adds to fuel cost and tire cost, must be eliminated to meet the demands of the times.

And the HUDSON shows how the Light Six will look after the years of refinement which the HUDSON has had. This finish, this beauty, this perfect detail will be Light Six requirements.

This proved-out car offers many attractions to men who don't wish to take risks. And its very appearance will show its leadership.

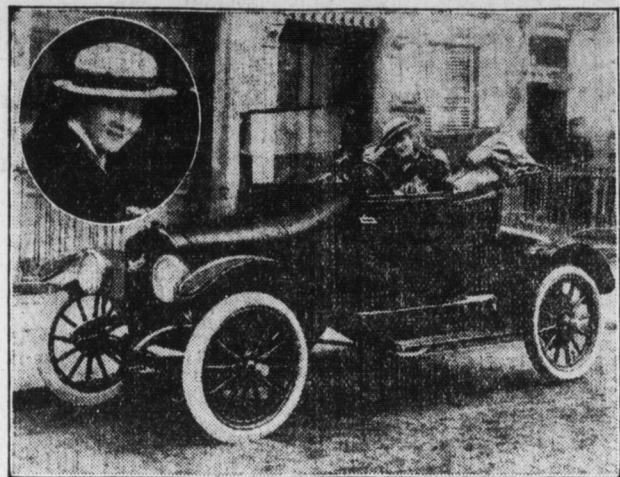
There goes with it HUDSON service, which is less copied than the car. You will be surprised when we explain to you what this service covers.

We invite investigators.

HUDSON MOTOR CAR CO., Detroit, Mich.

I. W. DILL, Harrisburg, Pa.
At the Sixth Annual Auto Show, Arena, Rex Building

Mary Pickford Drives Her Own Car



The above photograph of Mary Pickford, famous Motion Picture Star, was taken as she started out from her studio in her recently purchased Maxwell Cabriolet. Miss Pickford is an expert driver and thoroughly enjoys her rides to and from the studio and after hours.

Saxon Company Methods That Insure Accuracy

The Saxon Motor Company has just instituted a plan that provides a double check in assuring quality of materials and high grade of workmanship in Saxon motor cars.

In addition to a perfected scheme of inspection at the Saxon factory in Detroit, this concern has gone a step farther than is customary among automobile makers. By the new plan, expert inspectors will be assigned to the different plants where the parts and materials for use in Saxon cars are produced. It is the duty of each inspector to see that such parts and materials exactly measure up to the specifications called for by the Saxon engineers.

This advanced and progressive plan has been put into effect by the Saxon Company at a considerable expense, but it is declared to more than pay for itself in eliminating the chance for error in construction and preventing any inferior materials from getting by.

"Just as double entry bookkeeping is considered better than the old single entry style, so double checking in the building of automobiles has every advantage over a single checking system," says C. C. Cross, the Saxon factory manager, in telling of this revolutionary plan.

"If a mechanical part or a piece of material is inspected in its early stages, and then again before it finds a place in the finished product, a quality motor car is the assured result."

"The inspection of our cars will not be confined to an inspection before the cars are shipped, but under the direction of the chief inspector, who is one of the most expert experimental engineers in the country, a number of deputies will be placed in the various plants where the company buys parts. All parts will be inspected before shipment to the Saxon factory. This method is a guarantee to our customers that our product is right."

International Models Show Simple Heavy Duty Motor

The new Models "E" and "M" shown at the motor truck department represent the most advanced type in motor trucks for quick delivery, and incorporate features that protect the purchasers against possible delays.

The International has a very simple, powerful and compact heavy-duty motor, and upon this depends the efficiency of the complete machine. The International Motor Trucks are made in capacities of 1,000, 1,500 and 2,000 pounds.

It is a well founded fact that the firms delivering heavy loads were the first to adopt motor trucks, because the savings to them was so enormously in favor of motor trucks. We have reached the period when the light and medium capacity unit truck is being more fully appreciated. The most reliable authorities agree that about eighty per cent. of the motor truck demand is for the small unit trucks as now being specialized by the International Motor Truck Department.

The large unit trucks are an engineering proposition and should be loaded to their capacity both ways on their trips on account of their dead weight. With the smaller units the first cost is less and the upkeep expense lower. Several smaller units in place of the large one are now being generally adopted, and kept in constant service.

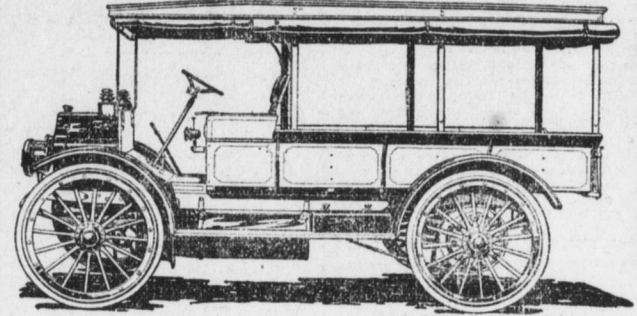
The ratio of the load to the truck should be maintained as nearly as possible at all times, and the solution is greatly in favor of the small unit truck because they increase this ratio, which means greater profit to the owner of the several small unit trucks. Many visitors are inspecting the new models at 619 Walnut street.

OUT OF STREAM WITH SELF-STARTER

Henry Kennedy, formerly a citizen of Owensburg, Ky., and later manager of the Studebaker branch at Oklahoma City, recently had a rabbit hunting experience in Australia, which, strange as it may seem, tested the efficiency of the Studebaker starter. Kennedy, who is now managing director of the Studebaker distributing house at Sydney, started out with four companions to hunt rabbits, using a Studebaker Six.

In attempting to ford a hollow during a rain, the carburetor became submerged in water which was going through so swiftly that none of the occupants dared get out of the car. The water kept rising inch by inch until the party feared they would be washed away. During a lull in the storm, Kennedy put the car into low gear, threw on the self-starter and was able to pull out of the deep hole. The carburetor was then drained and the engine immediately fired evenly, taking the party back to Sydney without further mishap.

Make Your Deliveries With An International Motor Truck



If you have not seen the International Motor Trucks now on exhibition at the newly established department, 619 Walnut street, go to-day and inspect them.

The 1915 International Models represent all that is best, most reliable and most popular in trucks for medium hauling and quick deliveries.

The International is backed by an organization of more than seventy-five years' experience in manufacturing. Every car sold is backed by International service, which means much to purchasers of motor trucks.

Come in and tell us about your delivery problems. We can help you.

International Harvester Co. of America
(Incorporated)
MOTOR TRUCK DEPARTMENT, 619 WALNUT ST.
OTHER BRANCH HOUSES AT PITTSBURGH, PHILADELPHIA, ELMIRA, BALTIMORE AND PARKERSBURG.

Buick
and
CHEVROLET
Motor Cars
At the Automobile Show
Kelker St. Hall
Hottenstein & Zech

METZ "25"
The Quality Car
\$600

Touring Model, Equipped Complete, including Gray & Davis Electric Starter and Electric Lights.

This new Metz Touring Model is just as interesting to DEALERS as it is to prospective purchasers. It means bigger sales, more customers, and ALL of them satisfied.

In addition to complete electric system, equipment includes rain-splash, built-in windshield, instant one-man top, heavy tufted upholstery, deep cushions, 32-inch wheels, 3 1/2-inch Goodrich clincher tires, Bosch magneto, Hyatt roller bearings, built-in gasoline gauge, speedometer, signal horn, etc.

Metz Roadster \$495, Equipped Complete

This new four-door model of the powerful METZ Roadster appeals to your appreciation of quality. It appeals to the man who wants the most for his money. It is extremely economical in operation, strikingly graceful and handsome in appearance, and in road performance and hill-climbing ability it has no superior at any price or in any class.

Metz Sales Co.
SEVENTEENTH AND SWATARA STREETS
GARAGE: Thompson Avenue, between Fourteenth and Fifteen Sts.

THE KING EIGHT-CYLINDER

King Car Sales Co., Distributors, 80-88 South Cameron Street.

Notes and Comments From Kelker St. Hall Auto Show

William T. Taylor, distributor for the Apperson cars in the East is in Harrisburg during show week negotiating for a representative for this territory. The Apperson car is a pioneer in motor cars and the new model 6-45 at \$1,485 has the refinements and class that was needed to make the car a winner, which in other respects has proven itself mechanically among the best in its class.

A Pullman small model was sold by the Bentz-Landis Auto Company. An increasing number of these are being bought since the model 21, which began pushing the classy little car in this section.

The Mitchell chassis shown by Beam & Son is an exact duplicate of the car that matched the sealed bonnet run of 7,518.4 miles in thirty days, an average of 250 miles per day.

The Winton exhibit is in charge of C. E. Klinger, well known locally. Winton's surprise for the year is a new six-cylinder model 21A, in four or five-passenger form and showing general chassis design like the model 21, which is continued practically unchanged with the exception of the body, which is a redesignable one. Thus the Winton Company has abandoned its one chassis policy to which it has adhered for five years. The new six is somewhat smaller than the model 21. The wheelbase is 128 inches and the motor, which has its valve gear in pairs like the other Winton models, is 3 1/2 x 5 1/4.

The Hupmobile business is reported by C. C. Ensminger to be more prosperous than at any previous time since his entry into the automobile business, and that is a number of years. Several sales have been made and the new line of the 1915 models are attracting a great deal of attention.

MITCHELL SCHOOL FOR AUTOISTS

A novel and well received educational school for auto dealers and enthusiasts was held during the Omaha Auto Show by the Mitchell Motor Company of Omaha.

Their large garage was turned into a lecture room with blackboards mounted on the walls and all dealers and auto owners extended invitations to the lectures, which were held each morning of the show from 9 to 12 o'clock.

The representatives of the various electric starting device manufacturers were invited to speak to the visitors, display their starters, and explain the principle and construction by use of the blackboard.

The interest was manifest. The garage was crowded every morning by Mitchell and other dealers. Owners were as numerous as dealers and the result was that practically every one attending left with a better knowledge of the electric equipment on a modern automobile than could ever be gained from a mass of literature.

The attendance and the interest of every visitor tends to further emphasize the necessity for educational work of this kind among the dealers who have the owner's interest at heart, and the owners who really want to understand and take intelligent care of the car he owns.

There are 193 manufacturing departments in the Studebaker automobile factories.

Two hundred and fifty young women are employed to make Studebaker automobile tops and side curtains.

So great is the popularity of the jitney bus, that fifteen were sold in Kansas City in one week by the Studebaker Corporation.

Stanley Steam Cars

5-PASSENGER 20 H. P. TOURING

A large, roomy, comfortable 5-passenger, 20-horsepower touring car, with 130-inch wheelbase, 150 to 200 miles on a filling of water, hand-made aluminum body, deep upholstery, one-man top, clear vision, rain-splash windshield, mud-guard, clear running boards, electric lights with dynamo and storage battery. No clutch to work. No change speed lever. Entire control is governed by the brakes and a single little throttle lever on the steering wheel. \$1075 f. o. b. Newton, Mass.

PAUL D. MESSNER
1118 JAMES STREET

AUTO Radiators, Lamps, and Windshields
Repaired, Replated & Enameled

The Nuss Mfg. Co.
Harrisburg, Pa.

PAIGE

4 "36" 5-Passenger Touring	\$1075
6-46 7-Passenger Touring	\$1395

F. O. B. Detroit

See Them at the Arena
The Sixth Annual Automobile Show
RIVERSIDE GARAGE
BELL PHONE 3731R
GEORGE R. BENTLEY, Proprietor

C. A. Fair Carriage & Auto Works
Manufacturers of Special Commercial, Auto Truck Bodies, Tops, Etc.
Pleasure Auto Seat Covers, Tailor Made.
Rubber Tiring in All Its Phases.
Auto Spring Work Done Promptly by Skilled Mechanics.
EAST END MULBERRY STREET BRIDGE
HARRISBURG, PA.

HOLMES SEEDS

Prices have not been advanced on account of the European War. Our importations were made early last fall, on contracts signed before the war broke out, which enables us to offer the same low prices that prevailed a year ago.

Tested Seeds of "Known Vitality and Purity" are the kind to sow. We have them. Be sociable. Call and get acquainted. Everything for the Garden, Lawn and Farm, including implements of all descriptions.

HOLMES SEED CO.
106 and 108 South Second Street

High School Programs
--FOR--
1915

We have, this Spring, an exceptionally attractive line of samples of Printed and Engraved High School Invitations and Programs. Class members and chairmen of committees are urged to get in touch with our Sales Department at once as the supply is limited and orders should be placed promptly to insure early delivery.

The Telegraph Printing Co.
Printing--Binding--Designing--Photo-Engraving
HARRISBURG, PA.

MYERS, THE TIRE MAN

DISTRIBUTORS FOR UNITED STATES AND GOOD-YEAR SOLID AND PNEUMATIC TIRES

Tire repairing of all kinds. Located in new building equipped with latest improved machinery. Have ample and every facility to take care of autoists' needs in most approved fashion.

Cameron and Mulberry Streets

Who WILL HAVE THE AGENCY? **When** WILL THE CAR BE HERE?

FRANKLIN

100 MILES ON LOW GEAR
By 116 Franklin 6-30 Models in One Day