

**Compare Quality—  
Compare Prices**

When you can buy Firestone Tires and Tubes at these prices, you can't afford to use any other make.

**When Choosing Tires  
Be Sure to Get These  
Inbuilt Extras**



	Case Round Tread	Case Non-Skid	Grey Tube	Red Tube
30x3	9.40	10.55	2.20	2.50
30x3½	11.90	13.35	2.60	2.90
32x3½	13.75	15.40	2.70	3.05
34x4	19.90	22.30	3.90	4.40
34x4½	27.30	30.55	4.80	5.40
36x4½	28.70	32.15	5.00	5.65
37x5	35.55	39.80	5.95	6.70
38x5½	46.00	51.50	6.75	7.55

Firestone Tires and Tubes are made by specialists—high quality, low cost.

Made in America's largest, most efficient, exclusive tire factory—high quality, low cost.

Delivered to car-owners everywhere through the most complete, efficient, ECONOMIC distributing system ever established—high quality, low cost.

Buy Firestones for Most Miles per Dollar

THE TIRE SHOP—108 Market street, Harrisburg, Pa., Distributors for Firestone Tire and Rubber Company, Akron, Ohio, "America's Largest, Exclusive Tire and Rim Makers."

# Firestone

**Dodge Brothers Had Every Confidence in the Future**

Back of the interesting manner in which Dodge Brothers introduced their new car to the public and entered the lists as full-fledged automobile manufacturers, is a story of unlimited faith in the future of the automobile industry that has seldom had a parallel.

Just ten years ago Dodge Brothers received an order from one of the pioneer Detroit companies, then tasting its first measure of success, for 3,000 transmission sets, including gears completely assembled. This was the first really large order placed with a parts manufacturer in the history of the industry. The factory of these two master-mechanics of that day was a one-story affair covering less than an acre of floor space, and 200 men were employed. With the profits from this and other orders of rapidly increasing size, the small parts manufacturers decided to expand. More room was required and larger quarters were secured.

In 1913 Dodge Brothers' factory consisted of close to twenty acres of floor space, and the vital parts for over 200,000 motor cars were turned out within twelve months. And the business grew to a point where it involved contracts amounting to a million and a half dollars per month. To abandon a profitable enterprise of these proportions to embark as manufacturers of an automobile to be sold under their own name, called for confidence and a belief in the future of the automobile industry that has seldom been equalled in any line of endeavor. Before any part of the public were acquainted with their intentions, Dodge Brothers issued orders for a building 1,000 feet long and four stories high. They knew that to successfully market a new motor-car production in quantity was absolutely necessary. So a building was erected, big enough, as one architect described it, "to assemble all the motor cars made in America." The next year of additional floor space for further parts production was needed. Again the architects were called in, orders were issued, and another building, 400 feet long, 77 feet wide, and four stories high, is now in completion.

Here then is an investment close to two millions in buildings alone, made before a single car was turned out. Another half million dollars' worth of machinery has been added without disturbing the work-a-day functions of the organization.

**Seen and Overheard at Arena Auto Show**

William C. Robinson & Son Co. have a complete exhibit of oils in the various grades required for automobile purposes. This exhibit is in charge of Don Miller, assisted by T. C. W. Hobbs.

The City Auto Supply Company is showing a Ford cow dash, Stewart horn, Halladay shock-absorbers, Sanford tire pumps that apply to Buick, Maxwell, Overland, Dodge Brothers and Ford motor cars.

An exhibition of Swiss ivory novelties is of interest because of the beautiful and delicately carved articles that can be made from ivory.

Pennsylvania Woman Suffrage Association believe in advertising their cause, as is evidenced by the abundance of literature that is there for the enlightenment of those who are undecided or indifferent regarding the right of women to vote.

Frank B. Bosch is there as usual with arguments and facts innumerable regarding the merits of Miller's. These tires are there to back up his assertions and a varied assortment of Miller tire sundries and other useful small articles for the motorist. Retreads from the Sterling Auto Tire Company are shown as examples of tire repairing.

The Keystone Grease in the transmission case is another familiar feature of local shows. E. C. Huhn is in charge, assisted by J. H. Wade. The first sale of the show was reported by Mr. Huhn, not a can, but a whole barrel of grease.

The "One-in-One" compression-proof piston rings are being demonstrated by J. G. Haas, of the Square Deal Auto Supply. Three separate rings are so constructed and ground that they may expand or contract and be replaced separately.

The Saxon door prize was all primed up with silk ribbons and is inspected and admired by all who pass down the aisle.

Wonderful little mechanical contraptions that add to the efficiency of the car or convenience of those who ride are objects of interest at almost every exhibit.

H. H. Beeman, factory representative for the Overland Company, is at the Redmond exhibit, and Albert W. Strub is assisting in the demonstration of the Overland and Chandler models.

"It's Insurance" — Essick and his Aetna is again on the job reminding the motorist as to the advisability of preparing for possible emergency. The exhibit is in charge of W. S. Hoover, assisted by Joseph B. Metzgar and Oscar Cohen.

You can't miss the Herff-Brooks exhibit. All you have to do is to look for the cars in the gayest of colors. A roadster in a beautiful red and a six touring in light green is a magnet for all who are not color-blind. Will they sell? James Kipp says that, not only these, but several others of the same kind are sold now. A lot of people prefer to get something different from the usual standard colors. The chassis of the new "25" just being introduced as a new model is featured at this display.

Seeing the wheels go round. There is a certain fascination in seeing something moving steadily and quietly. The Hudson Six operated by electric motor attracts attention because of this feature as well as because of its beauty of body lines. Mr. Dill has two checks as evidence sufficient that two Republic trucks are among the sales.

The Cadillac cut-out chassis is the attraction at the Crispin Motor Car Company display. This chassis, with its white enamel plate glass and electric lights, has been inspected by hundreds of thousands of people in various sections of the country. W. H. Lane, Jr., and C. B. Chandler came here from Boston to demonstrate the mechanical workings of the new Eight, and from here the chassis will no doubt be returned to the factory, as this is the last show on their schedule to date.

Union Sales Company has an interesting demonstration of the efficiency of the Union self-sealing inner tube. The same tire that was stabled on Thanksgiving Day and went through that run without becoming flat is being used. Two hundred and fifty holes were in the tire before being placed on exhibit at this show. A large steel awl is driven into the tire every few moments to show how the air escapes for a few seconds and then stops as the puncture becomes sealed. The one guessing the nearest to the number of punctures made during the show will be awarded one of the self-sealing inner tubes on the closing night of the show.

Think of the comfort!  
You can do your work  
in half the time if you  
use

**FELS-NAPHTHA**

soap.

You do not need a hot fire, you do not need to waste your strength, and you can get done in half the usual time, no matter what the work, washing, scrubbing or housecleaning.

You need it—you'll like it.  
**Fels-Soap Powder.**  
The newest and best.

**All This From 11 A. M. to 11 P. M.**  
WEEK TAKE ANY CAR GOING NORTH TO

**Kelker Street Hall**

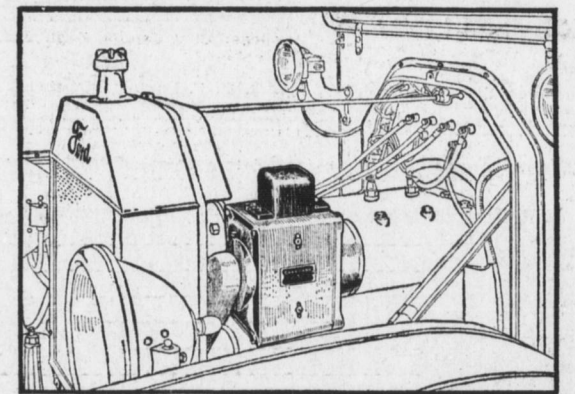
The only perfectly equipped exhibition hall in this city with a level floor space large enough to hold the mammoth display of the

**Souvenir to Each Lady** **Biggest and Best Auto Show Ever Held in This City** **Orchestra Concerts and Dancing**

**1915 Ford Car Will Be Given Away**

SEE THE DECORATIONS **ADMISSION 25c** SEE THE ELECTRIC DISPLAY  
This show is under the personal direction of B. R. Johnson who originated and managed the first auto show in this city in 1910 in the above hall and at the Rex garage in 1911.

**FOR FORD CARS**



**Gray & Davis Starting Lighting System**  
**\$75.00**

This System Offers the FORD Owner the Conveniences of the High-Priced Cars

- it starts the engine by pressing a pedal.
- it eliminates the danger of hand-cranking and back-firing.
- by turning a switch the road is flooded with brilliant dependable electric light.
- it spins the "stalled" engine.
- it serves you steadily, quietly, powerfully—asking less than a half-hour's care each month.
- it brings the convenient use of the car to your wife and daughters.

In these extra services the Gray & Davis system quickly repays its cost.

If you would add to the splendid service you now receive from your sturdy little FORD, equip with the Gray & Davis system.

Sold and Installed By

**FORD SALES CO., or**

**City Auto Supply Co.**  
118-120 Market Street

Adjoining Senate Hotel  
HARRISBURG, PA.

**MR. FORD OWNER**

Just What You Have Been Looking For

**A Mechanical Ford Starter**

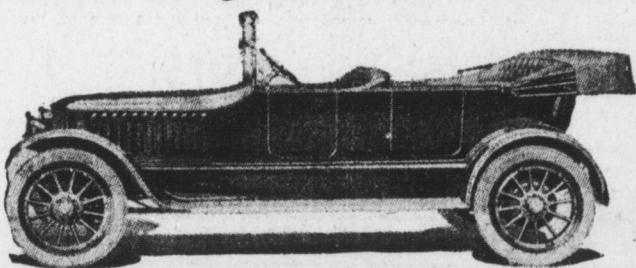
that will give you 100 per cent. uninterrupted service—

Can Be Operated By a Lady

The Sensation of the Kelker Street Auto Show

**CITY AUTO SUPPLY CO.**  
118-120 Market Street

**Stanley Steam Cars**



5-PASSENGER 20 H. P. TOURING

The new Stanley. A large, roomy, comfortable, five-passenger, 20-horsepower touring car, with 130-inch wheelbase, hand-made aluminum body, deep upholstery, one-man-top, clear vision, rain-vision windshield, crowned mudguards, clear running boards, electric lights with dynamo and storage battery. No clutch to work. No change speed lever. Entire control is governed by the brakes and a single little throttle lever on the steering wheel. \$1975 f. o. b. Newton, Mass.

**PAUL D. MESSNER**  
1118 JAMES STREET

**"MADE IN AMERICA" ENDORSED BY HOUSE**

[Continued from First Page.]

that as the State, county and local governments are constantly purchasing supplies, there is a big opportunity for American made goods. The officers of the State government are requested to specify and purchase at all times "the products of the United States of America" and local governments, school heads and public and private institutions and individuals to do the same.

The resolution also requests newspapers to encourage buying of American products.

The measure was laid over for printing.

**FINE HUCKSTERS \$75 FOR SHORT WEIGHING**

[Continued from First Page.]

so far as butter fats is concerned. He was fined \$25.

Another milk case that is scheduled is the prosecution against Harvey S. Bomberger and a Palmyra farmer, John Funk. Funk's farm, it is charged, had been quarantined by the State for foot and mouth disease and a requirement of the regulations is that nothing shall be taken off the farm. The farmer, however, through the urging of Bomberger, it is alleged, sent some of the milk from his dairy to Dr. George R. Moffitt, city bacteriologist, to be tested. The milk was found to be pure but the fact that the product had been taken from a quarantined farm caused the arrest of Bomberger and Funk.

See the Chassis of the **KISSEL KAR**

at the Auto Show in Kelker Street Hall

Its mechanical perfection will appeal to every judge of motor car value. Built in a thoroughly modern factory by an efficient organization that is sound as Gibraltar. It manufactures its own motors, axles, clutches, bodies and many other of the parts that enter into the construction of Kissel Kars. The all-year Kissel Kar with the attachable sedan top is attractive in design and includes every late improvement, every article of equipment and point of refinement.

To the buyer who wants in his car personality as well as beauty, individuality as well as convenience, exclusiveness as well as comfort, in fact, if he seeks at a price below the average a car of better than the average quality, the Kissel Kars fill the bill. We believe that a visit to the show and an unbiased comparison will make these facts obvious.

The line consists of three pleasure car models—60 "Six" at \$3150; 48 "Six" at \$2350; 36 "Four" at \$1450. Commercial trucks, three-quarter ton to five tons.

Harrisburg Kissel Kar Co.