

# Dives, Pomeroy & Stewart

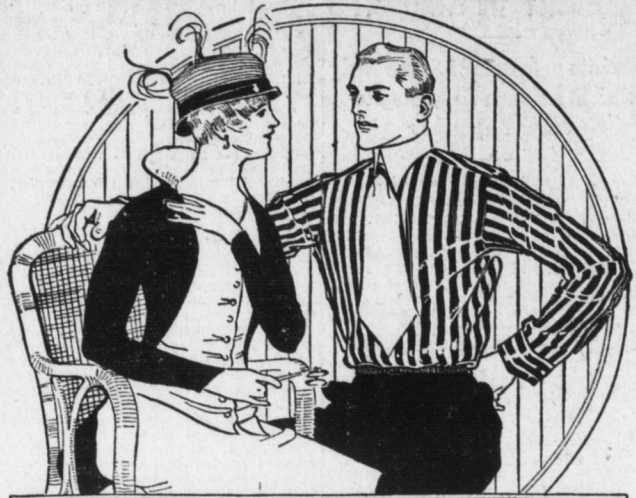
### Turkish Towels, With Initial, 25c

Large Turkish bath towels in pure white with large red embroidered initial, sizes of towel 22x44 inches. A special value at 25c

# Dives, Pomeroy & Stewart

## A Representative Spring Showing of Eagle Shirts for Men: Beginning Tomorrow

### LOOM TO WEARER



## Eagle Shirts

We do not believe there is as good a dollar shirt in the market as the "Eagle"—loom to Wearer brand, for every Eagle shirt from the weaving of the fabric to the ironing of the shirt is done under the same factory supervision. Ready for your inspection tomorrow is by far the finest and best selection of Eagle shirts that we have ever presented in any one season. There are many styles of madras and percale, all of the first quality; sizes 13 1/2 to 18. Specially priced in this showing at .95c

Men's \$1.00 mercerized madras shirts, in Jacquard weaves, sizes 13 1/2 to 17; specially priced at .69c

Men's \$1.00 light weight grey flannel shirts, with flat turnover collars; special .69c

Men's \$1.50 and \$1.98 woven madras and man-of-war shirts from the Eagle and Eclipse factories; special at .95c

Dives, Pomeroy & Stewart—Men's Store.

## Handsomen Linen Napkins at 25 Per Cent. Below Regular Prices

Hundreds of napkins in odd patterns and lots of only half dozen of a pattern are on sale at savings of a fourth. Our Manchester office secured these goods from English and Scotch makers and the shipment just arrived. All pure linen in newest patterns. Sizes are 19, 20, 22, 24 and 27 inches square. Specially priced at 10c, 12 1/2c, 15c, 25c 39c and 50c.

Dives, Pomeroy & Stewart, Street Floor.

## Women's and Misses' \$18.50, \$20.00 and \$25.00 Suits Reduced for Final Clearance to \$9.50, \$10.00 and \$12.50

An opportunity that has seldom been reported for rare value giving is presented in tomorrow's Suit and Winter Coat attractions, including:

\$18.50 black serge suits with trimming of velvet collar and braid. Final clearance price, \$9.50

\$20.00 suits of navy serge, with the coat and skirt trimmed with small covered buttons. Final clearance price \$10.00

\$25.00 chiffon broadcloth suits. Final clearance price \$12.50

\$35.00 chiffon broadcloth suits with fancy plaited back. Final clearance price \$15.00

\$35.00 velvet suits in navy and green with trimming of crushed plush. Final clearance price \$18.50

\$25.00 poplin and gabardine suits in plum and Copenhagen; short coats with fancy trimming. Final clearance price \$10.00

### Thirty Coats in Sizes for Women and Misses Heretofore \$12.50 and \$15.00: To-morrow, \$5.00

\$12.50 black cravenette coats, with white hairline stripe. Final price, to-morrow, \$5.00

\$14.50 full length serge coats; lined throughout. Final clearance price \$5.00

\$15.00 navy serge coats. Final clearance price \$5.00

\$16.50 velvet cord coats in white and rose. Final price to-morrow \$5.00

\$15.00 navy cheviot coats. Final price to-morrow \$5.00

Dives, Pomeroy & Stewart, Second Floor.

## Pretty Gingham Make Pretty Dresses: 25c Styles at 15c

A special lot of fine 30-inch Dress Gingham that we were fortunate in buying. The styles are new and attractive and the colors fast. Sold in full pieces the gingham would have retailed at 25c. Because the goods are in 10 to 20-yard lengths the price is down to 15c

Other interesting news of Spring wash garments told here—

Russian Corsets, white and colored grounds, fancy stripes and self-colored raised cords; special, yard . . . . . 18c

Percales, 36 inches, fancy stripes and figures; special, yard . . . . . 7 1/2c

Serpentine Crepe for kimonos and dressing gowns; special, yard, 12 1/2c

Silk Muslin in fifteen Spring shades; special, yard . . . . . 10c

Dives, Pomeroy & Stewart—Street Floor.

## Four Lots of Reduced Shoes for Men Join the Mill and Factory Sale

Tans and blacks in sturdy Winter styles marked for a clearway because lines are broken in sizes. Three special lots for boys, too.

Men's \$3.00 tan Russia calf and gun metal shoes, English last with blind eyelets, Goodyear welted soles and broad flat heels; Mill and Factory Sale Price . . . . . \$2.39

Men's \$3.00 tan elkskin storm shoes in blucher style, full toe last with heavy double stitched soles; Mill and Factory Sale Price . . . . . \$2.39

Men's \$2.50 gun metal calf, tan calf and patent calf shoes in button and lace styles, Goodyear welted soles; Mill and Factory Sale Price . . . . . \$1.95

Men's \$2.00 gun metal calf and tan calf button and blucher shoes, full toe last with heavy stitched soles; Mill and Factory Sale Price . . . . . \$1.65

### Boys' Shoes

Boys' \$1.75 gun metal calf button shoes, wide toe last with solid leather stitched soles, sizes 1 to 5 1/2; Mill and Factory Sale Price . . . . . \$1.45

Boys' \$1.25 gun metal calf shoes, blucher style, full toe last with heavy stitched soles, sizes 9 to 13 1/2; Mill and Factory Sale Price . . . . . 95c

Boys' \$1.50 tan calfskin button shoes, high toe last with solid leather soles, sizes 9 to 13 1/2; Mill and Factory Sale Price . . . . . \$1.15

Dives, Pomeroy & Stewart—Street Floor, Rear.

## The Inflowing Tide of Spring Hats Brings a Wealth of Styles Chic Models at \$4.95

The millinery section is a veritable garden of hat fashions in full bloom. New styles have come in almost daily this week, giving the section earlier preparedness than in any past season. Ready are more advance Spring styles to choose from than ever before. The small hat predominates, of course, though there are degrees of "smallness," ranging down to the "tiny" hat that is worn with an air that is irresistibly fetching on certain types. For your inspection, tomorrow, are many exclusive models—at . . . \$4.95, \$5.95 and \$6.50 You will be privileged to see, too, smart patterns from the famous ateliers of Jardine, Hawak and Plupps.

Dives, Pomeroy & Stewart—2nd Floor, Front

## Values of Interest in the Basement

Gold traced dinner sets . . . . . \$4.98

Eight-inch hammered brass jard- . . . . . 95c

nieres with ban ribbed cotton . . . . . 60c

English jet decorated fireproof . . . . . 24c

\$2.25 bleached glaze umbrella stands . . . . . 24c

in new designs . . . . . \$1.69

Brown mixing bowls, white lined, 6 in set . . . . . 95c

English jet decorated fireproof . . . . . 24c

English jet decorated fireproof . . . . . 24c

English jet decorated fireproof . . . . . 24c

Dives, Pomeroy & Stewart—Basement.

## Men's Hosiery and Underwear in the Mill and Factory Sale

The values to be presented to-morrow are as attractive as any we have had thus far in the sale and the varieties are as complete. Low in price, yet of excellent grade are these items—

Seamless spliced heel and toe hosiery, in colors and black; pair . . . . . 9c

Fast black silk lisle seamless hose; pair . . . . . 12 1/2c

Fast black silk pleated and seamless hose; pair . . . . . 25c

Egyptian ribbed cotton union suits, of medium or heavy weight; suit . . . . . \$1.00

Egyptian ribbed cotton shirts and drawers, of medium or heavy weight; each . . . . . 50c

Ribbed cotton shirts and drawers, in brown and black; each . . . . . 39c

Natural wool shirts and drawers, of medium or heavy weight; each . . . . . 75c

### TWO ITEMS IN HOSIERY FOR CHILDREN

Fine quality ribbed silk lisle hose, in tan, white and black; specially priced in the Mill and Factory Sale . . . . . 25c

Children's fast black fine quality ribbed cotton seamless hose; Mill and Factory Sale Price . . . . . 19c

Dives, Pomeroy & Stewart—Street Floor.

## A Section of Groceries on the Street Floor

An attractive display of canned goods and fancy bottled goods has been made on the street floor, close to the front stairway to the Basement. This street floor section of the Grocery Department will be found conveniently located and the variety of foodstuffs very complete.

### New Ideas in Men's Neckwear

Wide-end four-in-hands are in favor again and the new Spring arrivals introduce a wealth of beautiful weaves in stripes and figures. The choice of styles at 50c is greater than ever. Fine Barathe silk four-in-hand ties in black and colors, at . . . . . 50c and \$1.00

Crinkled knit four-in-hand ties in solid colors and fancy cross stripes, at . . . . . 25c

Boys' reversible French and wide-end silk four-in-hand ties . . . . . 25c

Boys' new plaid and plain color Windsor ties, plain and hemstitched ends . . . . . 25c

Dives, Pomeroy & Stewart, Men's Wear, Street Floor.

## New Pullman Reed Baby Carriages Have Arrived

Our new 1915 line of Pullman reed baby carriages are on display. The styles are the finest we have ever shown. Finishes are in French grey, brown and natural and handsome white enamel with pink corduroy cushions. These carriages are equipped with reversible gears and are easy riding.

\$15.00 Pullman reed carriages, roll on hood and body; reversible corduroy cushions, hood lined with corduroy, tubular gear, white cross handle, 14-inch wheels with 1/2-inch rubber tires.

\$20.00 Pullman reed carriages, fancy panel sides, corduroy cushions and lining in hood, tubular gear, white enameled cross handle, 14-inch wheels with 1/2-inch rubber tires.

Other reed styles at \$17.50, \$18.50, \$22.50, \$23.50 and eight styles at \$25.00, \$28.00 and \$30.00.

Dives, Pomeroy & Stewart—Basement.

## Odd Chairs and Rockers Reduced in the Furniture Sale

Many attractive chairs and rockers in mahogany, walnut, golden oak, fumed oak and bird's-eye maple and leather upholstered at greatly lessened prices to clearway the sale's accumulation of odd chairs. Interesting values for those who can find room for a few extra chairs or rockers in the library or bedroom.

### CHAIRS AND ROCKERS

\$12.95 mahogany arm chairs . . . . . \$6.50

\$12.50 mahogany chairs . . . . . \$8.50

\$7.95 mahogany chairs . . . . . \$3.95

\$12.50 mahogany chairs . . . . . \$6.25

\$11.50 mahogany inlaid chairs . . . . . \$5.75

\$12.50 mahogany inlaid rockers . . . . . \$6.25

\$6.95 mahogany dining room chairs . . . . . \$3.40

\$35.00 leather chairs . . . . . \$17.50

\$35.00 leather rockers . . . . . \$17.50

### DRESSERS AND CHIFFONERS

\$22.50 walnut dressers . . . . . \$11.25

\$22.50 walnut chiffoners . . . . . \$11.25

\$7.95 mahogany inlaid rockers . . . . . \$3.95

\$9.50 mahogany inlaid rockers . . . . . \$4.75

\$4.50 mahogany walnut rockers . . . . . \$4.25

\$16.50 fumed oak chairs . . . . . \$8.25

\$11.75 fumed oak chairs . . . . . \$5.87

\$12.25 leather chairs . . . . . \$12.25

\$19.50 leather rockers . . . . . \$9.75

\$9.75 enamel chiffoners . . . . . \$9.75

\$15.00 bird's-eye maple dresser . . . . . \$7.50

\$15.00 bird's-eye maple chiffoners . . . . . \$7.50

\$15.00 bird's-eye maple Princess dressers, \$7.50

\$31.50 fumed oak davenport . . . . . \$15.75

Dives, Pomeroy & Stewart—Third Floor.

## Room Size Rugs Reduced: Extra Values in the Mill & Factory Sale

Attractive reductions of rugs from our regular stock include these exceptional values for to-morrow—

	Regular Price.	Mill and Factory Sale Price.
12x3.6 Bigelow Body Brussels Rugs . . . . .	\$52.00	\$25.00
8.3x13.6 Ten Wire Tapestry Brussels Rugs . . . . .	\$23.00	\$18.00
8.3x9 Ten Wire Tapestry Brussels Rugs . . . . .	\$13.50	\$9.50
8.3x14.4 Nine Wire Tapestry Brussels Rugs . . . . .	\$22.00	\$17.50
8.3x12.6 Ten Wire Tapestry Brussels Rugs . . . . .	\$22.00	\$17.50
8.3x12 Saxony Axminster Rugs . . . . .	\$25.00	\$19.50
8.3x11 Saxony Axminster Rugs . . . . .	\$23.75	\$18.50
8.3x15 Nine Wire Tapestry Brussels Rugs . . . . .	\$22.00	\$17.50
8.3x15.6 Nine Wire Tapestry Brussels Rugs . . . . .	\$22.75	\$17.50
8.3x12.6 Ten Wire Tapestry Brussels Rugs . . . . .	\$23.00	\$17.50
9x12 Body Brussels Rugs . . . . .	\$26.50	\$23.75
9x12 Body Brussels Rugs . . . . .	\$25.00	\$22.50
8.3x10.6 Body Brussels Rugs . . . . .	\$25.00	\$22.50
8.3x10.6 Body Brussels Rugs . . . . .	\$22.50	\$19.75

Dives, Pomeroy & Stewart—Third Floor.

## 10 Bars of Soap Will Be Sold for 35c Tomorrow on All Grocery Orders of \$1.00 and Over

The grocery orders carrying this great soap special may include everything except sugar. The soaps include Ivory, Fels Naphtha, P. & G. Naphtha, Babbitt's, Star, Red Seal and others. Adequate provision has been made in the Grocery Department for the Lenten season, and beginning to-morrow you will find on sale the most complete stock of fish and other sea foods that has ever been gathered in any Harrisburg store at moderate cost.

Fancy Norway Mackerel, 10-lb. pails . . . . . \$1.15	Fancy cold packed tomatoes, large cans, 10c; dozen . . . . . \$1.00	"Kruso" crushed Ohio corn, can, 10c; doz. . . . . \$1.00	"Waldorf" pork and beans, can, 10c; 3 cans, 25c	Royal Blue fancy crushed corn, from New York State, can, 12c; dozen . . . . . 95c	Royal Blue hand-packed Maryland tomatoes; large sanitary cans, can, 12c; 3 cans . . . . . 95c	"Stork" table peas, "of the garden," tender and sweet; can, 12c; 3 cans, 35c	"Flag" small rosebud beets, sweet, flavory and tender in large cans, can, 18c; 6 cans . . . . . \$1.00	Fancy new rice, 3 lbs. . . . . 25c	Large pearl tapioca, 3 lbs. . . . . 25c	Scotch pearl barley, lb. . . . . 7c	Yellow split peas, 3 lbs. . . . . 25c	Cream macaroni, 3 long packs . . . . . 25c	Egg noodles, 3 large packs . . . . . 25c	Country cured dried beef, 1/2 lb. . . . . 10c	Frankfurters, lb. . . . . 10c	Lebanon Bologna, lb. . . . . 25c	Minceo ham, lb. . . . . 25c	Sweet sugar cured bacon, sliced any thickness, lb. . . . . 25c	Boiled ham, sliced, lb. . . . . 25c	Ring Bologna, lb. . . . . 39c	Full cream cheese, lb. . . . . 30c	Pimento cheese, lb. . . . . 25c	Sweetener cheese, lb. . . . . 35c	Imported roquefort, lb. . . . . 40c	Brisquet salt pork, bone less, lb. . . . . 22c	Salt codfish, 1 lb. bricks, 15c	Russian spiced sardines, pails . . . . . 75c	Heins applebutter, large crocks . . . . . 35c	Rosedale baking chocolate, 1/2 lb. cakes . . . . . 13c	Harley imported marmalade, crock . . . . . 25c	Pure cider vinegar, large bottle . . . . . 10c	Record coffee, the increasing sale of this blend indicates exceptional value at . . . . . 25c	Banquet coffee; a choice selection of old coffees; carefully blended, white, roasted, lb. . . . . 30c	Purity coffee the finest steel cut coffee to be had, 1 lb. cans . . . . . 40c	B-J coffee, lb. . . . . 20c	5 lbs. . . . . 95c	Dives, Pomeroy & Stewart, Basement.
--	---	--	---	---	---	--	--	------------------------------------	---	-------------------------------------	---------------------------------------	--	--	---	-------------------------------	----------------------------------	-----------------------------	--	-------------------------------------	-------------------------------	------------------------------------	---------------------------------	-----------------------------------	-------------------------------------	--	---------------------------------	--	---	--	--	--	---	---	---	-----------------------------	--------------------	-------------------------------------

## Men's and Young Men's Standard "Crow Black" Cheviot Suits at \$10.00

The Equal of Any \$15.00 Suit Made "Crow Black" Cheviot from which these suits are made is conceded the finest black woolen produced for clothing. It is woven for and controlled exclusively by the makers of "Crow Black" suits. It is positively guaranteed pure wool and a fast lustrous black. The styles are conservative—cut in conservative models, correct at all times for business and dress. The time of this sale is limited.

### Men's Suits Reduced

Blue serge suits in English and conservative sacks, sizes 33 to 44 and stouts 37 to 46; high cut vests, serge and mohair coat linings. \$15.00 Special value, at . . . . .

Men's fancy suits in fine worsteds and cassimeres reduced as follows—

\$12.50 suits at . . . . . \$8.50

\$15.00 suits at . . . . . \$10.00

\$18.00 and \$20.00 suits at . . . . . \$13.50

\$22.50 and \$25.00 suits at . . . . . \$15.00

\$28.00 and \$30.00 suits at . . . . . \$18.00

### Overcoats and Balmacaans Reduced

Last of the winter Balmacaans now sell at

\$9.50 and \$13.50

\$25.00 Overcoats \$15.00

\$20.00 and \$30.00 Overcoats \$18.00

Dives, Pomeroy & Stewart, Men's Clothing, Second Floor, Rear.



## Specially Priced Vests for Women

Women's white cotton vests and drawers, of medium weight; Mill and Factory Sale Price, each . . . . . 39c

Light weight silk and wool vests with long sleeves, ankle length drawers to match; Mill and Factory Sale Price . . . . . \$1.00

White ribbed union suits, fleece lined; Mill and Factory Sale Price, suit . . . . . 75c

White silk and wool union suits of medium weight; Mill and Factory Sale Price . . . . . \$1.39

Dives, Pomeroy & Stewart—Street Floor.

## Women's Kid Gloves in Centemeri Brand Qualities, 59c

Broken sizes of Centemeri's kid gloves, in 2-clasp model; special, pair . . . . . 59c

2-clasp kid gloves, in colors, white and black, with self and black embroidery; pair . . . . . \$1.75 to \$2.25

2-clasp kid gloves, in colors, white and black; pr, \$1.50

2-clasp washable chamousette gloves, in sand, white, putty and other shades; pair . . . . . 59c to \$1.00

Dives, Pomeroy & Stewart, Street Floor.