

KAUFMAN'S MARKET SQUARE "UNDERSELLING" STORE

Temporary Location 9 N. Market Square If There Are Any Remaining Salvage Stocks After To-day's Selling They Will Be On Sale TO-MORROW (SATURDAY)

Look For Announcement in Saturday Morning's "Patriot"

ON MONDAY NEXT WE BEGIN REMODELING Our Temporary Store Room, 9 North Market Square, and will OPEN ON OR ABOUT MARCH 1st With

Entire New Spring Stocks

Watch Newspapers for the Opening Announcement

MEN'S MASS MEETING

Special to The Telegraph Halifax, Pa., Feb. 12.—A service for men only will be held in the United Brethren Church on Sunday afternoon.

IF YOU ARE A DRINKING MAN

You had better stop at once or you'll lose your job. Every line of business is closing its doors to "Drinking" men.

We are so sure that ORRINE will benefit you that we say to you that if after a trial you fail to get any benefit from its use, your money will be refunded.

When you stop "Drinking," think of the money you'll save; besides, sobriety is worth more to their employers and get higher wages.

Costs only \$1.00 a box. We have an interesting booklet about ORRINE that we are giving away free on request.

RHEUMATISM IN ANKLES

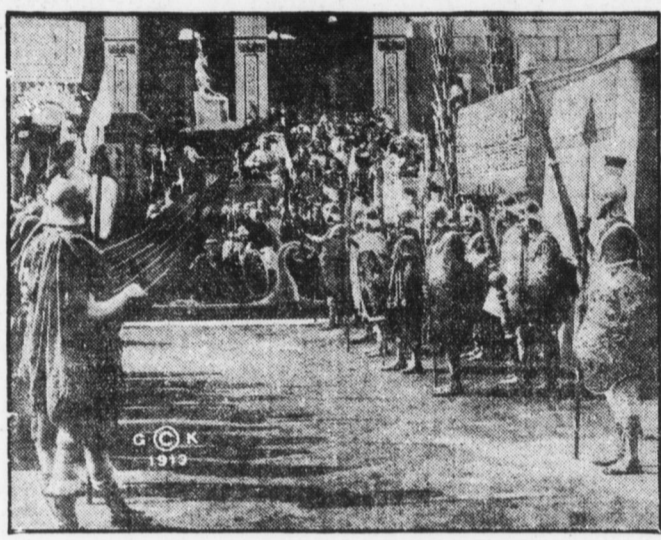
One Bottle of Rheuma Relieved Woman Who Could Not Walk

Marvelous as this story may seem, it is absolutely true; but this is only one of the many almost magical cures that Rheuma is performing these days.

Mrs. Gertrude Kozel, Smithfield, Pa., writes: "I had rheumatism for over a year; it settled in my ankles and I could not walk. I have taken one bottle of Rheuma and do not have any more pain, and I can again walk as well."

H. C. Kennedy and all druggists sell Rheuma for 50 cents. It is guaranteed to cure any case of any kind of rheumatism or money back.

Gratifying relief comes in a day, because Rheuma acts at once on time on the kidneys, stomach, liver and blood, and starts to rid the entire system of poisonous uric acid at once.—Advertisement.



One of the scenes from the big motion picture, Antony and Cleopatra, shown to-day at the Victoria.

STORY RITEN'

By the Messenger Boy

By the Messenger Boy Swell-head is one of them diseases that gets ironick with some people, and comes occasionally to most every one when they get their bills all paid up.

There aint much use in gettin all swelled up when someone tells you you're good lookin, or praises some smart thing you've said, or when the life insurance agent tells you what a fine fiszek you have and buys you a drink at the soda fountain.

Those that works for 4 and 6 a week aint likely to have it; but I'm a little bit in doubt about me in three years, when I get my four a week salary as a reporter.

There aint much use in gettin all swelled up when someone tells you you're good lookin, or praises some smart thing you've said, or when the life insurance agent tells you what a fine fiszek you have and buys you a drink at the soda fountain.

Pluggin away regular so you aint got time for gettin snobbish is the way Abe Linken got to be one of the biggest Americans. Doin of his dooty was the big item of pleasure in his life and he kep on doin so without carin what people said about him.

LENTEN REGULATIONS AND RULES ANNOUNCED

Local Churches Preparing Their Religious Programs; Starts Next Wednesday



The regulations of Lent for the present year, which begins next Wednesday and ends Sunday, April 4, have been announced.

Special services preparatory to Easter, will be held in many churches starting Wednesday, February 17.

The rules will be read in the churches by the pastors and rectors on Sunday.

The Reformed, Lutheran and Protestant Episcopal Churches will have special devotional services.

Lenten regulations for the Roman Catholic Church are as follows.

1. All the faithful who have completed their twenty-first year are bound to observe the fast of Lent, unless dispensed for legitimate reasons.

2. The persons exempted from fasting are: The infirm, those under twenty-one years of age, women in pregnancy or nursing infants, those who are engaged in laborious occupations, and those who are enfeebled by old age.

3. Only one full meal a day is allowed for those who are bound to fast, except on Sundays.

4. On the days on which permission is granted to eat meat, both meat and fish are not to be used at the same meal by any one.

5. A collation or partial meal is allowed in the evening. This should never exceed eight ounces.

6. By virtue of an Indult of the Holy See, dated August 3, 1887, the following special dispensations are granted:

7. Bread, butter, cheese, fruit of all kinds, salads, vegetables, fish, milk and eggs are permitted at the collation.

8. It is lawful to drink in the morning some warm liquid, such as tea, coffee or chocolate, and to partake of a small portion of bread, not exceeding two ounces.

9. The use of lard instead of butter is allowed in preparing fish, vegetables, etc.

10. The use of flesh meat is permitted at any time on Sundays, and once a day on Mondays, Tuesdays, Thursdays and Saturdays, with the exception of Ember Saturday and Holy Saturday.

11. On the above named days when meat is allowed, its use is not restricted to one meal in the cases of persons exempt from fasting by age or laborious occupation. Those who are not exempted may eat meat at any time, but the principal meal cannot be conveniently taken at midday.

12. It is permitted to change the order, taking the collation then and the dinner in the evening.

13. By virtue of powers granted by the Holy See, workmen and their families are permitted the use of flesh meat once a day on all the fast days and on the days of the rogation, with the exception of all Fridays, Ash Wednesday, the Wednesday and Saturday of Holy Week and the eve of Christmas.

14. Those who are exempted from fasting are not allowed to eat fish and flesh at the same meal, and they are exhorted to perform some voluntary act of mortification.

15. The principal meat cannot be conveniently taken at midday.

16. The principal meat cannot be conveniently taken at midday.

17. The principal meat cannot be conveniently taken at midday.

18. The principal meat cannot be conveniently taken at midday.

19. The principal meat cannot be conveniently taken at midday.

20. The principal meat cannot be conveniently taken at midday.

21. The principal meat cannot be conveniently taken at midday.

22. The principal meat cannot be conveniently taken at midday.

23. The principal meat cannot be conveniently taken at midday.

24. The principal meat cannot be conveniently taken at midday.

25. The principal meat cannot be conveniently taken at midday.

26. The principal meat cannot be conveniently taken at midday.

27. The principal meat cannot be conveniently taken at midday.

28. The principal meat cannot be conveniently taken at midday.

29. The principal meat cannot be conveniently taken at midday.

30. The principal meat cannot be conveniently taken at midday.

31. The principal meat cannot be conveniently taken at midday.

32. The principal meat cannot be conveniently taken at midday.

33. The principal meat cannot be conveniently taken at midday.

34. The principal meat cannot be conveniently taken at midday.

35. The principal meat cannot be conveniently taken at midday.

36. The principal meat cannot be conveniently taken at midday.

37. The principal meat cannot be conveniently taken at midday.

38. The principal meat cannot be conveniently taken at midday.

39. The principal meat cannot be conveniently taken at midday.

40. The principal meat cannot be conveniently taken at midday.

41. The principal meat cannot be conveniently taken at midday.

42. The principal meat cannot be conveniently taken at midday.

43. The principal meat cannot be conveniently taken at midday.

44. The principal meat cannot be conveniently taken at midday.

45. The principal meat cannot be conveniently taken at midday.

46. The principal meat cannot be conveniently taken at midday.

47. The principal meat cannot be conveniently taken at midday.

48. The principal meat cannot be conveniently taken at midday.

49. The principal meat cannot be conveniently taken at midday.

50. The principal meat cannot be conveniently taken at midday.

51. The principal meat cannot be conveniently taken at midday.

52. The principal meat cannot be conveniently taken at midday.

53. The principal meat cannot be conveniently taken at midday.

54. The principal meat cannot be conveniently taken at midday.

55. The principal meat cannot be conveniently taken at midday.

56. The principal meat cannot be conveniently taken at midday.

57. The principal meat cannot be conveniently taken at midday.

58. The principal meat cannot be conveniently taken at midday.

59. The principal meat cannot be conveniently taken at midday.

60. The principal meat cannot be conveniently taken at midday.

61. The principal meat cannot be conveniently taken at midday.

62. The principal meat cannot be conveniently taken at midday.

63. The principal meat cannot be conveniently taken at midday.

64. The principal meat cannot be conveniently taken at midday.

65. The principal meat cannot be conveniently taken at midday.

66. The principal meat cannot be conveniently taken at midday.

67. The principal meat cannot be conveniently taken at midday.

68. The principal meat cannot be conveniently taken at midday.

69. The principal meat cannot be conveniently taken at midday.

70. The principal meat cannot be conveniently taken at midday.

71. The principal meat cannot be conveniently taken at midday.

72. The principal meat cannot be conveniently taken at midday.

73. The principal meat cannot be conveniently taken at midday.

74. The principal meat cannot be conveniently taken at midday.

Bowman's Special For Boys. Boys' Overcoats at \$2.98—regularly \$3.95 and \$5.00. Boys' Norfolk Suits at \$1.98—regularly \$3.50. Overflow News of Bowman's Big Bargain Sale. Choose From a Large Variety of Dress Cottons at 15c Yard. Three Unusual Shoe Bargains. Women's Button and Lace Shoes at 98c pr.—regularly \$2.50 to \$3.50. Men's Shoes at \$1.79 pr.—regularly \$2.50 and \$3.00. Boys' Shoes at \$1.59 pr.—regularly up to \$3.50 pr.

Overflow News of Bowman's Big Bargain Sale (Sale Ends February 17th)

Choose From a Large Variety of Dress Cottons at 15c Yard

Here are wanted fabrics, and everyone is a splendid value. At 15c yard, you can secure... Yard-wide Seco Silk, in red, brown, Nile and light blue. Value 25c. 40-inch Mercerized Voile, exquisite designs, in rosebuds, floral patterns; all shades. Value 25c. Satin Stripe Tissues, in rose, light blue, pink and tan. Value 25c. 36-inch Poplar Cloth, in navy, black and garnet. Value 25c. Sati Silk, beautiful colored designs in lilac, rose, pink, light blue and mais. Value 25c. 32-inch Juvenile and Devonshire Cloth, in stripes, checks, and plain colors. Value 19c. 32-inch Enchantress Suiting, all shades. Value 25c. 32-inch Scotch Zephyr Ginghams, in stripes and bars. Value 25c. 32-inch Crepe Plisse, beautiful rosebud patterns. Value 25c.

Three Unusual Shoe Bargains

Women's Button and Lace Shoes at 98c pr.—regularly \$2.50 to \$3.50—in black and tan leathers, and black velvet and satin. Mostly all sizes in the lot. Men's Shoes at \$1.79 pr.—regularly \$2.50 and \$3.00—gun metal and patent colt; all sizes in the lot. Boys' Shoes at \$1.59 pr.—regularly up to \$3.50 pr.—mostly large sizes.

B. B. B. Specials in the Underwear and Hosiery Sections

Women's Underwear, 15c—regularly 25c—vests and pants; medium and heavy weight; bleached; peeler color. Women's Underwear, 25c—regularly 50c—vests, pants and union suits; white and peeler color. Children's Underwear, 12 1/2c—regularly 25c—vests and pants; medium and heavy weight. Women's Hose, 9c., 3 prs., 25c—regularly 12 1/2c—double heels and toes; plain black and colors. Children's Hose 14c pr.—regularly 19c—fine ribbed cotton; double knees; black only. Infants' Hose, 7 1/2c pr., 4 prs., 25c—regularly 10c and 12 1/2c—fine ribbed cotton; black and colors.



Women's Mender Gloves 59c and 69c

\$1.50, \$1.75 and \$2.00 black French Kid 2-clasp gloves, pique and overseamed. All sizes. \$3.00 to \$3.50 white 16-button length French Kid Gloves, \$1.35 pr.

B. B. B. Prices On Silks Are Way Down

Silk Crepe de Chine, 69c yd.—regularly \$1.00—36 inches wide; in Copenhagen, navy, sand and wistaria. Black Satin Messaline, 69c yd.—regularly 89c yard-wide. Black Satin Charmeuse, 98c yd.—regularly \$1.50—40 inches wide. Cheney Bros. Shower-proof Foulards, 59c yd.—regularly 85c—all shades; set figures. Satin Messaline, 59c yd.—regularly 75c—pin stripes; in navy, black, Copenhagen, brown and taupe.

MUSICAL TRAVESTY PARTICULARLY TIMELY

"Prince of Harrisburg" Is Brilliant Burlesque of "Famous Opera"; Red Cross Benefit

Many Lutherans of the city attended the concert given by twenty-two boys of the Muhlenberg College Glee Club in Technical High school under the auspices of the General Council of Lutheran churches for the benefit of the Red Cross Society.

USING SOAP SPOILS THE HAIR

Soap should be used very sparingly, if at all, if you want to keep your hair looking its best. Most soaps and prepared shampoos contain too much alkali. This dries the scalp, makes the hair brittle, and ruins it.

Hucklewartz, the Prince, disguised as a minstrel, goes in search of Bum-Bum, a pretty little girl from Siwash college. At once, you see a love affair is on. But, he finds that she is engaged to Singfraud, the Lord High Executioner.

DYSPEPSIA GONE! NO INDIGESTION, GAS, SOURNESS—PAPE'S DIAPEPSIN

When your meals don't fit comfortably or what you eat lies like a lump of lead in your stomach, or if you have heartburn, that is a sign of indigestion. Get from your pharmacist a fifty-cent case of Pape's Diapepsin and take a dose just as soon as you can. There will be no sour risings, no belching of undigested food mixed with acid, no stomach gas or heartburn, fullness or heavy feeling in the stomach, nausea, debilitating headaches, dizziness or intestinal gripping.

former of Matrimony, and all ends happily. The leader of the club is G. D. Marks and its members are: First tenor, W. A. Freilhofer, G. D. Marks, G. G. Brubaker, C. A. Erickson, J. T. Lummel; second tenors, W. H. Laury, C. F. Miller, E. J. Brong, T. B. Keck, H. E. Zinner, first bass, W. L. Reinsner, H. W. Smetzer, A. D. Roderick, R. E. Schoenly, J. L. Kline, H. D. Elvidge; second bass, E. W. Moyer, R. C. Walters, D. F. Day, J. S. Kleckner, E. H. Moyer.

All fruit syrups used in our candies are made by our own experts from fresh, ripe fruit. Huyler's FRESH EVERY HOUR. Our Sales Agents in Harrisburg are J. H. Boher, F. J. Altshouse, Cunningham's. Huyler's Cocoa, like Huyler's Candy, is supreme.

MAJESTIC THEATRE WILMER, VINCENT & APPELL, MGRS. To-morrow—Return Engagement All Next Week—Matinees Daily. German War Films Chas. K. Champ in. Offering Metropolitan Plays in Metropolitan Style by His Metropolitan Company.

Quit Sneezing! A Little Kondon's Catarrhal Jelly placed in the nostrils will bring relief. KONDON MFG. CO., Minneapolis, Minn.

Opheum Colonial EMMA CARUS BILLY VAN. Assisted by Carl Randall. Next Week HOME AGAIN Musical Comedy with 15 People and Van and Schenck. 3 OTHER ACTS 3 and Best Pictures.

Photoplay To-day Broadway-Star Feature Under Neath the Pain: 3 Acts Featuring HELEN GARDNER. Our Regular Friday Railroad Serial THE LITTLE ENGINEER. SATURDAY "HIS NEW JOB"—2 Acts. Chas. Chaplin in the lead. It's Immense.

MAJESTIC THEATRE THURSDAY AND FRIDAY, FEBRUARY 11, 12 Gilbert and Sullivan's Ever Trueful "MIKADO". For Belgian Relief. Presented by the Harrisburg Operatic Society.

Free Moving Pictures every evening 7 to 11 P. M., Palace Confectionery, 225 Market street.

VICTORIA ANTONY and CLEOPATRA Extra Special Feature To-day. Shown in some of the largest theaters at 50c to \$1.50. See it to-day at the Victoria—the house of features—for 10c. Shown to-day for the first time in Harrisburg. Show starts 9:30 A. M. and lasts two hours. 6 Acts--7500 People--2 Years Required to Make Production