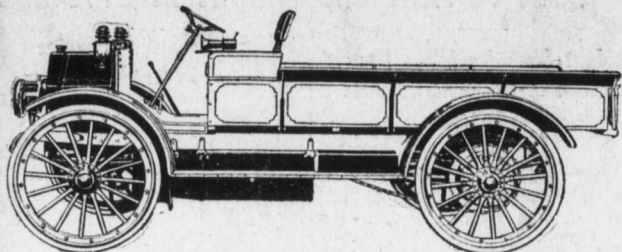


International Motor Truck



The new models "E" and "M" are now on exhibition at the International Motor Truck Department, 619 Walnut St., and a cordial invitation is extended to all parties to look these sturdy models over.

In addition to the heavy-duty motor you will find the sealed governor, which prevents over-speeding; a one-lever control; no stripping transmission gears; roller bearing transmission; large counter shaft equipped with roller bearings; heat treated I-beam front axle; artillery wheels with side flange; detachable tires, and many other features of vital interest to efficient service.

International Harvester Company of America (Incorporated)

Motor Truck Department, 619 Walnut St., Harrisburg Also other branch houses at Pittsburgh, Philadelphia, Baltimore, Elmira and Parkersburg.

HUPMOBILE MANAGER IS VERY OPTIMISTIC

Results at Big Shows Exceed Expectations of Commercial Manager Harris

That the New York and Chicago shows have been more successful from a business standpoint than any previous exhibits, is the opinion of F. A. Harris, commercial manager of the Hupp Motor Car Company. Mr. Harris has attended motor shows in his executive capacity since the beginning of the industry, and has been closely connected with the business side.

"From a business standpoint, the 1915 shows have been the greatest success that I have ever seen," said Mr. Harris. "This is graphically shown by three main facts: First, the number of exhibitors; second, the big attendance which smashed all previous records; and third, the extraordinary amount of business done."

"Chicago was probably the most successful. Of course, Chicago draws country and prospects from all over the country and this year, was very strong with the farmers of the West, who proved to be, as a class, the biggest buyers of automobiles."

"Hupmobile dealers and distributors were in attendance from all parts of the country. Dealers from Chicago, Chicago from California to Maine; and from the Gulf to the remote parts of Canada. Everywhere where Hupmobile was enthusiastic on the outlook for the coming season and almost every distributor left orders for the immediate delivery of a large number of cars. The big amount of business done at the Chicago show indicates the great possibilities for the coming year."

"People all over the country are beginning to realize that the war is over and the wonderful resources of this country have proved sufficient to withstand the European conflict, they are becoming more confident and rapidly going about their business."

"It seems to me, after reviewing both motor shows, that prosperity for the year of 1915 is assured. We have all of us been awaiting bigger and better things. Now that Spring is here and the buying public has shown their confidence in conditions, I look forward to good business in all lines."

"Certainly, the Hupp Company's business was never so sound with prospects so good. The outlook is that we shall beat all Spring selling records."

Motor Truck Indispensable Today For Distribution

"The constantly increasing demand for motor trucks of light and medium capacity has necessitated the establishment of a new department, hereafter to be known as the International Motor Truck department, now located in our new and well equipped quarters at No. 619 Walnut street," says C. J. Stevens, manager of the truck department of the International Harvester Company.

"The International Motor Truck is backed by a manufacturing experience of more than seventy-five years, and hundreds of service stations are maintained for the protection of its patrons. This Harrisburg branch stands for service and square dealing, as evidenced by our constantly increasing trade. The expressions of satisfied customers and repeat orders make this International Motor Truck Department a pleasure to its owners and employees. To the modern businessman this motor truck is as indispensable as the telephone and daily paper."

"Making comparisons between the motor truck and the horse, we are inclined to place motor truck transportation in direct competition with horse transportation, totally ignoring the motor truck's advantages in speed, business-building possibilities and its utility in ways for which the horse is entirely unsuited. In this broader scope, and the motor truck is given full credit for all its advantages. The motor truck is the same as the comparison between the efficiency of a horse car and a modern trolley car. It is the result of the demands of modern business for a better, faster and more efficient means of transportation."

Dee Hoel, a rural mail carrier of Cottontown, Pa., has converted his motorcycle into a hobsled, thereby making it possible for him to cover his route every day with the two-wheeler.

DROP FORGING IS VERY OPTIMISTIC

Revolutionizes Making of Strong Light Cars; Makes Quantity Production Possible

To a great extent the tremendous production records attained by the larger American motor car factories in the past few years have been accomplished through the rapid strides made in the development of the art of drop forging.

From the very beginning of the automobile industry, engineers have sought means of obtaining maximum strength in the parts subjected to heavy strain, without adding useless weight to the completed car. Drop forging and the use of high grade chrome Vanadium steel proved the solution of the problem and to-day the manufacturer who builds the majority of the parts used in his car, counts an efficient forge shop as one of his most valuable possessions.

Our old friend, the village blacksmith, was the first drop forger. Some fifty years ago, a member of this brotherhood evolved the scheme for using a steam hammer on the larger forgings he had to make. But in order to achieve the desired result, he was compelled to work out the material almost to the desired shape by hand, then with the aid of portable tools which were used in conjunction with his crude steam hammer, the forgings were finished to size. With this method, much depended upon the skill of the smith, and uniformity was more or less a matter of guess work. The human element was strong.

The railroad blacksmith took up the methods of his predecessor and improved upon them, and the experts in the big sewing machine, shoe machinery and harvesting machinery factories added inventions and improvements which still further simplified the process.

The automobile manufacturer, however, has brought the art down to its greatest point of efficiency, and men who understand the principles of motor car construction are inclined to measure the longevity of an automobile by the number of drop forgings entering into its construction.

From the fact that drop forging is nowadays purely a mechanical process, eliminating the human element of skill and artistry formerly acquired by the smith, the methods used are extremely simple and effect a wonderful reduction in the cost of production and, in addition, uniformity of product is absolutely assured. In some cases the production cost is reduced on a ratio of about 40 or 50 per cent. It can be made in greater variety, and those which were most difficult and even impossible to finish over the anvil, are now formed with apparent ease in the drop hammer. There is almost no limit to design; any shape from a cocked hat to a frying pan can be formed. In addition, the work is accurate and finished.

As pioneers in the manufacture of parts for automobiles, Dodge Brothers, who have just placed their own car on the market and at the Palace, rapidly grasped the advantages of drop forging, and their forge plant in Detroit is pointed out as typifying all that is best in the business. The huge steam hammers with their falling weights, as heavy as two to three tons, are almost constantly in operation, turning out parts for the new car. Here the visitor can see the standard steel stock, heated to a white glow and then placed under the hammers, coming from them magically formed into front axle, connecting big rod, crankshaft, camshaft, or any kind of a hundred and one parts. There is a special set of dies for each part, the hammer head recessing one-half and the bed of the machine the other. The first set breaks down the stock into the general shape required, while the second set shapes it accurately. Sometimes both sets are in one hammer, if the part is small enough to admit two sets side by side. Often break down and finishing hammers are separate.

To the visitor making his first trip through a forge shop, it is a source of considerable wonder as to how the men in charge of the hammers stand the terrific heat from the white-hot metals. The answer is simple in the type of building erected by Dodge Brothers to house the forge shop. This is typical of the big modern manufacturing institutions of the kind. The buildings are long and narrow, of steel and concrete construction, and built so that during the summer months it is possible to open practically all sides of the structure and admit every particle of air.

Loss of Car Should Be Reported to State Police

Considering the large number of automobiles that are stolen every year, the Department of State Police has sent out the following notice: "The operations of organized bands of automobile thieves throughout the State of Pennsylvania have become so extensive that it is necessary to bring the attention of automobile owners to the importance of immediately notifying the State Police upon the loss of a car."

"The information should be transmitted by telephone or telegraph, to the Department of State Police, Harrisburg, Pa., or to 'The Commanding Officer' of any of the four troops: "Troop 'A' State Police, Greensburg, Westmoreland county; Troop 'B' State Police, Wyoming, Luzerne county; Troop 'C' State Police, Pottsville, Schuylkill county; Troop 'D' State Police, Butler, Butler county."

"When giving the information the State Police should be notified: When and where the car was lost, name of owner, license number, manufacturer's number, year of model, color of car, or of any car or further information that might be of use in making search for the lost car."

"Prompt and intelligent co-operation on the part of automobile owners will result in the recovery of stolen cars and the prevention of such crimes in the future."

"Automobile clubs are requested to have copies of this notice published in their automobile journals."

"JOHN C. GROOME, Superintendent."

HIS FIRST My first sermon was delivered when I was the son of my father, who was also a preacher, and upon my return from a visit to my father's farm in the shadow of the state of West Virginia. I was then a young boy of about fifteen minutes, and no words of mine can describe the trepidations from which I suffered during this short interval.

The audience consisted of about fifty farm hands, five or six of their employers, and the miller of the little hamlet. I addressed them with what I thought to be a considerable effect for about fifteen minutes, and no words of mine can describe the trepidations from which I suffered during this short interval.

At the close a hasty plowman asked me if I was the son of my father, who was also a preacher, and upon my replying that I could claim that honor, he strongly urged me to send my father the next time and avoid such a catastrophe as I had inflicted upon them that Sabbath afternoon.

This began my career as a preacher, and I walked the eleven intervening miles to my home as a wiser youth. The Rev. S. Parkes Cadman, D. D., Pastor of the Central Congregational Church, Brooklyn, in the Christian Herald.

Maxwell

New 1915 Model

\$695

17 New Features



The "Wonder Car." The sensation of the automobile world. The biggest automobile value ever offered under \$1000.

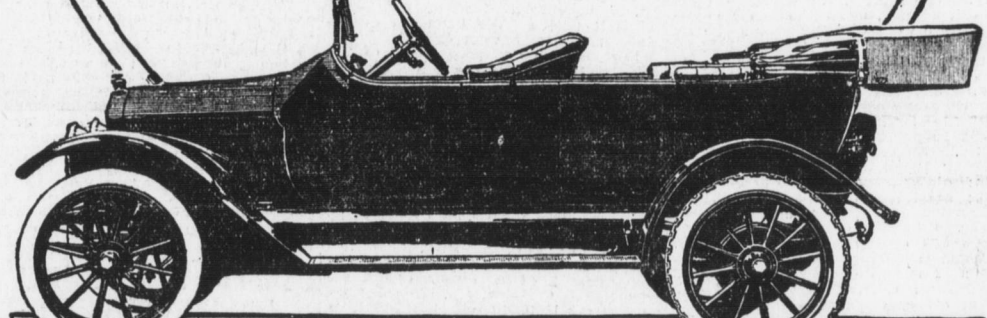
Powerful, fast, silent and one of the easiest riding and most economical cars in the world. A splendid, fully equipped real 5-passenger family automobile. With Sims high tension magneto, sliding gear transmission, left hand drive center control, anti-skid tires on rear and—

Practically All the High Priced Features of High Priced Cars

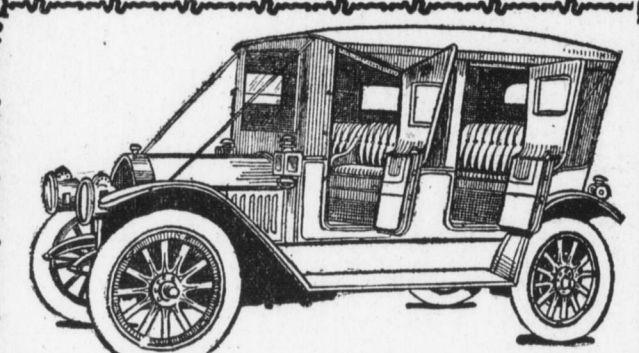
The easiest car in the world to drive. The greatest all around hill climbing car in the world. The car with a pure stream-line body.

Holds the road at 50 miles an hour

With Electric Starter and Electric Lights \$55 extra



E. W. SHANK
DISTRIBUTOR
Central Garage 334 Chestnut St.



Auto Door Opening Side Curtain

All Conveniences of a Limousine at a Very Small Cost

We use the old curtains with this attachment. Can be taken off and put on in the same space of time as ordinary side curtain.

Sefton Carriage Works
1203-07 Capital Street

CHALMERS

DODGE BROS. and SAXON

Motor Cars

KEYSTONE MOTOR CAR CO.

1019-25 Market Street

PAIGE

GLENWOOD "36" 5-passenger touring, \$1075
FAIRFIELD 6-40 7-passenger, \$1395

The Paige Four "36" is a car that created a record for excess value from the first day of its announcement. This year it retains every excess value feature at a price \$200 less than last year.

The Paige "Six-46" has the most distinctive and artistic body design in America; Continental motor; cantilever spring suspension; Gray & Davis lighting and starting system; Bosch magneto; multiple-disc, cork-inset clutch and Rayfield carburetor. "The Standard of Value and Quality."

RIVERSIDE GARAGE

REAR 1417 NORTH FRONT ST. BELL PHONE 3731H. GEORGE R. BENTLEY, Proprietor

MILLER Geared TIRES to the Road

Add the "Class" Mark to Your Car

STERLING AUTO TIRE CO., 1451 Zarker Street

THE VULCANIZERS

Diamond Tires

New Fair Price List that will cut the haggle out of tire buying for Consumers:

	Plain	Safety	Tubes
28x3	8.50	8.85	2.25
30x3	8.50	8.85	2.25
30x3 1/2	11.00	12.20	2.70
32x3 1/2	13.35	14.00	2.80
33x4	19.05	20.00	3.90
34x4	19.40	20.35	4.00
35x4	20.20	21.20	4.10
36x4	20.50	21.55	4.20
35x4 1/2	27.00	28.35	5.10
36x4 1/2	27.35	28.70	5.20
37x4 1/2	28.35	29.75	5.30
37x5	32.30	33.90	6.30

Swan Demountable Closed Bodies for Ford Cars
Coupe, \$54.00. Limousine, \$65.00.

The "Off an On" Tire Tool
For Clincher Tires \$1.00
Makes complete Tire change in 3 Minutes.

Skid Chains, Auto Supplies, Brake Lining, Ford 30x3 1/2 wheels, \$2.00

Plank-Werner Tire Co.

Exclusive—
Diamond Tire Distributors
4th and Chestnut Sts.
Open Evenings. Phone 3259

Hupmobile

Car of the American Family

ENSMINGER MOTOR CO.

THIRD AND CUMBERLAND STS. Distributors.

SPRING WHEAT IS TO BE WIDELY SOWN

Farmers Are After the Increased Prices That Will Prevail During This Year

soon as the ground can be prepared and efforts to raise a big crop will be made. This wheat should be ready for cutting not very many weeks after the winter wheat is cut.

Preliminary reports also show that there will be a large acreage in corn and that there is a demand for it which may result in cutting down of the amount which might be fed on the farms producing it during the winter. The 1914 crop of corn was exceptionally fine.

In Altoona, Pa.—motorist contests. A number of riders who have converted their motorcycles into motor sleds have been staging some very exciting competitions.

The annual endurance run of the Newark (N. J.) Motorcycle Club will be held this year on May 30-31, and will be to Wilkes-Barre, Pa., and return.

A motorcycle race meet will be held at Santa Ana, Cal., on February 7. June 29 has been selected as the date for the second annual endurance run of the Yonkers Motorcycle Touring Club.

A 200-mile endurance run is among the many events planned for the summer by the Arrow Motorcycle Club of Hudson County, N. J.

MOTORCYCLE NOTES

Dodge City is planning to hold the Kansas annual 300-mile motorcycle race this year on July 3.

A new sport has been inaugurated

WE WANT YOU TO SEE THE NEW 1915

EMPIRE

"THE LITTLE ARISTOCRAT"

Touring Car

F. O. B. Harrisburg

\$1000

Streamline Body
Electric Lights
Electric Starter
Turkish Upholstery
Concealed Hinges
Roll Crown Fenders

Unit Power Plant
Four Cylinders
Motor, 3 3/4 bore
Stroke, 4 1/2 inches
Non-Skid Tires
On Rear Wheels

DEMONSTRATOR NOW HERE

Penbrook Garage

Penbrook, Pa. Bell 2539 Bell 989-J

Howry & Son Wagon Works

We build wagons and sell direct to the consumer and saving you the retail profit. Also build auto truck bodies, paint and trim auto cars.

Shiremanstown Pa.