

Bowman's

Call 1991—Any Phone

Founded 1871

New Veilings in new meshes at
25c and 50c yd.

SATURDAY HOURS
9 A. M. to 9 P. M.

Bowman's

Call 1991—Any Phone

Founded 1871

**Every Man Will
Want His Share of
These Shirts at 59c**

Think of buying a new shirt with the smart heavy stripes, and French cuffs at 59c; made of the same quality percale usually found in dollar grades. It's a special sale tomorrow.

Main Floor—BOWMAN'S.



**Coutil Corsets
Special at 59c**

Medium bust and extra long skirt; embroidery trimming at top; two hooks at bottom; heavy hose supporters.

Second Floor—BOWMAN'S.

**Clearing Out
Ribbons at 25c yd.**

They are mill ends of 39c Roman stripes; excellent for girdles or children's hair bows, 5 inches wide.

Main Floor—BOWMAN'S.

**Waists That Are
New and Dainty**

\$1.25, \$1.50, \$1.98, \$2.50

Those at \$1.25 and \$1.50 are of Habutai silk in new models; white only. Those at \$1.98 and \$2.50 are of excellent crepe de chine, in the wanted shades.

Second Floor—BOWMAN'S.

Smart Neckwear

A new receiptment of dainty styles and all are those very popular collars; collar and cuff sets of organdie and Oriental lace. Priced at .25c and 50c

Main Floor—BOWMAN'S.

An Extraordinary Sale

**Copies of Famous Oil Paintings
in Oil Effect, 95c Each**

Something entirely new in art work. By a special process many old favorites have been reproduced in such a fine manner that they would pass as original oil paintings. They are very special at 95c, which price was only possible through buying a quantity. Framed, if desired, in a beautiful gilt frame, for \$1.45 extra; complete for \$2.40 (See window display.) For sale in Carpet Department.

A FEW OF THE SUBJECTS:

Mrs. Siddons, by Gainsborough.
The Homestead, by Rousseau.
End of the Dream, by Ridel.
Rest After Work, by Defregger.
Village Inn, by Ostade.
Renate, by Buchner.
Behind the Plough, by C. Welsh.

Fire Worshippers, by Peel.
Hansel, by Schauss.
Gretchel, by Schauss.
Here I Am, by Seeger.
Twilight, by Ruedsuehle.
Mosart, by Stieler.
Flight to Egypt, by Lorrain.

Fourth Floor—BOWMAN'S.

**A Clearing Out
Sale of Hair Goods**

In this unusually liberal hair goods sale we have reduced prices on all our present stock in order to make room for Spring deliveries. Every article is made of fine quality hair—soft, lustrous and with natural, permanent waves. The shade assortment is complete—every conceivable shade is included.

Fine wavy switches reduced to 71c from 95c; reduced to \$1.39 from \$1.85; reduced to \$2.17 from \$2.85; reduced to \$2.89 from \$3.85.

Extra fine wavy switches, reduced to \$1.61 from \$2.15; reduced to \$2.44 from \$3.25; reduced to \$3.71 from \$4.95; reduced to \$4.69 from \$6.25.

Gray wavy switches, reduced to \$2.36 from \$3.15; reduced to \$3.13 from \$4.15; reduced to \$4.69 from \$6.25; reduced to \$5.89 from \$7.85.

Fine wavy transformations, reduced to \$1.61 from \$2.15; reduced to \$3.71 from \$4.95.

Gray wavy transformations, reduced to \$1.61 from \$2.15; reduced to \$5.59 from \$7.45.

Many other hair accessories, not listed, at the same reductions.

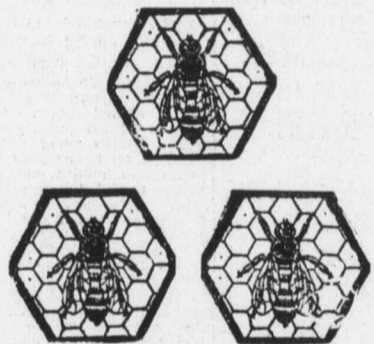
Second Floor—BOWMAN'S.

**Boys' Overcoats at
Clearing Reductions**

Boys' Heavy Chinchilla Overcoats, with comfortable, warm, shawl collars. Come in blue and gray for boys 10 to 17 years. Regularly \$5.95 and \$6.95. Reduced to \$3.95

For the Little Boy of 2½ to 8 years we are showing Balmacaan Overcoats in about a dozen different cloths, in blue, green, brown, heather mixtures, etc. Reduced to \$1.95, \$2.98 and \$3.65—\$2.98, \$3.98 and \$4.95.

Third Floor—BOWMAN'S.



All three of our bees are now busy buzzing about. This is a sure sign that an unusual something is going to happen soon.

**Men's and Youths' \$12.50,
\$13.50 and \$15 Suits at**

\$8.50

These are all well tailored suits of the new snappy English models, as well as the more conservative styles; lined in most cases with a good quality of serge, others lined with mohair. Many can be worn throughout the year.

\$12.50 and \$13.50 all wool cassimeres, unfinished worsteds and homespuns, in gray, tartan checks, plaids and pencil stripes; all at \$8.50

\$15.00 all wool striped serges and worsteds, in mixtures, stripes, checks and overplaids in new English models as well as stouts, regulars and shorts; all at \$8.50

Blue serges, blue worsteds, blue flannel suits, that were \$12.50 and \$13.50, are now \$8.50

Third Floor—BOWMAN'S.



Third Floor—BOWMAN'S.

Our entire stock of Men's Overcoats reduced as follows:

\$6.75, \$8.75,
\$10.75, \$12.75

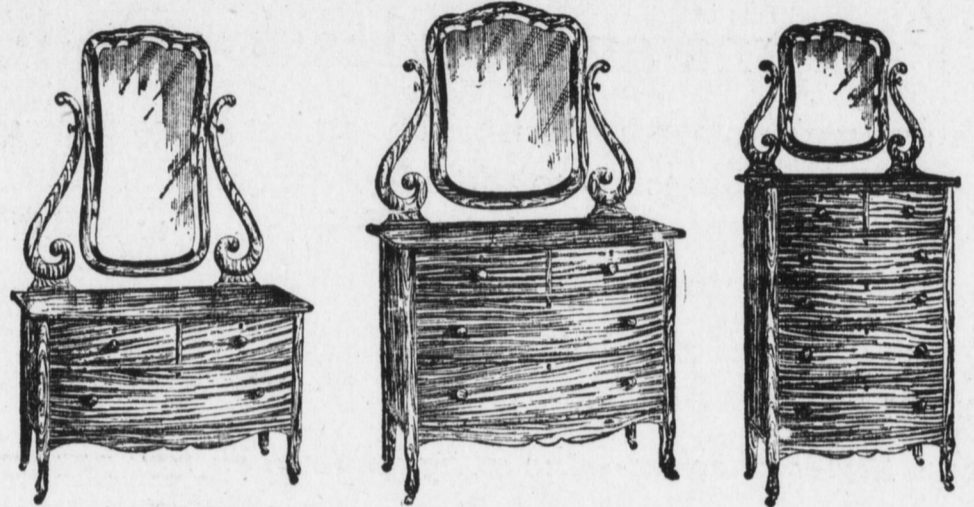
were \$10 to \$20

A special lot of Men's Overcoats that were \$9.90 and \$12.50, are now

\$5.00

**Your Home Is Worthy of Any
Furniture in This Sale**

When you purchase furniture, you purchase YOUR comfort and convenience, and the beauty of YOUR home; and it must be lasting. To this end, our February Furniture Sale has been planned and perfected, and today it ranks higher than any in this locality because larger assortments and greater varieties are offered, and lowered prices to make it a great economical event. In this sale you may secure popular price lines as well as the higher grades, including period furniture. We invite your inspection and comparison.



**Princess Dresser, Bureau, and Chiffoniers,
Special in This Sale---\$12.90 Each**

This is considered one of the greatest furniture specials in the entire stock. Exactly like above illustration, with full swell front and French lines, and come in five different dull rubbed finishes; mahogany, tuna mahogany, quartered oak, bird's-eye maple and walnut. They are very well constructed, and were it not for this special sale, they would sell for \$18.00 each.

**Two Telegrams and the
Express Train**

Tell the story of a newly created three-piece living room suite. Grand Rapids wired our Furniture Dept. of a new sample suite they had just placed on show, asking if we would be interested in showing it in our February sale, taking orders if desired.

Another wire—and along it came by express.

It is Jacobean in every respect, with twist posts and cane seats and backs. Consists of settee, armchair, and armed rocker. The special price is \$34.95, instead of \$42.00.

Fifth Floor—BOWMAN'S.

**Toilet Tables to
Match Above
Pieces, \$10.90**

Patterned along the same lines and come in as many different finishes. \$13.75 is a fair estimate of their value.

Fifth Floor—BOWMAN'S.

Dplon Skirts

**Said to Be the Finest Made in
New York. Sold Only Here
in Harrisburg**

The new models arrived here yesterday. The smartest we have ever shown. And it is said that separate skirts will be very popular this coming season. These are in fine gabardines, poplins, prunella and coverts. Widths vary from two and a half to three and a half yards. Plonsky make.

Prices Range \$5.00 to \$15.00

**We Opened To-day Our Last
Shipment of the \$15.00
Plush Coats**

It is not likely we will succeed in getting more of them as the materials—the good grades—have about disappeared from the market. No maker who has the plush will make them and sell them so that we can retail them for \$15.00. We were only able to sell the kind of coats we sold at \$15.00 by the misfortune of a good maker who over-bought his capacity to sell. He needed the cash and we took his coats in exchange at a very low price. But there are thirty of them here for to-morrow and there are many very good styles. All sizes up to 46 among them. Belted all the way around—half belted—flared models, Foxtrot models, College models.

All at One Price, \$15.00

Second Floor—BOWMAN'S.

**Introducing New
Organdie Raye
Special 12½c**

There is every indication that the new and sheer wash fabric will be most popular this coming Spring. Satin stripe and floral pattern, in blending shades of pink, light blue, green and white. Because of a large purchase, we can sell this at 12½c yard, instead of 25c.

Main Floor—BOWMAN'S.

**Specials in
DOMESTICS**

Sheets at 79c—regularly 95c—made of Utica muslin; size 81x90 inches; marked "O"; slightly soiled.

Pillow Cases to match Utica sheets, 42x36-inch at 17c each; 45x36-inch at, each 18c

Embroidered Pillow Cases, 19c each—regularly 25c—scalloped edge; size 45x36 inches.

Dress Gingham at 8c yd.—regularly 10c and 12½c—new Spring line in fancy plaids and stripes.

Calico at 5c yd.—Simpson silver gray calico cut from full pieces; 30 different patterns to select from.

Main Floor—BOWMAN'S.



**Women's Fine
Shoes
\$3.00 & \$3.50**

\$1.49

We have taken three hundred pairs of regular stock shoes from off our shelves and placed them among the \$2.50, \$3.00 and \$3.50 shoes we have been selling for

\$1.49

thus completing the sizes that were missing, and greatly strengthening the entire lot.

You've never been offered greater shoe values before, and the probabilities are you never will again, as the leather alone in these shoes is worth more than \$1.49 at present market prices.

Third Floor—BOWMAN'S.

Soap Specials

10 cakes Swift's Pride Soap, 29c
10 cakes Ivory Soap, 38c
10 cakes P. & G. Naphtha Soap, 38c
10 cakes Fels Naphtha Soap, 38c
2 cans Old Dutch Cleanser, 15c
10 rolls Toilet Paper, 25c
No phone orders for soap will be sent C. O. D.

BOWMAN'S Basement.