

THE NEW 4-CYLINDER REO

Every Person Wanting an Automobile Under Fifteen Hundred Dollars

should ask any and every person knowing anything about an automobile, if they don't think the Reo is the best car known. We know that ninety-eight out of every hundred persons approached, whether competitive dealers, owners of cars or Reo owners, will say that it is. Hundreds and hundreds of Reo owners have made this same statement so often to the general public that it is an acknowledged fact that more service is gotten out of the Reo than any other make of car. With a four cylinder, five passenger 115-inch wheel base car, equipped with nobby tread tires, one-man top, the best electrical system on earth and everything else the best at \$1050.00, and a six cylinder car with 55 H. P., 122-inch wheel base, nobby tread tires, the same good electrical system, Cantilever springs, gear driven tire pump and speedometer, worm level driving gear, full floating rear axle, double exhaust manifold, and with as much quality as a car selling for a great deal more, for \$1385.00, are certainly such buys that our allotment of four hundred cars for this territory will not reach around. Start the ball rolling and ask these questions. We know what the answers will be.

HARRISBURG AUTO CO.

THIRD AND HAMILTON STREETS

EMPIRE AGENCY AT PENBROOK GARAGE

Two Touring Cars and Roadster in Line Selling Below One Thousand Dollars

H. A. Fishburn, manager of the Penbrook garage, has assumed the agency for the Empire motor cars in this territory. The Empire for 1915 continues the one chassis policy, with a marked reduction in price and introduction of a new type in an electrically started and lighted streamline touring car selling for less than one thousand dollars. This gives the company a line of three distinct cars for the year, a roadster being carried with the two touring cars.

The new touring car is one of striking beauty—with its streamline body and many points of continental design as well as electric starting and lighting it stands out as a harmonious blending of European beauty with American convenience. It has everything to be desired for comfort, safety and convenience of the motorist. Seats are set low, allowing backs of more than ordinary height. Upholstering throughout Turkish type of selected leather. All door hinges are concealed, and with the body tapering back from cowl gives a most pleasing bus side effect, completed by the limousine back. Roll crown fenders add to the general attractive appearance. Starter button is of plunger type on dash, while all other instruments, such as speedometer, carburetor adjustment, dash light, ignition switch, battery indicator, light controls, etc., are assembled on an instrument board electrified by the cowl. Remy one-unit electric system with starting, generating and ignition of magneto type with spark advance, is fitted. Not only the car itself but also the entire electric equipment, including oversize storage battery is covered by a broad one year's guarantee. Nonskid tires are furnished on rear wheels as standard equipment, adding an essential feature of an in warm climate of latest solid post, rain vision ventilating type, while all other equipment is complete in every detail. This model is now here for demonstration purposes.

A big car at exceptionally low price for a car of its size and power is offered in the Empire standard Model 31 nonelectric car which has complete equipment, including mohair top, topboot, curtains, Stewart speedometer, Prest-o-lite tank, gas headlight, lights and tail lamps, demountable rims, etc. This car is in its fourth season, newly improved and refined in many points of detail. The option of either electric or standard car is available. In addition to the touring models the line includes a roadster model furnished either with standard equipment or with electric starting and lighting.

These cars are but a new series of the one sturdy Empire chassis on which these various body types are mounted. The wisdom of this chassis, with accrued details of refinement, has been continued for four seasons without change in any basic principle of construction, is proof of the splendid service the car has given in the hands of owners. The entire chassis is one of exceptional simplicity. It has unit power plant with the four cylinder motor of 3 1/2 inch bore and 4 1/2 stroke. The remainder of the chassis is built extra heavy and sturdy for a car of this size and weight, all gears and shafts being well oversized. The wisdom of providing such factor of safety has been shown in the reputation for sturdiness won by the Empire. In touring cars the gasoline tank is located under the front seat, while in the roadster it has place in the cowl.

On these cars the company will double production over last season to meet the demands of its dealers both at home and abroad. The Empire is now represented in practically every part of the world, a splendidly exported business having been built up within the last few years.

CLAIMS HIGHEST MILEAGE Theodore J. Werle, traveling lecturer for the Wisconsin Anti-Tuberculosis Association of Milwaukee, claims the highest motorcycle mileage record of any rider in the Badger State. Werle has used a motorcycle for the past three years in traveling about the country preaching the gospel of health. In the recent past he represented in practically every part of the world, a splendidly exported business having been built up within the last few years.

RECEIVES CROSS FOR BRAVERY Adolph Waltz, a motorcyclist of Saginaw, Mich., was recently decorated with the Iron Cross for bravery in the German army. Waltz's duties as a motorcycle scout were to carry messages between the aviation corps and headquarters. Once, in going to the general's headquarters, Waltz's machine was shot from under him. He rolled into a ditch and was left for dead. After recovering from the shock, however, he crawled along the ditch until out of danger, then ran to headquarters and delivered the message. His bravery permitted reinforcements to be sent in time to save two German regiments from annihilation.

BEATS "SPECIALS" J. Warren Mooney, on the staff of Walter E. Hapgood, sport editor of the Boston Herald, finds that with the aid of a motorcycle he can put it all over his rivals in gathering news. Mooney says that on the two-wheeler he can cover twice as much territory in practically half the time that is required by other means of travel. Last Fall he returned upon his motorcycle from the Andover-Exeter football game in what is believed to be a record for the Andover-to-Boston run, arriving at the newspaper office long in advance of the first of the special trains.

18 Local Unions Form Federated Trades Council

Permanent organization of the Harrisburg Federated Trades Council under a charter of the American Federation of Labor has been effected. Officers elected are Levi Hamaker, president; J. R. Kohr, vice-president, and Charles Grier, secretary and treasurer.

The new organization proposes to have a more centralized control of labor matters and a strong council to look after all questions that cannot be adjusted by individual unions. All labor organizations affiliated with the American Federation of Labor, excepting the railroad brotherhoods will probably be included in the new body. The next meeting will be February 8.

MISS WASHINGTON DIES Funeral services for Miss Fredericka Washington, aged 16, 104 Cherry street, who died at her home yesterday morning, will be held in Newville tomorrow afternoon, the Rev. W. H. Marshall officiating. Burial will be made in the Newville Cemetery.

A SEVENTEEN-PASSENGER REO



The banners on the car, shown on the picture, are a trifle misleading as this seventeen-passenger car isn't a stock model "Reo the Fifth," as one might infer. Neither is it built on a standard Reo Touring Car chassis.

The car shown is one of a flock of twenty-four owned by the San Francisco Sight Seeing Company, the concern which has the sight seeing privileges of the Panama Pacific Exposition. The bodies are especially made in San Francisco to meet specifications submitted by officials and are painted the official colors.

The chassis is a stock model Reo two-ton truck and the normal load of seventeen persons is a very light one for this truck to carry—averaging only about one and a half tons of passengers.

Reo trucks were selected after the most careful inspection of a great many makes and after the most severe tests, as these trucks must keep to a schedule just as accurate as that of a railroad.

How to Start the Motor on Wintry Mornings

"When the motor refuses to start these cold mornings, the trouble can be traced usually to the carburetor," states Roberts & Hoin, distributors in this territory for the Haynes, America's First Car. "More gasoline is required in cold weather than in warm weather, and the adjustment should be made accordingly. The reason is simple when it is considered that the richer the mixture of gas going into the cylinders, the more heat will be generated.

"The outside air is much colder, and consequently the heat will radiate much faster from the cylinders than in warm weather. To get the same results from the motor, this extra loss of heat must be made up by supplying an extra amount of fuel. The cooling system would also receive damage arising from freezing. The radiator cells have very thin walls for rapid cooling, and the lightness is liable to develop leaks. The system should be cleaned out with a solution of ordinary washing soda and water, and then an antifreezing solution of some sort used.

Haynes Automobile Company has found the solution of calcium chloride in water to be very satisfactory under all conditions. Frequent use is expensive and requires frequent renewal. Use chemically pure calcium chloride. The commercial form usually contains acid that is injurious to the metal parts. Get a strip of blue litmus paper from the drug store, and if it turns pink in the calcium chloride solution, put in enough ammonia or soda ash until it remains blue.

The amount of calcium chloride to use may be found from the following table:

Table with 2 columns: Pounds of Calcium Chloride per gal., and Freezing Point. Values range from 18.0 above zero to 33.0 below zero.

MOTORCYCLE NOTES

Sanction has just been issued by the Federation of American Motorcyclists for a 100-mile motorcycle meet to be held at Galesburg, Ill., on July 5.

The Misneva Motorcyclists' Association was recently formed at Marion, Ind., with thirty-two charter members.

The Capital City Motorcycle Club of Sacramento, Cal., is making an effort to secure the 100-mile national championship for its annual Spring meet.

In 1914 there were 8,063 motorcycles registered in Kansas, as against 7,450 the previous year.

During December there were 388 membership cards issued by the F. A. M. Of these, 203 were affiliated, 47 unaffiliated, and 133 renewals.

It has been decided that the next National Motorcycle, Bicycle and Accessories Show will be held in the Coliseum in Chicago, Sept. 20-25.

Tri-State is planning to have a tri-State reunion of motorcyclists during the coming summer.

In planning for the coming season's events, the Worcester (Mass.) Motorcycle Club has set Patriot Day, April 19, for the opening run, which will be to Concord, Lexington and return.

M. P. Buckley, a plumber of Trenton, N. J., uses a motorcycle to carry supplies to his workmen in various parts of the city.

Though less than two months old, the motorcycle club of St. Paul, Minn., has reached a membership mark of 100. It is the purpose of the club to raise this to 250 by next fall.

A new motorcycle club has been formed in Cincinnati, Ohio, known as the Queen City M. C. It has 22 charter members. The organization is planning to affiliate with the F. A. M.

A. Y. Letts, of Hoboken, N. J., has his motorcycle help him earn quite a bit of money this winter. He attached the motor to a skate sharpener, with which he has kept the skates of the community in good condition.

Frank Middleton, of Atlantic City, N. J., whose business is the painting of show cards and large signs, uses a motorcycle to take him over the city in quest of new business.

A retail shoe concern of Chicago has used a motorcycle in working out a novel advertising scheme. Mounted on the two-wheeler is a traveling show case in which the latest models of shoes are displayed. The motorcycle is also used for practical delivery purposes.

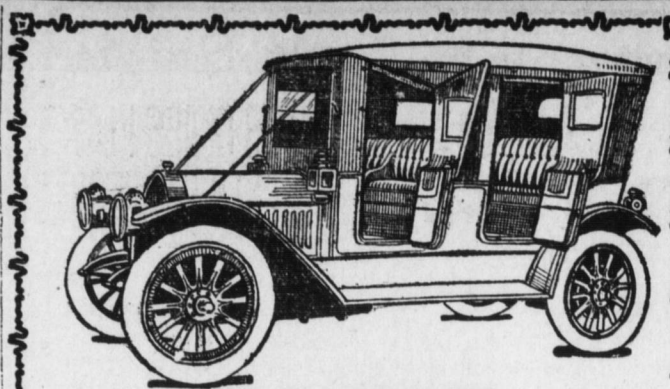
To say that I am pleased with my motorcycle," says Louis F. Bradburn of Canandaigua, N. Y., "is putting it mildly. I'm tickled to death with it." Nearly 200 riders and their friends participated in the recent annual banquet of the Rockford (Ill.) Motorcycle club.

WHOLE FAMILY RIDES

One motorcycle dealer who follows his own teachings is James A. McQueen, of Schenectady, N. Y. McQueen says that he rides his two-wheeler practically 265 days in the year. And what's more, "Mrs. Mac" and their two children are strong advocates of the motorcycle. On Christmas Day the McQueens made a 44-mile sidecar trip into the country, much of the distance being through deep snow. And they all enjoyed every minute of the outing.

MOTORCYCLE INCREASE

22 PER CENT. The census of 1914 shows 233,351 motorcycles in use in Great Britain. Of these 204,365 were in England, 17,780 in Scotland and 11,236 in Ireland. In the county of London, England, alone there were 33,360 machines registered, showing an increase over 1913 of practically 22 per cent.



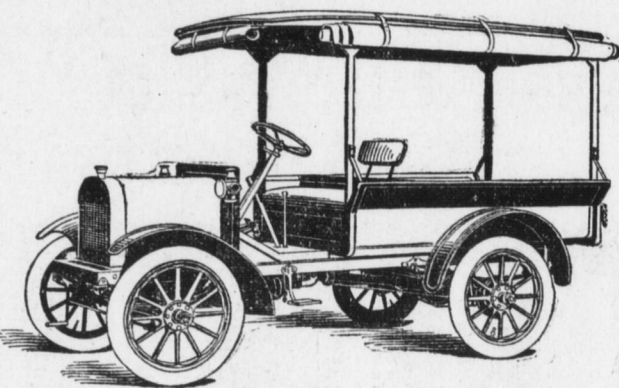
KELLY AND TOWERS PATENT

Auto Door Opening Side Curtain

All Conveniences of a Limousine at a Very Small Cost

We use the old curtains with this attachment. Can be taken off and put on in the same space of time as ordinary side curtain.

Sefton Carriage Works 1203-07 Capital Street



Vim 1,000 lb. Delivery \$635 to \$725 Jeffery Pleasure Cars \$1450 to \$3700 Pullman Pleasure Cars \$740 and \$2350 Jeffery 2 and 4-wheel drive trucks, garage, repairs, painting and supplies.

Bentz-Landis Auto Co. 1808-10 Logan St. Harrisburg, Pa.

Empire Tires 15--Days More--15

Starting Feb., 1st. 20%--Reduction--20% 5000 Miles Guaranteed 5000 Front-Market Motor Supply

MILLER Geared TIRES to the Road Add the "Class" Mark to Your Car STERLING AUTO TIRE CO., 1451 Zarker Street THE VULCANIZERS

EXCLUSIVE DISTRIBUTOR OF DIAMOND TIRES

We Adjust Any Make of Tires PLANK - WERNER TIRE CO. Fourth and Chestnut Streets Mulberry Street Bridge Phone 3359 Chains, Brake Lining, Auto Supplies, Ford Wheels

President Delivers Reassuring Message on Business Outlook

Special to The Telegraph Washington, D. C., Jan. 30.—President Wilson delivered a reassuring message to "big business" yesterday. The message was contained in a speech to the American Electric Railway Association, which is holding its midwinter meeting at the New Willard Hotel. In substance the message was that suspicion in the business world has been cleared away, and "big business" has nothing to fear from the government, because it was big as long as it obeyed the "rules of the track."

At the outset of his address, the President said it seemed to him that he could say with a good deal of confidence that "we are upon the eve of a new era of enterprise and of prosperity." Enterprise had been checked for about twenty years, he asserted, because men did not know what was to happen to them. Mr. Wilson paid tribute to the honesty and public spirit of the great majority of businessmen. He emphasized that in his opinion the great force of a country like this had to pull together. The members of the association gave the President a rousing reception. Many of his expressions were delivered in a droll way that brought much laughter. Nothing was more appreciated by the audience than the President's use of sporting terms in illustrating what he meant when he spoke of playing the game according to the rules. Those who heard him frequently grew wild in their enthusiasm.

CHALMERS DODGE BROS. and SAXON Motor Cars KEYSTONE MOTOR CAR CO. 1019-25 Market Street

PAIGE GLENWOOD "36" 5-passenger touring, \$1075 FAIRFIELD 6-16 7-passenger, \$1395 The Paige Four "36" is a car that created a record for excess value from the first day of its announcement. This year it retains every excess value feature at a price \$200 less than last year's. The Paige "Six-46" has the most distinctive and artistic body design in America; Continental motor; cantilever spring suspension; Gray & Davis lighting and starting system; Bosch magneto; multiple-disc cork-inset clutch and Rayfield carburetor. "The Standard of Value and Quality." RIVERSIDE GARAGE BELL PHONE 3741R GEORGE R. BENTLEY, Proprietor REAR 1417 NORTH FRONT ST.

King Oscar 5c Cigars Continue the popular nickel smoke because we continue to make them of the same good Havana and domestic tobacco that started them in their successful career 23 years ago. Regularity of quality counts for more than "fancy names and fussy packages." Smokers can't enjoy such things. They want good tobacco.