

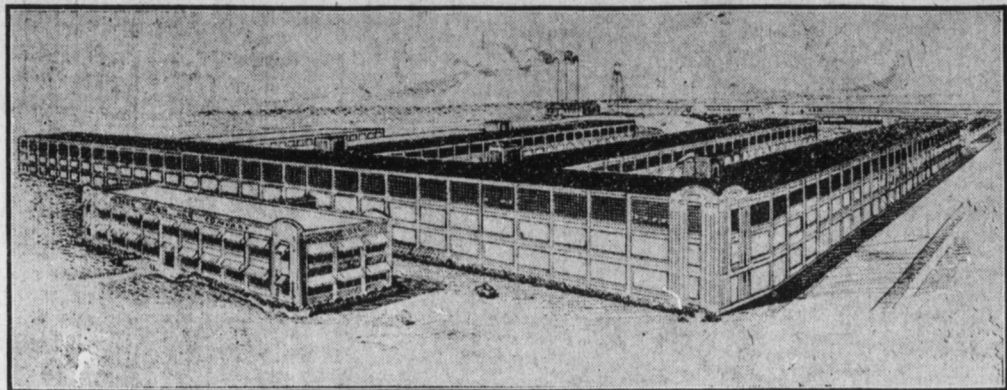
LIGHT SIX IS EASY TO START IN COLD

Morton Explains Advantages of Chalmers Circulating Devices on Winty Days

"One of the strong points of the Chalmers 'Light Six' is that in starting up a cold motor, the water does not circulate through the cylinders until it becomes hot," said Robert L. Morton, local manager of the Chalmers agency. "As a result the motor quickly arrives at the temperature where smooth operation and maximum efficiency are obtained."

"Where motors are equipped with rapid circulating devices the cold water is passed through the system for quite a while after the motor starts. This keeps the motor oil for a considerable length of time. To overcome this, a thermostat control is sometimes used in the cooling system to check the flow of the water until it becomes heated in order to warm up the motor more rapidly."

"With the Chalmers thermo-siphon system exactly the same results are obtained without all the complications of the thermostat control. All extra mechanism, including the pump, is eliminated. "The water lies still until the engine warms it up and causes it to move. The hotter the engine becomes, the faster the water circulates. In warm weather, when the engine is naturally hotter, the water circulates faster than in cold weather, thus cooling the motor more efficiently, just as it warms the motor better in cold weather. "Instead of a complicated device, or device, liable to get out of order the Chalmers system takes advantage of a natural law that never varies."



A third story added to the present Hudson factory will give a total floor space of eleven acres. The building is 2,200 feet by 62 feet. The entire structure is of reinforced concrete and steel.

Lincoln Highway the Shortest Route to Coast

S. D. Waldon, vice-president of the Packard Motor Car Company, and famous for his terrific driving of experimental cars in forework on new models, has rapidly traversed all the motor trails to the Pacific coast, and pronounces the Lincoln Highway by all odds the shortest and best way to cross the continent. For those harder adventurers, who crave the experience afforded by more rugged country, Waldon has an authoritative word about the trails of the Southwest. After a careful study of all the routes from Santa Fe to Los Angeles, he recommends the one via Holbrook, Flagstaff, Needles, Barstow and San Bernardino, 1,002 miles in extent, as the safest and most convenient for motorists.

An alternative route through the Southwest is by way of Cooley, Phoenix, Blythe and Mecca, comprising 958 miles. A third lies by way of Springerville, Cooley, Phoenix, Yuma, El Centro and San Diego, and is 1,385 miles long. The latter was the route covered by Waldon and his companions on their latest return from the coast. The most remarkable scenery is encountered between Springerville and Phoenix, but the trail through the White Mountains is practically impassable most of the year, while the detour via Snowflake is obstructed by huge boulders. The unusual road performance of Waldon and his touring mates on their latest experimental trip included covering 1,000 miles between Albuquerque and Kansas City in three days' driving. Motorists who know this country will also appreciate the significance of a single day's run on which these hard drivers ate breakfast at Trinidad, Col., lunch at La Junta, dinner at Syracuse, Kan., and slept at Dodge City.

Mitchell Car Will Be Represented in This City

Ream & Son, with offices at 108 Market street, have assumed the agency for the Mitchell car in this county, as well as for Lebanon. They have had the selling rights for the latter county for some time, and when the opportunity presented itself to add the county to the territory they availed themselves of the chance. The Mitchell car is made by one of the oldest and most substantial manufacturing concerns in the country. The local office will be in charge of D. R. Ream. The new Mitchell light six and light four will be featured.

THE NEW HUDSON FACTORY

Directory of Motor Car Owners in This Vicinity

J. Clyde Myton, secretary of the Motor Club, has compiled a convenient directory containing all the names of motor car owners in Harrisburg and vicinity. The book has 2,500 names. Eleven hundred and fifty of these names are owners of motor cars in Harrisburg. This does not represent the total number of cars because some own several automobiles. This book will be invaluable to those who have need of a reference guide of this nature. A great deal of labor was necessary to copy these names from among the hundreds of thousands in the state registry book. The directory includes the surrounding towns within fifteen miles, as well as Carlisle and Mechanicsburg.

INCREASES BODY LENGTH

Greater Space in Tonneau of Oldsmobile Light Four Further improvements have been made in the light four Oldsmobile and shipments of the new cars are on the way to distributing centers throughout the country. The manufacturers explain that these improvements, while few in number, are quite important in that they add materially to the riding qualities and the roominess as well as the outward comeliness of the car. In the main they have to do with the body, increasing to a noticeable extent the space in the tonneau. More leg room is afforded by an addition of three inches to the length of the body, which, however, is not obtained by any lengthening of the wheel base, but rather by adding slightly to the body in the rear.

The radiator has been increased in height, giving more room under the bonnet and a higher and more massive appearance to the front end of the car. It was stated by J. V. Hall, sales manager of the Olds Company, that the new changes in their light four model relate principally to the comfort afforded passengers and the outward appearance, and do not affect in any way the mechanical features of the car.

CADILLAC EIGHT HAS BUT ONE CARBURETOR

Many people who have inspected the Cadillac Eight have expressed surprise upon seeing but one carburetor for the eight-cylinder motor. The carburetor is set above the center of the engine. One feed pipe leads from the gasoline tank; two intake pipes lead from it, one to each block of four cylinders. As heretofore, the carburetor is of Cadillac design and manufacture. It has but one float chamber, a single spray nozzle and is but a trifle larger, in fact, than the instrument used on the last four-cylinder Cadillac. The intake piping arrangement is such that it insures absolutely uniform distribution of gas to all cylinders. None of the cylinders is starved for gas, because, although there are eight cylinders, the problem of carburetion is no more difficult than presented by a four.

JOHN D. OBJECTS TO TAXES

Cleveland, Ohio, Dec. 19.—John D. Rockefeller, through his attorneys, today filed in United States District Court a petition asking that an injunction be granted restraining County Treasurer O'Brien from collecting \$311,040.337 assessment placed on Rockefeller's holdings by the Cuyahoga county tax commission.

BRACELETS

For Ladies, from \$2.00 up. For Children, from 50c up. JOS. D. BRENNER Diamond Merchant and Jeweler No. 1 North Third St.

CONSTRUCTIVE POLICY IS PREDICTED BY REA

"Penns." President Issues Statement Commenting on Freight Rate Case

Philadelphia, Dec. 19.—President Samuel Rea of the Pennsylvania Railroad Company in a statement today said that he regarded the railroad rate decision handed down by the Interstate Commerce Commission yesterday as the beginning of a broad, constructive policy in railroad regulation. The statement says: "I regard this decision as the beginning of a broad, constructive policy in railroad regulations so imperatively required. It certainly indicates that the commission has been seriously impressed by actual railroad and financial conditions, and we recognize that the commission has carefully considered the entire situation and rendered what it believes to be a fair and equitable decision. The decision, however, grants an increase of only about 50 per cent. of the freight business of our system and is not so far reaching as the railroad and State, to be necessary, therefore the railroads, as the commission emphasizes must continue their efforts to conserve and augment their revenues from the sources the commission previously recommended."

"We desire prosperity but it is impossible for the county to prosper while railroad revenues and credit are inadequate and therefore the increased rates should be generally helpful. Relying on the protection of public regulation, we will utilize the additional revenue in continuing our lines and in the best possible public service and in sustaining our credit on a sound basis. "The federal government should, in the same spirit, award the railroads the admittedly just compensation, so long withheld, for the carriage of mails and parcel post; and the citizens should see to it that the legislature, federal and State, relieve the railroads from enforced wasteful expenditures. Under such a helpful policy public regulation rests on a solid foundation, and confidence and prosperity will be greatly encouraged."

The federal government should, in the same spirit, award the railroads the admittedly just compensation, so long withheld, for the carriage of mails and parcel post; and the citizens should see to it that the legislature, federal and State, relieve the railroads from enforced wasteful expenditures. Under such a helpful policy public regulation rests on a solid foundation, and confidence and prosperity will be greatly encouraged."

Insanity Is Claiming Soldiers in Trenches

Southampton, Dec. 9.—(Correspondence of the Associated Press).—Insanity and nervous prostration are claiming large numbers of the allies who have lain for weeks under German fire in the trenches about Ypres. The insanity wards in the big government hospital at Netley are filled to overflowing and all the hospitals in the south of England have many patients who suffered absolute nervous collapse and have been sent back to England for treatment. Soldiers on rare occasions have been found shooting their own hands and feet, or exposing their arms and hands to the fire of the enemy that they might get wounded, which will relieve them from service in the trenches. This is attributed to shattered nerves in many cases. Bad teeth are playing havoc with the English troops exposed to cold and dampness in the trenches. Many dentists have been sent to the front to treat defective teeth which have caused neuralgia and disabled men otherwise sound.

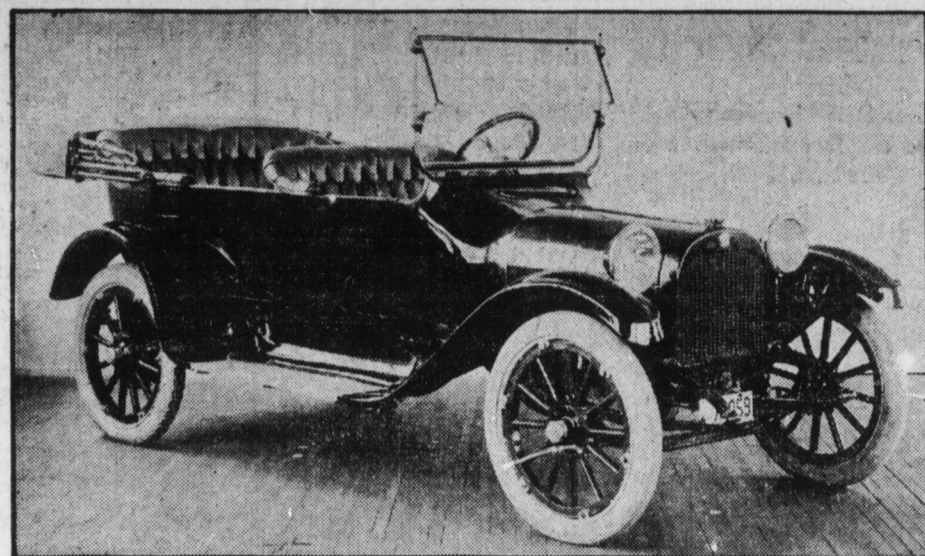
THE GERMAN ARMY'S MOVIES

The moving picture has done its part toward achieving the remarkable preparedness and efficiency which the German army has developed. In Germany, moving pictures are widely used to instruct recruits, just as in this country large industrial concerns are beginning to make use of moving pictures to train their employees in the most efficient methods. The young German recruit receives his initial instruction from the movies, learning of such minor duties as mounting guard, making camp, bayonet drill, and acting as vedette. The scenes in the films are acted out by veterans and the example of the experienced soldier in thus always available in schooling the recruit. Moving pictures are largely used in giving instruction in special branches of the military service. Thus the correct methods of bridge building, of constructing trenches, of erecting barricades, of laying mines by special films. Moving picture of the theaters manufacturers are also exhibited in theaters throughout the country as a means of popularizing the army.—The American Boy.

LEGAL NOTICES

SEALED PROPOSALS will be received until 2:00 P. M., December 23, by the undersigned at his office, Calder Building, for the construction of a Golf Club House in Reservoir Park. Plans and specifications may be seen at the above office. All bids must be accompanied by a certified check or bond, approved by the City Solicitor, for \$200, and a final bond of 25 per cent. of the contract price will be required of the successful bidder to secure faithful performance of the contract. The right is reserved to reject any and all bids. M. HARVEY TAYLOR, Superintendent of Parks and Public Property.

SEALED PROPOSALS will be received until 2:00 P. M., December 28, by the undersigned at his office, in the Calder Building, for the construction of a reinforced concrete bridge over Spring Creek, near Cameron Street. Plans and specifications may be seen at the above office, which may be seen after December 23, or upon application to the undersigned. All bids must be accompanied by a certified check or bond, approved by the City Solicitor, for \$200, and a final bond of 25 per cent. of the contract price will be required of the successful bidder to secure faithful performance of the contract. The right is reserved to reject any and all bids. M. HARVEY TAYLOR, Superintendent of Parks and Public Property.



Dodge Bros. Motor Cars

We are glad to advise that about January 1st, 1915, we will receive our first DODGE CAR.

This Car has unquestionably set a new standard of Motor Car value for the future.

Touring Car and Roadster Price, Fully Equipped, \$785.00

F. O. B. Detroit

Keystone Motor Car Co.

1019-1027 Market Street

WOMEN DEMONSTRATORS

Vocational Federation Endorses For Motor Car Salesladies At a recent meeting of the Vocational Art Federation in Chicago, some striking testimonials were given to the plan of Walter E. Flanders, president of the Maxwell Motor Company, to employ women demonstrators to sell to women prospects, on an "equal pay for equal work" basis. Mrs. T. Vernet Morse, Honorary President for life of the Federation, said, "The first inception of the Vocational Art Federation came from a desire to help women enter every field or endeavor on an equal basis with men. I am pleased, as founder of the Federation, to endorse the Women's Advisory Committee of the Maxwell Motor Company, which has been organized for the purpose of placing vocations for women on an equal basis with those of men." (Signed) T. VERNETT MORSE, Chicago, Ill. Mrs. Mary E. McBowen, head president, University Settlement of Chicago; Mrs. Anna E. Nichols of the Civil Service Committee for Cook County, and

assistant judge of the Juvenile Court; Mary M. Bartelme, Chicago, each gave personal endorsements to the plan. Women all over the United States are taking great interest in the plan and many are anxious that the experiment have the best possible assistance to make it a success. The plan does not eliminate men from the field whatsoever. It means the opening of a new field for women in which they are employed to sell cars to women.

The "Sterling" Mark on a Tire Repair

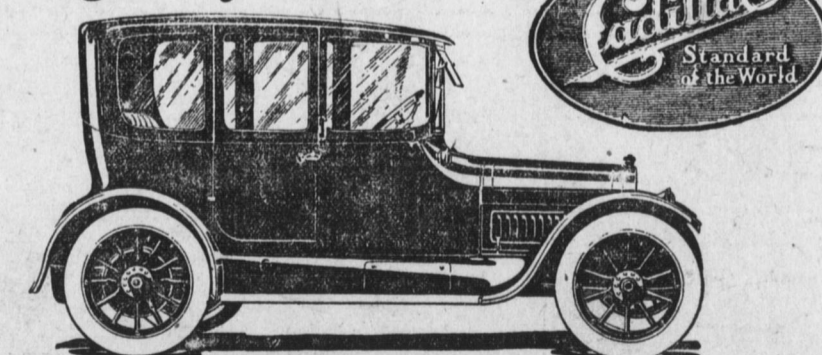
stands for the highest grade in materials, the most expert workmanship and a guaranteed result in positive service.

Make Us Prove It

STERLING AUTO TIRE CO., 1451 Zarker Street MILLER TIRES—Made Strong, Last Long. The cog-wheel tread on the Miller Non-skid gears your car to the road.

Inside Drive Limousine Demonstrator

Eight Cylinder



FIVE-PASSENGER SEDAN, \$2800.

Take a Cold Weather Ride in Comfort

We are now using a new eight-cylinder Cadillac closed car for demonstrating. The perfect freedom from noise or vibration is a revelation and the absence of heavy wraps and annoying curtains gives a sense of relief and pleasure not before dreamed of for a cold weather ride. Let us show you the smoothness, slow throttle, hill work, and acceleration of this wonderful car by giving you a ride in a closed body, where you can best judge these points. Now is the time also to place your order for Spring. Never was a car in so great demand.

CRISPEN MOTOR CAR CO.

413-417 South Cameron Street

HAYNES LITTLE SIX \$1485

Reo Trucks AND Pleasure Cars HARRISBURG AUTO CO.

Automobile Owners SAFETY FIRST

Let us make all roads smooth—nature's way—by applying to your car Bound and Rebound Shock Absorbers

Add 100 per cent. to your comfort, save 20 to 40 per cent. tire and gasoline cost, increase the life of the engine two to three years.

A. M. LEVERING

501 Kunkel Building Harrisburg, Pa.

Coupon: Free demonstration and particulars furnished upon return of this coupon with name and address. Name: Address:

The Hupmobile CAR OF THE AMERICAN FAMILY



\$1365

F. O. B. Detroit Touring Car with Sedan Top; Roadster with Coupe Top, \$1325 F. O. B. Detroit



ENSMINGER Motor Company Corner Third and Cumberland Streets Harrisburg, Pa. Bell Phone 931J.

REAL Comfort In This Car

The sedan and coupe tops for the new Hupmobile turn open summer cars into luxuriously comfortable closed winter cars.

More than that, they give you the effect and the benefit of two cars, at a cost of little more than one.

Thus is partially explained the excellent fall business we are doing.

Almost every Hupmobile buyer orders one of the demountable tops as a matter of course, seeing ahead a winter of really pleasant driving.

Though readily detachable, these tops are finished within with all the trimness that characterizes the costly limousine.

They are free of rattle, most substantially built, with best coach glass windows, wide doors and plenty of headroom.

Where women and children are concerned, their cozy protection from wind and rain and storms makes them a necessity.

A touring car fitted with the sedan top is now on display. Please call and see it.