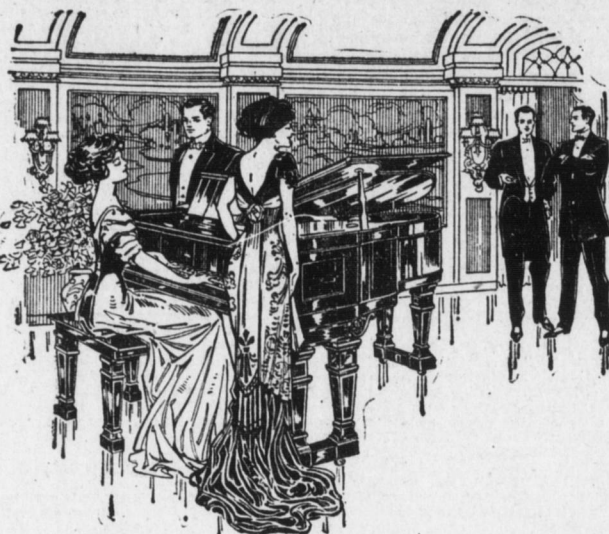


Have You Considered as a Gift to Your Own Household the

Chickering Piano

What piano gift could be more distinctive, more elegant, more beneficial, more permanent, more satisfying?

Yes, it is the most costly of pianos, but it will carry into your home an atmosphere that you cannot buy with any other piano, of any other name, at any other price, however great.



Uprights \$500 to \$600 Grands \$650 to \$1550 Terms: Cash or Partial Payments All in Strict Confidence

Pianos of Scarcely Less Fame at Lower Prices

Whose quality is sure, and whose reputation is established. The

- Everett \$500 to \$850
Hardman \$425 to \$500
Bush & Lane \$400 to \$500
Poole \$350 to \$475
Merrill \$350 to \$450
Kimball \$325 to \$450

Any of which you may be justly proud to own, and may now choose and have set by for Xmas by making the required cash deposit, which is quite nominal; balance monthly, quarterly or otherwise.

Player-Pianos of Acknowledged Leadership

Makes that have passed the experimental stage and have stood the test of time. The

- Chickering-Angelus \$1050
Knabe-Angelus \$1050
Emerson-Angelus \$825
Janssen-Angelus \$700
Autotone \$550 to \$650
Autopiano, Playtone and Pianista \$395 to \$550

A practical demonstration will easily convince you of their merit. Be sure to ask about our music roll library privileges and let us explain our Liberal Payment Plan.

Order Your Xmas Victrola or Edison Disc This Week

Another large shipment of the latest improved models has just arrived. Come in and hear them demonstrated side-by-side. All prices \$15 to \$275. Cash, or liberal Xmas terms.

STORE OPEN EVENINGS UNTIL 9 O'CLOCK

J. H. TROUP MUSIC HOUSE

Troup Building

15 South Market Square

RAILROAD NEWS
JEREMIAH C. LONG JOINS PENSIONERS

Shopman Who Started His Career in Franklin County, Is Well Known Here

One of the four shopmen retired at Altoona yesterday was Jeremiah C. Long, a native of Greencastle, Franklin county, and well known in Harrisburg. Mr. Long prior to taking up his duties in the Pennsylvania Railroad shops at Altoona was employed by the Baltimore and Ohio and the Cumberland Railroad companies.

At the beginning of the Civil War Mr. Long was engaged in home duties and remained at home. During the invasion of Pennsylvania by the southern armies Long was captured and taken prisoner. He was imprisoned for four hours and later released and was captured by Stewart's cavalry until identified as a citizen of Greencastle. On February 14, 1864, he enlisted in Company K, Second Regiment, Pennsylvania Cavalry.

Mr. Long went to Altoona during November, 1882, and for thirty-two years has worked for the Pennsylvania Railroad Company. What the Men Want.—A summary of the demands of the employees of the Western railroads now before arbitrators at Chicago include: "1. One hundred miles or less, five hours or less, will constitute a day's work in all classes of passenger service. All mileage in excess of 100 miles shall be paid for pro rata.

Other demands concerned overtime and were technical in their nature.

Contrary to expectations, the Interstate Commerce Commission will not suspend passenger rate increases, effective next week in the central freight association territory.

Seven special trains with Ohio corn boys, enroute to Washington, D. C., passed through Harrisburg early this morning. Edward F. McKenzie, a Pittsburgh division engineer on the Pennsylvania Railroad, received a prize for the best written story on "Keeping a Good Lookout on a Locomotive."

Special Service Engineer Samuel Hertzler, of the Middle division, is a busy man because of the many special trains. Needed to make repairs on passenger and freight cars, 250 suspended men were called back to work yesterday at Altoona.

There were retired and placed on the pension roll during November sixty employees of the Pennsylvania Railroad system. Of that number two on the lines east had been in the service over fifty years. In a statement just issued it is shown that since the establishment of the retirement plan amounting to \$1,900, there has been paid out by the Pennsylvania Railroad system \$10,563,537.42, of which sum \$7,985,922.24 was on lines east of Pittsburgh and \$2,577,605.18 on lines west of Pittsburgh.

At the beginning of the past month there were 4,290 employees on the roll of honor. The Chicago and Alton Railroad Company reports gross income in the year ended June 30 of \$14,156,275, a decrease of \$1,098,589. Net revenue from all sources was \$1,461,559, a decline of \$475,234.

Petitions for an increase in passenger rates to 2 1/2 cents a mile, effective throughout New England and to become operative January 1, will be filed with the several regulative commissions by the Boston and Maine, Boston and Albany, and New York, New Haven and Hartford Railroad Companies to-day. D. H. Zorger, brakeman on the Philadelphia division of the Pennsylvania railroad, with his family, has returned from a visit through the West touching Willis, Kansas, and Clinton, Illinois.

Harrisburg lodge No. 383, Brotherhood of Railway Trainmen, will celebrate its twenty-fourth anniversary December 20 at a meeting in Sible and Clark's Hall, Third and Cumberland streets. An excellent program will be given with refreshments to the families and friends of its members.

Standing of the Crews
HARRISBURG SIDE
Philadelphia Division—2 crew first to go after 3:30 p. m.: 127, 105, 113, 107, 109, 120.

Engineers for 114, 109, 127. Firemen for 107, 114, 120. Conductors for 105, 109, 127. Flagmen for 107, 114, 120.

ENOLA SIDE
Philadelphia Division—22 crew first to go after 3:45 p. m.: 210, 238, 232, 244, 247, 227, 239, 246, 228, 228, 241.

BOER TACTICS AND THE EUROPEAN WAR METHODS.

The problem of controlling and directing the individual units that make up the immense masses of men that engage in the battles in Europe has been the subject of serious study for years in the staffs of the rival armies. An English military authority in the Encyclopedia Britannica points out that "so far from diminishing, drill has increased in importance under modern conditions of recruiting. It has merely changed in

form, and instead of being repressive it has become educative. The force of modern short-service troops, as troops, is far sooner spent than that of the old-fashioned automatic regiments, while the reserve force of its component parts, remaining after the dissolution is far higher than of old. But this uncontrolled force is liable to panic as well as amenable to an impulse of self-sacrifice. In so far, then, it is necessary to adopt the catchword of the Bulow school and to 'organize disorder,' and the only known method of doing so is drill.

'Individualism' pure and simple had certainly a brief reign during and after the South African War, especially in Great Britain, and both France and Germany coquetted with 'Boer tactics,' until the Russo-Japanese war brought military Europe back to the old principles.

WEST END CLUB MEETS

To Nominate Officers, Discuss Banquet and Complete Inaugural Plans
Business of an important nature will be considered at a meeting to-night of the West End Republican Club, 1410 North Third street.

DOES YOUR HAIR SHOW YOUR AGE?

Of course white hair and gray always suggests age, but often faded, dull and brittle locks make us think, even young people are old, while a lustrous, heavy head of hair is naturally associated with youthfulness and forces us to credit its owner with being young. Perfectly healthy hair is always beautifying and is very easily acquired if proper care is given to the hair and scalp. In washing the hair it is not advisable to use a makeshift, but always use a preparation made for shampooing only. You can enjoy the best that is known for about three cents a shampoo by getting a package of canthrox from your druggist; dissolve a teaspoonful in a cup of hot water and your shampoo is ready. After its use the hair dries rapidly with uniform color. Dandruff, excess oil and dirt are dissolved and entirely disappear. Your hair will be so fluffy that it will look much heavier than it is. Its luster and softness will also delight you, while the stimulated scalp gains the health which insures hair growth.

Prana Syphon Bottles
Make Soda Water and Other Carbonated Beverages at Home. GORGAS
16 N. Third St. and Penna. Station

CALL 1991-ANY PHONE. FOUNDED 1871 Bowman's HARRISBURG'S POPULAR DEPARTMENT STORE

Smart and Exclusive Styles Henderson Front-Laced Corsets



Owing to the increased popularity of front laced corsets we have recently greatly enlarged our assortment of these models and we invite your inspection of our Henderson Front-Laced Corsets. They are reasonable, distinctive and original, and scientifically designed to produce nature's graceful contours.

All of the season's best features are included in the construction of these corsets, such as the ventilated back section, ventilated shield and elastic sections.

We are offering these splendid front laced models at popular prices, \$1.50 to \$3.00, and they will meet the approval of those women who are particular about their appearance.

In Back-Lace Corsets

Our stock is unusually complete, and among the many models we have in stock is a Henderson Corset, Number 368, made of white coutil, which has a medium low bust, with a soft apron extension below the clasp, and the graduated clasp is particularly effective for a corset of this description that is designed for average to full figures. Priced at \$1.00

We call your special attention to Henderson Corset, Style 504, which is unquestionably one of the newest and most stylish designs that has been offered this season. It is made of coutil, has a medium low bust, without boning over hips and is so designed to give the new natural figure lines so much in vogue. Price is \$1.50

Model 696, is a practical and satisfactory low bust corset, for average full to stout figures; the graduated clasp is particularly effective for this style of figure and the elastic facings, each side of the clasp, permit the perfect adjustment of the skirt to the body in any position. The price is \$2.00



To-morrow, Over Half a Thousand Pairs of

\$2 Women's Tan Gloves Go On Sale at 55c, 75c & 95c

They are Perrin's high grade \$2.00 gloves. All fresh and new, and every pair is stamped 'Perrin's.' Tan only.

However, on board ship coming over, salt water entered the cargo and as a result most of them are spotted—some slightly. But the workmanship is perfect. All are the two-dollar grade, and priced according to fewer spots.

Made of genuine French kid, 2-clasp style, three rows Paris point embroidery on backs, and overseas stitching. All sizes.

Note—These special price gloves will not be fitted on day of sale. Fitting may be secured later. Six pairs to a customer.

Main Floor—BOWMAN'S.



A Timely Sale of Hundreds of Coats At \$8.98, \$10, \$12.50, \$15, \$17.50 and \$20

Plush coats, zibeline coats, Hindu Lynx, matalamb, boucle, kersey, broadcloth, Arabian lamb, English mixture, fur fabric, corduroy and just every wanted kind of coats—in every new model and all the desirable shades. Sizes from Misses' 14 to Women's 46.

But for the unusual sale prices, you would expect to pay \$15.00 to \$30.00 each.

Extra Size Suits in Poplin at \$12.50

Regularly \$20.00. Well tailored. The complete size line from 39 to 53 is here today. Black and navy only.

Just thirty of these suits—and there will not be any more. One of the best specials we have been able to offer you in a long time.

Second Floor—BOWMAN'S

Conductors up: Keller, Forney, Pennell, Kugle, Logan, Eaton. Firemen up: Smith, Kroah, Shindle, Brakemen up: Fair, Klester, Goudy, Kone, Fentemacher, Albright, Werts, Waltman, McPherson, Decker, Deets, Weist, Myers, Taylor, Shuler, Campbell, Myma.

FUNERAL OF SOLOMON BRINDLE
Ethel, Paul and Edgar, all at home; also three brothers, George, of Mount Holy Springs; Levi, of Hayes Grove, and Williams, of Hundsdate, and three sisters, Miss Sarah, Mrs. Margaret Mellinger and Miss Lucinda, all of Hayes Grove. Mr. Brindle was a member of the Lutheran Church at Centreville.

THE READING
Harrisburg Division—2 crew first to go after 11:15 a. m.: 19, 12, 11, 24, 23, 20, 14, 10, 15, 6.

FOR GOOD GRIDDLE CAKES USE B and G's

Self-raising Buckwheat Flour, Pancake Flour or Muff-O Corn Flour. NONE BETTER FOR SALE BY ALL GROCERS Blank & Gottshall MANUFACTURERS SUNBURY, PA.

Hallmark Bracelet Watch A Reliable Watch at a Moderate Price 14 K. Solid Gold... \$25.00 25 Year Filled... \$15.00 DIENER, The Jeweler 408 Market Street

Grocery Suggestions

- Granulated Sugar, lb., 5 1/2¢
Fancy Apricots, lb., 12 1/2¢, 18¢, 22¢
Fancy Prunes, 12 1/2¢, 15¢, 18¢
Fancy Peaches, lb., 12¢
Country Dried Cherries, lb., 25¢
Evaporated Corn, lb., 15¢ and 22¢
Puro Cornmeal, sweet, savory, sanitary sack, 12¢
Aunt Jemima's Pancake and Buckwheat Flour, pkg., 10¢
Pint Bottle pure Maple Syrup, 25¢
12-lb. Pride Flour, 35¢
12-lb. Pillsbury Flour, 47¢
Creamery Butter, lb., 38¢, 42¢
Silverchurn Oleomargarine, 5 lb., \$1.15; Eastlake, 5 lb., \$1.00
Storage Eggs, dozen, 35¢

- Fresh, dozen, 45¢
10 bars Big Master Soap, 35¢
Jones' Dairy Farm Sausage, Hams and Lard. You know the quality sausage. Try their hams, lb., 25¢
Five-cent cake Sweet Chocolate free with one 25¢ Croft & Allen's Cocoa.
Something new, "The Creole Dinner," can, 10¢
Cut Tabasco Okra, can, 10¢
Tabasco Okra and Tomatoes, can, 10¢
Fancy Florida Grape Fruit, each, 5¢
Brussel Sprouts, box, 20¢
Cauliflower, head, 15¢, 18¢, 20¢
Domestic Camembert Cheese, box, 25¢
Brick Cheese, lb., 25¢
Ingersolls Pimento Cheese in cakes, 15¢ and 20¢
3/4-lb. 60c Tea, lb. 25c Coffee, special this week, 35¢

S. S. POMEROY Market Square Grocer