

The New GMC 1500 lbs TRUCKS Chassis A New Light Truck at a New Price

By the Largest Builder of Trucks in the Country.
SPECIFICATIONS

- Capacity—1,500 lbs.
- Weight—2,360 lbs.
- Speed—20 miles per hour.
- Motor—Continental 4-cylinder, L type. 3 1/2-inch bore, 5-inch stroke.
- Carburetor—Automatic Float Feed.
- Governor—Automatic and Yale Locked.
- Control—Left hand drive, center control.
- Transmission Sliding Gear, Selective. Three forward, and reverse.
- Drive—Propeller shaft.
- Brakes—Two sets.
- Tires—Pneumatic, 5x35 inches.
- Wheel Base—122 inches.



SOLD AT THE

Hudson Agency By I. W. DILL

Hudson & Regal, Bessemer and G. M. Co. Trucks.

SEE AD., PAGE 52, SATURDAY EVENING POST

Natcher Will Become Manager of Chicago Branch



GEORGE J. NATCHER

With the closing of the factory branch of the Abbott Motor Car Company in this city, George J. Natcher, local manager, will leave for Pittsburgh to be associated with the sales force there until the new branch office is opened in Chicago, when he will assume charge of the city sales department.

Mr. Natcher has received this promotion in recognition of energetic services rendered here and in Pittsburgh. For three years Mr. Natcher was associated with the distributors of Michigan cars at Pittsburgh and when Edward F. Gerber purchased the Abbott Motor Car Company of Detroit Mr. Natcher was assigned to the Harrisburg office to succeed C. D. Stewart as local manager.

A large volume of business is credited to Mr. Natcher's efforts since taking charge in this city and his many friends will wish him success in his larger field.

Studebaker Service Station at East End Auto Co.

A service station has been established for Studebaker cars at the East End Auto Company and J. Robert Barr, the manager, says it is the intention of the company to get in personal touch with every Studebaker owner so to render service on the adjustment of mechanical parts of cars when necessary. This feature is being adopted by Studebaker agencies throughout the country in order to prevent unnecessary repair bills when some minor adjustment, by an experienced mechanic, will answer the purpose.

New Jeffery Six Will Be Here This Evening

The Chesterfield Jeffery Six will arrive at the Bentz-Landis Auto Company this evening. This new model has received popular favor wherever shown and has been anxiously awaited by the local representatives for some time. A sale of a Jeffery touring car was made to G. C. Spangler, of Cumberland county, and a Vim light delivery to J. Slovinoe, of Steelton.

October Building Is Hundred Thousand Less Than Same Month 1913

Building permits for the month of October, amount to \$100,000 less than for the same month last year. Figures show that twenty-three permits, amounting to \$53,475, were issued for the month of October, 1914, while for the same month last year thirty-seven permits were issued, amounting to \$153,615.

HUPMOBILE SHOWS MANY REFINEMENTS

Fine Body Lines and More Power and Longer Wheelbase on New Car

E. C. Ensminger, distributor for the Hupmobile in Central Pennsylvania received three of the new models yesterday. These are of the type referred to in the official announcement published elsewhere in this paper.

The wheelbase of the new Hupmobile is 119 inches long, the rear being two inches more leg room in the front compartment and seven inches in the tonneau. Upholstery is full-stuffed, and the wider seats have the same comfortable tilt that has characterized Hup cars for three years.

Wheels are larger, tires being 34x4 inches, with non-skid treads regular equipment for the rear wheels. Other regular equipment includes a Hup design of one-man top, which when raised attaches rigidly to a fixed upright of the windshield; new style top cover that conceals the bows when the top is laid back; rain-vision windshield, with lower half adjustable for ventilation of the front compartment; special design headlights, with one bulb which can be dimmed at will and special glass front, with the upper half corrugated to kill any reflector glare; special design tall light; electric horn, demountable rims, spare rim and carrier at the rear, license plate holders in front and rear, robe and foot rails in tonneau.

An increase in power is gained through larger valves, an increase in the bore and a different shape combustion chamber. The Hupp Company was one of the first American manufacturers to use the small bore, long stroke type of motor, and this is continued, the bore being 3 3/8 inches and the stroke 5 1/2 inches. The carburetor, of the horizontal type, is moved to the right side of the motor, and the gas carried through a passage between the cylinders, assuring complete vaporization. Storage battery equipped with automatic spark advance, replaces the magneto.

The motor is made non-stallable through being connected at all times by a silent chain with the Westinghouse generator and long rear end motor, the single unit system having replaced the dual unit used for years. The voltage of the electrical system is increased from 12 to 13 volts.

Body sides are higher and the doors are wider, having the handles inside and flush with the door upholstery. Easier riding is assured by the use of longer front springs and long rear springs of semi-elliptic type. The front axle is of the Elliott type, with a slight caster effect which makes steering easier and gives a straight course after turn has been made. The rear axle remains the half floating type, with a new design housing which makes the gears more readily accessible.

Steering is now from the left side, with an 1-inch steering wheel, while the gear change and hand brake levers remain in the center. The gasoline tank is increased in capacity to sixteen gallons, with the filler cap under the hood to avoid a break in the smooth lines that sweep back from the new shape radiator and the windshield. The cowl board carries, in the center, the lighting and ignition switches and the speedometer, which are illuminated at night by a small hooded electric light. The switches are controlled by Yale locks. Crowned fenders, without beading and with flat edge, add their part to the beauty of the new car's design.

The new Hupmobile has just completed its third successful season, and which has proved the most popular model the Hupp Company has yet produced, is to be continued. Its characteristics are well known and are the foundations on which the model K has been designed. This was the first American car in which the small-bore, long-stroke principle was applied and was among the first few, if not the very first, to adopt the stream-line design with these innovations come others that have since been widely adopted by manufacturers, such as placing the gasoline tank in the cowl of the dash, driving the magneto and camshaft with a single silent chain, horn concealed under hood, etc.

GIRL PUSHED THROUGH WINDOW

Miss Lillian Eshenauer, employed by W. J. Perrin, was severely cut last night when pushed through a window near Market Square by a crowd of small boys "tick-tack" celebrants.

Would Rather Starve Than Eat---That Is, For a Day

Didn't Want to Take Up Stonebreaking at His Age, He Told Guard

"I have not worked for thirty years, and will not take up breaking stones at my age." So spoke Walter Moran, charged with being a panhandler when he was ordered to break stone at the county almshouse yesterday.

"If you don't work, you don't eat," was the information given Moran by the guard.

"Well, I guess I will have to starve," answered Moran, as he threw down his hammer and started toward a bench. Moran missed one meal last night's supper. He returned to work this morning.

When Moran went to work this morning he said he would remain just long enough to find a way to get his freedom. "And when I am gone, you will never see me again," he sighed.

The Eight Is Coming



It's On the Way and Will Positively Be Here First of Next Week

Come and inspect it whether you are interested in buying a new motor car or not. Get in touch with us or book a demonstration.

CRISPEN MOTOR CAR CO.
413-417 South Cameron Street

Saxon Company Announces Lowest Priced Delivery Car

The Saxon Motor Company has entered the light delivery field with the lowest priced delivery car of standard design ever produced. Of 400 pounds carrying capacity (in addition to the driver's weight), the Saxon delivery car is priced at \$395.

This new delivery car has such features of standard design as a powerful 4-cylinder motor, sliding gear transmission, dry plate clutch, shaft drive and standard tread. The top of the body is fitted with storm curtains which may be lowered so as to protect the load in inclement weather. The loading platform is low, making it convenient for the driver to handle goods.

Further conveniences are provided by placing the ignition switch and carburetor adjustment on a leather covered instrument board in the dash, and by making the spark control automatic.

According to Lawrence Moore, director of sales much attention has been given by the Saxon engineers to securing simplicity of control and operation, so that inexperienced drivers may have no difficulty in operating this vehicle.

"The new Saxon delivery car is designed for the thousands who need motor delivery in their business, yet who have always thought of motor delivery cars as being expensive," says Mr. Moore. "After a long period of experimenting we have produced a delivery car which costs no more than a good horse and wagon and at the same time has every advantage over horse delivery, in point of distance covered, new business possible to handle, mile for mile economy, and dependability."

G-M-C Motor Trucks to Be Sold Here by Dill

The "G-M-C" truck will be represented in this city by I. W. Dill. The agency for this well known truck made by the General Motors Company, is announced by Mr. Dill elsewhere in this issue. The new light truck has a rated capacity of 1,500 pounds. As pioneers in motor car construction this company has for years been among the leaders in gasoline and electric truck construction. The specifications in brief are as follows:

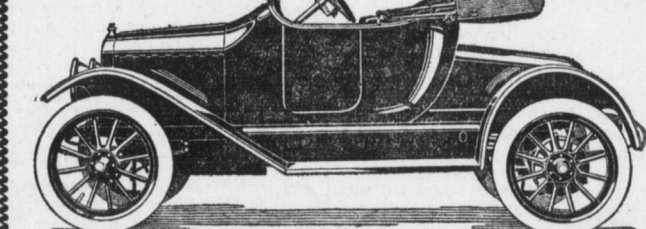
Capacity, 1,500 pounds in addition to body weight allowance of 750 pounds; weight, complete chassis, 2,360 pounds; speed, twenty miles per hour; motor, vertical, four-cylinder, water cooled-"I" type, 3 1/2-inch bore, five-inch stroke; carburetor, automatic float feed type; governor, automatic, fully enclosed and Yale locked; control, left hand drive, center control; transmission, sliding gear, selective type—three speeds forward and reverse—direct drive on high; drive, propeller shaft; brakes, two sets; tires, thirty-five-inch by five-inch all-around-pneumatic; wheel base, 122-inch; tread, front and rear fifty-six-inch. Price, chassis only in stock, including remounting oil side lights, one oil tail light, horn, complete set of tools, including jack and extra demountable rim, \$1,091 f. o. b. Pontiac, Mich.

PAIGE

This includes full equipment with Gray & Davis electric starting and lighting systems. All prices f. o. b. factory, Detroit. Paige cars are correct in design, proportion and mechanical construction, and made of the very best materials by the most skilled workmen. In its entirety the Paige cars bear the stamp of quality. Let us send you reasons why and complete specifications. Write or call for demonstration.

RIVERSIDE GARAGE
BELL PHONE 3741R
GEORGE R. BENTLEY, Proprietor

MAXWELL \$670 f. o. b. Factory



The new 1915 Maxwell Roadster with full equipment and seventeen new features. A fast, powerful and handsome, sweet-running car. All the high-priced features of high-priced roadsters. High tension magneto; sliding gear transmission; left hand drive; center control; anti-skid tires on rear. With Gray & Davis electric self-starter and electric lights, \$55 extra. Call or phone.

E. W. SHANK CENTRAL GARAGE
334 CHESTNUT ST.

The "Chesterfield" Light Six ARRIVES TO-DAY



Bentz-Landis Auto Co.
1808 LOGAN STREET
J. A. BENTZ, Manager. HARRISBURG, PA.

FORD CAR GARAGES
"PRUDENTIAL"
Guaranteed absolutely fireproof and Portable.
All glass, locks and hardware furnished.
Steel buildings for all purposes.

HOME OFFICE: BALTO., MD.
FACTORY: BALTO., MD.

MRG BY **\$89 UP**

THE C. D. PRUDEN CO.
S. Wm. Davis, Sales Agent.

Demonstration Building MARKET STREET
OFFICE: FRY COAL COMPANY Opposite P. & R. Station
CARE OF: NINTH AND MARKET

THERE!

THERE in unusual Power obtained by Buick Valve-in-Head Motors which foremost engineers agree are more powerful than any other type. THERE in Beauty of Line which satisfies—THERE in Economy of Upkeep which adds to the joy of ownership—THERE in Durability beyond any ordinary requirement—THERE in a Popularity which sold the entire 1914 output of 33,200 cars by March 15—THERE in Safety, Simplicity, Reliability and Comfort.

These are the accomplishments, proved on every kind of road in every country, by

BUICK

Valve-in-Head Motor Cars.
A Full Line of Fours and Sixes, including Three Touring Cars and Two Roadsters.

C24-3900; C25-5950; C36-8118; C37-8123; C55-21050. F. O. B. Flint, Mich.

The Buick story for 1915 promises greater accomplishments than ever. The preface is found in a demand, rapidly increasing, for 1915 Buick cars—a demand which endorses the Buick aim to provide the car which will suit the individual taste and requirements of the knowing car buyer.

The enthusiastic approval of over 180,000 Buick owners, is your sure proof of these accomplishments.

Improvement in foundry practice, proven methods of machine operations, and one more year of the world's knowledge of various materials.

The 1915 Chevrolet in touring and roadster models are also here. Prices \$750 to \$2500

HOTTENSTEIN & ZECH
City Auto Garage
Rear of Union Trust Building On Square

Service

To Studebaker Owners

We want every owner of a Studebaker car to know that all adjustments on Studebaker cars will be made absolutely FREE. We want your car to have the best of attention and we have ample facilities and expert mechanics at your service.

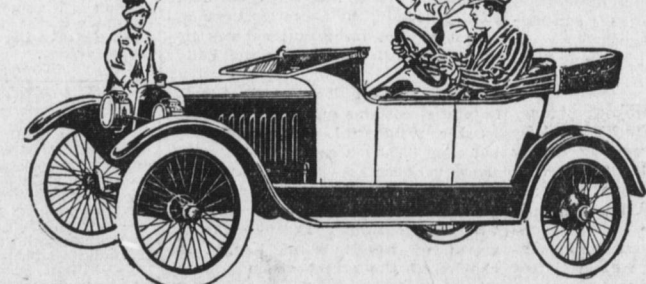
No charge will be made unless for actual repairs or overhauling authorized by you and these will be nominal. What we want is to establish a first-class service station for Studebaker cars. You're welcome to have your car inspected.

EAST END AUTO CO.

LINDEN AND SHRUB STREETS
Bell Phone J. Robert Barr, Mgr.

\$395.00 SAXON \$395.00

F. O. B. DETROIT SAXON \$395 F. O. B. DETROIT



Some Quality Features That Distinguish the Saxon

- Good Looks**—Body lines stylish, following most up-to-date French practice; everything in good taste. Distinctive, different, yet not freakish.
- Exceptional Roominess**—Plenty of width for two big people to sit comfortably; plenty of length for a tall man to stretch his legs.
- Comfort**—Good cushions to sit on; a comfortable back to lean against; springs of cantilever type, same as on high-priced foreign cars.
- Ease of Handling**—Nimble-footed turns short; takes up little room; quick to run in and out of traffic. Holds the road at all speeds. Won't skid.

KEYSTONE MOTOR CAR CO.
1019-1025 Market St. Harrisburg, Pa.