

# What the New Elevator Service Means to You

Have you ever considered for a moment how much time you save, and how much less the annoyance, when everything is arranged in a convenient manner? Situated on the west side of the building (absolutely safe in every respect) and connecting every floor, the new elevators play an important part in increasing the service to our patrons. Any department, from anywhere in the store, may be reached within a couple minutes by this new service.

CALL 1991-ANY PHONE.   
**FOUNDED 1871**  
**Bowman's**  
 HARRISBURG'S POPULAR DEPARTMENT STORE

The Autumn Harvest Sale offers everything new for the Fall and Winter. Every department in the Store offers its list of bargains and every department is splendidly prepared to serve you promptly and with careful attention. Many more items in the sale not advertised. Come and look around.  
 Large wide aisles, new fixtures, store rearrangement and new elevator service makes it a pleasure to shop here.

**Nothing More Appreciated As a Gift** than a bit of one's own handiwork. It carries with it a touch of your own personality. Visit Our Art Embroidery Section. Large lines of stamped goods, floss and crocheting cotton.  
 Second Floor—BOWMAN'S.

## Autumn Harvest Sale of Dress Goods Silk & Wool Dress Materials



A large and comprehensive collection of dress fabrics that comprises all the new weaves in contrasting materials—called for by this year's styles—rich colorings in the attractive Roman stripes in silk and wool—used in many charming styles. Visit our Dress Goods Department.

- 40-inch Crepe Poplins—a beautiful all-wool fabric in shades of Tete de Negre, Copenhagen, maroon, gray, wistaria, brown, Russian green, taupe, Gobelina and black. Special, yard ..... 75c
- 36-inch all-wool Storm Serge—navy, green, garnet, brown, black, rose and Copenhagen. Special, yard ..... 45c
- 40-inch Gabardines—Russian green, navy, Copenhagen and black. Special, yard ..... \$1.00
- 39-inch San Toy—garnet, taupe, Russian green, navy, Copenhagen, brown, black, myrtle, Tete de Negre, tan, Gobelina, wistaria and Royal. Yard ..... 75c
- 46-inch Mohair Poplin—brown, green, navy and black. Special, yard ..... \$1.25
- 53-inch black satin finish Broadcloth—sponged and shrunk. Yard, Special, ..... \$2.50
- 50-inch San Toy—Copenhagen, Russian green and navy. Special, yard ..... \$1.00
- 40-inch Silk and Wool San Toy—Green, navy, black, Copenhagen, brown, Royal, wistaria, taupe and black. Yard ..... \$1.00
- 56-inch Roman Stripe Suitings—all the wanted color combinations. Special, yard ..... 39c and 50c
- 56-inch Roman Stripe Suiting. Yard ..... \$2.50
- 46-inch Heavy Crepe Suitings—navy, brown and black. Special, yard, ..... \$1.00



### Black Silks

- Yard-wide Black Taffeta, chiffon finish. Yard, ..... 79c, 89c and \$1.00
  - Yard-wide Black Satin Messaline. Yard, ..... \$1.00, \$1.19 and \$1.25
  - Yard-wide Black Dress Peau de Soie. Yard, ..... 89c, \$1.00, \$1.19, \$1.25 and \$1.50
  - Yard-wide Black Satin Duchesse. Yard, ..... \$1.00, \$1.50 and \$2.25
  - 40-inch Black Silk Crepe de Chine. Yard, ..... \$1.50, \$1.69 and \$1.59
  - 40-inch Black Satin Charmeuse. Yard ..... \$1.69
  - 40-inch Black Satin Imperial. Yard ..... \$1.69 and \$2.00
  - 40-inch Black Satin de Luxe. Yard ..... \$1.69 and \$2.00
  - 40-inch Black Satin Elegant. Yard ..... \$2.00
  - 56-inch Black Satin. Yard ..... \$1.50
- On Sale on the Main Floor—BOWMAN'S.

### Handkerchiefs

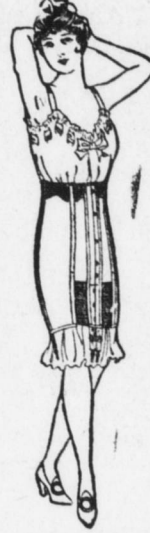
Women admire these dainty handkerchiefs of linen, some exquisitely embroidered in dainty colors. Pretty gift handkerchiefs that anyone will appreciate.  
 Main Floor.

### Belts and Girdles

Ladies' fancy girdles in the new basque and butterfly bow styles at ..... 50c to \$2.00  
 Ladies' handbags and party boxes with leather and moire linings at ..... 50c to \$5.95  
 Ladies' and children's patent leather belts; also swede vestes ..... 25c and 50c  
 Ladies' and gentlemen's coin purses and bill books at ..... 10c to \$1.95  
 Ladies' black elastic belts, ..... 50c  
 On Sale on the Main Floor. BOWMAN'S.

## Corsets That Give Perfect Fitting Lines

Special showing of New Fall Models just received. New fashions demand new figure lines—and this demand is fully met in the showing of all popular makes—giving individuality desired by women of correct taste. New models that afford proper foundation for the new gowns are here that meet fashion's dictates in every particular. Visit our new Corset Department on the Second Floor—you not only have the privacy of an exclusive shop but a full line of all the leading makes to select from.



- Henderson Rustless Corset made of coutil; low, medium and high bust; two hooks at bottom; draw string at top. Special ..... \$1.00
  - Henderson Corsets—made of coutil; low, medium and high bust, heavy hose supporters. Special ..... \$1.00
  - Henderson Corsets, made of coutil; double strength, graduated clasp; embroidery trimmed at top with draw string. Special ..... \$1.50
  - Henderson Corsets, medium and low bust; long skirt, three pair hose supporters, hooks at bottom, ribbon lacers below hooks. Special ..... \$2.00
  - Henderson Corsets, made of brocade and coutil; medium and low bust; extra long skirt; three pair hose supporters; wide embroidery trimming, ribbon run at top. Special, \$3.00
- On Sale on the Second Floor—BOWMAN'S.

### RIBBONS AND NECKWEAR

Ribbons for bows and girdles. You'll be pleased with the dainty neckwear to be had for ..... 25c and up to \$1.00  
 Taffeta Ribbons, 4 inches wide, in all the new shades. Yard ..... 15c  
 25c and 29c fancy Persian Ribbons. Yard ..... 19c

Laundered collar and cuff sets ..... 50c and \$1.00  
 Pique cuff and collar sets ..... 25c and 50c  
 Tango flare collars in lace and organdie ..... 25c and 50c  
 Organdie and lace vestees ..... 25c to \$1.00  
 On Sale on the Main Floor—BOWMAN'S.

## Extraordinary Values in Linen and Bedding

Visit our Linen Store on your next trip to Harrisburg. One of the largest collections to be found anywhere.

- For Winter's cold we offer a splendid line of warm Bed Coverings.
- Homespun Blankets—large bed size, brown with darker border, good heavy weight. Pair ..... \$1.50
- Old Glory Longcloth—36 inches wide. Put up in sanitary bags. No lost yardage. 10-yard lengths. Piece ..... \$1.50
- White Crochet Bed Spread—full size, good, heavy quality. Our leader at ..... \$1.00
- Table Linen—72 inches wide; stripe, spot, and daisy designs; very heavy quality. Yard, \$1.00. Napkins to match, at, dozen .. \$3.50
- White Marseilles Bed Spread—satin finish, double bed size. Regular \$2.50 quality. Special ..... \$1.98
- Cotton Warp Blankets—made with spool cotton, warps with cotton and wool mixed in the filling. Gray with blue border. Marked "Bowman's Special." Regular \$4.75 value. Special ..... \$3.98
- Quilted Pads—covered with fine bleached muslin, filled with white cotton, nicely quilted and bound. Prices from ... \$1.75 to \$2.50
- Bathrobe Blanket Material—2 yards wide. Just need one length for a robe. Colors are blue and tan green and red, pink and blue, gray and black, and white and red. Yard, 75c
- Merino Sanitary Comfort Batting—sanitary wool sheet, size 72x84 inches—enough to make one comfort. Special ..... \$2.00
- 72-inch extra heavy Linen Sheet, at, yard ..... 98c
- 90-inch Linen Sheet—our Leader, at, yard ..... \$1.00



Main Floor—BOWMAN'S.

## Infants' and Children's Wear

Everything for baby's comfort from the daintiest garments and softest shoes to the newest kind of bed.



Garments for the older children up to 14 years of age.  
 Infants' long coats in cashmere, poplin and serge, collar and cuff embroidered, with and without capes. Prices range from  
**\$2.25 to \$9.98**  
 Infants' Capes in poplin, cashmere and serge, embroidered edges, silk-lined hoods. Prices range from  
**\$2.25 to \$7.98**  
 Children's Plush Bonnets in white, red, black, blue and green; fur and ribbon trimmed. Prices range from  
**50c to \$5.50**  
 On Sale on the Second Floor, BOWMAN'S.

## Women's and Children's Hosiery Large Line of Best Makes at Prices That Will Warrant Your Laying in a Good Supply

- Women's plain black cotton hose, double soles. Pair, 10c, 12½c, 19c and 25c
  - Women's black cotton hose, white feet. Pair, 12½c and 25c
  - Complete line of Onyx Hosiery for Women—
  - Plain black cotton, pair ..... 25c
  - Plain and silk lisle, pair ..... 25c, 39c and 50c
  - Thread silk boots, lisle tops, pair ..... 50c
  - Thread silk, wide garter tops, pair ..... \$1.00 and \$1.50
  - All have double soles, and high spliced heels.
  - Women's heavy cotton and fleece lined hose, pair ... 25c
  - Plain black cashmere hose, pair ..... 25c, 39c and 50c
  - Musser cotton hose for boys and girls, pair, 30c, 35c and 40c
  - Children's black cotton hose, fine ribbed, pair, 10c, 12½c, 19c and 25c
  - Children's silk lisle hose, black and colors, double heels and toes, fine ribbed. Pair ..... 25c
  - Boys' black cotton hose, fine ribbed, double knees, heels and toes. Pair ..... 12½c, 19c and 25c
  - Children's black cashmere hose, fine ribbed, all sizes. Pair ..... 25c
  - Complete line of infants' hose in cotton, silk lisle and cashmere. Pair ..... 10c, 12½c, 15c and 25c
- On Sale on the Main Floor—BOWMAN'S.

## Worthy and Favorably Known Bed Muslins

- 80c SEAMLESS SHEETS AT 65c  
 Made of Mohawk brand muslin, a great favorite with the wide-awake housekeepers. Size 81x90 inches.
- 95c SEAMLESS SHEETS AT 75c  
 Of Mohawk muslin, made by the Utica Mills; mill seconds, discolored by a few oil spots which a good rubbing will remove readily enough. Size 90x90 inches.
- 52c SEAMED SHEETS AT 36c  
 Famous Cambridge make muslin. Size 72x90 inches.
- 24c PILLOW CASES AT 18c  
 The Diamond brand, made from Pequot Mills muslin. Wonderfully enduring quality. Size 40x36 inches.
- 40c AND 45c BOLSTER CASES, 35c  
 Lockwood muslin, stout, well-made and completely bleached. Sizes 42x72 and 48x72 inches.
- 18c PILLOW CASES, 12½c  
 Both hemstitched and plain hem styles, a wonderfully fine slip for the money. Two sizes, 42x36 and 48x36.
- 35c BLEACHED SHEETING, YD., 29c  
 The well-known Dallas make that housekeepers so generally favor; 81 inches wide.
- 12½c UNBLEACHED SHEETING, YD., 6½c  
 40 inches wide, excellent quality, useful for many household purposes.
- 12½c LONGCLOTH, YD., 7½c  
 Great favorite for underwear and children's clothes. Also 36-inch bleached muslin at this price.
- 30c AND 35c FEATHERPROOF TICKING, 19c  
 Large and small remnants of the very best ticking made. Narrow and wide stripes.
- 80c SEAMLESS SHEETS, 59c  
 Mohawk double bed sheets, bleached, 3-inch hems, marked E. S., soiled by mill stains—otherwise perfect.
- "BOWMAN'S SPECIAL" PILLOW CASE, 12½c  
 We have a pillow case branded "Bowman's Special" that if the regular brand was on what would be 15c.
- 10c AND 12½c MUSLIN, YD., 8c  
 Cut from full pieces, such as Hill, Fearless, and other best brands.
- 9c FLANNELETTE, YD., 6½c  
 Cut from new patterns and full pieces, light and dark colors.
- 12½c CRETONNES, YD., 8½c  
 Fine for comforts; beautiful patterns to select from. 36 inches wide.
- 12½c OUTING FLANNEL, YD., 10c  
 Heavy weight. Fine quality for night gowns and pajamas.
- UNBLEACHED SHEETING, YD., 15c  
 81 and 90 inches wide. Laundered nicely and bleached easily—fine for sheets and pillow cases. 1 to 3½ yard lengths.
- 18c PILLOW CASES, 9c  
 Unbleached, one of the finest qualities made—(remnants.)
- 27 TO 36-INCH MUSLIN, YD., 3½c  
 Bleached or unbleached, remnant lengths. 20 yards to a customer. Order by mail.  
 On Sale on the Main Floor, rear of new Elevator—BOWMAN'S.

## Dress Trimmings

Latest novelties that give the finishing touch to the coat, suit or gown.

- FUR TRIMMINGS  
 Coney, Bear, Russian Mink, Ermine and Monkey Fur, ¼-inch to 2 inches wide. Yard ..... 25c to \$1.75
  - MARABOU TRIMMINGS  
 Black, natural, white, pink and light blue. Yard, ..... 25c and 50c
  - OSTRICH BANDING  
 Black and white, and natural and white. Yard ..... 59c
  - Coat Frogs and Pendants, each ..... 10c to \$1.50
  - Plain black Braids for the tailored suits and dresses, ½-inch to 4 inches wide. Yard ..... 10c to \$1.00
- On Sale on the Main Floor—BOWMAN'S.

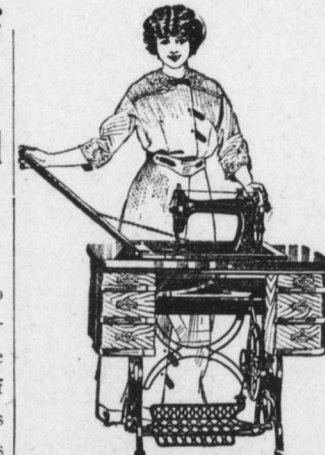
## NOTIONS

A good list of items in the Notion Department to get you acquainted with our new quarters in center aisle, rear main floor.

- J. & P. Coats' six-cord machine thread, dozen ..... 55c
  - 5c snap fasteners, black and white, all sizes, dozen ..... 3c
  - 10c inside belting, yard ..... 5c
  - 5c brass hooks and eyes, 2 cards ..... 5c
  - 5c sewing needles, 2 packs ..... 5c
  - 19c, 12½c and 15c washable dress shields, 3 pairs ..... 25c
  - 10c, 15c and 25c rubber buttons, dozen ..... 1c
  - 10c silk middy lacers ..... 5c
  - 5c best high grade steel scissors ..... 25c
  - 75c best high grade steel scissors ..... 39c
  - 500-yard spools basting cotton, 3 spools ..... 10c
  - 100-yard spool black sewing silk ..... 5c
  - Net Guimpes, black and white, all sizes ..... 25c
  - Black and white girdelin, 1½ to 5 inches wide, yard ..... 12½c and 15c
  - Basque foundations ..... 50c
  - Girdle foundations ..... 10c, 20c and 25c
  - Dressmaker's wire, card ..... 5c and 10c
  - Leaded Tape, yard ..... 10c
  - Hooks and Eyes, black and white, yard ..... 15c and 25c
  - "Out-o-style" press stud tape, yard ..... 25c
- On Sale on the Main Floor—BOWMAN'S.

## Eldredge Two Spool Rotary Sewing Machine

The Triumph of The 20th Century  
 No Bobbins to Wind  
 How This Machine Operates



A Revelation in SEWING MACHINES

You sew direct from two spools of thread. The lower spool fits in the spool case which answers the purpose of a shuttle, while the other is placed on the spool pin; as usual.  
 You will not be annoyed by the lower thread running out unexpectedly in the middle of the seam. The amount of thread on the lower spool is indicated by that on the upper spool

This wonderful machine marks without question, the greatest advance in sewing perfection made in scores of years.  
 Every housewife and every dressmaker should see this machine in operation—let us demonstrate it to you.

- Price ..... \$47.50  
 Pay as you sew.
  - Special Prices on Other Good Makes
  - \$60 Eldredge Rotary, \$37.00
  - \$50 Bowman Vindex, \$25.00
  - \$35 Bowman A, No. 1, \$19.50
  - \$25 Paveway ..... \$12.98
- On Sale on the Fifth Floor, BOWMAN'S.

We give FREE a full set of attachments with every machine.

Shopping in any Department is made pleasant by new store arrangement—any floor may be reached in a few seconds by our New Electric Elevator Service.