

# 1915 Hupmobiles

New Models  
 Will Reach Here Sept. 16  
 Exhibit at  
**Ensminger Motor Co.**  
 Wholesale Distributor  
 Third and Cumberland Sts.

# MAXWELL

NEW 1915 MODEL  
**At Its Price, \$695, the World's Greatest Automobile Value**  
 Here's the car that has all the features of a \$1,000 car, and  
**The New 1915 Model Has 17 New Features**  
 Sims real high-tension magneto; sliding gear transmission; left-hand drive; center control, anti-skid tires on rear, and all high-priced car features. The easiest car in the world to drive.  
 A great big, handsome, powerful, swift-running REAL automobile. The greatest hill climber in the world.  
 The car that has set the whole country talking.  
**WITH ELECTRIC STARTER AND ELECTRIC LIGHTS \$55 EXTRA.**  
 Holds the Road at 50 Miles an Hour  
 Write Phone or Call For Demonstration  
**E. W. SHANK**  
 AT CITY AUTO GARAGE  
 STRAWBERRY AND RIVER STREETS, NEAR SQUARE

# JEFFERY CARS

**Stand for Economy, High Grade Quality, Distinction in Style, Plus Comfort at a Moderate Price**  
 PLEASURE CARS | JEFFERY TRUCKS  
 Jeffery Four . . . \$1,450 | 1,500 lbs. Chassis, \$1,300  
 Chesterfield Six, \$1,650 | 1 1/2-ton Chassis . \$1,650  
 Jeffery Big Six . \$2,400 | Jeffery Quad. Chassis, 4-wheel Drive, \$2,750  
 All Prices F. O. B. Factory. Different Body Styles.  
 EXHIBITION AT GRANGERS' PICNIC NEXT WEEK  
**JEFFERY AUTO CO.**  
 1808 LOGAN STREET  
 HARRISBURG, PA.  
 J. A. BENTZ, Manager.

# Quality First

5-Passenger Touring . . . . .	\$1650.00
6-Passenger Touring . . . . .	\$1725.00
2-Passenger Coupelet . . . . .	\$1900.00
5-Passenger Sedan . . . . .	\$2750.00
7-Passenger Limousine . . . . .	\$3200.00

Above Prices are f. o. b. Detroit

**Keystone Motor Car Co.**  
 1019-25 Market Street

CALL 1991-ANY PHONE.  
 FOUNDED 1871  
**Bowman's**  
 HARRISBURG'S POPULAR DEPARTMENT STORE

Visit Our Auto Tire Department  
 ON THIRD FLOOR  
 Five Guaranteed Reputable Makes at low prices.  
 GOODYEAR KELLY-SPRINGFIELD NASSAU  
 IMPERIAL CAPITOL  
 Tires and Tubes  
 Every Tire Guaranteed. Get Our Prices.  
 Third Floor—BOWMAN'S.

## Mrs. Carman Collapses; Is Under Doctor's Care

Special to The Telegraph  
 Mineola, N. Y., Sept. 12.—Mrs. Florence C. Carman, indicted Thursday by the grand jury on a charge of murder in the first degree for the killing of Mrs. Louise Bailey, to-day was under the care of the Nassau county jail physician. Mrs. Carman collapsed soon after being locked up.  
 Since the first indictment Mrs. Carman had been enjoying full liberty on bail. Her activities at Freeport have been much the same as before the murder. Apparently her health has been good.  
 District Attorney Smith said he would ask for a special term of the Supreme Court in October for the Carman trial. If this is not granted the case probably will go over until next year.

## Come See the Chandler and its Marvelous Motor



**CHANDLER**  
 LIGHT-WEIGHT SIX  
**\$1595**

The Chandler weighs only 2885 pounds. It runs 16 miles or more per gallon of gasoline. 7000 miles per gallon of oil. 7000 miles per set of tires

WE promise not to make you buy. And we don't believe we will have to. Your own judgment will show you in how many ways the Chandler excels. Take the motor, for instance. Our owners all agree that it is this wonderful engine that makes the Chandler so superior to other cars that seem to be in its class.

Chandler couldn't make this powerful and exclusive long-stroke motor any better if the car sold for twice its price. It is the Chandler motor, the fruit of eight years of six-cylinder experience and not a stock motor found on a dozen makes.

And look at its strictly high-class features: Self-contained oiling system with constant lubrication for every working part. (No outside piping.)

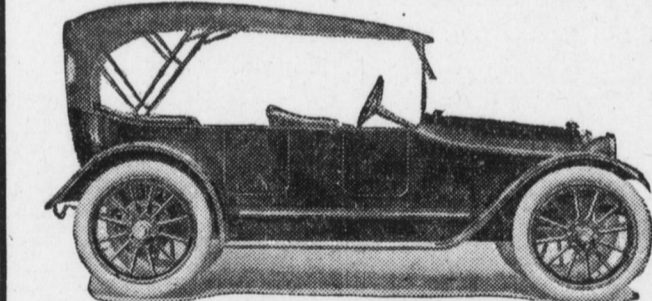
Separate unit electric starting and lighting system, with Bosch Magneto for ignition. (You don't see the high-priced sixes leaving off the Bosch, but other light sixes are leaving it off. It's expensive, but it gives perfect ignition, so Chandler uses it.) Genuine imported Coventry silent chains for driving cam shaft, pump and generator. (This is modern construction, supplanting noisy gears.)

Extra heavy crank shaft perfectly balanced.  
 Cast aluminum motor base extending from frame to frame and taking road strain off the motor.

These are only a few Chandler features. The car reflects high-priced design throughout. Still the profit-sharing price for 1915 is \$1595. There is no other value that approaches it. A bold statement but we are here every day ready to prove it.

NEW 1915 MODELS  
 Ready for Delivery

**Andrew Redmond**  
 Third and Boyd Streets  
 CHANDLER MOTOR CAR CO., Cleveland, Ohio



**THE VULCAN \$850**  
 THE WORLD'S GREATEST LIGHT CAR  
 A QUALITY CAR AT A QUANTITY PRICE

A five-passenger touring car of extremely graceful lines and classy appearance. A powerful hill climber. Made under the direction of men of extraordinary mechanical genius. The engineers behind the Vulcan are men of automobile experience dating back to the beginning of the industry, as well as possessing natural mechanical ability of the highest type. Not the greatest car in size, nor the greatest in production, but the greatest in performance and efficiency—highest in trouble-lightest on tires and gasoline, positively the light car that gives users the greatest value for the money. A number of them are in use by your neighbors. Let us prove the car's efficiency. Write for literature to your own satisfaction. Price includes full equipment f. o. b. factory. Roadster type \$750.

**Penbrook Garage**  
 PENBROOK, PA. BELL PHONE 1154-L

**MILLER NON-SKID TIRES**  
 Grip the Road Like a Cog-Wheel  
 STERLING AUTO TIRE CO. 1451 Zarker St.  
**VULCANIZING**

## THE STORY TOLD BY THE AUTOMOBILE

Translated From "Automobilish" to English For Those Who Study Motor Genealogy

Note:—The following is taken from a conversation which the writer overheard between two well-known automobiles in a large garage in one of the southern States. The reader must excuse the continued use of the ego—it is not egotism on the part of the automobile. "She" is simply stating facts about "herself"—"modesty" is "her" middle name and "she" almost blushes when "she" says "I."  
 "Yes, I was born in Detroit. My parents were both American models. Mother being a town car and Father a racer; and say, how he could cover the ground in his younger days. But he got old and when he finally got down to one lung, he had to take a back seat. Lots of young racers though, try to follow Pa's example today, but few of them have the speed he had. Mother is holding her own pretty well. Of course, she is getting a little gray but she is just as strong as ever and goes into town and back twice a day without even a sigh. She never was driven very hard though and most always had women with her. Pa bummed' around with everybody and that's why he had to go to the hospital so much. He had the drink habit something awful. Why, he could drink more gasoline and 'carry it' than any car I ever saw."  
 "How many brothers and sisters have I? Why, say, our family has an addition about every five minutes and I have so many brothers and sisters that I've lost all count. You see our family is very popular. We don't stay together very long. We no more than see the light of day and some-body comes, falls in love with us and takes us away; and that brings me to my own story.  
 "You see I am a baby—a real 1915 baby, but just the same I have had a very wide experience for one so young. Believe me, I have been put to a hundred tests and can stand anything now. They wouldn't let us leave home if we weren't strong and healthy and able to do all kinds of work.  
 "One day not long after I came into existence, two men came up to me in our factory and stopped. They were arguing about me and I heard one man say to the other, 'I'll bet you a good hat that she can take you 1,500 miles and you won't have to touch her.'  
 "Of course, it pleased me to hear myself praised and I was not in the least scared when the other man replied, 'I'll take your bet and besides I won't carry a single tool—she's got to go all the way without an adjustment.'  
 "Well, to make a long story short, I made the trip—1,500 miles in all and over some of the worst roads I ever hope to see. I averaged about 35 miles to a gallon of gasoline on the good roads and, as I 'start myself' my new owner never had to crank me once."  
 "People who have ridden in me say I'm the nicest riding car they ever saw and they speak of my beautiful stream line body and believe me, I am proud of myself and of my family.  
 "Who am I? Why, didn't I tell you my name? I beg your pardon—my name is Maxwell, I am one of the new 1915 touring cars, and now what will you have to drink,—gasoline or just plain water?"

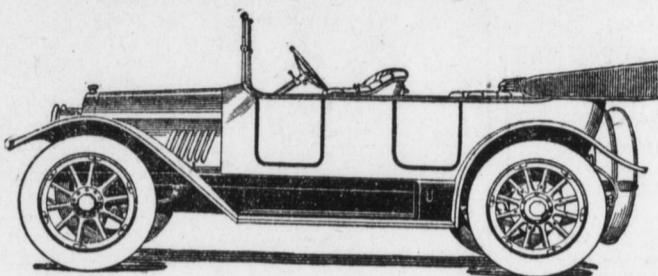
ELIZABETHVILLE RESIDENT DIES IN READING HOSPITAL  
 Special to The Telegraph  
 Elizabethtown, Pa., Sept. 12.—Yesterday morning news was received here that Mrs. Fitting, wife of the Rev. H. W. Fitting of Oley, Pa., had died in the Reading Hospital. Mrs. Fitting was the only daughter of Mr. and Mrs. Isaac Swab and the brief-stricken parents were not aware that their daughter was sick. Mrs. Fitting was a woman of sterling character and with her husband labored zealously in the Lutheran Church at Oley, where the Rev. Mr. Fitting was pastor. She was 43 years old and is survived by her husband, a son and daughter, father and mother and four brothers, Arthur, of Scranton, and Harry, Warren and Percy, of this place.

APPOINTED PRIVATE SECRETARY  
 Special to The Telegraph  
 Waynesboro, Pa., Sept. 12.—Miss Rebecca Varner, of this place, has secured a position as private secretary to S. E. Smith, president of the Methodist Bible School and Missionary Training Home at Scranton, and will leave for that place Monday.

This is one of the most important announcements ever made by an automobile manufacturer—certainly the most important ever made by this company. It will cause a profound sensation throughout the automobile industry. Its effects are bound to be broad and far-reaching. It will pay you to read carefully every word in this statement

## Abbott-Detroit

Announcement of Change in Policy



# Prices Cut On Four-Cylinder Cars

On August 17th the directors of this company decided to engage in the manufacture of six-cylinder cars exclusively.

This decision came after all preparations had been made to produce a quantity of 1915 four-cylinder cars, and obligations had been incurred to receive and pay for material for nearly 1,000 machines.

It is therefore necessary to manufacture and sell all of these thousand cars before we can go ahead with exclusive six-cylinder production. Consequently, in order to facilitate matters, we will close out all of our four-cylinder cars at an enormous sacrifice.

We are determined that our proposition shall be so attractive to motor car buyers that it will move the cars as fast as we can turn them out. Every four-cylinder machine will be sold on a price basis which makes all other offers look absurd.

### Just Think

We are placing before you a proposition worth literally hundreds of dollars per car—to you personally.

You can now buy new Abbott 1915 models at prices which represent an enormous sacrifice in profit. You can now buy high-

grade cars, built to sell up to \$2,000, at the price of the cheap, roughly-made machines.

### A Mechanical Masterpiece

Abbott quality is a well-known fact. Over 7,000 Abbott cars in actual use, all running with practically no expense and with perfect satisfaction to their owners, proclaim the inherent goodness of the Abbott chassis.

Every Abbott-Detroit is strong and powerful. Every machine is built of the finest materials possible to secure. The chassis is perfection itself.

Body designs are the latest streamline type. Luxurious upholstery is generously provided. The painting is superb. Every detail is carefully worked out to insure absolute satisfaction.

Every machine is fully guaranteed. No matter what price you pay, we positively insure you a perfect car. You are absolutely protected, to the fullest limit.

### Get Out Reduced Prices

You are looking for motor car values—and here is the chance to get what you want. If you will buy a car now, we will absolutely guarantee to save you hundreds of dollars. We mean it—hundreds of dollars!

Come and investigate for yourself. You will be absolutely convinced of the unusual merit of our proposition. You will agree that there is no reason for you to wait another day on account of cost.

Demonstrations cheerfully furnished on request.

G. J. NATCHER, Mgr.

## Abbott-Detroit Branch

Phone 3593

106-08 S. 2nd St.

HARRISBURG, PA.

## IMPORTANCE OF THE UNIVERSAL JOINTS

Scientific Transmission of Power to Rear Axle Regardless of Angle or Bend

"Few automobile owners appreciate the importance of the universal joints," declares George F. McFarland, of the Harrisburg Automobile Co., distributors in this territory for the Haynes, America's first car. "In order to get sufficient road clearance, the crank shaft of the motor must be mounted on a line some distance above the rear axle so that the power from the motor must be transmitted through an angle or bend in the propeller shaft which connects the motor with the rear axle.

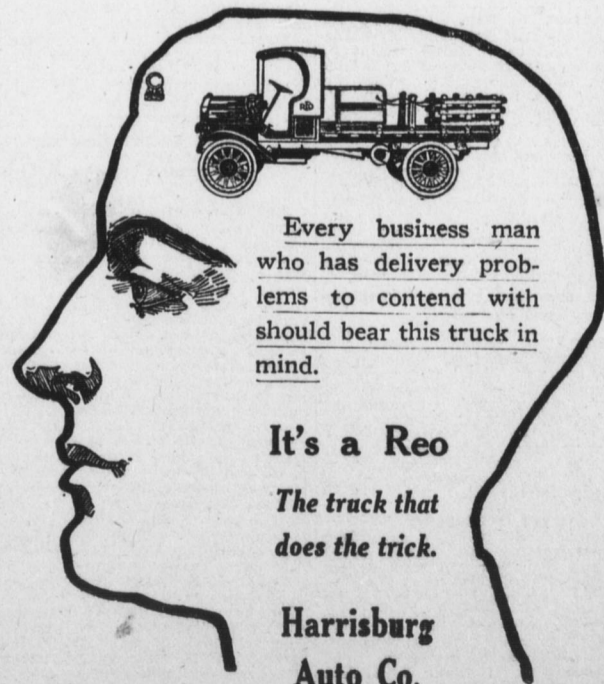
"Quite a few devices have been developed for this purpose, but the use of the universal joint has proved to be the most satisfactory. However some manufacturers make the mistake of using but one universal joint in the driving shaft. It has been proved when one joint only is used and the angle which the two shafts make with one another is large, as is the case during excessive spring action in running over rough roads, that the power is transmitted unevenly.

"That is, there is an actual difference in velocity of the shaft at several points during one revolution of the shaft, and the twisting action produced in the shaft on this account must be absorbed either in the shaft itself or in the driving gears. The result is that the gears soon wear, the bearings loosen up, and a large amount of lost motion and noise develops on account of this strain put upon them.

"It has been determined by using two universal joints in the propeller shaft, between the motor and the axle, that this difference in speeds of the shaft at different points of each revolution is entirely compensated, and the power is transmitted evenly from the motor to the rear axle regardless of the angle or bend in the shaft.



**CRISPEN MOTOR CAR CO.**  
 413-417 South Cameron Street



Every business man who has delivery problems to contend with should bear this truck in mind.

It's a Reo

The truck that does the trick.

Harrisburg Auto Co.