

MODEL 26, LIGHT SIX. 5-PASSENGER, Price, \$1,800.

### See This Wonderful New 1915 Light Six

Ask us to give you the Chalmers Standard Road Test, which proves every claim we make.

- 1915 Light Six Touring, . . . . . \$1800
- 1915 Light Six Coupelet, . . . . . \$2050
- Larger Master Six 5 Passenger, . . . . . \$2175
- Larger Master Six 6 Passenger, . . . . . \$2275

Fully Equipped F. O. B. Detroit

## KEYSTONE MOTOR CAR CO.

1019-1025 Market Street Robert L. Morton, Manager

### CHANDLER DOUBLES SALES OVER NIGHT

Scores of Dealers Visit Cleveland Plant to Secure Sales Rights

Visitors to the Cleveland plant of the Chandler Motor Car company during the past ten days have witnessed the unusual sight of "top speed" production during the so-called dull season.

"The announcement of a reduction in price in the 1915 Chandler Six made in a big chain of daily newspapers two weeks ago, has brought results that have fairly snowed us under," said C. A. Emise, vice-president and sales manager of the Chandler company.

"The fact that we are in a position to make immediate deliveries of Chandler Sixes at the new price of \$1,595, has of course counted materially with the various dealers.

"Practically every Chandler dealer has doubled his orders for 1915, and in several cases we have had to tone down the enthusiasm of distributors who wanted to take three or four times their last season's allotment."

Unusual activity on the part of dealers all over the country followed the announcement of the \$1,595 Chandler. The Cleveland distributor closed up six sub-dealers in a single day.

### Forty-one Hour Non-Stop Run Chicago to New York

Ellmore C. Patterson, vice-president and general manager of P. F. Collier & Son, the publishers, arrived at the Vanderbilt Hotel Tuesday night, July 7, in his seven-passenger Packard 1913 automobile, after a non-stop run of forty-one hours from Chicago.

The run was made under the auspices of the Chicago Automobile Club and Mr. Patterson said that the record would stand as official.

The car left Michigan avenue and Twenty-fourth street, Chicago, at 3:48 a. m. Monday, Chicago time. It reached 242nd street, Manhattan, at 9:48 Tuesday night, eastern time. The trip from there to the Vanderbilt was made in about forty minutes.

### DECLARE YOUR INDEPENDENCE OF THE RAILROADS. Reach Seashore, Country or Mountains In Your Own Car.



Purchased from GORSON'S Reliable and Up-to-date in Every Detail

- 1914 OAKLAND Six, Touring, like new, whipcord upholstery, wire wheels, big bargain. \$1475
- 1914 CADILLAC Touring, practically new. Make offer. \$1475
- 1914 FORD Touring, equipped. \$475
- 1913 STUDEBAKER 4 cyl. Touring, equipped. \$475
- 1913 HUDSON Roadster, equipped, big bargain. \$475
- 1913 AMERICAN TRAVELER Roadster, like new, at a snap. \$350
- 1913 REIT Touring, equipped. \$475
- 1913 AND 1912 FORD Touring Cars. \$425
- 1913 RECAL Touring, equipped. \$425
- 1913 HUP "20" Roadster. \$475
- 1913 CHALMERS Six Touring, equipped, big bargain. \$475
- 1914 KLINE Six, electrically equipped, big bargain. \$475
- 1913 BUICK Touring, excellent condition. \$650
- 1913 HUDSON Touring, like new, equipped. \$500
- 1913 REIT Roadster. \$500
- 1913 EVERETT Six Touring, fully equipped. \$500
- 1913 HUP "20" Touring. \$500
- 1913 E.M.P. Touring. \$500
- 1913 R.C.H. Roadster. \$325
- 1913 HAYNES Touring, equipped, very little used, at a snap. \$325
- 1913 OVERLAND Touring, like new. \$325
- 1913 BUICK Roadster, equipped, at a bargain. \$325
- 1913 AND 1912 FORD Roadsters, equipped. \$325
- 1913 PLANERS Touring, equipped. \$325
- 1913 AMERICAN TRAVELER Touring. \$325
- 1913 MICHIGAN "40" Touring. \$625
- 1913 LOZIERE Touring, make offer. \$625

Agents Wanted in All Cities to Handle Our Line of Used Automobiles

### Gorson's Automobile Exchange

238-240 N. Broad St., Philadelphia, Pa.

Send for Free Bargain Bulletin. Open Sundays, 10 to 2.

### First Cycle-Car Run to Be Made in September

America's first cyclecar run which will be promoted by Chairman Chas. C. Percival of the National touring board of the Cyclecar Association of America on September 5, 6 and 7, will start at Newark and go to Atlantic City and return via Philadelphia.

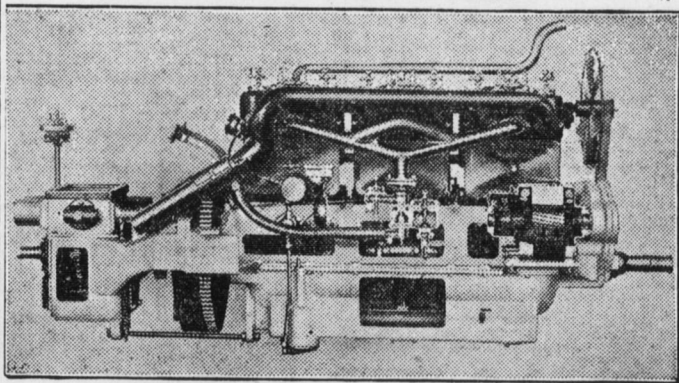
### Six-year-old Cadillac to Make Another Tour

A. S. Owens, of Birmingham, Ala., will soon start on a long cross-country motor tour which will take him eventually to San Francisco.

A cross-country trip, similar to the one now planned, was made by Mr. Owens in this car nearly five years ago, leaving Birmingham, he traveled to Detroit, then proceeded to Yellowstone Park and California, visiting Los Angeles and other western points.

DANCING AT HOME IS EASY The Victrola makes it so. We make the possession of a Victrola easy. Come in and ask about it. J. H. Troup Music House, 15 South Market Square.

### LATEST MOTOR ASIDE OF FIRST



RIGHT SIDE OF HAYNES SIX CYLINDER UNIT POWER PLANT Exhibit No. 56860 in Smithsonian Institution, Washington, D.C.

"There's a new exhibit in the Smithsonian Institute that's attracting a great deal of attention from visitors to the National Museum," said George F. McFarland, of the Harrisburg Automobile company, distributor in this territory for the Haynes, America's first car.

"The most important features of the power plant are shown clearly and comprehensively by having sections cut away from the various parts, so that the visitors to the institute are enabled to see the mechanical construction, and the relation of the component devices.

"On the right side of the engine, the intake and exhaust manifolds are shown in their natural position. A full vertical section of the Stromberg carburetor gives a good idea of how the gasoline is mixed with the air and supplied to the cylinders. The

Leece-Neville generator has its casing cut away to give a view of the windings and cores. Numerous windows disclose the crankshaft construction, and the oil reservoir. The transmission gears are also shown in this manner.

"Most of the electrical equipment is shown clearly on the left side of the motor. Here an interesting feature is the full vertical section of the American Simms high tension dual magnets. A half section has been removed from the rear cylinder, and the piston as well, to give a glimpse of the interior construction. A large portion of the Leece-Neville starting motor casing has been cut away. The cover plate on the switch controlling the starting motor has been replaced with a glass cover to display the method of completing the circuit from the battery to the motor.

"This exhibit of the Haynes power plant is very interesting indeed and well serves as a monument to the Haynes ingenuity and progress.

# Abbott-Detroit

## Prices Are Cut on Four-Cylinder Models

Right here is the opportunity you have been waiting for. At last you can buy a well-known and thoroughly high grade motor car at the price of a cheap and indifferently made car.

### Abbott Quality The New "Six" \$2290

Abbott-Detroit cars are famous for embodying only the highest grade and highest priced mechanical units, such as Continental motor, Warner transmission, Jacobson rear axle, Timken bearings, etc.

The new 60 H. P. six-cylinder Abbott is the smoothest running, most luxurious and most flexible car we know of selling at less than \$4,000.

HARRISBURG, BRANCH

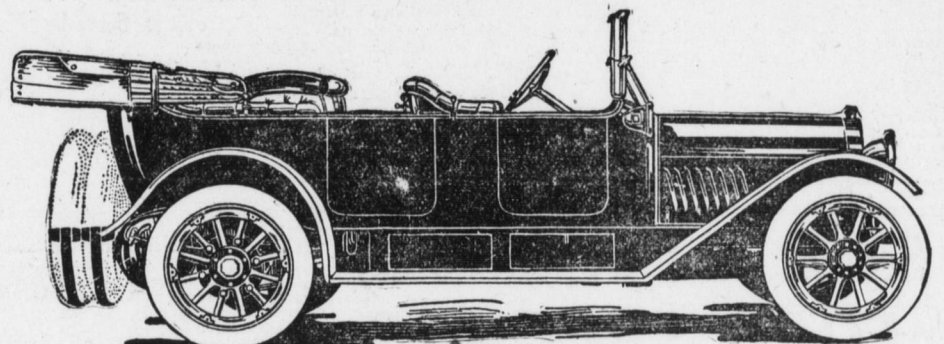
## Abbott Motor Car Co.

106-108 South Second Street

BELL 'PHONE 3593

HARRISBURG, PA.

Geo. J. Natcher, Manager



The New "Six"

### Harris Reports Good Business Outlook

F. A. Harris, commercial manager of the Hupp Motor Car company, has just returned from an extensive tour of the mid-western States, and he is very optimistic on the business outlook.

As Mr. Harris stated, things for the coming year are in excellent shape, and with the very large crops which abound throughout the middle west, there is no doubt but what we are going to go through a big season of prosperity.

"To escape a big season for 1915," said Mr. Harris, "with such crop reports as the government experts have given us, will be very difficult.

"The enthusiastic statements we have read lately on the conditions of the middle west are not exaggerated a bit, for I had my eyes opened on this recent trip. Kansas, Nebraska, Iowa and the Dakotas are certainly in for a record year, and the farmers are already busy with the 'bumper' harvest of winter wheat, which is estimated to be even greater than the largest record crop ever reported.

"One of the best informed south-western business men, said this week that the big crops meant between \$225,000,000 and \$300,000,000 of

money for the farmers and business men in the States of Missouri, Kansas, Oklahoma and Nebraska, and that money will be obtained in a short time.

"When the large movement of grain sets in, which will be about the middle of July, there is the best of reasons for expecting a genuine trade revival.

"The policy of the Washington administration in outlining its plans for the summer session, and also taking into confidence men of big business on matters of legislation is certainly going to have its effect on 1915 business."

### TAKES PLACE OF MAIL TRAIN

The motorcycle has solved a serious problem of the Bulletin, a daily paper of Bloomington, Ill. When the evening train over the Big Four was taken off, the Bulletin was at a loss how to serve its many subscribers at Gillum, Downs, Leroy, Farmer City and Mansfield, who had received their papers on this train. However the matter was soon settled by the employment of a motorcyclist, who now rides out to these towns each evening, delivers the papers to subscribers, and chug back to Bloomington in the early evening.

### THE POPULAR CAR THAT SELLS

REO HAYNES NATIONAL Reo and Chase Trucks

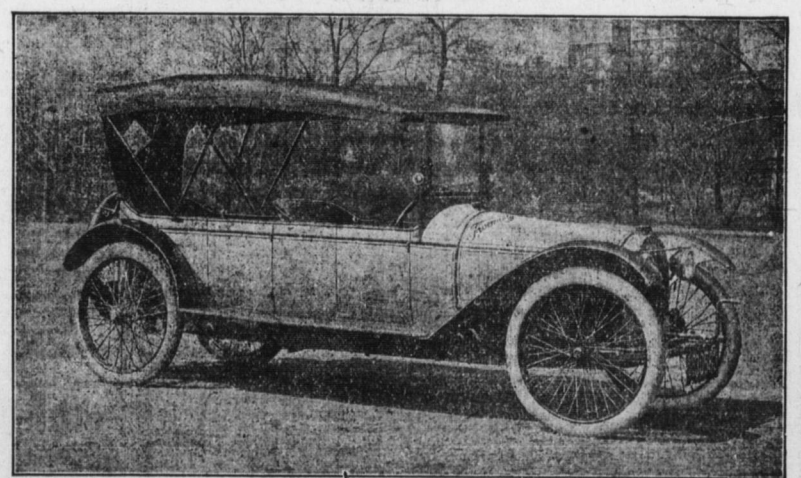
## HARRISBURG AUTO CO.

### 1915 MODEL IS HERE

# TWOMBLY

UNDERSLUNG LIGHT CAR

Price, including Tools, Horn and Lights, \$395 f. o. b. Sharon, Pa.



This new model, just in Saturday, amply demonstrates all ever claimed for the Twombly—the smartest small car; highest in practical efficiency—dependability and speed; lowest in first cost and upkeep, least in weight—700 lbs.; most delightful riding qualities—an unbroken chain of original improvements and fine equipment.

Four cylinder, water-cooled motor; friction drive; "live" rear axle; wire wheels; 100 in. wheel base; 38 in. tread.

## TROSTLE & MOURER MEHRING MOTOR CO.

983-939 ROSE AVE.

Phone for a Demonstration (Near 6th and Ross)

BELL PHONE 1367L

CALL 1991-ANY 'PHONE.

## Bowman's

HARRISBURG'S POPULAR DEPARTMENT STORE

### Automobile Tires and Tubes at Reduced Prices

Goodyear, Kelly-Springfield, Nassau and Imperial Tires and Tubes. All perfect stock; tires guaranteed 3,500 miles.

	Goodyear	Kelly-Springfield
30x3	Plain Non-skid \$ 9.49	Plain Kant-Slip \$13.98
30x3 1/2	12.69	14.69
32x3 1/2	13.69	15.69
34x4	19.49	22.98
37x5	33.69	39.49

	Nassau	Imperial
30x3	Plain Non-skid \$ 9.01	Plain Non-skid \$ 8.98
30x3 1/2	12.05	13.95
32x3 1/2	13.00	14.90
34x4	18.51	21.83
37x5	33.69	34.49

All other sizes at proportionate reductions. Third Floor—BOWMAN'S.

## SIMFLEX

Shock Absorbers Have Made Good!

The number of SIMFLEX sold since the local Auto Show is rapidly reaching the 100 mark. And NOT A KICK FROM ANY OF THE SATISFIED OWNERS.

We now have SIMFLEX for "Ford" cars. The Touring Season Is Now On so why not tour in comfort? Simflex give it.

Eureka Wagon Works, Agts.

A. H. Bailey North St., near 7th

## MILLER NON-SKID TIRES

Grip the Road Like a Cog-Wheel STERLING AUTO TIRE CO. 1451 Zarker St.

## VULCANIZING