

SAYS SULPHUR IS SURE TO RELIEVE ITCHING ECZEMA

Get an Ounce of Bold-Sulphur Cream and Heal Skin Eruptions Right Up

Any breaking out or irritation on the face, arms, legs or body when accompanied by itching, or when the skin is dry and feverish, can be relieved by applying a little bold-sulphur cream, says a noted dermatologist.

HOTEL POWHATAN WASHINGTON D.C. HOTEL OF AMERICAN IDEALS. Pennsylvania Avenue, 18th and H Streets. Best Located Hotel in Washington.

The Reading NEW GETTYSBURG-HARRISBURG Sunday Train. Leaves Gettysburg 7:15 A.M. Arrives Harrisburg 9:00 A.M.

AMUSEMENTS COLONIAL Last Day to See This Show Good Vaudeville Good Pictures 5 and 10 Cents

Sacred Band Concert Boiling Springs Park 8th REGIMENT BAND OF CARLISLE SUNDAY, JUNE 7, 2 P. M.

Paxtang Park To-night The Seminary Girls Cowan's Posing Dogs and 4-Other Big Acts-4 Matinee Tuesday, Thursday and Saturday.

PHOTOPLAY TO-DAY "The Treasure Ship," 2 reels. "Price of Drinks." "Widow Miggins' Wedding." ADMISSION 5c

FEW FOREST FIRES NOW REPORTED

Public Interest and Vigilance of the Wardens is Keeping Down the Annual Loss

PUBLIC SERVICE'S WORK

Orders Freight Agency on the Cumberland Valley; Burnham Man Makes a Kick

Pennsylvania has had fewer forest fires than usual this Spring, according to officials of the State Forestry Department, and it is attributed to the public interest in prevention of such fires and to the alertness displayed by the forest service and the wardens.

Reading reports a total of 1,100 idle cars on sidings along the main line awaiting call for service or repairs. At present only foreign cars, needing repairs are looked after at the Reading shops.

Godfried Bigler, aged 70 years, a Philadelphia division veteran, died at his home, Cordelia, Thursday. Up to two months ago Mr. Bigler was employed in the Pennsylvania Railroad roundhouse at Columbia.

Reading reports a total of 1,100 idle cars on sidings along the main line awaiting call for service or repairs. At present only foreign cars, needing repairs are looked after at the Reading shops.

Reading reports a total of 1,100 idle cars on sidings along the main line awaiting call for service or repairs. At present only foreign cars, needing repairs are looked after at the Reading shops.

Resorts MOUNT GRETNIA, PA. HOTEL CONEWAGO Mount Gretna, Pa. Located at head of Lake Conowingo.

RAILROAD NEWS

FEW IDLE CARS ON READING LINES

Business Is Slow; Foreign Equipment Receiving Close Attention in Shops

Reading reports a total of 1,100 idle cars on sidings along the main line awaiting call for service or repairs. At present only foreign cars, needing repairs are looked after at the Reading shops.

Godfried Bigler, aged 70 years, a Philadelphia division veteran, died at his home, Cordelia, Thursday. Up to two months ago Mr. Bigler was employed in the Pennsylvania Railroad roundhouse at Columbia.

Standing of the Crews

HARRISBURG SIDE Philadelphia Division—183 crew to go first after 2.30 p. m.: 128, 122, 105, 118, 110, 114, 121, 120, 109, 126, 127, 115, 112.

Middle Division—24 crew to go first after 2.30 p. m.: 20, 24, 25, 26, 27, 28, 29, 30, 31, 32, 33, 34, 35, 36, 37, 38, 39, 40, 41, 42, 43, 44, 45, 46, 47, 48, 49, 50, 51, 52, 53, 54, 55, 56, 57, 58, 59, 60, 61, 62, 63, 64, 65, 66, 67, 68, 69, 70, 71, 72, 73, 74, 75, 76, 77, 78, 79, 80, 81, 82, 83, 84, 85, 86, 87, 88, 89, 90, 91, 92, 93, 94, 95, 96, 97, 98, 99, 100, 101, 102, 103, 104, 105, 106, 107, 108, 109, 110, 111, 112, 113, 114, 115, 116, 117, 118, 119, 120, 121, 122, 123, 124, 125, 126, 127, 128, 129, 130, 131, 132, 133, 134, 135, 136, 137, 138, 139, 140, 141, 142, 143, 144, 145, 146, 147, 148, 149, 150, 151, 152, 153, 154, 155, 156, 157, 158, 159, 160, 161, 162, 163, 164, 165, 166, 167, 168, 169, 170, 171, 172, 173, 174, 175, 176, 177, 178, 179, 180, 181, 182, 183, 184, 185, 186, 187, 188, 189, 190, 191, 192, 193, 194, 195, 196, 197, 198, 199, 200, 201, 202, 203, 204, 205, 206, 207, 208, 209, 210, 211, 212, 213, 214, 215, 216, 217, 218, 219, 220, 221, 222, 223, 224, 225, 226, 227, 228, 229, 230, 231, 232, 233, 234, 235, 236, 237, 238, 239, 240, 241, 242, 243, 244, 245, 246, 247, 248, 249, 250, 251, 252, 253, 254, 255, 256, 257, 258, 259, 260, 261, 262, 263, 264, 265, 266, 267, 268, 269, 270, 271, 272, 273, 274, 275, 276, 277, 278, 279, 280, 281, 282, 283, 284, 285, 286, 287, 288, 289, 290, 291, 292, 293, 294, 295, 296, 297, 298, 299, 300, 301, 302, 303, 304, 305, 306, 307, 308, 309, 310, 311, 312, 313, 314, 315, 316, 317, 318, 319, 320, 321, 322, 323, 324, 325, 326, 327, 328, 329, 330, 331, 332, 333, 334, 335, 336, 337, 338, 339, 340, 341, 342, 343, 344, 345, 346, 347, 348, 349, 350, 351, 352, 353, 354, 355, 356, 357, 358, 359, 360, 361, 362, 363, 364, 365, 366, 367, 368, 369, 370, 371, 372, 373, 374, 375, 376, 377, 378, 379, 380, 381, 382, 383, 384, 385, 386, 387, 388, 389, 390, 391, 392, 393, 394, 395, 396, 397, 398, 399, 400, 401, 402, 403, 404, 405, 406, 407, 408, 409, 410, 411, 412, 413, 414, 415, 416, 417, 418, 419, 420, 421, 422, 423, 424, 425, 426, 427, 428, 429, 430, 431, 432, 433, 434, 435, 436, 437, 438, 439, 440, 441, 442, 443, 444, 445, 446, 447, 448, 449, 450, 451, 452, 453, 454, 455, 456, 457, 458, 459, 460, 461, 462, 463, 464, 465, 466, 467, 468, 469, 470, 471, 472, 473, 474, 475, 476, 477, 478, 479, 480, 481, 482, 483, 484, 485, 486, 487, 488, 489, 490, 491, 492, 493, 494, 495, 496, 497, 498, 499, 500, 501, 502, 503, 504, 505, 506, 507, 508, 509, 510, 511, 512, 513, 514, 515, 516, 517, 518, 519, 520, 521, 522, 523, 524, 525, 526, 527, 528, 529, 530, 531, 532, 533, 534, 535, 536, 537, 538, 539, 540, 541, 542, 543, 544, 545, 546, 547, 548, 549, 550, 551, 552, 553, 554, 555, 556, 557, 558, 559, 560, 561, 562, 563, 564, 565, 566, 567, 568, 569, 570, 571, 572, 573, 574, 575, 576, 577, 578, 579, 580, 581, 582, 583, 584, 585, 586, 587, 588, 589, 590, 591, 592, 593, 594, 595, 596, 597, 598, 599, 600, 601, 602, 603, 604, 605, 606, 607, 608, 609, 610, 611, 612, 613, 614, 615, 616, 617, 618, 619, 620, 621, 622, 623, 624, 625, 626, 627, 628, 629, 630, 631, 632, 633, 634, 635, 636, 637, 638, 639, 640, 641, 642, 643, 644, 645, 646, 647, 648, 649, 650, 651, 652, 653, 654, 655, 656, 657, 658, 659, 660, 661, 662, 663, 664, 665, 666, 667, 668, 669, 670, 671, 672, 673, 674, 675, 676, 677, 678, 679, 680, 681, 682, 683, 684, 685, 686, 687, 688, 689, 690, 691, 692, 693, 694, 695, 696, 697, 698, 699, 700, 701, 702, 703, 704, 705, 706, 707, 708, 709, 710, 711, 712, 713, 714, 715, 716, 717, 718, 719, 720, 721, 722, 723, 724, 725, 726, 727, 728, 729, 730, 731, 732, 733, 734, 735, 736, 737, 738, 739, 740, 741, 742, 743, 744, 745, 746, 747, 748, 749, 750, 751, 752, 753, 754, 755, 756, 757, 758, 759, 760, 761, 762, 763, 764, 765, 766, 767, 768, 769, 770, 771, 772, 773, 774, 775, 776, 777, 778, 779, 780, 781, 782, 783, 784, 785, 786, 787, 788, 789, 790, 791, 792, 793, 794, 795, 796, 797, 798, 799, 800, 801, 802, 803, 804, 805, 806, 807, 808, 809, 810, 811, 812, 813, 814, 815, 816, 817, 818, 819, 820, 821, 822, 823, 824, 825, 826, 827, 828, 829, 830, 831, 832, 833, 834, 835, 836, 837, 838, 839, 840, 841, 842, 843, 844, 845, 846, 847, 848, 849, 850, 851, 852, 853, 854, 855, 856, 857, 858, 859, 860, 861, 862, 863, 864, 865, 866, 867, 868, 869, 870, 871, 872, 873, 874, 875, 876, 877, 878, 879, 880, 881, 882, 883, 884, 885, 886, 887, 888, 889, 890, 891, 892, 893, 894, 895, 896, 897, 898, 899, 900, 901, 902, 903, 904, 905, 906, 907, 908, 909, 910, 911, 912, 913, 914, 915, 916, 917, 918, 919, 920, 921, 922, 923, 924, 925, 926, 927, 928, 929, 930, 931, 932, 933, 934, 935, 936, 937, 938, 939, 940, 941, 942, 943, 944, 945, 946, 947, 948, 949, 950, 951, 952, 953, 954, 955, 956, 957, 958, 959, 960, 961, 962, 963, 964, 965, 966, 967, 968, 969, 970, 971, 972, 973, 974, 975, 976, 977, 978, 979, 980, 981, 982, 983, 984, 985, 986, 987, 988, 989, 990, 991, 992, 993, 994, 995, 996, 997, 998, 999, 1000.

ENOLA SIDE Philadelphia Division—226 crew to go first after 3.15 p. m.: 254, 239, 213, 207, 229, 245, 209, 223, 255, 223, 211, 237, 222, 245, 206, 219.

HARRISBURG DIVISION—17 crew first to go after 2 p. m.: East-bound, after 2.45 p. m.: 53, 64, 67, 62, 61, 62, 59, 70, 68, 56, 52, 69, 58.

Bessemer Motor Trucks To Be Used by Dairy Men

A one-ton Bessemer motor truck chassis has been received by I. W. Dill, and a special body will be constructed to meet the requirements of H. H. Cook, the dairyman.

John W. Davis, who makes his home with his daughter, Mrs. George Heckert, at 435 Reilly street, has been seriously ill for some time. He is so recuperating that he has been removed to the home of his son, William Davis, 624 Ross street, where he will further recuperate.

STEELTON MIDDLETOWN & HIGHSPIRE ROYALTON OBERLIN & ENNAUT

STEELTON VAGRANTS TO WORK ON STREET

Burgess Wigfield to Ask Council For Passing of Necessary Ordinance

Steelton's drunks and panhandlers will give a chance to reform on the stone pile if plans of Burgess Fred Wigfield materialize.

Grace U. E.—The Rev. J. H. Shoop, pastor, Sunday School, 9.15 a. m.; morning service, 10.30 a. m.; evening service, 7.30 p. m.

STEELTON CHURCHES Grace U. E.—The Rev. J. H. Shoop, pastor, Sunday School, 9.15 a. m.; morning service, 10.30 a. m.; evening service, 7.30 p. m.

STEELTON SNAP SHOTS

Held Festival To-night.—The Hygiene Home Company will hold an evening festival in front of the Home House, in Harrisburg street, this evening.

Word was received here to-day of the death of Mrs. Elsa B. A. Metzger, a former resident. Mrs. Metzger-Schade died at the home of her brother, H. E. Metzger, in Austin, Texas, Tuesday, June 2, at 2 o'clock.

Word was received here to-day of the death of Mrs. Elsa B. A. Metzger, a former resident. Mrs. Metzger-Schade died at the home of her brother, H. E. Metzger, in Austin, Texas, Tuesday, June 2, at 2 o'clock.

Word was received here to-day of the death of Mrs. Elsa B. A. Metzger, a former resident. Mrs. Metzger-Schade died at the home of her brother, H. E. Metzger, in Austin, Texas, Tuesday, June 2, at 2 o'clock.

Word was received here to-day of the death of Mrs. Elsa B. A. Metzger, a former resident. Mrs. Metzger-Schade died at the home of her brother, H. E. Metzger, in Austin, Texas, Tuesday, June 2, at 2 o'clock.

Word was received here to-day of the death of Mrs. Elsa B. A. Metzger, a former resident. Mrs. Metzger-Schade died at the home of her brother, H. E. Metzger, in Austin, Texas, Tuesday, June 2, at 2 o'clock.

Word was received here to-day of the death of Mrs. Elsa B. A. Metzger, a former resident. Mrs. Metzger-Schade died at the home of her brother, H. E. Metzger, in Austin, Texas, Tuesday, June 2, at 2 o'clock.

Word was received here to-day of the death of Mrs. Elsa B. A. Metzger, a former resident. Mrs. Metzger-Schade died at the home of her brother, H. E. Metzger, in Austin, Texas, Tuesday, June 2, at 2 o'clock.

Word was received here to-day of the death of Mrs. Elsa B. A. Metzger, a former resident. Mrs. Metzger-Schade died at the home of her brother, H. E. Metzger, in Austin, Texas, Tuesday, June 2, at 2 o'clock.

Word was received here to-day of the death of Mrs. Elsa B. A. Metzger, a former resident. Mrs. Metzger-Schade died at the home of her brother, H. E. Metzger, in Austin, Texas, Tuesday, June 2, at 2 o'clock.

\$10,000 FIRE IN MIDDLETOWN STORES

Blaze Started in Steam Laundry; Cause Has Not Yet Been Decided

Fire early this morning gutted the Young building, the Reitzel grocery store and the plant of the Middletown Steam Laundry, at Middletown.

Under the direction of the drill team of the Rescue Hose Company, a vaudeville show and moving picture exhibition will be given in the Realty Theater, Monday evening.

Indian Conquering Foreign Race Tracks

"Never in the annals of motor-cycling has there been such a brilliant and masterly clean-up of prominent international events by an American machine, as the invincible Indian has scored this season.

DISFIGURED WITH PIMPLES ON FACE

Neck and Shoulders. Itched and Were Very Sore. Clothing Irritated Them. Used Cuticura Soap and Ointment. Now Face Clear.

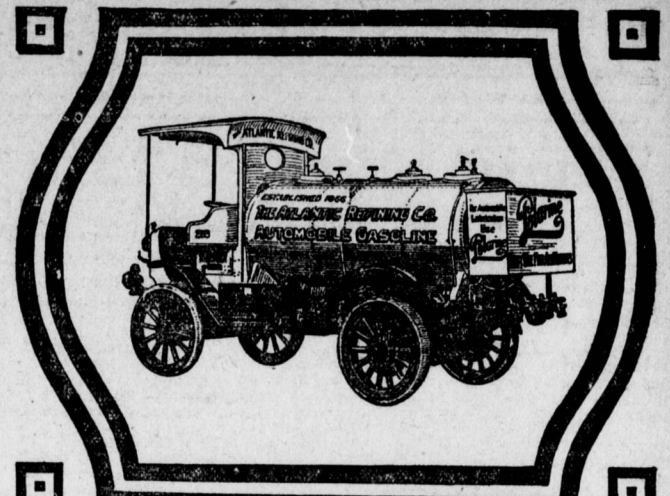
USED CARS AT PRACTICALLY YOUR OWN FIGURE

Must be sold within next week. A better chance for you never existed. See us quick.

ABBOTT MOTOR CAR CO.

New 1913 Michigan 33—A rare bargain. Rambler, 7-passenger, A1 condition. Pullman, 6-cylinder, a snap for quick buyers.

Try Telegraph Want Ads

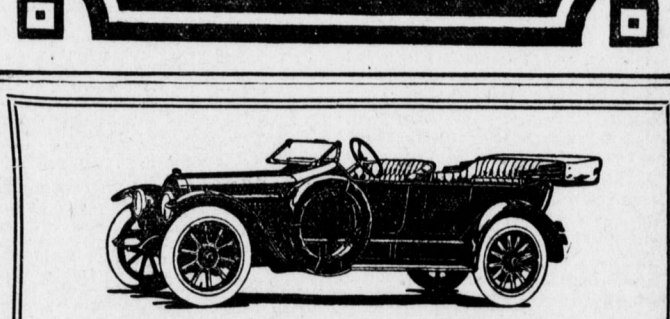


ATLANTIC AUTOMOBILE GASOLINE

Let Our Tank Wagon Service Supply You

Our tank wagon service is saving money, time and worry for any number of Pennsylvania motorists. If you have storage facilities we deliver Atlantic Automobile Gasoline right into your tank.

The Atlantic Refining Company



We Are Taking Orders For the New 1915 Hudson

For early delivery. Why buy an old model when the new one is available? 21 new refinements and improvements will be found in the New Hudson Six-40, which will sell at a surprisingly popular price.

Sold by I. W. DILL

East End of Mulberry Street Bridge BELL 1306R

Abbott Motor Car Co. Harrisburg Branch 106-108 S. Second St. Bell Phone 3593