

# RAILROAD NEWS

## Judge Lovett Points Out the

### Faults in New Railroad Bill

Judge R. S. Lovett at the Senate hearing on Wednesday on interlocking railroad directors made the following points:

"Instead of developing those lines this bill would turn the wheels of progress backward and destroy these great systems."

"If the Interstate Commerce Commission had its way as this bill proposes the New York Central line would terminate at Buffalo and give up its voice in the control of any lines west of Buffalo. The Pennsylvania Railroad would be cut in two at Pittsburgh, because it could have no officers in common with the lines it is interested in west of that point. The Baltimore and Ohio would terminate

at Petersburg, W. Va., and be cut off from its present service to St. Louis. The Southern Pacific, which has a continuous service clear across the continent, would be broken into seven or eight fragmentary lines.

"This bill were to be enacted a great many systems might become bankrupt and go into the hands of receivers because they could not finance themselves."

"Harris, general counsel for the New York Central lines, said: 'What this measure needs is thought and more thought. While there may be some good things in the bill, it is full of crudities, the effect of which would be to put the road in a straitjacket.'

## NEW FREIGHT RATES ARE EXPECTED SOON

### Preparations in Philadelphia Indicate a Near Future Announcement; Denial From Officials

Interest on the part of railroad officials was centered on Washington, D. C., to-day. It is the general belief that the decision on the freight rate controversy will be given out to-day or to-morrow.

That some announcement is due very soon is shown by the activity at the general freight department of the Pennsylvania Railroad at Philadelphia and at all division headquarters along the main line, including Harrisburg. New rates have been compiled and are ready for approval. It is expected that an increase of from 2 to 3 1/2 percent will be granted. A dispatch from Philadelphia says:

"In advance of any decision from the Interstate Commerce Commission, railroads of the country, it became known yesterday, have already invested \$1,500,000 in printing new freight tariff schedules calculated on the basis of the 5 percent increase now before the commission.

"Thousands of galleys of these tariff schedules are now standing in the shops of a local company. They represent the schedules proposed by railroads with terminals in this city.

"According to the printers, the type is nearly a complete word from the commerce commission's decision will be broadcast as notice to shippers that the high cost of transportation has gone higher.

"That the railroads have already spent \$1,500,000 on type for these schedules is taken as an indication that they feel certain the increased tariff will be allowed.

"It is strongly denied by the railroads, however, that they have the slightest intimation of what the commerce commission's decision will be.

**Relief Payments.**—The sum of \$277,631 was paid out during April by the relief departments of the Pennsylvania railroad system in disability and death benefits. Of this total \$187,543 represented the payments for disability and \$90,088 the death benefits. Twenty-seven percent of the disability payments were on account of accidents and 73 percent of the death benefits were paid for the same cause.

The total amount paid out in benefits of all kinds since the relief departments were started on the eastern lines in 1886 and on the western lines in 1889 has been \$38,732,928.

**Many Men Idle.**—The number of employees on the Pennsylvania Railroad Lines East of Pittsburgh on May 1, 1913, was 144,660, while on May 1, 1914, it was 132,567. The latter figures include some 10,000 to 12,000 men who have been earning money but whose names are retained on the rolls of the company. With earnings decreasing it is believed in some quarters that the Pennsylvania is holding up its steel rail order pending the decision of the advanced rate case by the Interstate Commerce Commission. If the increase is not granted or only a portion allowed the order will probably be smaller than in recent years. Normally the order would have been given last October.

**Gettysburg Excursion.**—The Pennsylvania Railroad Company will run an excursion to Gettysburg from Altoona on Sunday, June 14. The train will leave at 7:30 in the morning, arriving at the historic town shortly after noon. On the return trip it will leave Gettysburg at 5:30 in the afternoon, arriving in Altoona at midnight.

**New Reading Engine.**—Freight engine 1616, recently constructed at the Reading shop of the Reading railway is being tried out on the various divisions. This engine is equipped with a Jacob Shupert boiler. The object of first sending this locomotive to Coatesville was for the purpose of placing it on exhibition during the visit of about 500 master boiler-makers. The latter have been holding a convention in Philadelphia and were taken to Coatesville on a special train, with a view of taking a look at the engine and inspecting the works of the Lukens Iron and Steel Company.

**Dies Like His Father.**—Dying suddenly in bed last night in exactly the same manner as his father died 24 years ago, William W. Green, 61 years old, ended probably the longest continuous period of service in one position of any man in the Pennsylvania Railroad's employ. He was a crew caller for 46 years.

His father Nathan W. Green, was the first crew caller ever employed by the company at Altoona.

## Standing of the Crews

### HARRISBURG SIDE Philadelphia Division

102 crew to go first after 4 p. m.: 119, 124, 107, 104, 108, 128, 132, 105, 118, 110, 114. Firemen for 107, 119, 128. Firemen for 101, 104, 107, 114, 119, 121.

Conductors for 102, 114. Flagman for 124. Brakemen for 108, 105, 114. Engineers up: Riley, Cox, Baltoser, Gause, Allen, Willard, Dengler, Wolfe, McGinnis, Coleman, Ferguson, Watta.

Middle Division — No crews to go after 4 p. m. Laid off: 24. Preference: 1, 5. Engineer for 25. Engineers up: Bennett, Garman, Kugler, Magill, Briggs, Clouser, Mumma, Hills.

Firemen up: Borman, Drewett, Potolger, Fletcher, Liebau, Reeder, Arnold, Schreffler, Wright, Gross, Sheesley.

Conductors up: Bogner, Patrick. Firemen up: Jacobs. Brakemen up: Stahl, Werner, Blecker, Kieffer, Bell, Plack, Roller, Troy, Fitt, Wenrich.

**YARD CREWS** Engineers up: Crist, Harvey, Saltzman, Kuhn, Peiton, Shaver, Landis, Hoyer, Beck, Harter, Biever, Blosser, Breneman, Thomas, Rudy, Houser, Meyer, Steyer, Walz. Firemen up: Bostdorf, Scheffler, Rauch, Weigle, Lucky, Cookerly, Mays, Shott, Snell, Bartolet, Getty, Hart, Barkley, Sheets, Bair, Eyde, Crow, Ush. Engineers for 707, 1368. Firemen for 1758, 90, 118.

**ENOLA SIDE** Philadelphia Division — 225 crew to go first after 4.45 p. m.: 220, 241, 208, 231, 249, 214, 228, 251, 247, 204, 242, 207, 218, 223. Engineers for 225, 224, 228, 242. Firemen for 216, 214, 215. Conductors for 98, 47, 10, 41. Firemen for 03, 04. Brakemen for 08, 24, 41, 49, 51. Conductors up: Foxney, Stauffer, Hinkle, Steiner, Lingle, Eaton, Pennell, Walton, Gundie, Veit.

Firemen up: Snyder, Kroh. Brakemen up: Vaudling, Carroll, Felker, Hivner, Gochenour, Long, Rice, Desch, ardy, Malsed, Mumma, Wolfe, Boyd, Goudy, Fair, Campbell, Mumma, Hills.

Middle Division — 108 crew to go first after 2.3 p. m.: 102, 107. Laid off: 111, 113, 103. Engineer for 108. Brakemen for 108, 102.

**READING CREWS** P. H. & P. after 12.15 p. m.: 1, 15, 15, 8, 3, 11. East-bound after 6.15 a. m.: 65, 71, 51, 54, 53, 64, 67, 63, 61, 62, 59, 70. Conductor up: Gingham. Engineers up: Bonawitz, Wireman, Wood, Lape, Sassaman, Martin, Tip-ton, Morrison, Richwine, Kottner, Masimore, Crawford, Nye, Brown, Boyer, Bowers.

Firemen up: Stephens, Kolbert, Lex, Anders, Zukowski, Veit, Dowhower, Kumbach, Kumbach, Moyer, Hollenback, Nye, Brown, Boyer, Bowers.

Firemen up: Mumma, Creager, Martin, Carlin, Taylor, Snyder, Shearer, Miles, Gardner, Dunkle, Epley, Cook, Maurer, Bush, Hartz, Resch, Shader.

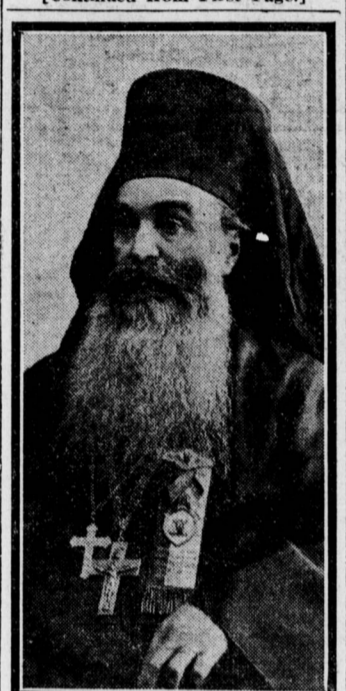
## Perkins Believes T. R. Will Run For Governor

By Associated Press  
Des Moines, Iowa, June 5.—Theodore Roosevelt is seriously considering the proposition of becoming the Progressive candidate for Governor of New York, according to a letter received by David Hinshaw, national Progressive organizer here, from George W. Perkins, of New York. Some of Colonel Roosevelt's plans for the campaign were told by Mr. Perkins in a letter which contains the following paragraph:

"When he first came home he said that he did not see how he could possibly do this, but when he left here I think he was weighing the matter with great care and that if he makes up his mind that duty calls him to make the race here for the sake of conditions existing in this state and because of the Progressive demand for him he will get into the race and accept the nomination for Governor."

## FORMER RECTOR GOES TO WORK

[Continued from First Page.]



THEOPHIL STEFANOVIC, Abbot

by the allied armies in the recent Balkan war.

Father Stefanovic has written an interesting letter to one of his friends in Steelton telling in a modest way of his noble work and how the people of the territory that was ravaged, burned and devastated by the contending forces in the recent war, are hard at work to restore the land to its former prosperity.

About a year ago the venerable priest made a sorrowful farewell to the members of the faction-st. St. Nicholas Church in Steelton and set sail for the historic old abbey on Mt. Athos, about which so many romantic tales have been woven. Here he planned to spend his remaining days in comfortable study and seclusion. Inspired by the beautiful green fields and balmy sea breezes, he hoped to be able to complete several books which he was writing.

**Hears of Work to Do**

His plans, however, were changed. Shortly after his arrival at the abbey he heard how King Peter of Serbia, backed by the great powers, was planning to restore the devastated provinces wrested from the Turks to their former prosperity. This was a big undertaking. The land was devastated, the buildings were burned and many families, particularly of the lower classes, had lost their sturdiest men. The war had left many scars.

King Peter sent a call to the Abbey on Mt. Athos for some of the sturdiest

# GREAT CLEARANCE SALE OF MEN'S and WOMEN'S APPAREL

### AT SUCH PRICE REDUCTIONS THAT WILL MAKE IT APPEAL TO THRIFTY FOLKS REDUCTIONS AVERAGE 1/3 to 1/2 OFF

Payments to Suit Your Own Convenience



FILL your wants now. Stock complete in every detail and everything reduced so low, that the prices are even cheaper than you can get for cash, and we'll just as cheerfully charge it as if you paid cash.

She—We must dress well to keep up appearances. He—Well, let's take advantage of this sale, and, besides, "We Can Pay as We Get Paid."

"PAY AS YOU GET PAID"

ASK YOUR FRIENDS WHO ARE OUR CUSTOMERS NO COLLECTORS UNLESS YOU WANT THEM.

You Can Make Payments at Office.

OUR SYSTEM A SOLUTION TO THE HIGH COST OF LIVING PROBLEM.

THE SAME LOW PRICES CASH OR CREDIT



THE FOLLOWING ITEMS ARE EXAMPLES OF THE TREMENDOUS REDUCTIONS

### WOMEN'S DEPT. SPECIALS

**\$1.00 WOMEN'S LINGERIE WAISTS**  
All over Embroidered Fronts, all good fitting, Beautiful Waists, all sizes. Short and 3/4 sleeves, low necks and new Dutch collars; worth \$1.00; at **49c**

**\$15.00 to \$18.00 WOMEN'S STYLISH SPRING SUITS**  
Some of these Suits were even marked higher than the value we state, but we want you to be surprised at the wonderful styles and materials. You have never bought such suits for less than \$15.00 and \$18.00, now **\$8.98**

**\$20.00 & \$25.00 WOMEN'S SUITS**  
Most of our best suits are in this lot. Every approved style and material. All the new colors; two and three tier skirts. New effect coats. No woman needs do without a stylish when she can get such values, and on credit, too, if you want it. **\$12.50**

### MEN'S DEPT. SPECIALS

**\$15.00 MENS ALL WOOL SUITS**  
A big range of colors made into one of the most approved sack models. Every one out of our own stock and not one that we sold for less than \$15.00, in this sale at **\$9.98**

**\$20.00 MEN'S ALL WOOL SUITS**  
Come and see this price, you can't duplicate them anywhere; over one hundred suits to select from at this price, and you never saw such value at **\$14.75**

**\$25.00 MEN'S BEST TAILORED SUITS**  
We make all our Men's Clothing, and that we make it well is guaranteed you by us and the many satisfied customers we have. Think it over—you can buy a \$25.00 Suit for \$19.75, and can pay for it as you get paid, and wear it while paying **\$19.75** for it.



## CITY'S NATURALISTS GIVE FOLK CHANGE

[Continued from First Page.]

tween a fleur-de-lis and a snap dragon.

The initial outing to-morrow will be a trip to Wildcat Falls, opposite Columbia. The train will leave the Pennsylvania station at 7:05 to-morrow morning, and will return at 4 to-morrow evening. Those who wish to go are advised in a circular issued by the society that they may take a basket lunch with them or they may be served a chicken and waffle dinner at the hotel. Those who desire dinner at the hotel should communicate with Dr. George C. Potts, Third and Herr streets.

Upon alternate Saturdays during the summer the trips instead of occupying a full day will be half-day affairs as is indicated in the following schedule:

June 20.—New Cumberland. Leave Square 1.15 P. M.  
July 11.—Hunter's Run. Leave 7.20 A. M., Reading Station. Return from Upper Mill 5.04 P. M.  
July 25.—Lingestown. Leave Square 1 P. M.  
August 8.—Cove Mountain. Leave Square 9 A. M. for Marysville. Return from Cove Station, P. R. R., 5.40 P. M.  
August 22.—Hummelstown Cave. Leave Square 1 P. M.

**Lutheran Reunion at Reservoir Park June 25**

The date and tentative plans for the Lutheran reunion were announced to-day. This annual event, under the auspices of the Lutheran Brotherhood of Harrisburg will take place at Reservoir Park, June 25, and about 5,000 from Harrisburg and surrounding places are expected to participate in a day of sports and recreations. The Rev. J. Bradley Markward is chairman of the various committees now busily engaged in elaborating the plans. An address will be delivered by the Rev. W. H. Feldman, of New York city, who is soon to take a pastorate at York, Pa.

One of the features of the day will be the presence of the boys' band from the Leysville Orphans' Home.

**HENRY H. HUTMAN**  
Henry H. Hutman, aged 49, a machinist, died yesterday afternoon at his home, 1216 James street. Funeral services will be held to-morrow afternoon at 2 o'clock. Burial will be made in the Harrisburg Cemetery.

**A Full Set of Teeth, \$5**

NOTE MACK'S SUGGESTIONS

NO GUMS ROOFS

**MACK'S**

PAINLESS DENTISTS

310 MARKET STREET

Come in the morning. Have your teeth made the same day. Plates repaired on short notice. Open Days and Evenings.

# FURNITURE RUGS and CARPETS

SO MUCH depends on making a right beginning, that those who wed in the month of June should consider carefully the right kind of furnishings to buy and where they may be bought at a right price. Furniture and carpets are not bought to last for a few weeks or months but for years, and usually to last a lifetime. This store has an excellent assortment on four large floors at prices that challenge comparison with similar quality at any other store.

**Specials That Must Be Seen to Be Appreciated:**

- BRASS BED, FULL SIZE; TWO-INCH POSTS, BRIGHT or satin finish; absolutely guaranteed. City price \$20.00. Our price \$14.50**
- BRASS BED, COLONIAL PATTERN; FULL SIZE; TWO-INCH POSTS, satin finish; fully guaranteed. City price \$23. Our price \$16.00**
- BRASS BED, NEW POLET FINISH, COLONIAL PATTERN; full size; two and one-fourth inch posts; one and one-fourth inch fillers, trimmed with the new inlaid mounts. City price \$27.00. Our price \$19.50**
- BRASS BED, PERIOD STYLE, SQUARE TUBING, ONE and one-half inch posts, ten three-fourth-inch fillers, one-inch top rail; complete with castor cups; bright or satin finish. City price \$28.00. Our price \$19.75**
- BRASS BED, NEW POLET FINISH, CONTINUOUS POST and two top rails, two and one-half inches thick with ten one and five-eighth-inch fillers. City price \$31.00. Our price \$23.50**
- BEDROOM SUITE, SOLID GOLDEN OAK, SEVEN pieces consisting of dresser, washstand, bed, two chairs and bedroom table to match; glass on dresser, French plate and head and footboard on bed has the roll design. City price \$34.00. Our price \$27.00**
- ENLARGER COUCH BED CONVERTIBLE INTO BED at night and couch in day time; equipped with best National top spring; felt cushions covered with green denim; so simple any child can operate same. \$16.50**
- CLOTHES TREES FOR BEDROOM; \$1.00 VALUE. Special at \$79c. \$1.50 value at \$1.19**
- MACEY SECTIONAL BOOKCASES TO MATCH ALL OUR living room furniture; fumed oak; early English and mahogany. The best bookcases on the market. Write for catalog.**
- PARLOR SUIT IN MAHOGANY FINISH WITH SOLID mahogany back panels, upholstered in green plush. Regular \$75 value. Special \$49.00**
- FRENCH DRESSER IN CIRCASSIAN WALNUT; 40x10 inch mirror; one large drawer; full width of dresser and two smaller drawers on either side of mirror; designed especially to take place of toilet table. A fine piece of furniture for boudoir. \$90.00**
- LIBRARY SUITS IN SOLID CIRCASSIAN WALNUT Colonial pattern with number one Spanish leather upholstery; settee, rocker and armchair with full spring seat. This suit is as fine as can be found in the best store of the country. City price \$110.00. Our price \$64.00**
- LIBRARY SUIT, SHERATON PATTERN, GOLDEN OAK frame, genuine Spanish leather. City price \$80.00. Our price \$64.00**
- LIBRARY SUIT IN MAHOGANY FINISH, THREE pieces upholstered in genuine Spanish leather and spring seat. City price \$34.00. Our price \$27.00**
- WHITTALL RUGS AND OTHER SPLENDID MAKES OF Rugs, as well as a dependable line of carpets and floor coverings of all kinds.**

**New Cumberland, Penna. M.A. HOFF, Fourth and Bridge Sts.**

Carfare Refunded to All Comers. Motor Car Delivery to Harrisburg and Vicinity. Freight Paid on All Purchases to Points Within 100 Miles