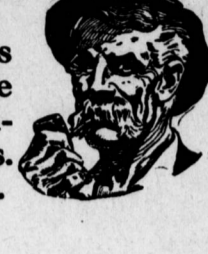


The man that wears a sour face Will find th' world a lookin'-glass; While he that fights with smilin' face Will find his troubles lightly pass.



VELVET, The Smoothest Smoking Tobacco, for blue-days or joyous-ways. Full weight 2 oz. tins, 10c.

Impressive Service at Ohev Sholem as Six Children Are Confirmed

A class of six was confirmed yesterday at Ohev Sholem Temple in the presence of a large congregation, which included visitors from Philadelphia, New York and Baltimore.

EFFICIENT BABIES IS NOW THE PLAN

Mothers Can Bring Infants to Physician to Be Examined

Baby should grow round and pink and fat and smiling and good-humored and most anything else that makes for the best baby.

These tips as to how to make the youngest lady and the youngest man of the family a better girl and a better young fellow all around are embodied in a circular issued by the society in connection with the instructions as to bringing baby to the society's station.

The milk station is located at 1109 Green street and the physician is on duty there to examine and weigh the baby and to see to its wants and needs every Tuesday and Friday mornings at 10 o'clock.

A formula is prepared by the physician which the nurse takes to the home and in the presence of the mother modifies the milk. The mother is given instruction at the same time. On the next visit the milk is modified by the mother under the nurse's eye.

Here are the "tips" as to the care and comfort of the baby as issued by the society:

The baby Nine months before birth and the first year after are from a health standpoint the most important. More than 1,000 babies die annually in Pennsylvania during the first year of life.

Put your baby to sleep out of each twenty-four is the rule for the first month, with abundant rest and freedom from excitement all through infancy.

Screen the windows and the baby's crib (to keep out the flies). Do not spit on the floor.

The baby's room should be the best ventilated in the house, and free from dust, smoke, fumes and gases.

PAKTANG PARK Manager Davis has one of those headline-making events for his Paktang Park Theater, this week, that never fails to please a Harrisburg audience.

That noon-hour luncheon that is specially prepared for the busy men of Harrisburg at the Columbus Cafe is surely a delicious luncheon for 40 cents.

Resorts THE IDEAL PLACE FOR YOUR SUMMER VACATION WILDWOOD BY THE SEA

Home like hotels, boardwalk attractions, best bathing and fishing. Write immediately for full information and handsome booklet to J. Whitesell, City Clerk, Wildwood, N. J.

Hotel STRAND ATLANTIC CITY, N. J. THE LATEST FIREPROOF HOTEL

On beach directly between the two great Ocean Piers. Music and dancing. Capacity 600.

GLASSES Scientifically fitted by the latest methods and without use of drugs. W. FORREY 1308 MARKET ST.

FOREMAN SAILS FOR EUROPE Special to The Telegraph Sunbury, Pa., June 1.—Arnold Hansen, a foreman at the Susquehanna silk mills, Sunbury, sails to-day for his old home in Europe.

Physicians to Hear Talk on Blindness and Its Prevention

The Dauphin County Medical Society and the Harrisburg Academy of Medicine have issued the June number of the Dauphin Medical Academician. The calendar for the present month shows that to-morrow evening at 8.30 o'clock a meeting will be held by the Dauphin County Medical Society when an address will be delivered by Walter W. Stamm, executive secretary of the Pennsylvania Association for the Blind.

Next Friday evening, June 5, at 8.31 o'clock, a meeting will be held by the Council of the Harrisburg Academy of Medicine at its headquarters, 319 North Second street, Friday evening, June 26, at 8.30 o'clock, a meeting of the Harrisburg Academy of Medicine will be held.

The following local committee for Red Cross medical work has been appointed: Dr. J. O. Kistner, chairman; H. Fager, Jr., E. R. Whipple, G. L. Lavery. The object of this committee is to select reputable and capable physicians to give assistance in times of distress occurring in this vicinity.

LEGAL NOTICES

SEALED PROPOSALS COMMONWEALTH OF PENNSYLVANIA State Highway Department

SEALED PROPOSALS will be received at the office of the State Highway Department in the Capitol Building, Harrisburg, Pa., until 10 o'clock on the morning of June 11, 1914, when bids will be publicly opened and scheduled.

SEALED PROPOSALS COMMONWEALTH OF PENNSYLVANIA State Highway Department

SEALED PROPOSALS will be received at the office of the State Highway Department in the Capitol Building, Harrisburg, Pa., until 10 o'clock on the morning of June 16, 1914, when bids will be publicly opened and scheduled.

SEALED PROPOSALS COMMONWEALTH OF PENNSYLVANIA State Highway Department

SEALED PROPOSALS will be received at the office of the State Highway Department in the Capitol Building, Harrisburg, Pa., until 10 o'clock on the morning of June 16, 1914, when bids will be publicly opened and scheduled.

SEALED PROPOSALS COMMONWEALTH OF PENNSYLVANIA State Highway Department

SEALED PROPOSALS will be received at the office of the State Highway Department in the Capitol Building, Harrisburg, Pa., until 10 o'clock on the morning of June 16, 1914, when bids will be publicly opened and scheduled.

SEALED PROPOSALS COMMONWEALTH OF PENNSYLVANIA State Highway Department

SEALED PROPOSALS will be received at the office of the State Highway Department in the Capitol Building, Harrisburg, Pa., until 10 o'clock on the morning of June 16, 1914, when bids will be publicly opened and scheduled.

SEALED PROPOSALS COMMONWEALTH OF PENNSYLVANIA State Highway Department

SEALED PROPOSALS will be received at the office of the State Highway Department in the Capitol Building, Harrisburg, Pa., until 10 o'clock on the morning of June 16, 1914, when bids will be publicly opened and scheduled.

SEALED PROPOSALS COMMONWEALTH OF PENNSYLVANIA State Highway Department

SEALED PROPOSALS will be received at the office of the State Highway Department in the Capitol Building, Harrisburg, Pa., until 10 o'clock on the morning of June 16, 1914, when bids will be publicly opened and scheduled.

SEALED PROPOSALS COMMONWEALTH OF PENNSYLVANIA State Highway Department

SEALED PROPOSALS will be received at the office of the State Highway Department in the Capitol Building, Harrisburg, Pa., until 10 o'clock on the morning of June 16, 1914, when bids will be publicly opened and scheduled.

SEALED PROPOSALS COMMONWEALTH OF PENNSYLVANIA State Highway Department

SEALED PROPOSALS will be received at the office of the State Highway Department in the Capitol Building, Harrisburg, Pa., until 10 o'clock on the morning of June 16, 1914, when bids will be publicly opened and scheduled.

SEALED PROPOSALS COMMONWEALTH OF PENNSYLVANIA State Highway Department

SEALED PROPOSALS will be received at the office of the State Highway Department in the Capitol Building, Harrisburg, Pa., until 10 o'clock on the morning of June 16, 1914, when bids will be publicly opened and scheduled.

SEALED PROPOSALS COMMONWEALTH OF PENNSYLVANIA State Highway Department

SEALED PROPOSALS will be received at the office of the State Highway Department in the Capitol Building, Harrisburg, Pa., until 10 o'clock on the morning of June 16, 1914, when bids will be publicly opened and scheduled.

SEALED PROPOSALS COMMONWEALTH OF PENNSYLVANIA State Highway Department

SEALED PROPOSALS will be received at the office of the State Highway Department in the Capitol Building, Harrisburg, Pa., until 10 o'clock on the morning of June 16, 1914, when bids will be publicly opened and scheduled.

SEALED PROPOSALS COMMONWEALTH OF PENNSYLVANIA State Highway Department

SEALED PROPOSALS will be received at the office of the State Highway Department in the Capitol Building, Harrisburg, Pa., until 10 o'clock on the morning of June 16, 1914, when bids will be publicly opened and scheduled.

SEALED PROPOSALS COMMONWEALTH OF PENNSYLVANIA State Highway Department

SEALED PROPOSALS will be received at the office of the State Highway Department in the Capitol Building, Harrisburg, Pa., until 10 o'clock on the morning of June 16, 1914, when bids will be publicly opened and scheduled.

SEALED PROPOSALS COMMONWEALTH OF PENNSYLVANIA State Highway Department

SEALED PROPOSALS will be received at the office of the State Highway Department in the Capitol Building, Harrisburg, Pa., until 10 o'clock on the morning of June 16, 1914, when bids will be publicly opened and scheduled.

which blank and envelope will be furnished upon request, marked: "PROPOSAL FOR THE RECONSTRUCTION OF ROAD IN MANSFIELD BOROUGH, TIoga COUNTY."

SEALED PROPOSALS COMMONWEALTH OF PENNSYLVANIA State Highway Department

SEALED PROPOSALS will be received at the office of the State Highway Department in the Capitol Building, Harrisburg, Pa., until 10 o'clock on the morning of June 16, 1914, when bids will be publicly opened and scheduled.

SEALED PROPOSALS COMMONWEALTH OF PENNSYLVANIA State Highway Department

SEALED PROPOSALS will be received at the office of the State Highway Department in the Capitol Building, Harrisburg, Pa., until 10 o'clock on the morning of June 16, 1914, when bids will be publicly opened and scheduled.

SEALED PROPOSALS COMMONWEALTH OF PENNSYLVANIA State Highway Department

SEALED PROPOSALS will be received at the office of the State Highway Department in the Capitol Building, Harrisburg, Pa., until 10 o'clock on the morning of June 16, 1914, when bids will be publicly opened and scheduled.

SEALED PROPOSALS COMMONWEALTH OF PENNSYLVANIA State Highway Department

SEALED PROPOSALS will be received at the office of the State Highway Department in the Capitol Building, Harrisburg, Pa., until 10 o'clock on the morning of June 16, 1914, when bids will be publicly opened and scheduled.

SEALED PROPOSALS COMMONWEALTH OF PENNSYLVANIA State Highway Department

SEALED PROPOSALS will be received at the office of the State Highway Department in the Capitol Building, Harrisburg, Pa., until 10 o'clock on the morning of June 16, 1914, when bids will be publicly opened and scheduled.

SEALED PROPOSALS COMMONWEALTH OF PENNSYLVANIA State Highway Department

SEALED PROPOSALS will be received at the office of the State Highway Department in the Capitol Building, Harrisburg, Pa., until 10 o'clock on the morning of June 16, 1914, when bids will be publicly opened and scheduled.

SEALED PROPOSALS COMMONWEALTH OF PENNSYLVANIA State Highway Department

SEALED PROPOSALS will be received at the office of the State Highway Department in the Capitol Building, Harrisburg, Pa., until 10 o'clock on the morning of June 16, 1914, when bids will be publicly opened and scheduled.

SEALED PROPOSALS COMMONWEALTH OF PENNSYLVANIA State Highway Department

SEALED PROPOSALS will be received at the office of the State Highway Department in the Capitol Building, Harrisburg, Pa., until 10 o'clock on the morning of June 16, 1914, when bids will be publicly opened and scheduled.

SEALED PROPOSALS COMMONWEALTH OF PENNSYLVANIA State Highway Department

SEALED PROPOSALS will be received at the office of the State Highway Department in the Capitol Building, Harrisburg, Pa., until 10 o'clock on the morning of June 16, 1914, when bids will be publicly opened and scheduled.

SEALED PROPOSALS COMMONWEALTH OF PENNSYLVANIA State Highway Department

SEALED PROPOSALS will be received at the office of the State Highway Department in the Capitol Building, Harrisburg, Pa., until 10 o'clock on the morning of June 16, 1914, when bids will be publicly opened and scheduled.

SEALED PROPOSALS COMMONWEALTH OF PENNSYLVANIA State Highway Department

SEALED PROPOSALS will be received at the office of the State Highway Department in the Capitol Building, Harrisburg, Pa., until 10 o'clock on the morning of June 16, 1914, when bids will be publicly opened and scheduled.

SEALED PROPOSALS COMMONWEALTH OF PENNSYLVANIA State Highway Department

SEALED PROPOSALS will be received at the office of the State Highway Department in the Capitol Building, Harrisburg, Pa., until 10 o'clock on the morning of June 16, 1914, when bids will be publicly opened and scheduled.

ment, Harrisburg; 2117 Farmers Bank Building, Harrisburg; 1001 Chestnut Street, Philadelphia; and office of District Engineer C. S. Lemon, Hollidaysburg, Pa. Each bid must be made upon a blank furnished by the State Highway Department, accompanied by a certified check in the sum of \$2,500, and enclosed in a separate sealed envelope, which blank and envelope will be furnished upon request, marked: "PROPOSAL FOR THE RECONSTRUCTION OF ROAD IN EAST TAYLOR TOWNSHIP AND EAST CONEMAUGH BOROUGH, CAMBRIA COUNTY."

SEALED PROPOSALS COMMONWEALTH OF PENNSYLVANIA State Highway Department

SEALED PROPOSALS will be received at the office of the State Highway Department in the Capitol Building, Harrisburg, Pa., until 10 o'clock on the morning of June 16, 1914, when bids will be publicly opened and scheduled.

SEALED PROPOSALS COMMONWEALTH OF PENNSYLVANIA State Highway Department

SEALED PROPOSALS will be received at the office of the State Highway Department in the Capitol Building, Harrisburg, Pa., until 10 o'clock on the morning of June 16, 1914, when bids will be publicly opened and scheduled.

SEALED PROPOSALS COMMONWEALTH OF PENNSYLVANIA State Highway Department

SEALED PROPOSALS will be received at the office of the State Highway Department in the Capitol Building, Harrisburg, Pa., until 10 o'clock on the morning of June 16, 1914, when bids will be publicly opened and scheduled.

SEALED PROPOSALS COMMONWEALTH OF PENNSYLVANIA State Highway Department

SEALED PROPOSALS will be received at the office of the State Highway Department in the Capitol Building, Harrisburg, Pa., until 10 o'clock on the morning of June 16, 1914, when bids will be publicly opened and scheduled.

SEALED PROPOSALS COMMONWEALTH OF PENNSYLVANIA State Highway Department

SEALED PROPOSALS will be received at the office of the State Highway Department in the Capitol Building, Harrisburg, Pa., until 10 o'clock on the morning of June 16, 1914, when bids will be publicly opened and scheduled.

SEALED PROPOSALS COMMONWEALTH OF PENNSYLVANIA State Highway Department

SEALED PROPOSALS will be received at the office of the State Highway Department in the Capitol Building, Harrisburg, Pa., until 10 o'clock on the morning of June 16, 1914, when bids will be publicly opened and scheduled.

SEALED PROPOSALS COMMONWEALTH OF PENNSYLVANIA State Highway Department

SEALED PROPOSALS will be received at the office of the State Highway Department in the Capitol Building, Harrisburg, Pa., until 10 o'clock on the morning of June 16, 1914, when bids will be publicly opened and scheduled.

SEALED PROPOSALS COMMONWEALTH OF PENNSYLVANIA State Highway Department

SEALED PROPOSALS will be received at the office of the State Highway Department in the Capitol Building, Harrisburg, Pa., until 10 o'clock on the morning of June 16, 1914, when bids will be publicly opened and scheduled.

SEALED PROPOSALS COMMONWEALTH OF PENNSYLVANIA State Highway Department

SEALED PROPOSALS will be received at the office of the State Highway Department in the Capitol Building, Harrisburg, Pa., until 10 o'clock on the morning of June 16, 1914, when bids will be publicly opened and scheduled.

SEALED PROPOSALS COMMONWEALTH OF PENNSYLVANIA State Highway Department

SEALED PROPOSALS will be received at the office of the State Highway Department in the Capitol Building, Harrisburg, Pa., until 10 o'clock on the morning of June 16, 1914, when bids will be publicly opened and scheduled.

SEALED PROPOSALS COMMONWEALTH OF PENNSYLVANIA State Highway Department

SEALED PROPOSALS will be received at the office of the State Highway Department in the Capitol Building, Harrisburg, Pa., until 10 o'clock on the morning of June 16, 1914, when bids will be publicly opened and scheduled.

SEALED PROPOSALS COMMONWEALTH OF PENNSYLVANIA State Highway Department

SEALED PROPOSALS will be received at the office of the State Highway Department in the Capitol Building, Harrisburg, Pa., until 10 o'clock on the morning of June 16, 1914, when bids will be publicly opened and scheduled.

nut Street, Philadelphia, Pa. Each bid must be made upon a blank furnished by the State Highway Department, accompanied by a certified check in the sum of \$4500, and enclosed in a separate sealed envelope, which blank and envelope will be furnished upon request, marked: "PROPOSAL FOR THE RECONSTRUCTION OF ROAD IN EAST BROWN TOWNSHIP, CHESTER COUNTY."

SEALED PROPOSALS COMMONWEALTH OF PENNSYLVANIA State Highway Department

SEALED PROPOSALS will be received at the office of the State Highway Department in the Capitol Building, Harrisburg, Pa., until 10 o'clock on the morning of June 16, 1914, when bids will be publicly opened and scheduled.

SEALED PROPOSALS COMMONWEALTH OF PENNSYLVANIA State Highway Department

SEALED PROPOSALS will be received at the office of the State Highway Department in the Capitol Building, Harrisburg, Pa., until 10 o'clock on the morning of June 16, 1914, when bids will be publicly opened and scheduled.

SEALED PROPOSALS COMMONWEALTH OF PENNSYLVANIA State Highway Department

SEALED PROPOSALS will be received at the office of the State Highway Department in the Capitol Building, Harrisburg, Pa., until 10 o'clock on the morning of June 16, 1914, when bids will be publicly opened and scheduled.

SEALED PROPOSALS COMMONWEALTH OF PENNSYLVANIA State Highway Department

SEALED PROPOSALS will be received at the office of the State Highway Department in the Capitol Building, Harrisburg, Pa., until 10 o'clock on the morning of June 16, 1914, when bids will be publicly opened and scheduled.

SEALED PROPOSALS COMMONWEALTH OF PENNSYLVANIA State Highway Department

SEALED PROPOSALS will be received at the office of the State Highway Department in the Capitol Building, Harrisburg, Pa., until 10 o'clock on the morning of June 16, 1914, when bids will be publicly opened and scheduled.

SEALED PROPOSALS COMMONWEALTH OF PENNSYLVANIA State Highway Department

SEALED PROPOSALS will be received at the office of the State Highway Department in the Capitol Building, Harrisburg, Pa., until 10 o'clock on the morning of June 16, 1914, when bids will be publicly opened and scheduled.

SEALED PROPOSALS COMMONWEALTH OF PENNSYLVANIA State Highway Department

SEALED PROPOSALS will be received at the office of the State Highway Department in the Capitol Building, Harrisburg, Pa., until 10 o'clock on the morning of June 16, 1914, when bids will be publicly opened and scheduled.

SEALED PROPOSALS COMMONWEALTH OF PENNSYLVANIA State Highway Department

SEALED PROPOSALS will be received at the office of the State Highway Department in the Capitol Building, Harrisburg, Pa., until 10 o'clock on the morning of June 16, 1914, when bids will be publicly opened and scheduled.

SEALED PROPOSALS COMMONWEALTH OF PENNSYLVANIA State Highway Department

SEALED PROPOSALS will be received at the office of the State Highway Department in the Capitol Building, Harrisburg, Pa., until 10 o'clock on the morning of June 16, 1914, when bids will be publicly opened and scheduled.

SEALED PROPOSALS COMMONWEALTH OF PENNSYLVANIA State Highway Department

SEALED PROPOSALS will be received at the office of the State Highway Department in the Capitol Building, Harrisburg, Pa., until 10 o'clock on the morning of June 16, 1914, when bids will be publicly opened and scheduled.

SEALED PROPOSALS COMMONWEALTH OF PENNSYLVANIA State Highway Department

SEALED PROPOSALS will be received at the office of the State Highway Department in the Capitol Building, Harrisburg, Pa., until 10 o'clock on the morning of June 16, 1914, when bids will be publicly opened and scheduled.

SEALED PROPOSALS COMMONWEALTH OF PENNSYLVANIA State Highway Department

SEALED PROPOSALS will be received at the office of the State Highway Department in the Capitol Building, Harrisburg, Pa., until 10 o'clock on the morning of June 16, 1914, when bids will be publicly opened and scheduled.

there in their proper persons at 10 o'clock in the forenoon of said day with their records, inquisitions, examinations and their own remembrances to do those things which to their office appertain to be done, and those who are bound in recognizances to prosecute against the prisoners there are or shall be in the jail of Dauphin County be then and there to prosecute against them as shall be just. Given under my hand at Harrisburg the 23 day of May, A. D. 1914, being the one hundred and thirty-eight year of Independence of the United States.

HARRY C. WELLS, Sheriff.

EXECUTOR'S NOTICE — Letter Testamentary having been granted to the undersigned upon the estate of Herman Astrich, deceased, late of the City of Harrisburg, deceased; all persons having claims against said estate will present the same, and all persons indebted to said estate will make immediate payment to me.

EMMA ASTRICH, Executrix, 500 Market Street, Harrisburg, Pa.

NOTICE NOTICE IS hereby given to the Public, generally, that my wife, Pearl Stuckey, having left my bed and board without any just and reasonable cause, I will no longer be responsible for any debts contracted by her in my name.

J. H. STUCKEY.

THE EQUITABLE Will Lend You Money To Housekeepers Workmen and Salaried Employees.

No red tape, bother or worry. You may have it to-day if you wish.

LEGAL RATES

EQUITABLE INVESTMENT COMPANY 9 N. MARKET SQUARE Room 21 4th Floor

NOTICE — Letters Testamentary on the Estate of Kate Cunkle, late of Harrisburg, Pa., Dauphin County, Pa., deceased, having been granted to the undersigned, and all persons indebted to said Estate are requested to make immediate payment, and those having claims will present them for settlement.

JAMES R. DOWNE, Executor.

Court Proclamation WHEREAS, the Hon. George Junkel, President Judge, and Hon. Samuel J. McCarrill, Additional Law Judge, of the County of Dauphin, having issued their precept, bearing date the 22 day of May, A. D. 1914, to me directed for holding Court of Oyer and Terminer and General Jail Delivery, and Quarter Sessions of the Peace of Harrisburg, Pa., of the County of Dauphin, and to commence the second Monday of June, 1914, being the 8th day of June, 1914, and to continue two weeks.

Notice is therefore hereby given to the Coroners, Justices of the Peace, Jurymen and Constables of said County of Dauphin that they may be then and

CO-OPERATIVE Loan & Investment Co. 204 Chestnut St.

OFFICE HOURS: 9 a. m. to 6 p. m. Wednesday and Saturday 8 a. m. to 9 p. m.