

Lieutenant Governor

Table with columns for Districts, McChlain, R., Powell, R., Creasy, D., Jenkins, D., Smith, W. Lists candidates for various wards and precincts.

Table with columns for Districts, Kreider, R., Kaufman, D., Prizer, D., Kreider, W. Lists candidates for various wards and precincts.

Secretary of Internal Affairs

Table with columns for Districts, Houck, R., McNaair, D., Meehling, D., Rowley, D., Lewis, W. Lists candidates for various wards and precincts.

Table with columns for Districts, Kreider, R., Kaufman, D., Prizer, D., Kreider, W. Lists candidates for various wards and precincts.

Congress

County Districts

Table with columns for Districts, Kreider, R., Kaufman, D., Prizer, D., Kreider, W. Lists candidates for various wards and precincts.

Member of State Committee

Table with columns for Districts, Kreider, R., Kaufman, D., Prizer, D., Kreider, W. Lists candidates for various wards and precincts.



J. W. SWARTZ

Nominated for Legislature by Republicans of city district.

Legislature, County

(2 to be nominated)

Table with columns for Districts, Gordon, R., Nissley, R., Young, R. Lists candidates for various wards and precincts.

Legislature, County

(2 to be nominated)

Table with columns for Districts, Gordon, R., Nissley, R., Young, R. Lists candidates for various wards and precincts.

PENROSE AND BRUMBAUGH WIN

[Continued From First Page]

Lieutenant Governor
McClain—city 3136, county 2102; total 5238.

Secretary Internal Affairs
Houck—city 2404, county 2380; total 4784.

The Appellate Courts
The county gave a magnificent vote for President Judge George Kunkel.

Supreme Court
Bonner—city 174, county 223; total 397.

Superior court
Clark—city 1471, county 1003; total 2474.

Quaker City by 82,000
Philadelphia, May 20.—Unofficial totals of the vote cast in Philadelphia yesterday were as follows:

Republican Nominations
United States Senator:
Boles Penrose, 80,799; J. Benjamin Dimmick, 10,922.

Democratic Nominations
United States Senator:
Henry Budd, 15,447.

Mayor on Committee
Mayor J. Lybarger, backed by the machine, led the legislative fight.

Mayor on Committee
Mayor J. Lybarger, backed by the machine, led the legislative fight.

Mayor on Committee
Mayor J. Lybarger, backed by the machine, led the legislative fight.

Mayor on Committee
Mayor J. Lybarger, backed by the machine, led the legislative fight.

Mayor on Committee
Mayor J. Lybarger, backed by the machine, led the legislative fight.

Mayor on Committee
Mayor J. Lybarger, backed by the machine, led the legislative fight.

Mayor on Committee
Mayor J. Lybarger, backed by the machine, led the legislative fight.

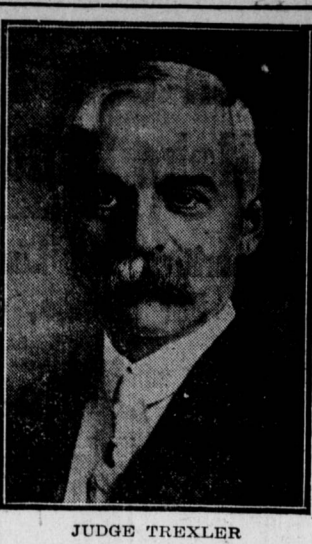
Mayor on Committee
Mayor J. Lybarger, backed by the machine, led the legislative fight.

Mayor on Committee
Mayor J. Lybarger, backed by the machine, led the legislative fight.

Mayor on Committee
Mayor J. Lybarger, backed by the machine, led the legislative fight.

Mayor on Committee
Mayor J. Lybarger, backed by the machine, led the legislative fight.

Mayor on Committee
Mayor J. Lybarger, backed by the machine, led the legislative fight.



JUDGE TREXLER

Nominated for State Superior Court.

DEMOCRATS WAR IN CITY DISTRICTS

Bitter Struggle of McCormick and Ryan Factions Reflected in Returns

MAYOR ON THE COMMITTEE

Royal of Nonpartisan Fame, Looms Up in Democratic Politics

The bitter struggle between the McCormick and Ryan factions for the city vote was reflected yesterday in the contest for the Democratic nominations for the House in the city district.

In the city district Augustus Wildman was renominated by the Republicans, receiving 2,542 votes, while J. W. Swartz, his colleague, received 2,723 votes.

The Democrats had no fight in the county district, for a wonder, H. B. Saussaman, Williamstown, and G. A. Lewis, Lebanon, being nominated.

Representatives were renominated by the Bull Mooseers, one of the objects of the party.

Mayor on Committee
Mayor J. Lybarger, backed by the machine, led the legislative fight.

Mayor on Committee
Mayor J. Lybarger, backed by the machine, led the legislative fight.

Mayor on Committee
Mayor J. Lybarger, backed by the machine, led the legislative fight.

Mayor on Committee
Mayor J. Lybarger, backed by the machine, led the legislative fight.

Mayor on Committee
Mayor J. Lybarger, backed by the machine, led the legislative fight.

Mayor on Committee
Mayor J. Lybarger, backed by the machine, led the legislative fight.

Mayor on Committee
Mayor J. Lybarger, backed by the machine, led the legislative fight.

Mayor on Committee
Mayor J. Lybarger, backed by the machine, led the legislative fight.

Mayor on Committee
Mayor J. Lybarger, backed by the machine, led the legislative fight.

Mayor on Committee
Mayor J. Lybarger, backed by the machine, led the legislative fight.

Table with columns for Districts, Kreider, R., Kaufman, D., Prizer, D., Kreider, W. Lists candidates for various wards and precincts.

Table with columns for Districts, Kreider, R., Kaufman, D., Prizer, D., Kreider, W. Lists candidates for various wards and precincts.

Table with columns for Districts, Kreider, R., Kaufman, D., Prizer, D., Kreider, W. Lists candidates for various wards and precincts.

Table with columns for Districts, Kreider, R., Kaufman, D., Prizer, D., Kreider, W. Lists candidates for various wards and precincts.

Table with columns for Districts, Kreider, R., Kaufman, D., Prizer, D., Kreider, W. Lists candidates for various wards and precincts.