



World's Greatest Automobile Value

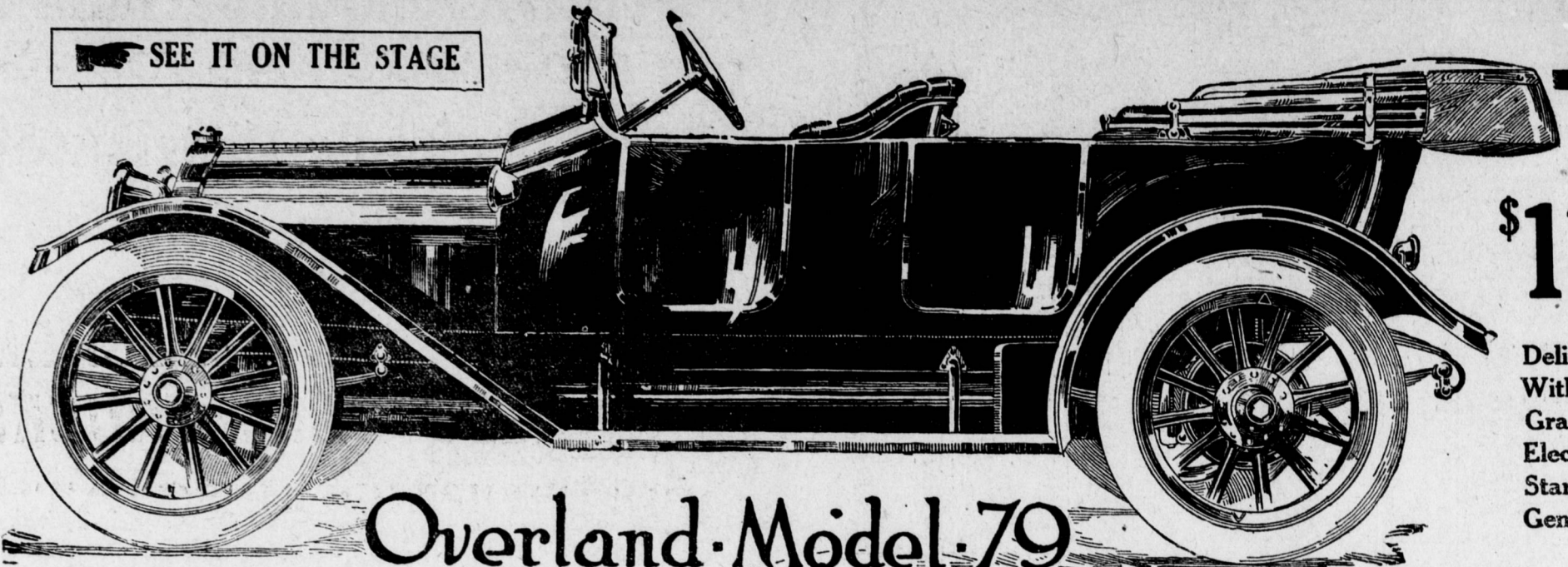
Center of Attraction at the Show



SEE IT ON THE STAGE

\$985

Delivered To You Fully Equipped



\$1110

Delivered With Gray & Davis Electric Starter and Generator

Overland Model 79

YOU will want to see the car made in the largest factory in the world. You want to see the largest car for the least money in the world. The car that 40 skilled German engineers tore apart piece by piece to find a weak spot, and didn't discover anything which bore even the resemblance of a flaw. This car is the OVERLAND---the car that is being exhibited on the stage. The greatest family car, regardless of price, made on the Earth to-day.

OVERLAND Delivery Car

A rugged little car that will stand continued service. Built on the regular standard Overland chassis. Body designs to suit various purposes. 35 horsepower. Capacity 1,000 pounds.

WILLYS Utility Truck

Capacity, 1,500 to 2,000 pounds. Particularly constructed for truck work. Made by the Willys-Overland Company. Bodies in Various Designs.

The AUTOCAR

One and one-half-ton Commercial Delivery for merchants in every line of business. Used by leading establishments throughout the world.

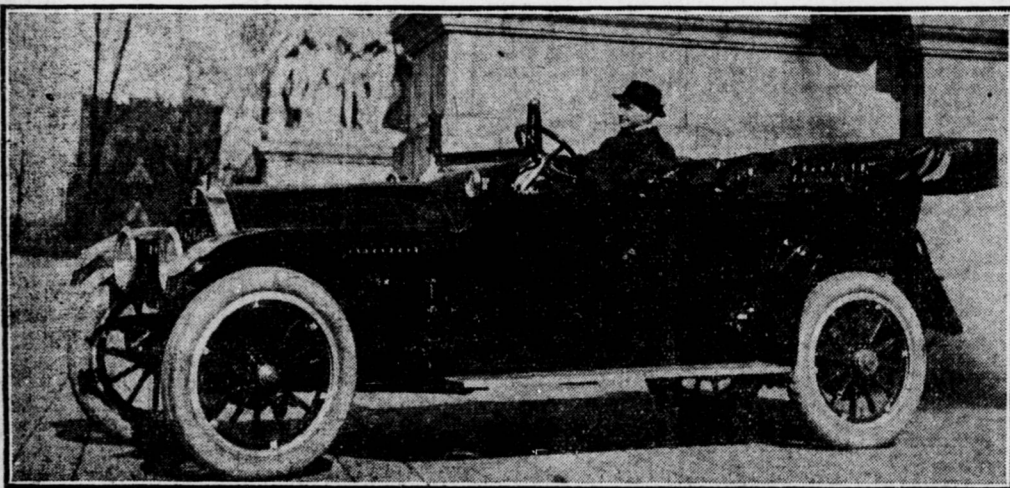
GARFORD TRUCKS

Two to Six-ton capacity with tractors up to twelve tons. Constructed especially for heavy duty work. Made ten years by one of the strongest companies, financially.

ANDREW REDMOND, 3rd and Boyd Sts., HARRISBURG, PENNA.

Distributor For Dauphin, Perry and Cumberland Counties

COLE CAR AMONG NEW ONES HERE



The Bowman & Co. exhibit at the show is among the most interesting of the many, largely because it is a newcomer at local shows. However, the Cole is among the best-known cars nationally, having been used as pathfinder and survey car on transcontinental highway work. The Cole car is advertised extensively as the standardized car. The Cole policy is to buy what is considered the best parts that go to make up a car. In this way the car is built with axle, transmission, bearings and other mechanical fittings of standard construction, and such as have a reputation in the automobile world as being among the best obtainable. The Bowman & Co. exhibit consists of a Cole "four," a Cole "six" and a Cole stripped chassis that shows the mechanical construction. W. H. Nicolai, shown in above picture, is in charge of the automobile department of Bowman & Co., and in charge of the exhibit at the local show.

Seen and Overheard at Harrisburg Auto Show

The Simplex shock absorbers are shown in the booth of the Eureka Wagon Works. An ordinary automobile spring is fitted with one of the Simplex absorbers and a long bar attached to the upper part. As the bar is moved it shows the action of the Simplex. Although of lighter construction than regular equipment, the parts are built in perfect proportion, so as to give a practical demonstration of its method of operation. D. M. Cresswell, representing A. H. Bailey, of the Eureka Wagon Works, reports a great number of these devices placed on Harrisburg cars.

The Oakland Motor Car Company is showing one of the most novel cars which has been brought out in many years. The car is designated as a Cabriolet, and it is a distinct innovation. And, unlike most of the novelties presented, this car is thoroughly practical, and is sure to meet with favor.

The word Cabriolet means a "diminutive cab," but it is more than that, for it is at once a closed body along the lines of a coupe, and an open body with the convenience of a roadster, when the weather permits. It will accommodate two passengers, and it should be specially appropriate for winter use, for as a closed car it will offer complete protection from the cold, and on the warmer days, when an ordinary closed body would be close and stuffy, it may be thrown entirely open and used as a roadster.

A most ingenious method of construction makes possible the Cabriolet's wide range of usefulness. The top tilts back into small compass at the rear; the side windows are hinged and fold down and inward against the doors, while the side panel windows drop down into the walls of the car.

"There is every reason to believe that 1914 will be the greatest year in the history of motorcycling," declares H. Z. Ross, in charge of the West End Electric and Cycle Company's exhibit, local representatives for the Indian. "Millions want to motor, but the majority cannot afford even cheap automobiles, and to this class the motorcycle is the key to the pleasures of all outdoors at a cost within their means."

"The 1913 output was nearly 75,000 machines, or over 50 per cent, more than were built in 1912. This year will see a production of over 100,000 motorcycles, of which 60,000 will be built by the Hendee Manufacturing Company, makers of the Indian. There is no question but that the market will absorb this output, for in the past the manufacturers never have been able to fully supply the demand."

"In commercial pursuits the motorcycle is meeting certain requirements more efficiently than the automobile. Therefore, the popularity of the motorcycle is founded on its efficiency in business as well as its low cost for pleasure. The year just closed marked a tremendous growth in motorcycling as compared with previous years."

Three Hendee Specials have been sold at the show.

In explaining the electric gear shift of the Haynes models, George G. McFarland said: "Those buttons numbered 1, 2 and 3 control the three speeds forward, low, intermediate and high. The reverse button is marked 'R,' neutral 'N,' while starter and the horn are marked 'S' and 'H,' respectively."

The push button switch is arranged

with a mechanical interlock so that one button only may remain in position at a time. These buttons control the operation of a set of electro-magnets, or solenoids, as they are more commonly called in this connection. There is one solenoid for each speed forward, and one for reverse. To the clutch pedal is connected a mechanical neutral device and a small mechanical master switch which completes the circuit to the battery for energizing the solenoids or electro-magnets.

"Now when you select the desired speed through the switch on the steering wheel, you push the clutch pedal down all the way, releasing the clutch and drawing the gears from their previous position to neutral, engaging the mechanical master switch that closes the electric circuit to the storage battery. This energizes the solenoid selected by the push button and draws the gears into position instantly with a pull of 150 pounds, a much stronger pull than when a driver throws the gears by hand. Meanwhile you engage the clutch in the ordinary manner by the pedal. When you want another speed, you make the shift instantly and re-engage the clutch in the usual way."

L. G. Monn, in charge of the Metz

exhibit, reports the sale of a Metz with regular equipment.

The 1914 Metz "22" is equipped with electric starter, electric search, side dash and tail lights, electric horn, and is driven by a four-cylinder 22-horsepower water-cooled motor. It has Bosch magneto, artillery wheels and Goodrich tires. All equipment is standard. The car can be purchased without the electrical equipment, all other equipment being identically the same. The Metz car can be driven 28 to 32 miles one gallon of gasoline, while one pint of lubricating oil will suffice for 100 miles. From 10,000 to 12,000 miles can be made on a single set of tires.

Some of the claims for the Metz "22" are that it is the most compactly built car in the world; the most economical car to operate; a really practical car and one that can be enjoyed by its owner because it does not eat its head off in the use of gasoline, oil, repair and tire bills.

The Morton Tractor looks up like an elephant among the other racy-looking pleasure cars. Its huge proportions suggest power, and that's what it is designed for and not intended for the racetrack at Indianapolis. This four-wheel-drive tractor

is mounted and connected by electric motor in order to display its mechanical workings to the best advantage. The Morton Tractor has worm-drive interchangeable axles, and pivot joints, so that no matter how rough the ground over which it travels, it will not strain the large frame or disturb the balance. The power plant is a 30-hp four-cylinder, four-cycle engine.

Walter S. Morton, C. R. Morton and S. F. Dunkel are in charge of the exhibit, and the New York representative, E. B. van Atta, is a visitor. H. W. Henderson, salesmanager for the Crown Motor Car Company, of Louisville, Ky., is stopping at the Metropolitan Hotel this week. Mr. Henderson is placing agents for the Crown roadster and touring car. The Crown roadster has a wheelbase of 96 inches, weighs 1,040 pounds, with tires 28x3 inches. Wire or wood wheels optional. Motor 2-13.16x4 inches; 18 to 20 horsepower. The Crown touring car has a 114-inch wheelbase; four-passenger completely equipped with top, windshield and presto tank. Simplicity of construction, the car has only ninety parts. Friction drive makes it possible to go one to forty miles per hour. This touring car is equipped with top, windshield and presto-lite tank and sells at \$475.

Abbott Branch Has Placed One Hundred Cars

Since opening their own Branch House in Harrisburg last December, the Abbott Motor Car Company have enjoyed a healthy growing trade. They have placed a number of agencies in surrounding counties and have already handled through the branch over one hundred cars.

The new six-cylinder model has proven a strong favorite in the family, on account of its remarkable performing ability. The four-cylinder models are still quite popular as is shown by the number of sales being made each week.

The mechanical perfection of the entire Abbott Line has made it a universal favorite and the management is proud of the fact that each Abbott owner is an enthusiastic booster.

It was an owner of an Abbott Car that christened it the "Bull Dog Line," after driving one for over 50,000 miles from Alaska to Mexico in all kinds of weather, winter and summer, and finishing the trip in perfect condition. He stated it was a "Bull Dog" on account of its great power and endurance, and that slogan was adopted by the company and has been used ever since.

A full line is now on exhibition at the Automobile Show. Persons interested in automobiles should not fail to visit this exhibit. No car exhibited at the New York Show was more admired, drew larger crowds or held greater interest for visitors than the "Bull Dog Line."

After Visiting the Auto Show VISIT US

See Our Stock and Get Our Prices on

Automobile and Motorcycle Tires

Guaranteed Automobile Casings

28x3	\$9.60	33x4	\$20.70
30x3	\$10.30	34x4	\$21.40
30x3½	\$13.80	35x4	\$22.00
32x3½	\$14.70	36x4	\$22.80
34x3½	\$15.60	36x4½	\$30.70

All kinds of accessories carried in stock

E. MATHER CO. 204 WALNUT ST.

HIPPMOBILE

The Car of the American family

Neighbors Motor Co. of Cleveland, Ohio

Retail and Wholesale Distributors
HARRISBURG BRANCH, 120 Market St., (Senate Hotel Block) H. C. Emerick and T. B. Wildermuth in charge. Bell Phone 2471

