

AT THE HARRISBURG AUTO SHOW

IF YOU WANT STRENGTH, COMBINED WITH LIGHT WEIGHT, LIGHT RUNNING QUALITIES AND LOW UP-KEEP, SPEED AND POWER WITHOUT FRICTION, COMFORT, CONVENIENCE AND SAFETY, YOU WANT

# Jeffery

The Jeffery Four - - - \$1550

An absolutely new car—so modern and so superior that it can rub shoulders with the best cars the world produces—and profit by comparison.

A strictly high-grade car, built in accordance with the latest European and American practice, but sold at an extremely low figure—\$1550.

In the Jeffery Four you get light weight and light running qualities without sacrificing comfort. That means less fuel consumption—less vibration—less repairs—less tire expense—and real pleasure for the owner.

Every improvement of tested worth is incorporated in the Jeffery of Fur. To see it is to want it—to own it is to realize the true pleasure of a perfect car.

The Jeffery Six - - - \$2250

has all the best features of all the best cars. Built for the man who demands Jeffery quality in a six.

## West End Garage

1808 Logan Street,

LOCAL AGENCY

Harrisburg, Pa.

### Prosperous Business

#### Outlook For Miller Tires

Returning from an extended business tour of the South, sales manager, F. C. Millhoff, of the Miller Rubber Co., Akron, Ohio, reports that very optimistic conditions prevail in the automobile field.

While Mr. Millhoff has made many new connections enroute through Savannah, Jacksonville, Atlanta, and as far down as Tampa, Fla. "The same expectant spirit prevailed even to the western point, Little Rock, Ark., and it is interesting to note the lack of the usual hard times evidenced more or less in the north during the winter—1914 will show the biggest year

in the history of our business in the south," says Mr. Millhoff. The Miller tire is well known in that section of the country, and while business conditions indicate such extensive use of tires for the large number of cars that are continually being sent to the South, the new distributing station just appointed by the Miller man will relieve the already congested branch at Atlanta.

Established in Business in 1881

AT 310 STRAWBERRY AVE.

Still Doing Business at the Same Old Stand

# Automobile Painting

## A Specialty

Done By Automobile Painters

The only dust-proof varnish rooms in the city. Our prices are not the lowest, but neither are they expensive for good work. Don't lose sight of that 33 years' experience, not only in automobile and carriage work but house painting as well.

We guarantee our work if you take our advice as to how it should be done.

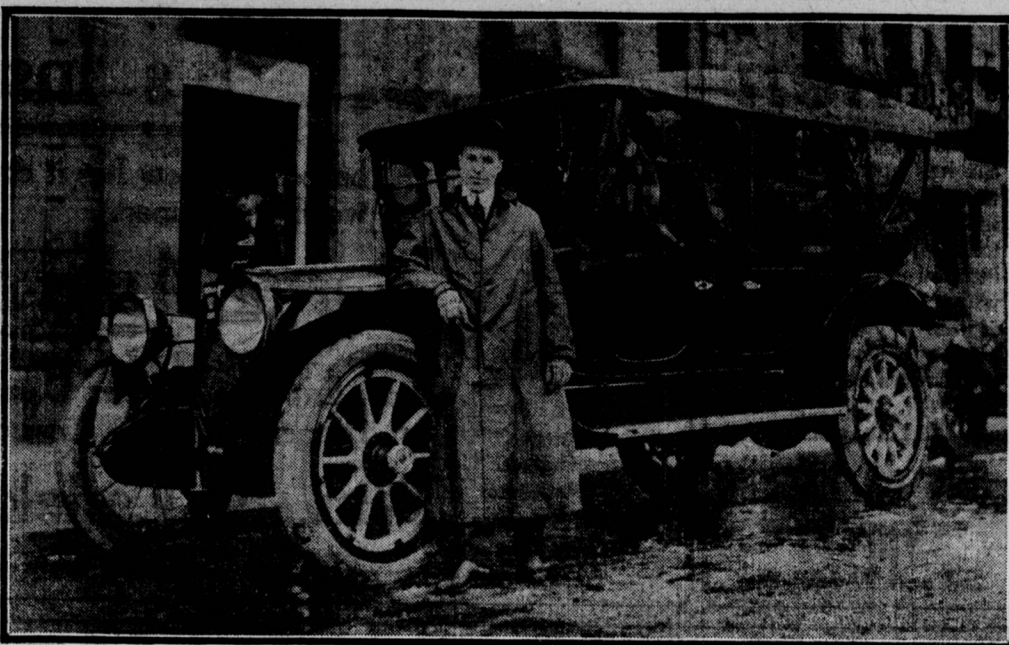
WE DON'T KNOW HOW TO DO A CHEAP JOB

Gohl and Bruaw,

310 STRAWBERRY AVE.

Both Phones Or Box 266

### THE PACKARD IN STORMY WEATHER



The above picture shows the Packard equipped with the one man top and side curtains opening and closing with the doors. This converts the car into closed carriage for winter purposes. B. Boyd Harrington, in picture, is the manager in charge of the local branch at 107 Market street.

### ELECTRIC AUTOS GAIN POPULARITY

#### Comfort, Convenience and Luxury Combined in Noiselessly Running Car

The electric automobile is one of the ideal society cars and is rapidly coming into its own in all American cities. The design and furnishings of the modern electric put in a class of luxurious comfort almost by itself, as there is nothing spared to make it the most comfortable conveyance extant.

The materials are strictly of the best and strongest for many reasons. First, they are better and more durable, and second they have to be of get strength required in the lightest possible form.

The machinery of the electric is the simplest possible combination of essentials only. The chassis is made of the required frame supported in axles and wheels by springs, and having a platform for the storage battery, motor and body. The battery is securely placed on its platform and has no movable part to adjust or bother with during operation, and only the caps of the jars are removable to fill them with water when necessary.

The motor is hung in its cradle and its motor is the only moving part in the entire power plant and its motion is entirely rotary, not reciprocating, and moves therefore without the slightest noise, jar or vibration.

The power plant has two roller or ball bearings, one at each end of the motor shaft, that takes all the wear of the entire plant, and their bearings last for years in practice.

There are absolutely no high speed vibrating, noisy, wearing, small parts in the electric automobile. Let us compare a four-cylinder gas engine running at 1,200 revolutions per minute and our electric motor running at the same and the usual speed.

The pistons of the engine make 9,600 oscillations per minute, dragging 16 packing rings in a rubbing contact over 768,000 square inches, or 445 square feet of metal surface. Think of the lubrication necessary and the power lost at this point alone.

No Friction. In addition to this enormous source of friction, loss of power and consumption of lubricating material must be added the wearing friction and lubrication of the many accompanying stems, and actuating levers, and all moving reciprocally in the manner to create the great possible jar and vibration.

Compared with this the electric motor has only one heavy armature or rotor, operating through two ball or roller bearings. There is absolutely no friction of any parts except four carbon brushes on the commutator, the friction of which is practically negligible on account of the materials used, carbon against copper. To prove the friction and wear from this contact is almost nothing is the fact that the great majority of electric motor commutators run under these conditions for months without wearing enough to warrant even the renewal of the carbon brushes.

The operation and control of this power plant is as simple as the plant itself. There are no adjustments to the battery, no gears to shift, no sparks to play with or gases to combine or explode. Complete control consists of simply letting the desired amount of electricity flow from the battery through the motor, and is done by the movement of one single lever, forward to go forward, and back to stop.

The steering is done by another lever or wheel as desired and speeds are controlled by the usual pedal or electric brakes, or a combination of both.

The Cleanest Machine. This simplicity, combined with the advances made in the manufacture of the latest types of storage batteries, some of which are guaranteed for four years' service without restrictions as to number of charges or mileage used, others guaranteed for 8,000 to 10,000 miles with reasonable charges for the renewal of worn-out elements and any of them when properly proportioned to the car they propel capable of going from 50 to 75 miles on a single charge of battery over the roads in and about Worcester, makes the Electric automobile a wonderfully efficient and reliable machine for all purposes within its sphere of usefulness.

The electric automobile is one of the cleanest machines to operate and care for and most of those owned in Worcester are kept in private garages at or near the home. Many are charged and operated by the women of the household.

### OAKLAND MODELS INCLUDE LIGHT SIX

#### Known By Its V-Shaped Radiator, This Car Is a Familiar Type on Highways

The Oakland Motor Company which maintains a Philadelphia factory branch at 227 North Broad street, Philadelphia, will have one of the most interesting exhibits in the automobile show during the coming week, March 14 to 21.

The exhibit includes most of their leading attractive 1914 models, all of which show a distinct advance over their last year's line, and entitle them to a position in the first rank of automobiles to be seen this year.

The improvements are more in the line of refinements, showing careful attention given to details, equipment and everything that adds to convenience in driving an automobile. They are luxurious in appearance and give every evidence of comfort.

They call particular attention to their new Light Six, 5-passenger touring car, which is an addition to the line this year. They claim that it is sold at a price which revolutionizes all the distinctive lines of the Oakland cars, which are distinguished by a German silver V-shaped radiator. It has long graceful curves from the sloping radiator to the bell-shaped back, the radiator particularly emphasizing the top streamline effect.

The wheelbase is 123 1/2 inches, motor 3 1/2 x 5, cylinders cast in one housing, the Stromberg carburetor is used, than which there is none better. The frame is pressed steel, single drop and the springs, front elliptic and the back 3/4 elliptic—35x4 1/2 inch tires used. The upholstery is 10 inches deep. The body is all steel and the door hinges are concealed. The large 1 1/2 inch electric headlights, with parabolic reflectors and two electric side and tail lights give the car a lighting equipment which is unsurpassed. One of the new features is the Noil tire pump which is under the hood and operated from the motor.

The other models this company produces are: The 6-52 five or seven passenger touring car; the 6-48 Light Six, equipped with the two-passenger roadster body or the two-passenger speedster body, and also as stated above the regular five-passenger touring car. They have continued the 43 into this season, this car was one of the big sellers of last season, and was known as a Model 42. For their small cars

### PARTIN-PALMER AT UNIVERSAL GARAGE

#### Demonstration of Car Well Known Throughout West Expected Within a Week or Two

The Universal Garage at 1826 Wood street has assumed the agency for the Partin-Palmer cars. This garage is under the management of C. H. Mauk, and S. H. Daddow, of St. Clair, Pa., was in Harrisburg yesterday to close negotiations.

The Partin-Palmer "38" is the product of the Partin Manufacturing Company, of Chicago, Ill., a concern which results from the consolidation of the Partin Manufacturing Company, of Chicago, and the Palmer Motor Car Company, of Detroit, Mich. The officials are men who have helped to solve some of the big problems of the industry and who understand thoroughly the fundamental principles which determine the success of a car. The factory, located in Detroit, is splendidly equipped and well able to meet the steady increasing demand for this new product.

To the man who understands automobile construction, the Partin-Palmer "38" is an interesting study. The power plant is the famous Mason Motor, one of the most efficient and highest priced on the market, designed by A. C. Mason, of Flint, Mich., who designed the Buick Motor. His twenty years of practical experience in designing motors for gasoline pressure cars, his experiments in the gas engine field, combined with his knowledge of present day demands, have all contributed their share toward helping him to design a motor which represents his masterpiece.

The motor is of the overhead valve type, with cylinders cast in bloc, and develops full 38-horsepower. It possesses all the advantages of the overhead type and its improved construction eliminates all disadvantages such as leaky cages, valve troubles and excessive noise. Mr. Mason's idea of removing entirely the valve cages has proven practical and satisfactory.

The Partin-Palmer "38" is a six-passenger car, roomy, comfortable and powerful, with 15-inch wheel base. It contains the accepted features which have played a prominent part in the progress of the industry and in connection many exclusive and original ideas. After a careful inspection of the Partin-Palmer "38" it becomes evident that it represents a marked advance in modern motor car building.

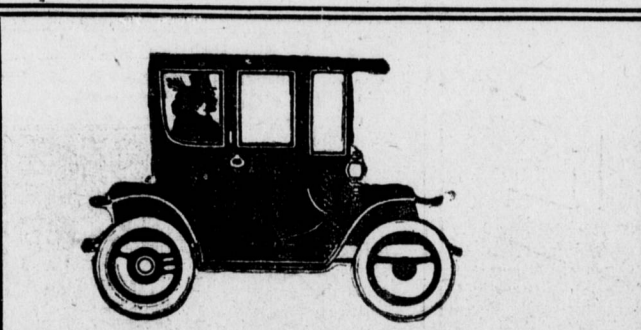
The Philadelphia territory, in fact Eastern Pennsylvania, Southern New Jersey, Delaware and Maryland, will be handled by the Colonial Motor Car Company, 330 North Broad street, of which L. E. French, a man well known in the local automobile industry, is president.

Mr. French in a recent trip West realized at a glance the excellent value offered in the Partin-Palmer "38" and knowing the big demand in the Eastern territory for such a car, wasted no time in completing his arrangements to handle it. The Partin-Palmer "38" will occupy Booth 44 at the local automobile show this coming week.

They have the Model 36, four cylinder machine, either in the three-passenger sociable or five-passenger touring car. This car has been brought out also as a cabriolet, which is a convertible car for summer or winter, as the top folds back into small compass at the rear, and the side windows also the door windows slide into the body which makes a very compact machine for the business man or professional man.

The Oakland branch of Philadelphia is in charge of Ted Johnston, who is known for maintaining an especially fine service station, both at Philadelphia and throughout the adjacent territory.

ECONOMY OF FUEL. It is not the amount of gasoline that determines the amount of power to be derived from a given sized cylinder. It is the amount that can be changed into a vapor and be mixed with air to a proper degree before ignition. In winter much gasoline is wasted by being carried as liquid into the cylinders. Such material burns very slowly compared to the proper mixture, and leaves much of the carbon deposited in the combustion chambers. This is not economy.



The Fashion's Decree—  
**Electric**

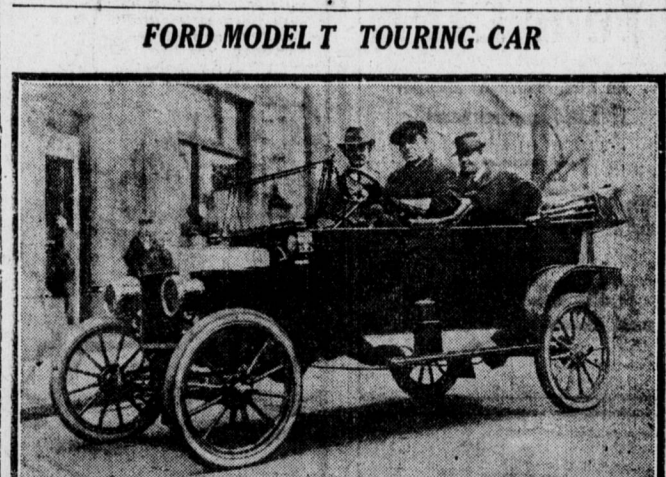
RECENTLY an Electric carrying four passengers, ran from Los Angeles to San Diego in 13 hours—140 miles of rough, hilly country.

In Boston, an Electric was driven to North Attleboro and back, then for 18 miles through the city — going up Beacon Hill after traveling 91 miles. The first 75 miles of the total of 95.5 miles were made at a speed of 21.5 miles per hour.

An Electric Roadster went from New York to Boston — a 251 mile run — in 12 hours and 15 minutes — and the travel was over hilly country with many muddy detours.

Such unusual performances are proof positive that the Electric of to-day has speed and mileage enough for any city or suburban service — AT THE LOWEST COST FOR UPKEEP.

Harrisburg Light & Power Co.



FORD MODEL T TOURING CAR

The Ford car, of which there are more on the highways of the world than any other car, is represented in Harrisburg by the Ford Sales Company at Tenth and Market streets. The model T touring car and roadster will be on display at local show. In the above picture are F. Driscoll and M. L. Mumma, owners of the local agency, and W. H. Driscoll, salesman, and son of the manager.

Grand Prize Race, February 28th, 1914

Out of twenty cars entered, equipped with eight makes of tires; seven entries, or 35 per cent, were shod with

**MILLER TIRES**

CHOICE OF SPEED KINGS—SAFE FOR YOU.

STERLING AUTO TIRE CO. 1451 Zarker St.

REAL, GUARANTEED TIRE REPAIR WORK.

5th ANNUAL

# Auto Show

March 14-21 Inclusive

ARENA--REX GARAGE, Harrisburg, Pa.

North Third and Delaware Sts.