

Overland Model 79

In a few weeks the Blue Birds will sing and the Spring Buds will be on the trees and everybody will want an Automobile, then the good cars will be hard to get.

Place Your Order Now and Take Your

# OVERLAND

as soon as you can get it. There is not such a value in any Automobile on the American market as found in the Overland—114 wheelbase, 4-inch tires, floating rear axle, Timkin rolling bearings, electric lights, \$50 speedometer, clear vision ventilating windshield, deep cushions, mohair top with top cover, robe rail, foot rest.

## 35 Horse Power Motor Cylinder

Cylinders cast separate, with 5-bearing crank shaft and natural cooling. Delivered in Harrisburg for

### \$985.00

And With Gray and Davis Electric Self-Starter, \$1,110.00

Compare these specifications with any other automobile and you'll cash the Overland. Roadsters, Touring Car and Delivery all the same price. Send for catalogue.

## Andrew Redmond

Third and Boyd Sts.

HARRISBURG, PA.

Distributor for Dauphin, Perry and Cumberland Counties.

## That 1912

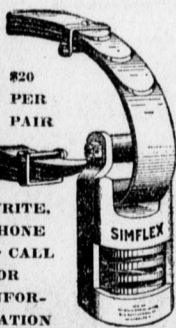


### "The Car That Put the Start in Starter"

- By the way, those are good cars yet.
- Every man who ever owned one has the highest regard for them. The Electric lights and starter is very satisfactory. More so than many now used on other cars.
- These cars have been sold practically as fast as they were traded in. We have made several more trades, which will give us some additional Cadillacs of this model.
- You cannot get equal value in any new car at the price. And remember they are Cadillacs. Have Cadillac features. Have the Cadillac guarantee, and entitle to the benefits of the New Cadillac Service House.
- See us early and get the pick of these cars.

## Crispen Motor Car Co.

413-417 S. Cameron St.



### SIMFLEX

#### Shock Absorber For Automobiles

Here at last is a low-priced shock absorber that can be depended upon to do the work. The SIMFLEX has been proven the simplest and most efficient shock absorber in the market. Absorbs both vibration and shock. No wearing part to get out of order. Friction parts case hardened. A dependable shock absorber is a necessity in the preservation of your car. SIMFLEX is dependable. Half to one-third the cost of others. Let us give you a 30-day free trial of the SIMFLEX. Money back if not satisfied. Price, \$20.00 per pair put on.

Eureka Wagon Works, Agts.,

A. H. BAILEY, Bell Phone 1340J. 614-18 North St.

### AUTO PAINTING

Wagon and Auto Delivery Body Building Repair Works a Specialty

During the next month or so your automobile will be almost idle. Save that month's storage bill, and more, by having us paint and varnish it to look like new.

Get in before the rush starts. Satisfaction guaranteed.

## Eureka Wagon Works

A. H. Bailey, Bell phone 1340J. 614-18 North St.

## MILLER NON-SKID TIRES

Grip the Road Like a Cog-Wheel STERLING AUTO TIRE CO. 1451 Zarker St.

## VULCANIZING

## NEW JEFFERY CAR AT W. E. GARAGE

J. A. Bentz and Charles Beshore Join C. H. Conrad in Sale of Well Known Car

The Jeffery Four is an absolutely new car, modern and so handsome in appearance that it commands admiration whenever the graceful outline of the car is to be seen. Associated with C. H. Conrad this year in the selling of the Jeffery are A. J. Bentz and Charles Beshore, two well-known local men. The agency will remain at the West End Garage at 1808 Logan street.

The Jeffery car is backed by one of the strongest companies in the country, the Thomas B. Jeffery Company with forty years manufacturing experience and five and one-half million dollars in assets. The Jeffery motor is among the greatest high speed light motors in the country. The Jeffery engineers took to pieces every successful motor in Europe and America before deciding upon the present high speed monobloc design. From all these they took the best features combined them with their own ideas and the result is a remarkable motor, powerful, light and economical.

This high speed monobloc motor is compact and modern. It develops 2,200 revolutions per minute, forty horsepower. The cylinders are 3 1/4-inch diameter and 4 1/2-inch stroke. The motor is one remarkable solid casting, together with the valve sets and water jackets. This makes it strong, rigid, vibration and easy to cool. It can travel forty miles per hour on second speed and you will be surprised how smoothly it runs. The power of this motor cannot be figured on paper from the diameter of the cylinder or the length of the piston stroke. It takes motor speed to make power and, when delivered to the wheels through mechanism which is almost entirely free from friction, the result is wonderful.

The Jeffery Four has a electric starting and lighting system, said to be the most expensive made and promoted by exclusive agents. The Jeffery Four can be provided with five different body styles. The standard five-passenger touring car for \$1,550, including complete equipment. The Jeffery Six is the newest model and comes in a five-passenger touring car at \$2,250, a six-passenger touring car at \$2,300, a two-passenger roadster at \$2,250, a five-passenger sedan inside drive at \$2,500 and a five-passenger limousine at \$3,700. The closed style bodies of the Six, as in the Jeffery Four are so fitted that touring or roadster bodies can be substituted as the season demands.

### Reo Motor Truck Ousts The Old Army Mule

The quartermaster's department of the State of Michigan has definitely discarded mule-drawn vehicles in favor of those motor driven. In the event of the mobilization of the troops, the State for war or for any other purpose, the vast amount of hauling made necessary would be done with gasoline instead of with horses.

Colonel Walter G. Rogers, the quartermaster-general, has been using a Reo motor truck since its purchase for his department June 1. The truck has proved itself at Lansing, at the Calumet strike duty camp, and on the State military reserve at Grayling.

It is a two-ton vehicle which does the work on an average of four times more than that, hardly ever less. The daily cost of operation, figuring depreciation, tires, repairs, gasoline, driver, interest on the investment and all other possible costs is \$3.70. Four teams with wagons and drivers, cost \$20 per day, to hire, not to own. The proprietary cost, when feeding the horses is considered, is much higher.

There are some steep hills about Calumet and Houghton, but the truck hauled tentage and supplies from one end of the district to the other day after day without faltering. At Grayling, it was used for weeks hauling brick and lumber and other building material over soft, sandy roads. It has hauled a letter from the quartermaster's department of Michigan in purchasing a Reo truck for its quartermaster's department is ahead of many other States, and of the army as well. Though the army has a few trucks which are used in cities where there is good pavement, it still sticks to the mule for the long, serious hauling over broken country.

The Michigan truck is now in daily use in Lansing, and has, it is estimated, saved at least half its original purchase price—\$1,800—in draying since June 1.

### PORTER BUILDING BURNED

By Associated Press

Philadelphia, Feb. 14.—One of the buildings of the C. B. Porter Company, manufacturer of linware, located near the Delaware river front, was destroyed by fire to-day. The loss is estimated at \$60,000. About two weeks ago two other buildings of the Porter plant were damaged by fire to the extent of about \$75,000.

### Reo Truck

1 1/2 to 2 Ton

New Price (Chassis)

\$1650

Loading Space 10 to 12 Feet

Reo-Mack-

Chase Truck

Reo-Stevens-Duryes

Pleasure Cars

Harrisburg

Auto Co.

Third and Hamilton Street

### MID-WINTER PRICES

—ON—

### Used Automobiles

Here's a tip for you, Mr. Wide-awake. Do you know that real money held under a dealer's nose these dull winter days will buy more automobile value than can be had when the Spring sun begins to peep through the clouds. We have a number of used cars that we will let go at interesting figures.

CRISPEN MOTOR CAR CO.

413-417 S. CAMERON ST.

### Auto Storage

REPAIRS AND SUPPLIES

PAUL D. MESSNER

Agent for Stanley Steamer Cars

Rear of 1117 NORTH THIRD

## AUTOMOBILE PLANTS HEADED OUR WAY

So Predicts A. I. Philp, Sales Manager of the Studebaker Plants

That the Spring and summer months of the present season will see a competition of famine conditions in the supply of new motor cars is definitely predicted by A. I. Philp, Sales Manager of the Studebaker Plants, who has just returned from a trip of observation in the West. Mr. Philp's observation is also supplemented by the reports of Studebaker representatives in other parts of the country and in the foreign field.

The Studebaker arrangement with dealers on a definite schedule of deliveries for the entire year. This schedule consists of carload lots, so arranged that as soon as possible may be combined into trainloads each of which will go direct from the load-platform in Detroit to a certain territory. This schedule is then passed along for guidance of the production department.

"I do not recall a winter in recent years which has so tested the elasticity of our deliverers," Mr. Philp declares. "Energetic dealers who know by experience how to estimate their local conditions have been urging increased shipments and have been begging us to advance their deliveries to include in February orders which were for delivery as far ahead as April and May."

The comparatively open winter has undoubtedly influenced this unusual demand to some extent. The fact that all our cars are fitted with a built-in electric starting and lighting system which makes cold weather motoring easy and feasible is another consideration. But the demand springs from a source much deeper than immediate sales and is based on the fact that these dealers that the winter purchasing is only an indication of what will happen when the sun gets to shining on the streets.

### Hudson Six Holds Record of Farthest North in America

Alexander Powell and party, representing Sunset Magazine, have returned to California after their trip through British Columbia to Alaska. Mr. Powell made this trip in the interests of Sunset Magazine and in connection with the Pacific coast. Both he and Mr. Kuhn, his traveling companion, returned ardent admirers and great boosters of the Hudson car. The car went back to California under its own power in practically as good condition as when it left San Francisco with the exception of a scratched body, bent fenders and other ordinary road wear. Mr. Powell said he liked the car well that he had had it repainted and slightly repaired where necessary and is keeping it for his own personal use.

The gentleman who went along as Mr. Powell's guest is a retired capitalist of San Jose, Calif. who has always been a strong booster for another car of which he has owned several. Since his return, however, he has been thoroughly converted to the six-cylinder idea and one of the first things he did upon reaching his home was to place his order for a Hudson Six 54.

Mr. Powell is the well-known travel writer who was in Africa with Roosevelt. He has added to his experience by this trip in an automobile from the British Columbia coast to the southern boundary of Alaska near Hazelton. His account of this trip will be brought out in a forthcoming book, but will appear first serially in the magazine.

From Mr. Powell read as follows: "Here we are almost at the end of our journey to the nearer north, 250 miles from the nearest railway and far beyond the end of the Caribou Trail, where civilization quits work and the wilderness begins. I have seen bad roads in Quebec and in Virginia, in East Africa and in Honduras and in the mountains of the West. I have carried a little American flag on the bonnet and at all the construction camps and towns through which we passed we received most hospitable receptions."

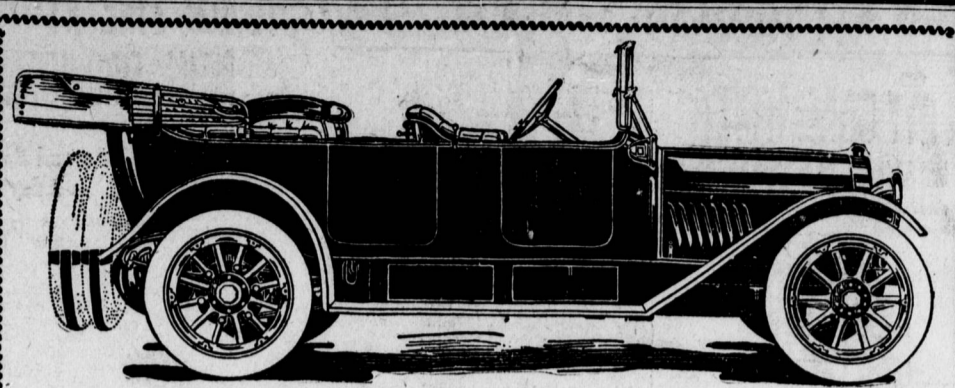
### Colossal Growth of the Motorcycle Trade

"Very few people outside the industry have an accurate conception of the colossal growth of the motorcycle trade in the past few years, or of its potential possibilities of development," points out the West End Electric & Cycle Co. "The extraordinary production of automobiles has had a tendency to distract the public from the great strides being made by the motorcycle, but nevertheless it is one of the most prosperous and stable industries in the country."

"Since the motorcycle projected itself on the public eye through its struggle for recognition, it has remained in the spotlight, and won devotees by the thousands because of the many advantages it possesses both for business and pleasure pursuits. The 1913 output was 75,000 machines, while for 1914, material contracts placed indicate a total output of at least 110,000, which will be built by twenty concerns."

"It is interesting to note that just as a well-known car has maintained production leadership for several years, the condition prevails in the motorcycle field, where for fourteen consecutive years, or since the birth of the industry in this country, the Indian has been the most popular machine. In 1913 the Indians on 'the Road' is not a mere advertising slogan, but a statement of fact, proven by statistics. For instance, 29 per cent of the 1913 output were Indians, while 1912 saw 37 per cent. Of all the motorcycles built bearing the Indian name. In 1913 the 35,000 Indians manufactured constituted 41 per cent of the total volume, and the 1914 schedule of 60,000 Indians will represent 50 per cent of the total output."

"As that inexorable business law, 'the survival of the fittest' applies to motorcycle manufacture equally strong, it must be admitted that this sustained supremacy has been possible only by the maintenance of leadership in mechanical development, sales methods and service to the owner. The values offered each year in the new Indian models have appealed so strongly to motorcyclists as to completely absorb the total output and in fact overtax the capacity of the factory. On the other hand, this widespread appreciation of the Indian features has made it possible for the manufacturers to offer to riders each succeeding year such attractive models as to practically submerge competition."



## Some Food For Thought

- Do you know of a motor the equal of the GENUINE CONTINENTAL?
- Do you know of a transmission superior to the WARNER?
- Do you know of universal joints better than SPICER?
- Do you know of any bearings that will even compare with TIMKEN?

## Don't, Do You?

WELL all these STERLING features are embodied in the ABBOTT CARS, and MANY more besides, to say nothing of the refinements that go to make up the PERFECT Car.

If you are TRULY interested in getting REAL car value, be sure to examine the "BULL DOG LINE," IT'S THE LINE. NOT MADE TO UNDERSELL, BUT MADE TO EXCEL. Let us prove it.

We have both four and six cylinder models, and each model has built in it, SATISFACTION.

DO NOT FORGET this is a DIRECT FACTORY BRANCH. Our service department will doctor your sick car. Give it a trial. Free air for inflating your tires in front of our salesroom.

### HARRISBURG BRANCH

## Abbott Motor Car Co.

106-108 S. 2d St. Harrisburg, Pa. BELL PHONE 3593.

## HIGH COST OF LIVING AND REASONS WHY

### Improper Cultivation of Farm Lands and Unused Acreage Chief Factor in Cost

BY S. S. MORTON, Mechanical Expert, Morton Motor Truck Co.

"Having spent all my life in connection with modern farm machinery, in upward of a dozen foreign countries, and places me in a position to discern the difference between the old and new method of farming. I am amused at the ideas advanced by the lecturer and writers on the subject according to my way of thinking they fail to set forth up-to-date ideas in order to produce sufficient products of the farm land to reduce the high cost of living. For after all the only solution for this high cost of living is to obtain greater results from the cultivation of the soil. Owing to the increased population it is necessary to take proper steps to produce more of the grain which will encourage and induce the young man and woman to stay on the farm and accomplish more and better results by way of food products with less expense and by the elimination of hard manual labor for the ease and comfort of sitting upon a cushioned seat, controlling the machinery by levers, ranking in the class with the luxury of the automobile.

"It is an undeniable fact that the horse is an expensive quantity owing to the fact that he must be kept the year around for about four months' work and eats too much of the grain and hay which should be used to feed meat and wool producing animals and fowl.

"The writer is prepared to explain the plan in detail and demonstrate in part that the work can be done by power, without any consumption of the grain supply, which method will accomplish the results at a reduction of 50 per cent. A detailed description of the cost and plan of operation of raising and handling the products will be furnished on request.

"It is an interesting fact to note the effort made to reduce the light cost of living by removing the tariff on certain articles inviting the foreign trade which takes our gold for every bushel of grain which comes to this country when in fact America should be producing the supply by cultivating the countless acres unused and use many which are poorly farmed.

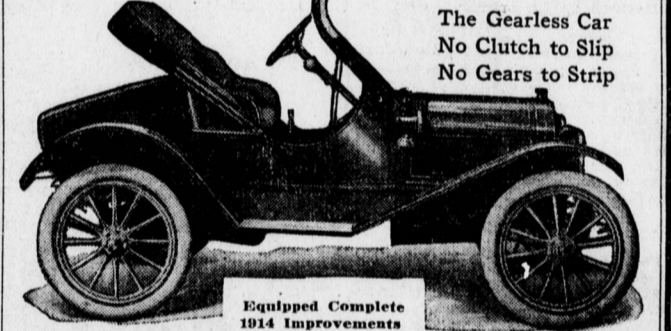
"In my opinion there is no justifiable reason why this country cannot with this modern farm equipment produce results equal to the cost of foreign grain after the transportation has been paid."

### Improvements Almost Complete at Abbott Co.

Alterations are practically completed at the local factory branch of the Abbott Motor Car Company and a decided improvement is noticeable even to a casual observer passing by in South Second street. The new paper is on, the painting is now being finished, after which the season's newest models will be displayed to better advantage than heretofore. New catalogs are in process of printing and C. D. Stewart, eastern representative, with headquarters in this city, is making every possible arrangement for an aggressive campaign in behalf of the new Abbott-Detroit models.

## AS A HILL CLIMBER

the METZ "22" has no superior. It will climb hills as fast as any car made, regardless of its price. The METZ engine develops more than one horsepower per 50 pounds of weight, hence its great reserve power.



## METZ "22" \$475

WINNER OF THE GLIDDEN TOUR  
A remarkable example of low price and minimum cost of upkeep combined with the essential features of the strictly up-to-date car. A thoroughly practical car. The ON-Y car in the Glidden Tour that held a PERFECT SCORE for the entire eight days of the race. All and investigate, or Phone or Write for Catalog

MONN BROS.  
17th and Swatara Streets, Harrisburg

## CHALMERS

- "Thirty-six" (4 and 5-passenger) \$1,775
- "Six" (6-passenger) \$2,275
- "Six" (2 and 4-passenger) \$2,175

## STUDEBAKER

- 4-Cylinder, five-passenger \$1050
- 6-Cylinder, seven-passenger \$1575

FULLY EQUIPPED  
KEYSTONE MOTOR CAR CO.  
1019-25 Market Street

## Try Telegraph Want Ads