

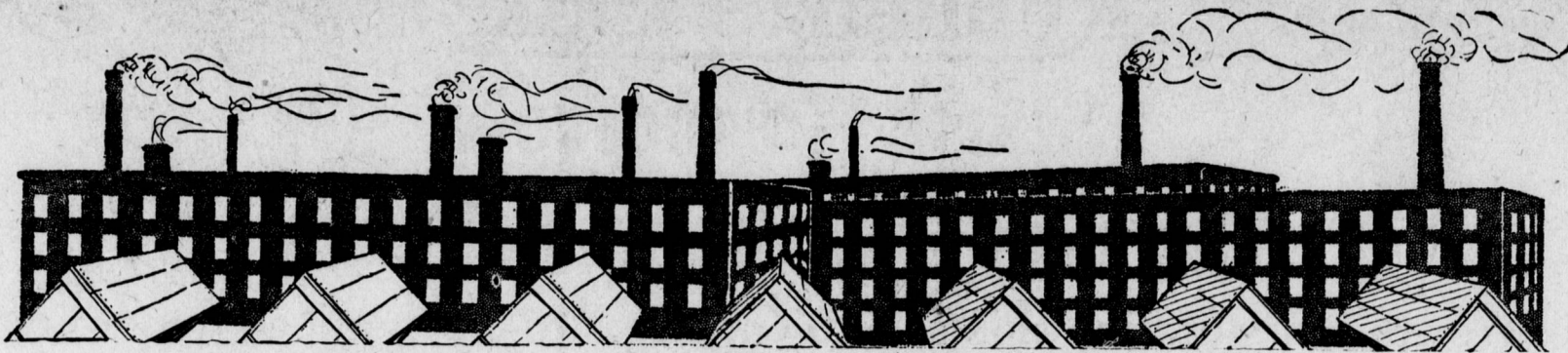
The Dives, Pomeroy & Stewart Mill and Factory Sale Opens To-morrow

Boys' Fine Dress Hats Reduced

\$1.98 French Felt Hats, black, navy, greys and browns. Mill and Factory Sale price, **\$1.23**

\$1.98 Chinchilla Hats, silk edged brims, browns, greys and navy. Mill and Factory Sale price, **\$1.23**

Dives, Pomeroy & Stewart, Second Floor, Front—3 Elevators



Laces and Embroideries

Laces	Mill and Factory Sale Price
English Torchon Laces, 1 to 1 1/2 inches wide, values up to 3c, yard,	1c
German Torchon Laces, 2 to 3 inches wide, values up to 5c, yard,	3c
Embroideries	Mill and Factory Sale Price
Cambric Corset Cover Embroidery, 17 inches wide, neat patterns, values up to 15c, yard,	10c
Cambric Embroidery Flouncing, 17 inches wide, values up to 15c, yard,	10c
Cambric Embroidery Edgings and Insertions in a large range of patterns, values up to 10c, yard,	5c

Messaline Petticoats \$2.95

Messaline petticoats, pleated flounce, American Beauty, mahogany, Nell Rose, changeable effects and black; \$3.50 values. Mill and Factory Sale price, **\$2.95**

Messaline petticoats, pleated flounce; mahogany, navy, Nell Rose, emerald, changeable effects and black. Mill and Factory Sale price, **\$3.95**

Satine petticoats, pleated flounce; Copenhagen, King's blue, emerald, American Beauty and mahogany. Mill and Factory Sale price, **50c**

Blue and grey striped gingham petticoats, tailored flounce. Mill and Factory Sale price, **50c**

Dives, Pomeroy & Stewart, Second Floor—Three Elevators.

Colored and Black Dress Fabrics

Colored Dress Goods

59c and 75c Ashland Broadcloth, 800 yards, 54 inches wide, in shades of navy, Myrtle and mixed blue. Mill and Factory Sale price, **25c**

50c Granite Cloth, 36 inches wide, in a good range of Spring colors. Mill and Factory Sale price, **39c**

50c Shepherd Checks, in plain and fancy colorings, 36 inches wide. Mill and Factory Sale price, **39c**

50c Serge, 36 inches wide, navy and brown. Mill and Factory Sale price, **39c**

75c Shepherd Checks, 42 inches wide, three sizes. Mill and Factory Sale price, **49c**

75c French Henrietta, 42 inches, all wool in a range of tan shades. Mill and Factory Sale price, **55c**

85c Serge, 48 inches wide, all wool, in shades of navy and brown. Mill and Factory Sale price, **59c**

\$1.00 Canton Crepe, 42 inches wide, imported fabric, in all the new shades for Spring. Mill and Factory Sale price, **75c**

\$1.00 Pebble Ratine, 42 inches; one of the new fabrics. Mill and Factory Sale price, **75c**

\$1.25 Serge, 54 inches wide, all wool, in navy. Mill and Factory Sale price, **89c**

\$1.50 to \$3.00 Wool Ratine, 50 and 54 inches wide, all wool, shades navy, cadet and brown. Mill and Factory Sale price, **95c**

\$1.75 Diagonal Suiting, all wool, 54 inches wide, in blue. Mill and Factory Sale price, **95c**

\$2.00 and \$3.00 Mixed Suitings, 54 inches wide, in good styles and colorings. Mill and Factory Sale price, **\$1.49**

\$2.00 Broadcloth, 54 inches wide, in good shades. Mill and Factory Sale price, **\$1.49**

Silk and Wool Fabrics

\$1.00 Silk Poplin, 40 inches, in new Spring shades. Mill and Factory Sale price, **89c**

\$1.50 Priestley's Seintilla, 42 inches wide, in all the new shades. Mill and Factory Sale price, **\$1.25**

\$2.50 Broadcloth, 42 inches wide, in shades of navy, bronze, tan, ivory, light blue, cadet and taupe. Mill and Factory Sale price, **\$1.95**

Black Dress Goods

Imported Belgium Broadcloth, permanent satin finish, chifton weight:

\$2.00 quality, 50 inches, **\$1.49**

\$2.50 quality, 54 inches, **\$1.95**

\$3.00 quality, 54 inches, **\$2.49**

\$4.00 quality, 54 inches, **\$2.95**

50c Serges, 36 inches, **39c**

50c Black Granite Cloth, 36 inches, **39c**

75c Black Imported Suiting, **49c**

85c Black Serge, 48 inches, **59c**

\$1.00 Black Serges, 50 inches, **69c**

\$1.25 Black Serges, 52 inches, **79c**

\$1.00 Black Pebble Ratine, **75c**

\$1.00 Black Wool Taffeta, **75c**

\$1.75 Black Diagonal, 56 inches, **\$1.39**

\$3.00 Black Embroidered Voile, **\$1.49**

Linings

1,000 Yards Cambric Muslin, 6 1/4 c Quality, 3c in all shades of grey, tans, brown, blue, etc.; lengths 2 to 5 yards.

25c Satine, 36 Inches Wide, 15c Our usual 25c quality; lengths, 1 to 5 yards.

Table Linen and Napkins

Dependable qualities of inexpensive Table Linen and Napkins are among the many attractions offered by the Linen Section in the Mill and Factory Sale.

Mill and Factory Sale Price

25c Bleached Cotton Table Damask, 58 inches wide, dice patterns, yard,

50c Fine Mercerized Table Damask; new patterns, yard,

50c Old Fashioned German Homespun Table Linen, 58 inches wide, dice patterns, yard,

79c Full Bleached Linen Damask, 70 inches wide, yard,

Fine \$1.00 Bleached Table Linen, 72 inches wide, beautiful patterns, yard,

\$1.25 Heavy Snow White Table Damask, two yards wide, fine quality and new patterns, yard,

\$2.00 Pattern Table Cloths, 66x66 inches, hemmed ready for use,

Mill and Factory Sale Price

\$1.69 Luncheon Cloths, 40 and 45 inches square, all linen, good patterns, slightly imperfect,

\$2.00 to \$2.50 Luncheon Cloths, fine linen damask, good designs, 45 and 54 inches square,

ALL SIZES NAPKINS

20x20 inches, dozen,

Bleached Mercerized Cotton Napkins, hemmed ready for use, size 20x20 inches, worth \$1.00 a dozen, each,

Hemstitched Linen Luncheon Napkins, 15x15 inches, beautiful patterns, worth \$2.50, per dozen,

Heavy Linen Damask Napkins, regular dinner size 24x24 inches, worth \$4.50 per dozen,

Dives, Pomeroy & Stewart, Street Floor, Rear.

Thousands of Towels

Good, dependable kinds of inexpensive towels in the Mill and Factory Sale.

Face Towels--Bath Towels

10c Red Border Cotton Huck Towels, good size and quality, each, **5c**

12 1/2c Red Border Huck Towels, good quality for general use, each, **25c**

Fine Grade of Cotton Huck Towels, sizes 18x36 inches, red border, dozen, **\$1.10**

6c Brown Twill Cotton Toweling, good quality, yard, **5c**

Fine Grade Huck Towels, good quality for general use, **\$1.39**

15c Turkish Bath Towels, good size, each, **12/2c**

All Linen Huck Towels, red, blue and white borders, dozen, **\$1.65**

11c Bleached Turkish Bath Towels, large size, hemmed, 3 for **25c**

19c White and Colored Border Bath Towels, good size, each, **15c**

25c Bleached Turkish Bath Towels, large size, hemmed ready for use, each, **19c**

Individual or Guest size Turkish Bath Towels, colored borders, blue, green, pink, lavender and white, each, **17c**

Dives, Pomeroy & Stewart, Street Floor, Rear.

\$17.00 Steamer Trunks In the Mill and Factory Sale \$10

\$17.00 featherweight steamer trunks. Mill and Factory Sale price, **\$10.00**

DRESS TRUNKS

Fiber covered trunks, strong and durable—

\$18.00 trunks, now **\$14.98**

\$15.00 trunks, now **\$12.50**

\$13.00 trunks, now **\$10.00**

\$18.00 trunks, now **\$14.98**

\$22.00 trunks, now **\$16.98**

\$20.00 duck covered trunks, **\$12.98**

\$17.00 trunks, now **\$13.98**

Dives, Pomeroy & Stewart, Basement.

New Shipment Spring Silks in This Sale

Mill and Factory Sale Price

\$1.75 and \$2.00 Evening Silks, such as crepe de chine and crepons; beautiful brocade effects; full 40 inches wide; the best value ever offered, **89c**

\$4.50 Matelasse Suitings, in the best colors of taupe, brown and wistaria; the handsomest silk woven, 44 inches wide, **\$1.79**

85c Spot Proof or Shower Proof Foulards; all new, beautiful flower designs, foulard, **69c**

59c Crepe de Chine, in ten good colors; this is a real bargain; all silk, 24 inches wide, **38c**

\$1.25 and \$1.50 Brocade Satins; 36 inches wide; in street colors; nothing makes a more stylish dress than these fabrics. Special, **80c**

The best \$1.25 Printed Foulard ever shown; full 40 inches wide; 15 of the best patterns, excellent value, **98c**

\$1.75 Crepe de Chine; 40 inches wide; all the wanted shades, **\$1.49**

Mill and Factory Sale Price

\$2.00 Crepe Meteors; 40 inches wide; in the best shades, **\$1.85**

\$2.00 Crepe de Chine; the weightiest crepe de chine made for the money, **\$1.74**

\$1.69 Plisse Crepe, a crinkle crepe; 40 inches wide; in a good color range, **\$1.19**

\$1.25 Crepe de Chine; the heavy Canton weave; 40 inches wide. Special, **\$1.00**

75c Wash Silk; 10 different stripes; 30 inches wide, **63c**

Chinese Shantung; our \$1.00 quality for this sale will sell at **69c**

75c quality. Special at **49c**

BLACK SILKS AT SPECIAL PRICES

\$1.00 Messaline, 36-inch weave, **89c**

89c Messaline, 36 inches wide, **79c**

85c Cheney Foulard in plain black; 24 inches wide, **59c**

\$1.25 Satin Majestic; 42 inches wide, **98c**

Pillow Cases, Sheets, Muslins

These are the values that bring out the housewives who appreciate real money-saving opportunities.

Mill and Factory Sale Price

16c 42x36 Bleached Pillow Cases, **14c**

20c 45x36 Bleached Pillow Cases, **16c**

Mill and Factory Sale Price

25c 50x36 Bleached Pillow Cases, **20c**

59c 81x90 Bleached Sheets, **50c**

59c 76x90 Bleached Sheets, **49c**

Large Shipment Rubber Mats

Mill and Factory Sale Price

\$18.00 Mats, 3.5x7.3 feet, **\$13.50**

\$15.00 Mats, 2.11x7.6 feet, **\$12.00**

\$15.00 Mats, 2.7x8.2 feet, **\$12.00**

\$12.00 Mats, 2.8x8 feet, **\$9.00**

\$11.00 Mats, 3.2x4.8 feet, **\$8.00**

\$8.75 Mats, 2.6x4 feet, **\$6.00**

Mill and Factory Sale Price

\$7.50 Mats, 2.3x3.11 feet, **\$5.50**

\$7.00 Mats, 2x4 feet, **\$5.00**

\$7.50 Mats, 3.3x2.11 feet, **\$5.50**

\$7.00 Mats, 3x3 feet, **\$5.00**

\$6.00 Mats, 2.6x3.2 feet, **\$4.50**

\$6.00 Mats, 2.8x3 feet, **\$4.50**

Men's \$15.00 and \$18.00 Winter Suits Offered at

The Good reputation of this store has been acquired largely by the Good Values always found here. Therefore a reduction of our prices indicate exceptional value. You will profit by a perusal of all money-saving opportunities given below.



\$10

Blue diagonal worsted suits, 3-button sack coat, fancy serge lined, high cut vest, all wool, regular \$15.00 values, **\$10.00**

White chalk striped grey and black worsted suits, two and three-button sack coats, serge lined, high cut vest, hand-tailored, all wool; regular \$18.00 value, at **\$10.00**

Shadow striped grey worsted suits, three-button sack coats, fancy serge lined; regular \$15.00 value, at **\$10.00**

\$18 and \$20 Suits \$12.50

Plain grey oxford suits, silk lined three-button sack coats, stouts and regulars; regular \$18.00 value at **\$12.50**

Fancy and plain grey worsted and cassimere suits, regulars and stouts, English and conservative models, hand-tailored, all wool, regular \$18.00 value at **\$12.50**

Grey and brown diagonal cassimere suits, two and three button sack coats, English or conservative models; regular \$20 value, **\$12.50**

Men's Overcoats Reduced

If your Overcoat will just about do for the rest of the season, buy now and be prepared for next Fall and Winter. Far sighted men will see the advantage to be derived from an investment of this nature. The models now offered include styles and fabrics endorsed as "correct" by the most tasteful dressers.

Men's Overcoats Reduced to \$12 and \$15

Blue grey heavy worsted and cheviot and navy blue chinchilla overcoats, quarter Venetian lined or full lined; belted and plain backs; notch, convertible collars, single or double-breasted, patch and regular pockets; **\$12.00**

Blue chinchilla, brown hard finished worsted, cheviot, camel's hair, beaver, Melton and fancy Vicuna overcoats, in brown, grey, blue and fancy styles; single and double-breasted, shawl and convertible collars, quarter and full lined; regular and patch pockets, belt and box backs; **\$15.00**

Dives, Pomeroy & Stewart, Second Floor, Rear—Three Elevators.



Neckwear, Dress and Work Shirts, Handkerchiefs

Mill and Factory Sale Price

25c Silk Club String Ties, black and colors, **10c**

Boys' 10c Suspenders, **5c**

Men's 15c Police Suspenders, **10c**

25c and 35c Silk Four-hand Ties, plain and fancy colors, **12/2c**

50c Tubular Silk Reversible Four-hand Ties, **15c**

Men's 50c "White" Fine Lisle Web Suspenders, limit 3 pairs to a customer, **29c**

Men's 12 1/2c Lisle Web Garters, **8c**

Men's 25c Pad Garters, **15c**

Coat Sweaters

Men's \$1.98 and \$2.50 Coat Sweaters, V-neck and roll collars, **\$1.50**

Men's \$2.98 Coat Sweaters, Boys' and Girls' \$1.50 Coat Sweaters, plain navy, and cardinal, Norfolk style or plain with roll collars, 6 to 14 years, **95c**

Mill and Factory Sale Price

Men's \$1.00 V-neck Coat Sweaters, **59c**

Infants' \$1.00 All Wool Sweater Coats, plain and fancy weaves, 1 to 4 years, **59c**

Boys' and Girls' Plain Grey Sweater Coats, with V-necks, 6 to 14 years, **59c**

50c Fine Silk Four-hand Ties, flowing end styles, **35c**

25c Silk Shield and Band Ties, **10c**

50c Negligee Percale Coat Shirts, band neck and laundered cuffs, sizes 14 to 17, **35c**

50c Blue Chambray Shirts, with two separate collars, Light and Dark Blue Chambray Shirts, collar attached, double sewn, pearl buttons, pocket, sizes 14 to 17, **35c**

Heavy Khaki Cloth Shirts, collar attached, sizes 14 to 17, Boys' 35c and 50c Negligee Percale Shirts, band style and laundered cuffs, **18c**

Mill and Factory Sale Price

Men's Negligee Shirts

Men's \$1.50 and \$2.00 Madras and Percale Negligee Shirts, sizes 13 1/2 to 17 1/2, **95c**

Men's \$1.00 Woven Madras Fine Percale Shirts, fast colors, and full sizes, hand-made cuffs, sizes 13 1/2 to 17, **69c**

Men's 50c Muslin and Cambric Night Shirts, V-necks, plain white or with neat braid trimming, **35c**

Boys' 50c Muslin and Flannelette Night Shirts, 8 to 16 years, **25c**

Men's 75c Heavy Flannelette Night Shirts, neat patterns, full sizes, sizes 14 to 20, **50c**

Men's \$1.00 Flannelette Night Shirts, braided and frog trimmed, sizes 15 to 20, **79c**

Men's \$1.00 Light and Medium Cambric and Muslin Pajamas, white or trimmed with blue, grey, pink and heilo, all sizes, **79c**

Women's, Misses' and Children's Outergarments at Prices Showing the Biggest Reductions of the Year

Children's \$2.98 Rain coats and Capes **\$2.50** Women's \$1.25 House Dresses **\$1.00**

Our entire stock of outergarments is marked to prices that show big savings in all classes of Winter garments.

Women's \$5.95 tan raincoats in sizes 42 and 44. Mill and Factory Sale price, **\$1.98**

Women's \$6.50 grey raincoats, in size 40. Mill and Factory Sale price, **\$1.98**

Women's \$5.95 navy blue raincoats; size 40. Mill and Factory Sale price, **\$1.98**

Women's House Dresses Reduced

\$1.25 double service house dresses. Mill and Factory Sale price, **\$1.00**

\$1.50 double service house dresses. Mill and Factory Sale price, **\$1.25**

Women's and Misses' Winter Coats

Mill and Factory Sale Price

Misses' \$12.50 and \$9.50 Red Sport Coats, **\$8.50**

\$9.50 Dark Blue Sport Coats in size 14, **\$6.50**

\$12.50 Green Sport Coats, with large buttons forming trimming, **\$5.50**

\$12.50 Copenhagen Zibeline Sport Coats, lined throughout with silk, **\$5.00**

\$12.50 Brown Mixed Coats, panel back, with button trimming and round collars; sizes 14, 16 and 36, **\$7.30**

\$16.50 Brown and Black Two-tone Coats, lined throughout with satin, frog fastening; buttons close to neck, **\$10.00**

\$20.00 Navy and Black Broadcloth Coats in three-quarter length; velvet collar and revers; lined throughout with satin, **\$12.50**

Mill and Factory Sale Price

\$20.00 Full Length Astrachan Coats in brown and taupe; lined throughout with Skinner's satin; large shawl collar, frog fastening, **\$15.00**

\$25.00 Eponge Coats in navy, taupe, Copenhagen, black, mahogany and brown, yoke front and back, drop shoulder; panel back; plush collar, **\$15.00**

\$20.00 Salt's Astrachan Coats in black, brown and taupe; Skinner's satin lining; plush collar and cuffs; frog fastening, **\$15.00**

\$25.00 Blue Striped Novelty Weave Brown and Navy Coats, with patch pockets and deep cuffs, tailored model, **\$16.50**

Mill and Factory Sale Price

\$22.50 Black Arabian Lamb Coats, shawl collar, seven-eighth length, frog fastening, **\$16.50**

Evening Coats and Wraps Reduced

\$35.00 and \$37.50 Brocade Velvet Coats, in blue and garnet; lined throughout with silk and trimmed with fur collar and cuffs, **\$18.50**

\$30.00 Mole Cloth, in a late style with elephant sleeves; lined with Skinner's satin, **\$15.00**

\$39.50 Hunter's Green Crushed Velvet Coat, with elephant sleeves, **\$18.50**

\$55.00 American Beauty Brocade Velvet Coat, with squirrel collar and cuffs, **\$18.50**

Additional Mill & Factory Sale News on Page 8