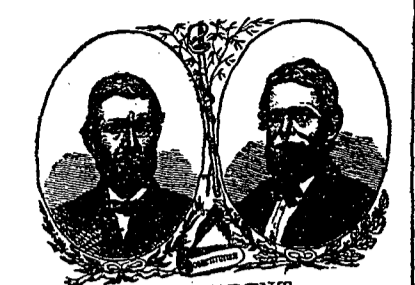


THE NATIONAL. FRIDAY MORNING, SEP. 11, '68. NATIONAL TICKET.



FOR PRESIDENT, GEN. U. S. GRANT, OF MISSOURI. FOR VICE-PRESIDENT, SCHUYLER COLFAX, OF INDIANA.

STATE TICKET. AUDITOR GENERAL, GEN. J. F. HARTBRANT, OF MONTGOMERY COUNTY. SURVEYOR GENERAL, GEN. J. M. CAMPBELL, OF CAMBRIA COUNTY.

CONGRESS. HON. WM. H. ARMSTRONG, OF LYCOMING COUNTY. FOR ASSEMBLY, COL. THEODORE GREGG, OF BELLEFONTE.

FOR DISTRICT ATTORNEY, THAD. P. STEPHENS, OF BELLEFONTE. FOR COMMISSIONER, JAMES C. WILLIAMS, OF PHILIPSBURG. FOR AUDITOR, JOHN H. MITCHELL, OF HARRISBURG.

FOR COUNTY SURVEYOR, HENRY P. TROCIZYLNKY, OF MILESBURG. EXECUTIVE COMMITTEE. The following named gentlemen constitute the Executive Committee of Centre county for the ensuing year.

FOR THE CAMPAIGN. Republicans of Centre county, it is our intention to make the BELLEFONTE NATIONAL a first-class Republican paper. We most respectfully invite all to aid us in our effort.

DEMOCRAT. In the county of the same club rates, payable when GRANT and COLFAX are elected. As many of the honest Democrats receive but little information as to the true state of the country, here is an opportunity to obtain information cheap, and also for nothing in case SEYMOUR and BLAIR are elected.

MR. MACKAY was formerly an old line Whig, and many of our readers will doubtless remember him as one of the sturdiest speakers of that party in the campaigns of '48 and '52.

These political doctors seem to differ in their opinion of L. A. Mackey. The Watchman declaring that he acted with the abolitionists up to the election of 1864.

That Mr. Mackey was an old line Whig, both the Watchman and the Reporter agree; but they differ widely in regard to the time he left that party.

On Thursday last week, the conference chosen by the Democracy of this, the 18th District, met in convention and by acclamation placed in nomination for Congress, L. A. Mackey, Esq., of Lock Haven.

Now, he either does not know that record, or his brain was very seriously muddled when he made the speech. The record of the Democratic party is the very essence of meanness and treachery.

CONGRESS.—D. G. Bush, Esq., was not nominated for Congress because he was about half-a-way Democrat during the rebellion and would not endorse Mackey's course. He did it by voting for you last fall Gray, you should forgive his loyalty during the war.

L. A. MACKAY. In the Watchman of September 4th, the editor, speaking of Mr. Mackey, says, "unlike his opponent, pompous, stuck up, labor despising."

These political doctors seem to differ in their opinion of L. A. Mackey. The Watchman declaring that he acted with the abolitionists up to the election of 1864.

That Mr. Mackey was an old line Whig, both the Watchman and the Reporter agree; but they differ widely in regard to the time he left that party.

On Thursday last week, the conference chosen by the Democracy of this, the 18th District, met in convention and by acclamation placed in nomination for Congress, L. A. Mackey, Esq., of Lock Haven.

Now, he either does not know that record, or his brain was very seriously muddled when he made the speech. The record of the Democratic party is the very essence of meanness and treachery.

CONGRESS.—D. G. Bush, Esq., was not nominated for Congress because he was about half-a-way Democrat during the rebellion and would not endorse Mackey's course. He did it by voting for you last fall Gray, you should forgive his loyalty during the war.

CONGRESS.—D. G. Bush, Esq., was not nominated for Congress because he was about half-a-way Democrat during the rebellion and would not endorse Mackey's course. He did it by voting for you last fall Gray, you should forgive his loyalty during the war.

Then butcher GRANT will have all the peace that an old sinner like him can enjoy.—Watchman.

The little rebel of the Watchman will never forgive GRANT for whipping his favorite, Gen. Lee, and compelling him to surrender.

The soldiers of the rebel army were all gentlemen, Gray's "Southern brethren," and Gen's Lee, Forrest, Johnson, Wade Hampton, Beauregard, Capt. Wise, John C. Breckinridge, Jeff. Davis, and J. Wilkes Booth, were all Christians, high-toned chivalric heroes, good Democrats;

REBEL PROSCRIPTION. The New-Oxford Times applauds the stand of Capt. Leathers of the steambot Quittman in giving notice that no person can be employed on that boat who does not vote the Rebel Democratic ticket.

REBEL PROSCRIPTION. The New-Oxford Times applauds the stand of Capt. Leathers of the steambot Quittman in giving notice that no person can be employed on that boat who does not vote the Rebel Democratic ticket.

REBEL PROSCRIPTION. The New-Oxford Times applauds the stand of Capt. Leathers of the steambot Quittman in giving notice that no person can be employed on that boat who does not vote the Rebel Democratic ticket.

REBEL PROSCRIPTION. The New-Oxford Times applauds the stand of Capt. Leathers of the steambot Quittman in giving notice that no person can be employed on that boat who does not vote the Rebel Democratic ticket.

TO THE REPUBLICANS OF PENNSYLVANIA. Boons of the Republican State Convention, Philadelphia, Aug. 18, '68.

TO THE REPUBLICANS OF PENNSYLVANIA. Boons of the Republican State Convention, Philadelphia, Aug. 18, '68.

TO THE REPUBLICANS OF PENNSYLVANIA. Boons of the Republican State Convention, Philadelphia, Aug. 18, '68.

TO THE REPUBLICANS OF PENNSYLVANIA. Boons of the Republican State Convention, Philadelphia, Aug. 18, '68.

TO THE REPUBLICANS OF PENNSYLVANIA. Boons of the Republican State Convention, Philadelphia, Aug. 18, '68.

TO THE REPUBLICANS OF PENNSYLVANIA. Boons of the Republican State Convention, Philadelphia, Aug. 18, '68.

TO THE REPUBLICANS OF PENNSYLVANIA. Boons of the Republican State Convention, Philadelphia, Aug. 18, '68.

The Libby prison has been suggested as a suitable place for the Democratic headquarters during the Presidential canvass.

The Libby prison has been suggested as a suitable place for the Democratic headquarters during the Presidential canvass.

The Libby prison has been suggested as a suitable place for the Democratic headquarters during the Presidential canvass.

The Libby prison has been suggested as a suitable place for the Democratic headquarters during the Presidential canvass.

The Libby prison has been suggested as a suitable place for the Democratic headquarters during the Presidential canvass.

The Libby prison has been suggested as a suitable place for the Democratic headquarters during the Presidential canvass.

The Libby prison has been suggested as a suitable place for the Democratic headquarters during the Presidential canvass.

INDIANA. Failure of the Democratic Canvass in Indiana.—The Leaders Skeelending.

INDIANA. Failure of the Democratic Canvass in Indiana.—The Leaders Skeelending.

INDIANA. Failure of the Democratic Canvass in Indiana.—The Leaders Skeelending.

INDIANA. Failure of the Democratic Canvass in Indiana.—The Leaders Skeelending.

INDIANA. Failure of the Democratic Canvass in Indiana.—The Leaders Skeelending.

INDIANA. Failure of the Democratic Canvass in Indiana.—The Leaders Skeelending.

INDIANA. Failure of the Democratic Canvass in Indiana.—The Leaders Skeelending.

The Democrats delight in stigmatizing the Republicans, because they are for maintaining the public faith, as the "bondholders party."

The Democrats delight in stigmatizing the Republicans, because they are for maintaining the public faith, as the "bondholders party."

The Democrats delight in stigmatizing the Republicans, because they are for maintaining the public faith, as the "bondholders party."

The Democrats delight in stigmatizing the Republicans, because they are for maintaining the public faith, as the "bondholders party."

The Democrats delight in stigmatizing the Republicans, because they are for maintaining the public faith, as the "bondholders party."

The Democrats delight in stigmatizing the Republicans, because they are for maintaining the public faith, as the "bondholders party."

The Democrats delight in stigmatizing the Republicans, because they are for maintaining the public faith, as the "bondholders party."

NEW ADVERTISEMENTS. CAMPAIGN. TRANSPARENTS AND BANNERS. Plain and Illuminating Colors.

NEW ADVERTISEMENTS. CAMPAIGN. TRANSPARENTS AND BANNERS. Plain and Illuminating Colors.

NEW ADVERTISEMENTS. CAMPAIGN. TRANSPARENTS AND BANNERS. Plain and Illuminating Colors.

NEW ADVERTISEMENTS. CAMPAIGN. TRANSPARENTS AND BANNERS. Plain and Illuminating Colors.

NEW ADVERTISEMENTS. CAMPAIGN. TRANSPARENTS AND BANNERS. Plain and Illuminating Colors.

NEW ADVERTISEMENTS. CAMPAIGN. TRANSPARENTS AND BANNERS. Plain and Illuminating Colors.

NEW ADVERTISEMENTS. CAMPAIGN. TRANSPARENTS AND BANNERS. Plain and Illuminating Colors.

NEW ADVERTISEMENTS. CAMPAIGN. TRANSPARENTS AND BANNERS. Plain and Illuminating Colors.

NEW ADVERTISEMENTS. CAMPAIGN. TRANSPARENTS AND BANNERS. Plain and Illuminating Colors.

NEW ADVERTISEMENTS. CAMPAIGN. TRANSPARENTS AND BANNERS. Plain and Illuminating Colors.

NEW ADVERTISEMENTS. CAMPAIGN. TRANSPARENTS AND BANNERS. Plain and Illuminating Colors.