

New Advertisements. A New Feature in the Spice Trade! IMPORTANT TO HOUSEKEEPERS E. R. DURKEE & CO.'S SELECT SPICES...

B. M. GILDEA, D. D. S. STATE STREET, OPPOSITE THE BRADY HOUSE. All operations, Surgical and Mechanical...

PROF. ADOLPH P. TEUPSER, WOULD respectfully inform his old patrons and the public generally, that he has returned to the city...

SCHEFFER'S BOOK STORE. (NEAR THE HARRISBURG BRIDGE.) UNION ENVELOPES. NOTE PAPER, of six different designs...

ST. LOUIS HOTEL, CHESTNUT ST., ABOVE THIRD, PHILADELPHIA. In the immediate neighborhood of the Pennsylvania Hotel...

STONE FOR SALE. BUILDING STONE or Stone suitable for curbing purposes, will be delivered to any part of the city...

Wheeler & Wilson Sewing Machines. NEW IMPROVEMENTS AT REDUCED PRICES. THE WHEELER & WILSON Manufacturing Company...

WALLOWER'S LINE, DAILY BETWEEN HARRISBURG and PHILADELPHIA. Wm. A. Durk, Agent, 812 Market Street, Philadelphia...

FIRST CLASS GROCERIES! LARGE ARRIVAL! HAVING JUST RETURNED from the greatest cities where we have selected with the most care...

Medical. "They go right to the Spot." INSTANT RELIEF! STOP YOUR COUGH! PURIFY YOUR BREATH! STRENGTHEN YOUR VOICE! SPALDING'S THROAT CONFECTIONS...

Medical. BERHAVE'S Holland Bitters FOR DYSPEPSIA, Liver Complaint, Fever and Ague, &c. The successful introduction and use of this celebrated Remedy has been the signal for a literal flood of compounds called "Bitters"...

Medical. BERHAVE'S Holland Bitters FOR HEARTBURN, Try Berhave's Holland Bitters. FOR ACIDITY, Try Berhave's Holland Bitters. FOR WATERBRASH, Try Berhave's Holland Bitters...

Medical. BERHAVE'S Holland Bitters FOR LOSS OF APPETITE, Try Berhave's Holland Bitters. FOR COSTIVENESS, Try Berhave's Holland Bitters. FOR PILES, Try Berhave's Holland Bitters...

Medical. CEPHALIC PILLS CURE SICK HEADACHE CURE NERVOUS HEADACHE CURE ALL KINDS OF HEADACHE. By the use of these Pills the periodic attacks of Nervous or Sick Headache may be prevented...

Medical. SPALDING'S PREPARED GLUE! SPALDING'S PREPARED GLUE! SPALDING'S PREPARED GLUE! SPALDING'S PREPARED GLUE!

Medical. SPALDING'S PREPARED GLUE! SPALDING'S PREPARED GLUE! SPALDING'S PREPARED GLUE! SPALDING'S PREPARED GLUE!

Medical. SPALDING'S PREPARED GLUE! SPALDING'S PREPARED GLUE! SPALDING'S PREPARED GLUE! SPALDING'S PREPARED GLUE!

Medical. SPALDING'S PREPARED GLUE! SPALDING'S PREPARED GLUE! SPALDING'S PREPARED GLUE! SPALDING'S PREPARED GLUE!

Medical. BERHAVE'S Holland Bitters FOR DYSPEPSIA, Liver Complaint, Fever and Ague, &c. The successful introduction and use of this celebrated Remedy has been the signal for a literal flood of compounds called "Bitters"...

Medical. BERHAVE'S Holland Bitters FOR HEARTBURN, Try Berhave's Holland Bitters. FOR ACIDITY, Try Berhave's Holland Bitters. FOR WATERBRASH, Try Berhave's Holland Bitters...

Medical. BERHAVE'S Holland Bitters FOR LOSS OF APPETITE, Try Berhave's Holland Bitters. FOR COSTIVENESS, Try Berhave's Holland Bitters. FOR PILES, Try Berhave's Holland Bitters...

Medical. CEPHALIC PILLS CURE SICK HEADACHE CURE NERVOUS HEADACHE CURE ALL KINDS OF HEADACHE. By the use of these Pills the periodic attacks of Nervous or Sick Headache may be prevented...

Medical. SPALDING'S PREPARED GLUE! SPALDING'S PREPARED GLUE! SPALDING'S PREPARED GLUE! SPALDING'S PREPARED GLUE!

Medical. SPALDING'S PREPARED GLUE! SPALDING'S PREPARED GLUE! SPALDING'S PREPARED GLUE! SPALDING'S PREPARED GLUE!

Medical. SPALDING'S PREPARED GLUE! SPALDING'S PREPARED GLUE! SPALDING'S PREPARED GLUE! SPALDING'S PREPARED GLUE!

Medical. SPALDING'S PREPARED GLUE! SPALDING'S PREPARED GLUE! SPALDING'S PREPARED GLUE! SPALDING'S PREPARED GLUE!

Medical. SPALDING'S PREPARED GLUE! SPALDING'S PREPARED GLUE! SPALDING'S PREPARED GLUE! SPALDING'S PREPARED GLUE!

Medical. Areyer's CATHARTIC PILLS. ARE YOU SICK, feeble, or complaining? Are you out of order, with your system deranged, and your feelings uncomfortable? These symptoms are often the prelude to serious illness...

Medical. Areyer's CATHARTIC PILLS. ARE YOU SICK, feeble, or complaining? Are you out of order, with your system deranged, and your feelings uncomfortable? These symptoms are often the prelude to serious illness...

Medical. Areyer's CATHARTIC PILLS. ARE YOU SICK, feeble, or complaining? Are you out of order, with your system deranged, and your feelings uncomfortable? These symptoms are often the prelude to serious illness...

Medical. Areyer's CATHARTIC PILLS. ARE YOU SICK, feeble, or complaining? Are you out of order, with your system deranged, and your feelings uncomfortable? These symptoms are often the prelude to serious illness...

Medical. Areyer's CATHARTIC PILLS. ARE YOU SICK, feeble, or complaining? Are you out of order, with your system deranged, and your feelings uncomfortable? These symptoms are often the prelude to serious illness...

Medical. Areyer's CATHARTIC PILLS. ARE YOU SICK, feeble, or complaining? Are you out of order, with your system deranged, and your feelings uncomfortable? These symptoms are often the prelude to serious illness...

Medical. Areyer's CATHARTIC PILLS. ARE YOU SICK, feeble, or complaining? Are you out of order, with your system deranged, and your feelings uncomfortable? These symptoms are often the prelude to serious illness...

Medical. Areyer's CATHARTIC PILLS. ARE YOU SICK, feeble, or complaining? Are you out of order, with your system deranged, and your feelings uncomfortable? These symptoms are often the prelude to serious illness...

Medical. Areyer's CATHARTIC PILLS. ARE YOU SICK, feeble, or complaining? Are you out of order, with your system deranged, and your feelings uncomfortable? These symptoms are often the prelude to serious illness...

Miscellaneous. LADIES' WINE. SPEER'S SAMBUCCI WINE, Of Cultivated Portugal Elder. Excellent Wine for Females. Every Family Should Use. SPEER'S SAMBUCCI WINE, CELEBRATED for its medicinal and benevolent qualities...

Miscellaneous. LADIES' WINE. SPEER'S SAMBUCCI WINE, Of Cultivated Portugal Elder. Excellent Wine for Females. Every Family Should Use. SPEER'S SAMBUCCI WINE, CELEBRATED for its medicinal and benevolent qualities...

Miscellaneous. LADIES' WINE. SPEER'S SAMBUCCI WINE, Of Cultivated Portugal Elder. Excellent Wine for Females. Every Family Should Use. SPEER'S SAMBUCCI WINE, CELEBRATED for its medicinal and benevolent qualities...

Miscellaneous. LADIES' WINE. SPEER'S SAMBUCCI WINE, Of Cultivated Portugal Elder. Excellent Wine for Females. Every Family Should Use. SPEER'S SAMBUCCI WINE, CELEBRATED for its medicinal and benevolent qualities...

Miscellaneous. LADIES' WINE. SPEER'S SAMBUCCI WINE, Of Cultivated Portugal Elder. Excellent Wine for Females. Every Family Should Use. SPEER'S SAMBUCCI WINE, CELEBRATED for its medicinal and benevolent qualities...

Miscellaneous. LADIES' WINE. SPEER'S SAMBUCCI WINE, Of Cultivated Portugal Elder. Excellent Wine for Females. Every Family Should Use. SPEER'S SAMBUCCI WINE, CELEBRATED for its medicinal and benevolent qualities...

Miscellaneous. LADIES' WINE. SPEER'S SAMBUCCI WINE, Of Cultivated Portugal Elder. Excellent Wine for Females. Every Family Should Use. SPEER'S SAMBUCCI WINE, CELEBRATED for its medicinal and benevolent qualities...

Miscellaneous. LADIES' WINE. SPEER'S SAMBUCCI WINE, Of Cultivated Portugal Elder. Excellent Wine for Females. Every Family Should Use. SPEER'S SAMBUCCI WINE, CELEBRATED for its medicinal and benevolent qualities...

Miscellaneous. LADIES' WINE. SPEER'S SAMBUCCI WINE, Of Cultivated Portugal Elder. Excellent Wine for Females. Every Family Should Use. SPEER'S SAMBUCCI WINE, CELEBRATED for its medicinal and benevolent qualities...

Lines of Travel & Transportation. Northern Central Railway. NOTICE. CHANGE OF SCHEDULE. SUMMER ARRANGEMENT. THREE TRAINS DAILY TO AND FROM BALTIMORE ON AND AFTER SUNDAY, JUNE 10th...

Lines of Travel & Transportation. Northern Central Railway. NOTICE. CHANGE OF SCHEDULE. SUMMER ARRANGEMENT. THREE TRAINS DAILY TO AND FROM BALTIMORE ON AND AFTER SUNDAY, JUNE 10th...

Lines of Travel & Transportation. Northern Central Railway. NOTICE. CHANGE OF SCHEDULE. SUMMER ARRANGEMENT. THREE TRAINS DAILY TO AND FROM BALTIMORE ON AND AFTER SUNDAY, JUNE 10th...

Lines of Travel & Transportation. Northern Central Railway. NOTICE. CHANGE OF SCHEDULE. SUMMER ARRANGEMENT. THREE TRAINS DAILY TO AND FROM BALTIMORE ON AND AFTER SUNDAY, JUNE 10th...

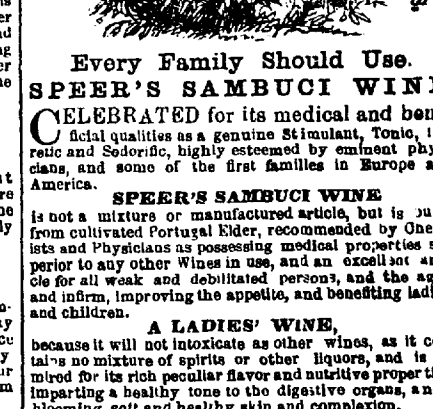
Lines of Travel & Transportation. Northern Central Railway. NOTICE. CHANGE OF SCHEDULE. SUMMER ARRANGEMENT. THREE TRAINS DAILY TO AND FROM BALTIMORE ON AND AFTER SUNDAY, JUNE 10th...

Lines of Travel & Transportation. Northern Central Railway. NOTICE. CHANGE OF SCHEDULE. SUMMER ARRANGEMENT. THREE TRAINS DAILY TO AND FROM BALTIMORE ON AND AFTER SUNDAY, JUNE 10th...

Lines of Travel & Transportation. Northern Central Railway. NOTICE. CHANGE OF SCHEDULE. SUMMER ARRANGEMENT. THREE TRAINS DAILY TO AND FROM BALTIMORE ON AND AFTER SUNDAY, JUNE 10th...

Lines of Travel & Transportation. Northern Central Railway. NOTICE. CHANGE OF SCHEDULE. SUMMER ARRANGEMENT. THREE TRAINS DAILY TO AND FROM BALTIMORE ON AND AFTER SUNDAY, JUNE 10th...

Lines of Travel & Transportation. Northern Central Railway. NOTICE. CHANGE OF SCHEDULE. SUMMER ARRANGEMENT. THREE TRAINS DAILY TO AND FROM BALTIMORE ON AND AFTER SUNDAY, JUNE 10th...



Great Cure. DR. LELLAND'S ANTI RHEUMATIC BAND. IS THE ONLY KNOWN REMEDY FOR Rheumatism, Gout and Neuralgia AND A SURE CURE FOR All Mercurial Diseases.

Very Liberal Reductions to Wholesale Dealers. TERMS CASH. For sale by all Druggists and Storekeepers generally throughout the country.

JOHNS & CROSBY'S American Cement Glue. The Strongest Glue in the World FOR CEMENTING WOOD, LEATHER, GLASS, IVORY, CHINA, MARBLE, FORTALIN, ALABASTER, BONE, CORAL, &c., &c.

FASHIONABLE CLOTHING. SPRING and SUMMER STYLES. 1861. PHILADELPHIA FASHIONS. GRANVILLE STOKES' ONE PRICE GIFT CLOTHING EMPORIUM No. 601 CHESTNUT STREET.

A VERY HEAVY STOCK OF BLACK and SECOND MOURNING DRESS GOODS! OF EVERY DESCRIPTION JUST OPENED. At Prices below the Cost of Importation. CALL AT CATHART'S, Next door to the Harrisburg Bank.

FARMER'S HOTEL. THE subscriber begs leave to inform his friends and the public that he has taken the FARMER'S HOTEL, in Market Street, opposite the Post Office, formerly J. Smith's, where he is prepared to accommodate them on reasonable terms.

THE SOLDIER'S BOOK. M'Kinney's "Our Government" a complete and correct Constitution of the United States, explaining the nature and powers of our government, from judicial and authentic sources. Price 25 cts. The sale at BRANKEN'S STORE.

NEW AIR LINE ROUTE. THREE TRAINS DAILY TO NEW YORK. TWO TRAINS DAILY TO PHILADELPHIA. WITHOUT CHANGE OF CARS. ON AND AFTER MONDAY, JUNE 10th, 1861, the Passenger Trains will leave the Philadelphia Reading Railroad Depot, at Harrisburg, for New York and Philadelphia, as follows:

WESTWARD. EAST LINE leaves Harrisburg at 9:30 a.m., and Philadelphia at 8 a.m., arriving at Harrisburg at 1 p.m. WEST LINE leaves Harrisburg at 11:30 a.m., and Philadelphia at 10 a.m., arriving at Harrisburg at 3 p.m.

PENNSYLVANIA RAIL ROAD. SUMMER TIME TABLE. THREE TRAINS DAILY TO AND FROM PHILADELPHIA. ON AND AFTER MONDAY, JUNE 10th, 1861, the passenger trains of the Pennsylvania Railroad will depart from and arrive at Harrisburg, as follows:

WESTWARD. THROUGH EXPRESS TRAIN leaves Philadelphia at 10:30 p.m., Harrisburg at 2:35 a.m., and arrives at Harrisburg at 6:30 a.m. MAIL TRAIN leaves Philadelphia at 12:30 p.m., Harrisburg at 1:00 p.m., and arrives at Harrisburg at 12:00 midnight.

WESTWARD. THROUGH EXPRESS TRAIN leaves Philadelphia at 10:30 p.m., Harrisburg at 2:35 a.m., and arrives at Harrisburg at 6:30 a.m. MAIL TRAIN leaves Philadelphia at 12:30 p.m., Harrisburg at 1:00 p.m., and arrives at Harrisburg at 12:00 midnight.

WESTWARD. THROUGH EXPRESS TRAIN leaves Philadelphia at 10:30 p.m., Harrisburg at 2:35 a.m., and arrives at Harrisburg at 6:30 a.m. MAIL TRAIN leaves Philadelphia at 12:30 p.m., Harrisburg at 1:00 p.m., and arrives at Harrisburg at 12:00 midnight.

WESTWARD. THROUGH EXPRESS TRAIN leaves Philadelphia at 10:30 p.m., Harrisburg at 2:35 a.m., and arrives at Harrisburg at 6:30 a.m. MAIL TRAIN leaves Philadelphia at 12:30 p.m., Harrisburg at 1:00 p.m., and arrives at Harrisburg at 12:00 midnight.

WESTWARD. THROUGH EXPRESS TRAIN leaves Philadelphia at 10:30 p.m., Harrisburg at 2:35 a.m., and arrives at Harrisburg at 6:30 a.m. MAIL TRAIN leaves Philadelphia at 12:30 p.m., Harrisburg at 1:00 p.m., and arrives at Harrisburg at 12:00 midnight.