

NEW GOODS

ANDERSON BENEDICT & CO'S.

FIRST SUPPLY.

WE are now receiving our first supply of new FALL AND WINTER GOODS

to which we would ask the attention of our customers and the public generally—believing it to be to the interest of all to give us a call before buying elsewhere.

Also a large assortment of FLOOR OIL CLOTHS, IMPORTED CARPET, HOMEMADE CARPET, CARPET CHAIN.

OIL BLADES, WINDOW OIL CLOTH, CHECK MATTING, PLAIN MATTING, CURTAIN FIXTURES.

HARDWARE, GROCERIES, QUEENWARE, NAILS, &c.

Please give us a call and we will try to satisfy you in price and quality. ANDERSON BENEDICT & CO. Oct 12, 1871.

FIRST GRAND OPENING

FALL AND WINTER GOODS!

PRICE & HOEFELICH'S,

IN PART AS FOLLOWS:

Black Alpaca, Mohair Lustres, Plain and Fancy Poplins, in double warps, English and American manufactures

Japanese Silk Robes, Japanese Repp Poplins, in new affects.

Black silks and Empress clothes, sublime qualities.

Ottoman and Water vilettes Shells, both long and square, Morning and Breakfast Shells, all colors—cheap.

Wool & Cotton Flannels, Plain and Opera Flannels, in large and elegant assortment.

Cheeks, Shirting Stripes, Chambrays and Domestic Ginghams, in every variety.

Ladies Water Proof Cloakings, in black and colors.

Mens Bl'k and Fancy clothes and cassimeres. Also corduroys, Kersays and Scotch cherries, in quantities and at prices to suit all.

Mens' Chainchila and Beaver over coatings, in heavy and light weights—Cheap.

Large lot of Ladies Trimmings and Fancy Goods, in new and elegant designs.

Garments Furnishing Goods, under wear &c., a large supply.

White Good, Hosiery, Gloves and Notions, a full line of each.

Mens Boots and Shoes, Ladies Shoes and Gaiters, Gum and Heavy Shoes.

Ingrain Gerthing, Rag and Stair Carpets, at reduced prices.

Carriage Robes, Horse Blankets and Fancy Spreads, a full line.

Queensware, Glass ware, Hard and Wooden ware, all kinds cheap.

Rio, Laguna and Roasted coffees, in large quantities.

Portorico and Orleans Sugars, Demerara and White Sugar, large lot in store.

Don't fail to examine our stock. Oct 12, 1871. PRICE & HOEFELICH'S. SHAD AND HERRING.—Mess. Shad and Potomac Herring in bbls. for sale by W. A. REID.

PUBLIC SALE OF VALUABLE REAL ESTATE!

THE undersigned, Agents for the heirs of Joseph Garver, dec'd., will offer at Public Sale, at the Court House, in Hagerstown, Maryland, on

THURSDAY, OCTOBER 31st, 1871, at 10 o'clock, A. M. the following tracts of land:

NO. 1.—THE MANSION FARM

Situated about 1 1/2 miles South east of Ringgold, Washington County, Md., adjoining the lands of John Welby, Daniel Rowe, Jacob Stouffer and others.

CONTAINING 266 ACRES AND 120 PERCHES, 70 ACRES of which are in Timber, some of the finest Chestnut in the County. The improvements consist of a

Large and Convenient Two Story BRICK DWELLING HOUSE,

containing 9 Rooms and Kitchen; ONE TENANT HOUSE,

Bank Barn, 90 feet long, Wagon Shed, HOG PEN, CIDER PRESS WITH SHED, WASH AND SMOKE HOUSE, WOOD HOUSE,

BLACKSMITH SHOP, and all other necessary out buildings, a thriving

ORCHARD OF CHOICE FRUIT, a never failing well of water near the house, and a Cistern near the kitchen door, a constant stream runs through one end of the farm. All of the above buildings are in good repair the roofing nearly new the Dwelling covered with slate. The above farm is not surpassed in fertility and productiveness, is pleasantly situated and in view of the rapidly completing of the Western Md. Railroad and the proximity of this property to it makes it one of the most desirable farms in the county.

NO. 2.—Situated on the road leading from Smithsburg to Waynesboro', about 1 1/2 miles from the former place, adjoining lands of Rev. Jos. F. Rohrer, Mathias Hoffman and others, containing

28 ACRES AND 29 PERCHES, of the best quality of land, all clear and in a high state of cultivation improved with a TWO-STORY BRICK HOUSE,

containing 8 Rooms and Kitchen; Large Barn, Spring, Smoke and Bake House, Wood Shed, Hog Pen, with Corn House, an ORCHARD OF CHOICE FRUIT, and a never failing spring of excellent water near the house. This property being situated within one mile of the Western Md. R. R. in a beautiful and healthy neighborhood renders it desirable as a private residence.

NO. 3.—MILL AND FARM Situated near No. 2, adjoining the lands of Daniel Baer, F. M. Stouffer and others, containing

45 ACRES AND 91 PERCHES, of best quality of limestone land. Also a fine meadow improved with a comfortable

LOG DWELLING HOUSE, New Bank Barn, Smoke and Spring House, Hog Pen, and other buildings. Also an ORCHARD OF GOOD FRUIT and spring near the house. The Mill is a substantial

BRICK BUILDING with 17 feet overshoot wheel. TWO RUN OF BUBS with all the latest improved machinery necessary for a complete Flouring Mill and is situated in a good neighborhood for home and trade. These Farms are all well fenced, the greater portion Locust post and Chestnut, and lie convenient to Churches of all denominations, School-houses, Stores, &c.

NO. 4.—MOUNTAIN LAND Containing 44 Acres and 80 Perches, well set with Chestnut and Oak Timber within a few rods of the Western Md. R. R. adjoining the lands of Jacob Schockey's heirs and others.

TERMS OF SALE.—One-third of the purchase money to be paid on the first day of April, 1872, and the remainder in two equal annual payments, the purchaser to give note with approved security, bearing interest from day of sale, and on payment of the whole purchase money a good and sufficient deed will be executed.

The growing crops reserved with the privilege of cutting and threshing the same on the lands. Possession given on the 1st day of April, 1872.

Persons wishing further information will address JOHN W. GARVER, Hagerstown, Md., DANIEL H. GARVER, Waynesboro', Pa., or JOSEPH GARVER residing on No. 2, JOHN W. GARVER, DANIEL H. GARVER, Agents for the Heirs. Sept 28-18

R. SHELLES, Aucr.

PUBLIC SALE.

THE subscriber will offer at Public Sale, on the premises, one-half mile South of Waynesboro', on the road leading to Ringgold, on Saturday the 21st day of October, 8 acres and 48 perches best quality Limestone Land, with a never failing well of water.

FRAMED DWELLING HOUSE thereon, a well near the door. There is also on the lot a variety of choice fruit trees. The property will be sold together or divided to suit purchasers. Sale to commence at 1 o'clock on said day when terms will be made known by

JOHN H. MILLER, Sept 14-18

HIDES AND LEATHER.

THE subscriber will pay the highest market price for Hides delivered at his Tannery, in Quincy, or at the Hardware Store of S. B. Rinehart, in Waynesboro', where a supply of his leather will be kept for sale.

JOHN T. STULL, Sept 28-18

NOTICE.

THE undersigned has appointed Frederick Dill of Quincy township, agent to collect his accounts and transact other business pertaining to the same.

July 6-17 JEREMIAH HESS M. D.

WESTERN MARYLAND RAIL ROAD.

On and after Monday, October 2d, A Regular Passenger Train, will be run between Baltimore and Sabillasville, stopping at intermediate stations. Leave Baltimore at 8:30 A. M. Sabillasville at 1:30 P. M.

Oct 12-18. J. T. RIGNEY, Sup't.

MILLINEY GOODS! TO THE LADIES!

MRS. C. L. HOLLINGER has just received a full supply of new Milinery goods. Ladies are invited to call and examine her stock.

Sept 20.

L. O. BRACKBILL, PHOTOGRAPHER,

S. E. Corner of the Diamond, WAYNESBORO', PA.

HAS at all times a fine assortment of Pictures Frames and Mountings. Call and see specimen pictures. June 11.

VALUABLE FARM AND MOUNTAIN LAND AT PUBLIC SALE

The subscriber will offer at Public Sale on the premises at 10 o'clock, on Saturday, the 28th of October, 1871,

his Farm and Mountain Land, situated 2 miles South east of Ringgold and the same distance North East from Smithburg, Washington Co., Md., and on the line of the Western Maryland Rail Road. This land will be sold in different parcels, as follows,

No. 1.—Is a farm containing 110 ACRES, more or less 20 Acres of which is in Timber principally heavy white oak, black walnut, &c. Improved by a comfortable two-story

Log Dwelling, a fine Bank Barn with Graneries, a new Wagon Shed with Crib, and a large Hog Pen attached. There are also a Blacksmith Shop, Smoke House, &c. There is a well of never failing water at the door with pump and a constant stream of running water passing the buildings through the house and barn-yards, and through the entire length of the farm. Stock can have access to water from every field on the place. This cannot be surpassed as a stock and grain farm. It is laid off in ten fields and under good fencing. There are

Three Orchards on the place, containing over 1100 Fruit Trees, principally Apple and Peach, all in a thriving condition. This farm lies convenient to Churches, Schools, near neighbors, &c. The Buildings are one fourth of a mile from the Western Md., R. R.

No. 2.—Is a field containing 14 Acres more or less and in a good state of cultivation. This field is separated from No. 1, by a private road.

The Mountain Land is some of the best on the South Mountain heavily set with chestnut, rock oak, &c. in a thriving condition on the first rise of the South Mountain and being the first timber on the Railroad after leaving Smithburg going East. This will be sold in lots, all of which front on the Railroad with the exception of two. The lots are laid off as follows:

Table with 2 columns: Lot No., Area. Lot 1 contains 4 Acres and 109 Perches. Lot 2 " 4 " " 137 " Lot 3 " 4 " " 10 " Lot 4 " 5 " " 60 " Lot 5 " 5 " " 13 " Lot 6 " 5 " " 61 " Lot 7 " 5 " " 23 " Lot 8 " 4 " " 122 " Lot 9 " 4 " " 135 " Lot 10 " 4 " " 102 " Lot 11 " 4 " " 89 " Lot 12 " 5 " " 168 " Lot 13 " 4 " " 100 " Lot 14 " 4 " " 82 " Lot 15 " 7 " " 124 "

TERMS OF SALE, on farm No. 1, and field No. 2, are one-third of the purchase money to be paid on the first day of April, 1872, balance in 1 and 2 years from date of sale, purchaser to give notes with approved security for deferred part bearing interest from April 1st, 1872, when possession will be given. On payment of the whole purchase money a good and sufficient deed will be given clear of all incumbrances.

Growing crops to be reserved with the privilege of cutting, gathering, and threshing the same on the farm.

TERMS of the Mountain land are—One-third to be paid on the first day of April, 1872, the balance in one year from date of sale purchaser giving notes with approved security bearing interest from day of sale.—On payment of the whole purchase money clear of all encumbrance Possession given immediately.

Persons wishing to view the lands previous to day of sale can call on the subscriber or living on the farm No. 1. A plat of the Mountain land can be seen on application to the undersigned.

Oct 5-18 CHAS. A. STOFFER, JOSEPH BOWARD, Aucr.

CALDWELL & CO., CHEAP DRY GOODS STORES—RIGHT BY THE COURT HOUSE, HAGERSTOWN, MD. AND NORTH-EAST CORNER OF PUBLIC SQUARE, WAYNESBORO', PA.

WAYNESBORO' MUTUAL FIRE INSURANCE COMPANY,

WAYNESBORO', PA., INSURES AGAINST LOSS OR DAMAGE BY FIRE

On all safe class property at reasonable rates

OFFICERS: W. S. AMBERSON, President. SIMON LECRON, Vice President. JOE DOUGLAS, Secretary. JOE W. MILLER, Treasurer.

DIRECTORS: W. S. Amberson, Simon Lecron, Lewis S. Forney, Jacob Hoover, Jos. Douglas, Jos. Price, Jacob J. Miller, Jos. W. Miller, Ben. E. Funk, D. B. Russell, Levi Sanders, Jacob Good.

DAVID M. GOOD, Agent, June 16, '70] Waynesboro', Pa.

HOUSE FURNITURE

I. H. WHITMOR, Wholesale and Retail Dealer, and Manufacturer of HOUSE FURNITURE AND UPHOLSTERER, GREENCASTLE, PA., takes this method of informing his customers and the public that he has

REDUCED THE PRICE OF FURNITURE FROM ten to twenty per cent. Owing to the advance in the cost of the material he can and will sell Furniture at a less price than any other Manufacturer in the State.

HAVING THREE STORE ROOMS, filled with every variety of Furniture, from a plain, common article, to the finest in use, he feels warranted in saying that he can please all tastes.

EXAMINE LIST OF PRICES. BEDSTEADS. Cottage—Imitation of Walnut \$5, 6, 7, to 8 Solid Walnut 8, 9, to 10 Jenny Lind—3-Arch Top Panel, 14, 18, to 18 3-Arch Top Panel, 10, 12, to 14 Round, Corner-foot, 3 Panels Walnut, 25 to 30 Carved Oval Panel Walnut, Moulded 30, 35, to 40 Antique—New Style 25, 30, 35, 40, to 60 Fine Antique Chamber Suits, 130 to 175 Cot. Chamber Suits, 35, 38, 40, 45, to 60 Solid Walnut Suits 60, 75, to 85 BUREAUS. Im. Wal. 4 drawers, with glass, wood top, 14, 15, to 16 Im. Wal. 4 drawers, with glass, Marble top, 17, 18, to 30 Solid Wal. 4 drawers, with glass, wood top, 20, 22, 25, to 32 Marble top 25, 30, 32, to 60 Imitation Walnut 10, 12, to 14 TABLES. Dining Table, six legs, \$7.50 to 9 Breakfast do., four legs, 9, 10, 12 to 15 Mar. do 20 dir. patterns, 9, 10, 12 to 15 Extension Tables per foot 2 to 3 CHAIRS. Windsor or Wood seats (3 doz) \$5, 6, 7 to 10 Cane seats (3 doz.) 9, 10, 11, 12, to 30 (Have over 600 of the above on hand.) Wood Seat Rocking Chairs, 1.25 to 5 Child Rocking Chairs, 1.00 to 2.00 Willow Seat Rocking Chairs, 2 to 10 Spring Seated Chairs, Upholstered in Hair Cloth, Brocatel, Rep and Terry, ranging in price per half dozen from 25 to 75 Rocking Chairs uphol. as above 9 to 15 Tete-a-Tete, uphol. as above, (each) from 20, 22, 25, 30 to 75 Box or plain Sofa, from 18, 20, 22 to 30 Lounges upholstered in Hair Cloth, Brocatel, Rep, Terry and Damask, Spring Seats (each) from 7, 8, 9, 10, 11, 12 to 30 WARDROBES. Imitation Walnut, for \$10, 12, 14, 18 to 30 Solid Walnut, for \$15, 20, 25, to 50 Also, side Boards, Wash Stands, Mattresses, and in fact everything in the Furniture line. The limits of an advertisement is entirely too narrow to give a list of Furniture made at this establishment. CALL & SEE FOR YOURSELVES. Remember the place, I. H. WHITMOR, Dec. 1, 1871, Greencastle, Pa.

PRIVATE SALE.

THE undersigned, Executor of the Estate of John Lantz, Sr., late of Guilford township, dec'd., offers at Private Sale, the following described Real Estate, bound by lands of Jacob Stouffer, John Metz and Ben. Metz being situated on the Falling Spring road and Chambersburg and Gettysburg turnpike and containing

SEVEN ACRES of first quality Limestone Land. The improvements are a two story Brick Dwelling House having 12 rooms, 3 basements and 2 cellars; wash and bake houses under one roof; Frame Barn with barn floor, wagon shed attached; hog pen, buggy shed and all the necessary out buildings. There is also on the premises, an orchard of choice fruit and cherries, peaches, plums, grapes, &c., in abundance. The Falling Spring runs thro' the end of this property.

Also, at Private Sale, a Valuable Tract of Land being situated in Greene township, adjoining lands of Robert Black and John Crawford, on the Gettysburg turnpike, about one mile South-East of Greenwood, containing 25 acres and 34 perches, neat measure, of Rock Oak, Chestnut and Pine Timber Land. This is a highly valuable and worthy of the attention of purchasers. Parties wishing to see either of the above can do so by calling on the undersigned, residing in Staufferstown. JOHN LANTZ, Sep. 7-17 Executor of John Lantz, Sr.

LUMBER, LUMBER, &c.

THE subscriber has for sale Chestnut Shingles, Palings, Planing Laths, Shingling Laths, Pine Lumber from a half to one inch. All other sizes of Lumber furnished to order. Also, Oak, Pine and Chestnut Wood by the load for sale on the ground. Life has also for sale. A. S. MONN. April 23-17.

BOOT AND SHODMAKING.

THE subscriber would inform the public that he is at all times prepared to make a order Goods Coarse or fine Boots, also coarse or fine work for Ladies or Misses, including the latest style of Gaiters.—Requiring done at short notice, and measures taken in private families if desired. Shop on East Main Street, in the room formerly occupied by J. Elden, as a flour and feed store. THOS. J. HOLLINGORTH, July 23-17

CLOVER SEED. 2000 Bushels Clover Seed wanted, ELLEN, STOVER & WOLFF, Sept 21-30.

GRATIFYING INTELLIGENCE!

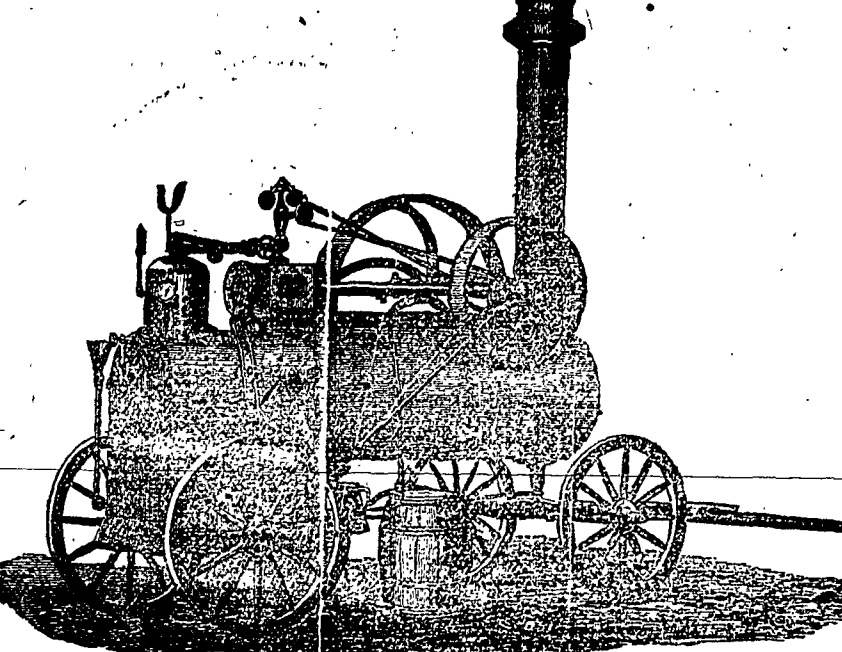
E. ELDEN, Has now on hand a Full Line of GOODS JUST RECEIVED. Look at the List!

HATS for Men and Boys; All the Latest Styles; BOOTS, SHOES & GAITERS For Men and Boys Wear. Ladies Surg Gaiters, At very low prices. Also, Ladies Shoes, Latest and Best Styles. Misses and Childrens Shoes in great variety of all kinds and varieties.

Watches, clocks and Jewelry repaired at short notice and warranted. Thankful for past favors he hopes by fair dealing to all to merit a continuance of public patronage. June 29, 1871. E. ELDEN.

D. S. SMITH Has a complete assortment LADIES, GENTLEMEN'S, MISSES AND CHILDREN'S BOOTS, SHOES AND GAITERS, THOMSON'S "GLOVE FITTING CORSETS," at SMITH'S. SCHOOL BOOKS AND STATIONARY, of all kinds at SMITH'S. HATS AND CAPS, A full stock now ready, consisting of all the latest styles, at SMITH'S. PAPER COLLARS, TIES, GLOVES, Suspenders, everything in that line, at SMITH'S Town Hall Store. Nov. 3, 1870. COACHMAKING. THE subscriber announces to his friends and the public that he has purchased the Coach Factory formerly owned by Israel Hess, and is now engaged in the above business, on Main Street, at the East end of Waynesboro. Having a knowledge of the business, and employing none but the best workmen, and by strict attention to business he hopes to merit a share of patronage. All kinds of new work on hand orders filled promptly. Jan. 15-17. GEO. B. HAWKER. HOW IS THIS FOR HIGH. JOHN FORD in returning thanks to the public for their patronage announces that he intends removing his shop to the Basement of Walker's Building (and not leaving town as is the belief of many) where he intends carrying on the BOOT AND SHOE BUSINESS as usual. All persons knowing themselves indebted to me will please call and settle their accounts immediately, for I pay cash for my stock and must have my money. Don't want to see the face of that unwelcome visitor, the Deputy from 'Fort Fletcher,' prowling about my shop seeking whom he may devour, &c. Customers will therefore find me at the Basement referred to after the first of April next. [Jan 26] JOHN FORD. ANTIETAN MARBLE WORKS! H. WALTER & BRO. MANUFACTURERS AND DEALERS IN Monuments, Tombs, Headstones, &c. &c., We call attention to our assortment of the above, comprising the newest and most approved styles. Having the advantage of Water-Power, and a long experience in the STONE CUTTING BUSINESS, we are able to fill orders at the shortest notice and on most reasonable terms. Give us a call at our Yard, near Antietan Junction on the Waynesboro' and Hagerstown Turnpike, two miles from the former place. Post Office address, Waynesboro', Pa. N. B. Orders can be left at the Village Recorder's Office and will receive prompt attention. April 3-17. H. W. & BRO.

FRICK & BOWMAN'S

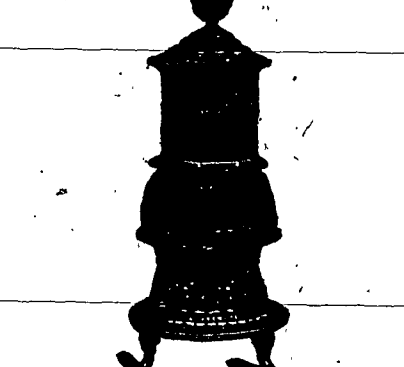


STEAM ENGINE AND BOILER WORKS,

WAYNESBORO', FRANKLIN COUNTY, PENN'A.

STATIONARY AND PORTABLE STEAM ENGINES Boilers, Tanks, and Sheet-Iron Work; Machinery's Tools, Wood Working Machinery, Shafting, Pulleys and Hangers; Gear Cutting, Portable Circular Saw-Mills, Fellie-Benders, Lumber Buzzsaws, also, Agents for Stillwell's Patent Heater, Lime Extractor and Filter, combined; Cameron & Co's Special Steam Pump; Saws of all kinds; (and Dist. manufacture) Iron Pipe and Fittings; Brass Work; Gum and Leather Belting; Manufacturers and Engineers' Supplies, generally furnished at lowest Retail Prices. All kinds of Foundry Work—heavy Light, Iron and Brass Castings—made to order; REPAIRING carefully done. For further particulars, send for Catalogue and Price List.—Waynesboro', Franklin County, Penn'a, June 29, 1871.

STOVES.



W. A. TRITLE

Offers at low prices a large number of No. 1 Cook Stoves for coal or wood the best in market, also the Celebrated Morning Glory Stoves, with and without ovens, at reduced rates. Also a number of other Base Burning Stoves—also Parlor Cook Stoves—Parlor and Fire-place Heaters, the best in market, all of which he will warrant and sell at less rates than any Stove House in Waynesboro'. He is now prepared to put up at short notice first class Brick Furnaces and warrant them. On hand a stock of nine-plate Stoves and small coal stoves. A large stock of Tin-pressed and iron-ware roofing and spouting of the best first. Repairs done promptly and at prices that none can complain. Call and see his stock as it will pay you for the trouble, and it is right these days to keep posted. Sept 14-17

A DESIRABLE PROPERTY AT Private Sale.

THE subscriber offers at Private Sale the FAIR VIEW MILL PROPERTY, situated 1 mile Southeast of Waynesboro'. This property is delightfully situated, the improvements unsurpassed, and the land is a high state of cultivation. A more desirable property of its kind is perhaps not to be found in the county of Franklin. For particulars address the subscriber at Pitston, Pa., or call on W. S. Amberson, in Waynesboro'. July 27-17. DAVID PATTERSON.

NEW TIN STORE.

THE undersigned would most respectfully inform the citizens of Waynesboro' and vicinity that he has opened a new Tin Store on East Main street, opposite Stover & Wolff's Dry Goods emporium, and keeps constantly on hand a good supply of COOK & COAL STOVES, MORNING GLORIES, &c., prices to suit the times. All kinds of work done in his line with neatness and dispatch, such as roofing, spouting and repairing. You will find it to your interest to give him a call before purchasing elsewhere. The sign of the Big Red Coffee Pot, Always on the post.—Thankful for past favors he hopes for a continuance of the same. Yours, Respectfully, nov 19 CLAYTON M. FREY.

SMALL PROPERTY FOR SALE!

THE subscriber offers at Private Sale a small Tract of Limestone Land containing 20 1/2 Acres, situated 3 miles Southwest of Waynesboro', Franklin county, Pa. The improvements consist of ONE AND A HALF STORY LOG HOUSE, and a Barn, Wood and Wash House, a never-failing well of water convenient to the house, with two cisterns to the buildings; also a good Apple Orchard with a variety of choice fruit, such as peaches, peaches, cherries, grapes, &c. aug 24-18] ANDREW SENGER.

LIVERY! LIVERY!

THE undersigned informs the public generally that he has purchased the Livery heretofore owned by Frank Wengley, and is fully prepared to meet the wants of the community in his line of business. He has had all his carriages neatly repaired and refitted, and his horses are of gentle and fast travellers. Parties conveying to any point desired, accompanied by a careful driver. Office at the Waynesboro' Hotel, where an attentive hostler will be in attendance all hours of the night and day. No effort will be spared to accommodate all who may patronize him. Dec. 17, 18. WM. FUNK.

CASH! CASH!

CHEAP Family Flour \$5.50 to \$5.75 per barrel and all kinds of Feed cheap for cash. Cash, cash all the time! September 7-17 J. ELDEN.

BARK WANTED FORNEY & SONS

will pay the highest market price for 650 cords of Rock and Black Oak Bark delivered at their Tannery in Waynesboro. Hides and Skins taken in and weighed at Adams Express Shoe Store, for which the highest market price will be paid. Room next door to S. B. Rinehart's Store. Sept 23-17

MILLINERY GOODS.

MRS. KATE G. STOVER has received full supply of Fall and Winter Millinery goods of the latest style. Ladies are invited to call and examine her assortment.

Room next door to S. B. Rinehart's Store. Sept 23-17

A WONDER OF MECHANICAL SIMPLICITY.

The Most Practical Sewing Machine in the World.

THE McLEAN & HOOPER Elastic Lock-Stitch. Our Motto is not to be undersold.

JEWELRY, WATCHES, CLOCKS, GOLD PENS, WATCH CHAINS, Finger Rings, Charms, Bracelets, and a great variety of other things pertaining to the Jewelry Business.

FAMILY SEWING MACHINE

Warranted to do the whole range of Family Sewing with more rapidity, with more ease of management and with less fatigue to the operator than any Machine now in use. PRICE FORTY (40) DOLLARS!

Requires no extra attachment for embroidery, Braiding and Gathering. It takes the thread directly from the spools, thus saving trouble and economizing time. It requires but one foot to move the treadle even in sewing the heaviest fabrics. It is made of the best steel, and at all points of wear case-hardened. Its chief points are: Unequalled Simplicity, Ease of Management, Rapidity of Execution, Non-liability to drop Stitches or break thread. Having a straight needle and the shortest in use.

Simplicity of tension, Ease of managing it, Embroidering by a mere change of spools. Braiding, gathering and embroidering without attachments. Making the best stitch for strength and durability. Making the only stitch as efficiently elastic as not to break in the ordinary strain of elastic goods. Its seam being less liable to rip in use or wear than the "Shuttle-Stitch," while it can be more easily taken out if desired.

ALEX. LEEDS, Agent, Telegraph Office, Waynesboro', Pa. July 27, 1871.

MANSION HOUSE HOTEL.

N. W. Cor. Fayette and St. Paul Streets OPPOSITE BARNUM'S CITY HOTEL, BALTIMORE, MD. Terms \$1.50 Per Day. ISAAC ALBERTSON, Proprietor, J. S. HARPER, Manager. Aug 24-17.

OMNIBUS LINE!

THE subscriber informs the public that he is proprietor of the Bus line running daily between Waynesboro' and Greencastle, heretofore run by Wolfesberger & Stoner. With good horses and a first-class four-horse Omnibus he is enabled to convey passengers to and fro with comfort and convenience. His Buss will leave Waynesboro', at 6 1/2 A. M., arriving at Greencastle at 8, making quick time and sure connection with the first Passenger train at 8 1/2 A. M. Leaves Greencastle at 5 o'clock, P. M., arriving at Waynesboro', at 6 45. He is himself Proprietor, Contractor and Driver. Delivers Adams Express matter to and from Greencastle. All Express matter expressed the same morning and through to Waynesboro' the same day it arrives. Persons wishing to send goods by Express will do well by giving him a call. Persons wishing to go to Hagerstown should take this route. The train leaves at 11 1/2 o'clock, connection with the Washington County Railroad. aug 30-17] J. R. WOLFESBERGER.

MILLINERY GOODS. MRS. KATE G. STOVER has received full supply of Fall and Winter Millinery goods of the latest style. Ladies are invited to call and examine her assortment.

Room next door to S. B. Rinehart's Store. Sept 23-17

CONCAVE CONVEX spectacles, at ALEX. LEEDS.