

The Smart and Silberberg Co.

Centre Street at Elm, Oil City, Pa.

We Want You to Know Us Better.

We want you to realize that this is your store—to feel that the long years of study and experience which we have devoted to this business, have been used with your welfare and convenience in mind.

For more than twenty years we have been constantly increasing our ability to serve you; constantly increasing a business whose growth has been rapid from the beginning, until today we can offer you the largest, best, and most varied stock of dry goods and appareling of all kinds, to be found in this section of the state. And of course, with our enviable facilities for buying in large quantities, we can make prices whose equal for modesty cannot be met for scores of miles around.

Don't take our word for it—we want you to come and let us prove it to you.

Crex Rugs and Carpetings.

A complete assortment of the original Crex matting, ideally suited for porches, summer homes and without an equal for interior service.

Crex matting by the yard comes in plain green, green with gold border, and green with black Grecian key stencilled on; 27 inches, 36 inches, 54 inches and 72 inches widths, by the yard, from 45 cents up.

Crex Rugs in these sizes—36x72 inches, 54x90 inches, 6x9 feet, 8x10 feet, 9x12 feet and 12x15 feet.

Hot and Dusty, or Cool and Shady--Which Will Your Porch be this Summer.

Decide today to install Vudor Porch Shades, and have the benefit of a cool, secluded porch this summer. And in buying, be sure that you get the best shade manufactured—look for the Vudor name-plate on every shade.

Single shades cost \$2.50 and up, according to width. The colors are plain green or brown, and green and brown combinations.

The Smart and Silberberg Co.

OIL CITY, PA.

Oil City Trust Company

Oil City, Pa.

Report to the Commissioner of Banking
(CONDENSED)
At the Close of Business, May 3, 1912.

| | | | |
|--|----------------|---------------------------|----------------|
| Time Loans..... | \$2,668,680.90 | Capital..... | \$300,000.00 |
| Real estate, furniture and fixtures..... | 70,000.00 | Surplus and Profits..... | 597,619.82 |
| Stocks and Bonds..... | \$336,832.84 | Reserve for interest..... | 2,968.93 |
| Demand Loans..... | 788,469.23 | Deposits..... | 3,781,601.18 |
| Overdrafts..... | 4,907.24 | | |
| Cash on Hand and in Banks..... | 613,510.42 | | |
| Total Quick Assets..... | 1,943,439.73 | | |
| | \$4,682,129.63 | | \$4,682,129.63 |

Trust funds not included in above, \$250,711.36. Corporate Trusts, \$1,253,000.00.
Increase in Deposits Since last Report, \$456,974.92

Shop Here At Our Expense.

TIONESTA PATRONS are allowed Car Fare one way on \$10.00 Purchases. On \$15.00 Purchases Round Trip Car Fare.

ENDEAVOR PATRONS are allowed Car Fare one way on \$10.00 Purchases. On \$20.00 Purchases Round Trip Car Fare.

That brings this \$50,000.00 stock of Dry Goods, Millinery, Cloaks and Suits to your very door and enables you to shop here with as great economy as though you actually lived right here in Oil City.

The Kinter Co.

Oil City, Pa.

KEELEY CURE
The cure that has been continuously successful for more than 22 years is worth investigating. For the drug or drink habit. Write for particulars only Keeley Institute in Western Branch, 424 Fifth Ave., Pittsburgh, Pa.

CHICHESTER'S PILLS
Ladies! Ask your Druggist for Chichester's Diamond Brand Pills in Red and Gold wrapper. Take no others. They are the only pills with Blue Ribbon. **DIAMOND BRAND PILLS**, for 50 years a name for purity, safety, always reliable. **SOLD BY DRUGGISTS EVERYWHERE**

LIFE INSURANCE POPULAR.

28,000,000 Policyholders in Old Line Companies Alone.

The number of persons in this country who make use of life insurance as a means of saving exceeds the total number who avail themselves of all other recognized modes of thrift.

If we add together the nine millions of savings bank depositors, the even millions of persons who own their own homes, the two million building and loan society stockholders and the million and three-quarters of corporation stockholders we shall have, not reckoning duplications, not more than twenty millions of investors.

Whereas, according to "Moody's Magazine," the number of persons who hold policies, ordinary and industrial, in life insurance companies, exceeds twenty-eight millions. These twenty-eight millions do not include the number of certificate holders in fraternal and assessment associations, old line or legal kind of insurance that is worth the serious attention of business men.

The total life insurance carried in the United States to-day is about \$150 a head of the population, a sum considerably greater than that of any other country in the world. The companies reporting to the New York Insurance Department had on December 31, 1910, \$14,680,268,315 insurance in force. They had a total premium income of \$533,049,595 and assets amounting to \$2,865,503,535, which represents approximately as large a sum of money as the total savings in all the banks of the country.

Wild Strawberries.

Strawberries have improved very much in flavor since the fifteenth century. Until then the only strawberries eaten were wild strawberries of a kind that would never find a market nowadays. By 1480, however, they were beginning to be cultivated, for Hollinshed records under that date a particularly fine crop grown by the Bishop of Ely in the grounds of his palace, now covered by Hatton Garden.

He quotes the Duke of Gloucester as saying to the Bishop, "My lord, you have very good strawberries in your garden in Holburn. I require you to let us have a mess of them." This speech was copied almost verbatim by Shakespeare in "Richard III." Still, even the Bishop's fruit would not appeal much to modern connoisseurs, for the garden strawberries at that period were only transplanted wildlings, the plants being sold at about 4d. a bushel.—London Chronicle.

A North African Game Bag.

Egypt and the Sudan provided a generous and various bag of game for Prince Ludwig Windischgratz and his friends, who returned from a hunting expedition in northern Africa.

The party, numbering five guns, accounted for six lions, two panthers, five elephants, six rhinoceroses, five hippopotami, fifteen buffaloes, four giraffes, one zebra, 122 antelopes, fourteen crocodiles, thirty gazelles, two hyenas, four wild dogs, two great apes, and twenty-four wild birds of different varieties.

Prince Windischgratz brought back two live young lions, which he has presented to the Budapest zoological gardens.—Budapest correspondent. Pall Mall Gazette.

A Big Maine Salmon.

What is supposed to be the largest land-locked salmon ever taken with hook and line from a Maine lake or pond was caught at Greene Lake by Luther Moore, an employee of the United States Government fish hatchery, and weighed 16½ pounds.

Nothing to equal this for a salmon has ever been heard of in eastern Maine, and so far as known now it is the biggest on record. One Bangor man said that he had heard of one weighing 15 pounds being caught with hook and line at Greene Lake, but that was in the dim and misty past.—Kennebec Journal.

Big Sailfish on French Coast.

A huge sailfish, a fish rarely met with in the Atlantic, has been captured by fishermen off Concarneau and towed to that port. The first measures eight meters long and four meters in circumference and weighs 900 tons.

The fishermen are greatly disturbed over the presence in the vicinity of the fish's female companion, who followed her captured lord throughout the whole of the night he was being towed to port.—Le Figaro.

Indianian Raises Trees for Canes.

Theodore W. Burkham, a farmer living on a large tract of fertile land near Lawrenceburg junction, has set out several hundred young trees of a peculiar variety and a number of acres will be devoted to them. When the trees have obtained sufficient growth they will be sold to be made into umbrella handles and canes.—Lawrenceburg Correspondence Indianapolis News.

Complimenting the Modern Girl.

The girl of to-day is extremely impatient of compliments which outrun her own estimate of herself. On the other hand she loves to be told she is a good golfer or a fine shot or a good companion. The focus seems to have shifted from her appearances to her capacities, which is a healthy thing.—Gentlewoman.

JAMES HASLET,
GENERAL MERCHANT
Furniture Dealer,

—AND—
UNDERTAKER.
TIONESTA, PENN.

IT PAYS TO ADVERTISE IN THIS PAPER

Chamberlain's Cough Remedy
Cures Colds, Croup and Whooping Cough.

Optometrists

and Manufacturing Opticians.

School children's eyes will be examined free of cost when accompanied by a note from their teacher or family physician.

The latest methods known to science are employed—no drops—artificial eyes in stock.

Lenses duplicated on short notice.

Morck Optical Co.,
OIL CITY, PA.
First National Bank Building,
Both Phones.

J. L. Hepler LIVERY Stable.

Fine carriages for all occasions, with first class equipment. We can fit you out at any time for either a pleasure or business trip, and always at reasonable rates. Prompt service and courteous treatment.

Come and see us.
Rear of Hotel Weaver
TIONESTA, PA.
Telephone No. 20.

You Can Make Money at Erie!

Within ten years the population of Erie, Pa., will double and real estate values will double twice over.

Read this advertisement and learn the reasons why, and how you can participate in the millions of dollars of profit that will be made here before you are ten years older.

By all means buy Erie real estate now. The advance in values has already begun and millions will be made by lucky far-sighted investors. There is nothing in the whole country to compare with Erie for opportunity.

The General Electric Company is building a huge plant to cost \$25,000,000 and to employ 18,000 men. This means an increase of 75,000 in population at least.

NICHOLSON HEIGHTS

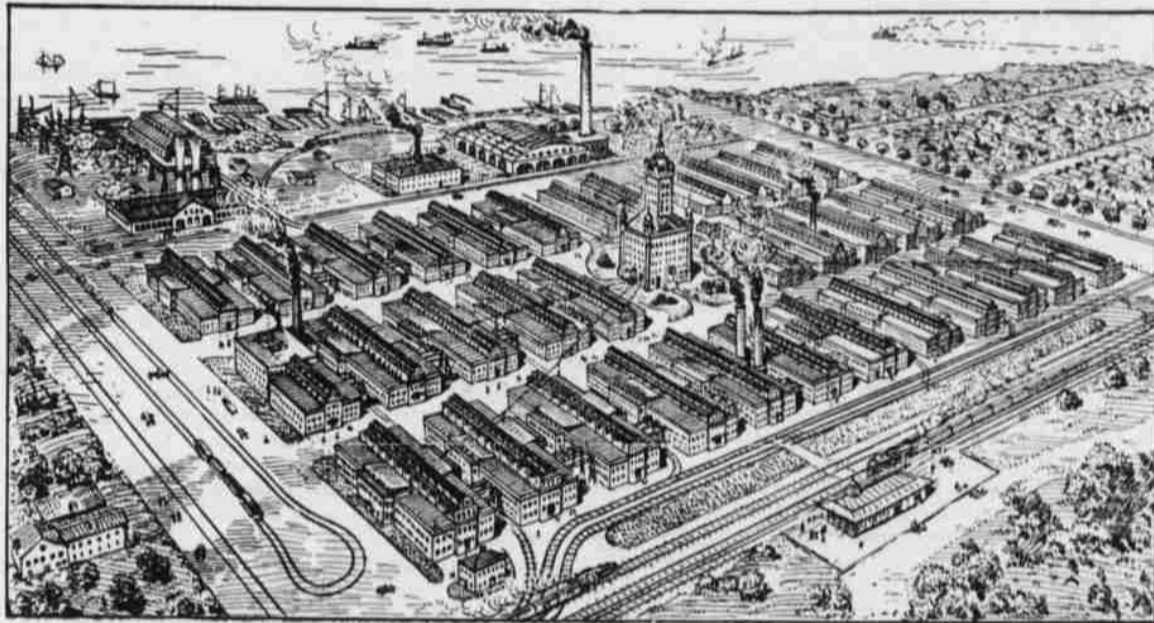
Our new addition to the city, has been improved and developed to meet this big demand for home sites.

One hundred lots have already been sold at "opening prices," \$150, \$200, \$250, \$300, and homes are now being built.

You can buy only once at low "opening prices." In a few years they will advance beyond your reach. Buy at the bottom and sell at the top. Be the one to make the profit.

Four hundred of the lots have attractive shade trees, hemlocks, pines, maples and elms.

Buyers are protected because the title of this entire sub-division has been passed to the Erie Trust Company, where all payments are sent. Do yourself the justice to investigate. Write for map and full information.



Birdseye view of the new General Electric Plant at Erie, Pa., to be erected on a site of 900 acres. Thirty-eight buildings, an administration building with Singer tower, and 40 miles of railroad tracks on the property. Will employ 18,000 men. Three of the huge buildings are already completed, a fourth is under way, and contract let for the fifth building.

Anyone can take advantage of our offer and it will appeal particularly to young people with modest incomes who are anxious to get ahead.

Invest a little of your earnings each month and you will have land for your security all the time. Land won't slump, burn up or blow away.

Give your money a chance. Don't lock it up in a bank where it only earns 4 per cent. Plant it. Things grow better outdoors. Don't procrastinate. Do it now.

Mail this Coupon today by all means.

Being Sold Exclusively by

Hughes Land & Sales Co.
Marine Bank Bldg., Erie, Pa.

\$10 Down and \$5 a month buys a lot, and in a short time you will have a piece of property worth twice what it cost you.

Information Coupon. T. R. 5-22.

Hughes Land and Sales Co., Erie, Pa.

Gentlemen:—Please mail me map, booklet and information about Nicholson Heights.

Please inform me what kind of an investment I can make by paying \$..... down and \$..... a month.

Name.....

Address.....

Pennsylvania Railroad.

POPULAR ONE-DAY EXCURSION

Oil City and Titusville.

Sunday, June 2, 1912.

SPECIAL TRAIN

| Train Leaves | Fare | Train Leaves | Fare |
|------------------------|--------|------------------------------|--------|
| Glade..... 9:43 am | \$1.00 | West Hickory..... 10:46 am | \$0.75 |
| Struthers..... 9:45 " | 1.00 | Tionesta..... 10:55 " | 75 |
| Warren..... 9:53 " | 1.00 | Oil City..... Ar. 11:22 " | |
| Irvinston..... 10:05 " | 1.00 | Titusville..... Ar. 12:20 pm | |
| Tidoute..... 10:50 " | 75 | | |

Returning Special Train leaves Titusville 8:00 p. m., Oil City 8:40 p. m. Tickets will be accepted for passage GOING and RETURNING only on SPECIAL TRAIN on day of Excursion. Baggage will not be checked. Children, between 5 and 12 years of age, half fare.

FAMILY FAVORITE LAMP OIL

No flicker, no odor, no soot. Family Favorite is the ideal oil for home use. It costs little more than inferior tank-wagon oils and yet it is triple-refined from Pennsylvania Crude Oil—the best oil made. Get Family Favorite Oil from your dealer—he has it in original barrels direct from the refineries—and enjoy the full, white flame.

WAVERLY OIL WORKS CO., Independent Refiners
Pittsburg, Pa.

Also makers of Waverly Special Auto Oil and Waverly Gasolines.

FREE 200 Page Book—tells all about oil.

TRY THE REPUBLICAN OFFICE

for your next order for Job Printing.