

REPUBLICAN TICKET.

NATIONAL.

PRESIDENT, BENJAMIN H. HARRISON, of Indiana. VICE PRESIDENT, LEVI P. MORTON, of New York.

STATE.

Judge of the Supreme Court, JAMES T. MITCHELL, Philadelphia.

COUNTY.

Assembly, CHARLES A. RANDALL. District Attorney, P. M. CLARK.

GROVEN didn't have time to go to the Gettysburg celebration. He was too busy writing humorous vetoes of private pension bills.

Any Democrat who is honestly unable to understand the Republican platform can hear of a profitable engagement by applying to the manager of the nearest dime museum.

The British History Review says: "To the majority of our readers the question will be of very great importance, as the quantity of articles manufactured and otherwise, that are now sent from British and Continental ports will be materially increased if these tariff proposals are accepted; indeed, we venture to assert that England will reap the largest share of any advantages that may arise from the adoption of the ideas now advocated by the Free-Trade party in the United States."

Cleveland in New York.

It is a fact so notorious that Cleveland did not have a majority of the votes of the State of New York in 1884 that it would seem to be the veriest foolishness to call attention to it; but in conversation with a gentleman a day or two ago, we found that there were many who believed that Cleveland received a majority of the votes in New York four years ago.

When it is remembered, too, that when Cleveland carried the electoral vote of New York by this bare plurality four years ago, he had the support of a united party and of that portion of the Republican party that believed his election would secure a purer civil service than the continued retention in power of the Republicans with Mr. Blaine as leader, and also the support of the protection Democrats of the State, who were assured by Mr. Randall that the election of Cleveland would not menace American industries, it will be seen that instead of Mr. Cleveland being a strong candidate in New York this year, he is actually weak.

Considering, then, the 1,147 plurality, the loss of the honest civil service reform vote and the loss of the protection Democrats, it will be readily seen that the probabilities of Cleveland carrying New York are not nearly so great as some of the ignorant but enthusiastic Democrats would have us believe.

more likely to give its electoral vote to the party that encourages protection, than it is to give it to the party that would hand the industries of the country over to the importers of our principal seaport cities.

Editors in Erie.

The annual excursion picnic of the Pennsylvania Editorial Association took place in Erie commencing on the 26th ult. and lasting till the 29th. A special train of six coaches left Harrisburg on the morning of the 26th on the P. & E. road and arrived in Erie that evening at dark.

The annual excursion picnic of the Pennsylvania Editorial Association took place in Erie commencing on the 26th ult. and lasting till the 29th. A special train of six coaches left Harrisburg on the morning of the 26th on the P. & E. road and arrived in Erie that evening at dark.

On the other hand, how perfectly in harmony with himself and nature, and how beautiful withal to suppose, as does Dr. Norman Kerr and others, that Christ "accomplished in a moment that which takes several months each year, the conversion of the watery sap of the vine into wine in the grape."

When it is remembered, too, that when Cleveland carried the electoral vote of New York by this bare plurality four years ago, he had the support of a united party and of that portion of the Republican party that believed his election would secure a purer civil service than the continued retention in power of the Republicans with Mr. Blaine as leader, and also the support of the protection Democrats of the State, who were assured by Mr. Randall that the election of Cleveland would not menace American industries, it will be seen that instead of Mr. Cleveland being a strong candidate in New York this year, he is actually weak.

Accident Insurance.

T. F. Ritchey, who fell on the inclined walk leading from the Court House, when it was icy last December, and fractured his wrist, had an accident policy in the Traveler's Insurance Co. The Co. paid him \$180.00 on account of the accident.

—A misstep will often make a cripple for life. A bottle of Henry & Johnson's Anicura and Oil Liment at hand, will not prevent the misstep, but used immediately it will save being a cripple.

W. C. T. U. COLUMN.

The W. C. T. U. meets the 21 and 4th Tuesday of each month, at 3 p. m. President—Mrs. E. H. Holman. Vice Presidents—Mrs. J. G. Dale, Mrs. W. J. Roberts.

Woe unto him that giveth his neighbor drink, that putteth thy bottle to him, and maketh him drunken also.

THE PAULINE PRINCIPLE OF TOTAL ABSTINENCE.

I. Cor. 8:1-13. Golden Text—Rom. 14:21. Practical application.

1. We have in this lesson the duty of total abstinence based upon the principle of regard for the welfare of others. The conclusion of the matter is given in verse 13. "Wherefore, if meat maketh my brother to stumble, I will eat no flesh forevermore, that I make not my brother to stumble."

2. Christ's making wine at Cana is often used as an excuse for moderate and refined drinking. But in the absence of positive proof as to the kind of wine Jesus made at that marriage feast, it is certainly binding upon us to interpret this act of our Lord's in the light of His character and mission.

Jesus said of himself, "Think not that I am come to destroy the law, or the prophets: I am not come to destroy, but to fulfill." Matt. 5:17. Set over against this declaration the command: "Look not thou upon the wine when it is red." Prov. 23:31.

On the other hand, how perfectly in harmony with himself and nature, and how beautiful withal to suppose, as does Dr. Norman Kerr and others, that Christ "accomplished in a moment that which takes several months each year, the conversion of the watery sap of the vine into wine in the grape."

3. But whoever may dissent from this view, none who claim allegiance to the Master and love for humanity can fail to be touched by Paul's appeal for the practice of total abstinence. Wrecks of once noble young men, encouraged in the drink habit by the example of eminent men, attest sorrowfully to the evil of moderation.

We look for fruit from this temperance teaching of the S. S. lesson all over the world as selected by the International Lesson Committee.

Is intemperance a vice? Eovings, murders, drunkenness, revellings and such like; they which do such things shall not inherit the kingdom of God.

LACTATED FOOD IS THE BEST. For Young Infants it is a perfect substitute for mother's milk, often saving life.

THE FINEST BABY FOOD, THE BEST INVALID FOOD, THE MOST PALATABLE FOOD, THE MOST NUTRITIOUS FOOD, THE MOST ECONOMICAL FOOD.

AMERICAN CYCLES.

Manufactured by Gormully & Jeffery.



C. KEMBLE & SON, AGENTS, TIONESTA, PA.

Prices and catalogues furnished on application. The Best Machines made and prices the lowest.

S. H. HASLET & SONS, GENERAL MERCHANTS.

FURNITURE.

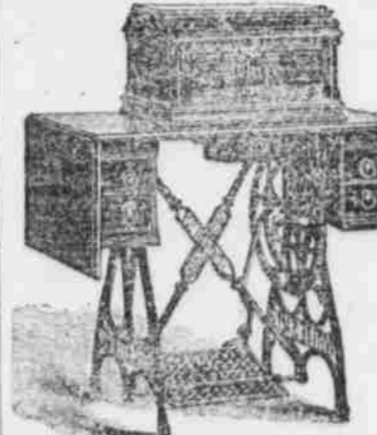
UNDERTAKERS.

Sidewalk Ordinance.

Be it enacted by the Burgess and Town Council of the Borough of Tionesta:

- 1. That a sidewalk be built on the South side of Church street from Vine street to Elm street. 2. Said sidewalk on Church street to be four (4) feet wide and to be built of 1 1/2 inch pine or hemlock boards, three (3) oak stringers three (3) inches by five (5) inches, and not less than five (5) feet, nails to be put in.

THE IMPROVED WHITE SEWING MACHINE.



THE EASIEST SELLING, THE BEST SATISFYING SEWING MACHINE ON THE MARKET. IT SELLS UPON ITS MERIT.

DEALERS WANTED. WHITE SEWING MACHINE CO., CLEVELAND, OHIO.

WANTED. RELIABLE AGENTS to sell our New High Arm Automatic Sewing Machine, The No. 9. Liberal inducements. Address WHEELER & WILSON MFG. CO., Philadelphia, Pa. Established 1848.

18 SPRING 1888

Spring has come and H. J. HOPKINS & CO. are ready to meet the demands with a Stock of Spring Goods that, to be appreciated, must be seen.

DRESS GOODS DEPARTMENT.

We have something to suit any person. Ranging in price from 10c. to \$1.00 per yard. Everything in the latest and most desirable colors.

CLOTHING, CLOTHING, CLOTHING!

Our Clothing Department has never been so completely stocked as this Spring. Our Men's Suits at \$30.00, \$20.00, and \$12.00, are BARGAINS.

SHOES, SHIRTS AND HATS.

Our assortment in this line can't be beat any place. We buy in Case Lots and know that we get the Latest Styles, and at prices that are right.

GROCERIES! GROCERIES!!

Our Record in the Grocery Business is well known to everybody, and we would just say that it has just nothing. But that we are giving it special attention this Spring, and you will find that our goods are FRESH and of the Best quality, with prices down where they belong.

H. J. HOPKINS & CO.

HERMAN & SIGGINS!

DRUGGISTS & GROCERS, TIONESTA, PENN.

THE FRESHEST GROCERIES.

In our Drug Department, which is in charge of a thoroughly competent Clerk, will always be found the

PUREST DRUGS AND CHEMICALS!

PRESCRIPTIONS COMPOUNDED WITH UTMOST CARE.

DEPARTMENT STORE.

5c., 10c., 25c., 50c., COUNTERS.

WM. SMERBAUGH & CO., TIONESTA, PA.

A PROFITABLE OPPORTUNITY FOR INVESTMENT. TALLAPOOSA, GA. THE PROGRESSIVE YOUNG CITY OF THE NEW SOUTH.

This progressive young city, which is now attracting investors, manufacturers and settlers from every section of the Union, is situated in the Piedmont section of the State of Georgia, 40 miles from Atlanta and 300 miles from Birmingham.

Residence and building lots which sold for \$300 in 1880 are now selling at \$1,000. The Tallapoosa Furnace Co. is a rapidly growing enterprise. Liberal inducements to manufacturers. Come to the South. Enormous Advance in Real Estate. Col. Geo. W. Adair, President Tallapoosa Land, Mining & Man'g Co., Tallapoosa, Ga.

KIRK'S WHITE CLOUD FLOATING SOAP. THE CHIEF. For the Bath, Toilet and Laundry. Snow White and Absolutely Pure.

Table with columns for destinations (Pittsburgh, Erie, etc.) and times. Includes 'WESTERN NEW YORK & PENNSYLVANIA RAILROAD' and 'TIMETABLE IN EFFECT MAY 25, 1888'.

WESTERN NEW YORK & PENNSYLVANIA RAILROAD. (Formerly N. Y. & P. R. R.)

ALLEGHENY VALLEY.

Most direct route to Pittsburgh. East. Only route landing passengers at Union Station without delays or transfers.

Table with columns for destinations (Pittsburgh, Erie, etc.) and times. Includes 'ALLEGHENY VALLEY' and 'Buffalo Sunday Train leaves'.