

ALLEGHENY CATTLE MARKET.

OFFICE OF PITTSBURGH GAZETTE, MONDAY, SEPT. 12, 1899.

There was a very full supply of cattle on sale to-day, well on to 1,000 head, but the market, notwithstanding, did not turn out as bad as might have been expected.

Good cattle sold fully up to last week's prices, but common cattle were dull, as there were but few country buyers in attendance.

The sales reported yesterday were 1,951 head, and of these an unusually large number were from Green, Washington, Butler, and other adjoining counties.

Ohio and Indiana were also represented, and there were several unusually fine cattle on sale, including 32 head by Haas & Krans.

Some of our best butchers, at 8 cents, has an outside price, but there has not probably been a better drive of cattle in this market this year, and this is saying a good deal.

Quotations may be fairly given at 24c for scalawags; 24c to 25c for fair to prime stockers; 26c to 27c for good to medium extra stock; and 27c to 28c for prime to extra do.

Notwithstanding the offerings were unusually large, there were but few left over unsold, and already noted, prime fat cattle sold up to last week's prices.

John Cullin had 16 head of prime Indiana steers sold; 3 head Butler county steers; 1 head 3/4 head Butler county steers; 1 head 3/4 head Butler county steers; 1 head 3/4 head Butler county steers.

Milmer 17 head Butler county steers and heifers, at 3 1/2c; 3 head 3/4 head Butler county steers; 1 head 3/4 head Butler county steers; 1 head 3/4 head Butler county steers.

Greenwald & Kahn 75 head, mostly all prime Ohio heifers and steers, 6c to 7c; Trautman & Leiman sold 62 Washington and Green county steers, at 6c.

held at 19 1/2c. Petroleum quiet and unchanged. Whisky excited at 1 1/2c. PHILADELPHIA, September 13.—Beef Cattle dull and prices a fraction lower.

BAITOMORE, Sept. 13.—Flour fair to moderate; western superior 90c, 90c, 90c. Wheat firm; red 1 1/2c.

CHICAGO, September 13.—Eastern export wheat 1 1/2c; No. 1 1/2c; No. 2 1 1/4c; No. 3 1 1/4c.

ST. LOUIS, September 13.—Tobacco steady and unchanged. Cotton quiet and unchanged.

CINCINNATI, September 13.—Flour steady and unchanged. Wheat firm but quiet.

TOLEDO, Sept. 13.—Flour quiet, steady at 1 1/2c. No. 1 1/2c; No. 2 1 1/4c; No. 3 1 1/4c.

NEW YORK, September 13.—Cotton is decidedly lower; sales 700 bales at 33c.

BUFFALO, September 13.—Flour quiet and unchanged. Wheat firm and unchanged.

LOUISVILLE, September 13.—Flour quiet and unchanged. Wheat firm and unchanged.

CLEVELAND, Sept. 13.—Flour quiet and unchanged. Wheat firm and unchanged.

PHILADELPHIA, Sept. 13.—Flour quiet and unchanged. Wheat firm and unchanged.

held at 19 1/2c. Petroleum quiet and unchanged. Whisky excited at 1 1/2c. PHILADELPHIA, September 13.—Beef Cattle dull and prices a fraction lower.

BAITOMORE, Sept. 13.—Flour fair to moderate; western superior 90c, 90c, 90c. Wheat firm; red 1 1/2c.

CHICAGO, September 13.—Eastern export wheat 1 1/2c; No. 1 1/2c; No. 2 1 1/4c; No. 3 1 1/4c.

ST. LOUIS, September 13.—Tobacco steady and unchanged. Cotton quiet and unchanged.

CINCINNATI, September 13.—Flour steady and unchanged. Wheat firm but quiet.

TOLEDO, Sept. 13.—Flour quiet, steady at 1 1/2c. No. 1 1/2c; No. 2 1 1/4c; No. 3 1 1/4c.

NEW YORK, September 13.—Cotton is decidedly lower; sales 700 bales at 33c.

BUFFALO, September 13.—Flour quiet and unchanged. Wheat firm and unchanged.

LOUISVILLE, September 13.—Flour quiet and unchanged. Wheat firm and unchanged.

CLEVELAND, Sept. 13.—Flour quiet and unchanged. Wheat firm and unchanged.

PHILADELPHIA, Sept. 13.—Flour quiet and unchanged. Wheat firm and unchanged.

RIVER NEWS. The river continues to recede steadily at the present with scant seven feet in the channel by the Monongahela marks last evening.

Business continues quite active at the levee, the offerings of freights for all boats landing seem to be getting about as much as they can handle.

The R. C. Gray, Capt. Whittaker, is filling up steadily, and will be the next to depart for Cincinnati and Louisville.

The Glendale departed for St. Louis last evening with an excellent freight list and quite a number of passengers.

The Messenger is still undergoing repairs, and consequently is not yet ready for business.

The Wild Duck, Capt. Anawalt, will take the upper route for St. Louis this evening and shippers should bear this in mind.

The Julia No. 2, arrived from Zanesville and will depart as usual to-day. The Kate Putnam from Cincinnati is due here to-day.

The New State arrived and departed for Wheeling. The St. Marys is advertised to leave Cincinnati for this port of day.

The Maggie Harps was to have left Cincinnati for Pittsburgh on Saturday.

The following boats were in port for the upper route: The Julia No. 2, the R. A. Rudolph, Wild Duck, Ironsides and Julia No. 2.

Passengers and shippers should bear in mind that the new steamer Julia No. 2, built at the yard of Messrs. McCoombs, W. F. Rudolph, Clark, is filling up rapidly.

COMMISSION MERCHANTS WILLIAM MILLER & CO., Nos. 221 and 223 Liberty Street.

Prime New Crop New Orleans Sugar and Molasses. Porto Rico, Cuba and English Island Sugars.

Also, Importers of Fine Brandy, Wines and Segars. Henrich, Mosell, and Sparkling Rock Wines.

W. M. GORMLY, WHOLESALE GROCER, No. 271 Liberty Street, PITTSBURGH, PA.

W. C. ARMSTRONG, Successor to Ficker & Armstrong, PRODUCE COMMISSION MERCHANT, No. 25 MARKET STREET.

KELLY & RITCHIE, COMMISSION MERCHANTS, FLOUR, GRAIN, FEED, &c., 349 Liberty St., Pittsburgh.

M. STEELE & SON, Commission Merchants, FLOUR, GRAIN, FEED, &c., No. 99 OHIO STREET, near East Convent, ALLEGHENY CITY, PA.

L. J. BLANCHARD, Wholesale and Retail Grocers, No. 396 PENN STREET.

J. LITTLE, HAIRD & PATTON, Dealers in Produce, Flour, Bacon, Cheese, etc., 112 and 114 SECOND STREET, PITTSBURGH.

JOHN I. HOUSE & SONS, Wholesale Grocers and Commission Merchants, 112 and 114 SECOND STREET, PITTSBURGH.

SHIPPON & WALLACE, Wholesale Grocers and Commission Merchants, 112 and 114 SECOND STREET, PITTSBURGH.

RAILROADS DENNIE & CO., NIA CENTRAL RAILROAD, SUNDAY AUGUST 20th, 1899.

Arrive: Mail Train... 1:20 am; Express... 1:30 am; Passenger... 1:40 am.

WESTERN PENNSYLVANIA RAILROAD, SUNDAY AUGUST 20th, 1899.

Arrive: Pittsburgh... 1:00 am; Erie... 1:10 am; Buffalo... 1:20 am.

ALLEGHENY VALLEY RAILROAD, SUNDAY AUGUST 20th, 1899.

Arrive: Erie... 1:00 am; Buffalo... 1:10 am; Pittsburgh... 1:20 am.

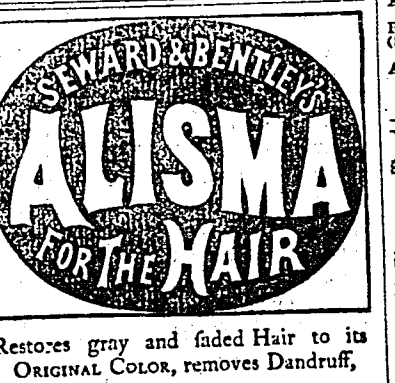
PAN HANDLE ROUTE, CHANGE OF TIME—On and after THURSDAY, August 24, 1899.

On and after THURSDAY, November 17th, 1899, trains will leave and arrive at the Union Depot.

SMOKY HILL ROUTE, COLORADO, CALIFORNIA, UTAH, ARIZONA, WASHINGTON, NEW MEXICO, IDAHO, OREGON.

ALL Points in the Territories, DENVER, SALT LAKE, AND

General Superintendent, J. H. WEBSTER, Denver, Colorado.



Restores gray and faded Hair to its ORIGINAL COLOR, removes Dandruff, CURES ALL DISEASES OF THE SCALP.

Prevents Baldness, and makes the Hair grow Soft, Glossy and Luxuriant.

Prepared by SEWARD, BENTLEY & CHENEY, Druggists, Buffalo, N.Y. Sold by all Druggists.

2,000,000 ACRES OF CHOICE LANDS FOR SALE.

Union Pacific Railroad Company, EASTERN DIVISION, Lying along the line of their road, at \$1.00 TO \$5.00 PER ACRE.

JOHN P. DEVEREUX, Land Commissioner, Topeka, Kansas, or CHAS. B. LANBORN, Sec'y, St. Louis, Missouri.

ROCK THE BABY IN EARNEST'S PATENT CRIB. SOLD ONLY BY LEMON & WEISE, Practical Furniture Manufacturers, &c., 115 FOURTH AVENUE.



TRADE MARK. DITTRIDGE'S FIRE-PROOF LAMP CHIMNEYS.

\$30,000 ALLEGHENY CITY PARK BONDS. The most reliable bonds in the market.

JAMES PARK, Jr., President, J. R. OXLEY, Secretary, SWINT & BRATT, ARCHITECTURAL AND ORNAMENTAL CARVERS.

MARSHALL'S ELIXIR. MARSHALL'S ELIXIR WILL CURE BRUISES, SWELLINGS, RHEUMATISM, GOUT, GRAVEL, NEURALGIA, MIGRAINE, HEADACHE, BRUISES, SWELLINGS, RHEUMATISM, GOUT, GRAVEL, NEURALGIA, MIGRAINE, HEADACHE.

STEAMSHIPS TO LIVERPOOL AND QUEENSTOWN. THE INDIAN MAIL STEAMSHIPS.

Importers and Retail Dealers in FINE STATIONERY, WEDDING, VISITING, PARTY AND BUSINESS MONOGRAMS, ENGRAVING, &c.

DREKA, Importers and Retail Dealers in FINE STATIONERY, WEDDING, VISITING, PARTY AND BUSINESS MONOGRAMS, ENGRAVING, &c.

100 BAGS REFINED NIT. 100 BAGS, for sale by J. W. ANFIELD.