

GAZETTE-CITY DEPARTMENT

PITTSBURGH: WEDNESDAY MORNING, FEB. 6, 1896

CONGRESS—A meeting of Council for the election of Guardians of Poor was held last evening...

IN A BAD CONTEST—The crossing at the Point in a very bad contest...

LABOR—A man named Frederick Miller was committed to jail yesterday by Mayor Adams...

PHILADELPHIA, Feb. 6.—Cotton field firmly little doing. Breadstuffs all descriptions...

RECEIVED—The President and Directors of the Pittsburgh and Steubenville Railroad Company...

RECEIVED—The President and Directors of the Pittsburgh and Steubenville Railroad Company...

RECEIVED—The President and Directors of the Pittsburgh and Steubenville Railroad Company...

RECEIVED—The President and Directors of the Pittsburgh and Steubenville Railroad Company...

TELEGRAPHIC

WASHINGTON, Feb. 6.—Senator—Mr. Clayton presented a resolution providing an appropriation for the purchase of 300 acres of land...

PHILADELPHIA, Feb. 6.—Cotton field firmly little doing. Breadstuffs all descriptions...

RECEIVED—The President and Directors of the Pittsburgh and Steubenville Railroad Company...

RECEIVED—The President and Directors of the Pittsburgh and Steubenville Railroad Company...

RECEIVED—The President and Directors of the Pittsburgh and Steubenville Railroad Company...

RECEIVED—The President and Directors of the Pittsburgh and Steubenville Railroad Company...

RECEIVED—The President and Directors of the Pittsburgh and Steubenville Railroad Company...

RECEIVED—The President and Directors of the Pittsburgh and Steubenville Railroad Company...

CONGRESSIONAL

WASHINGTON, Feb. 6.—Senator—Mr. Clayton presented a resolution providing an appropriation for the purchase of 300 acres of land...

PHILADELPHIA, Feb. 6.—Cotton field firmly little doing. Breadstuffs all descriptions...

RECEIVED—The President and Directors of the Pittsburgh and Steubenville Railroad Company...

RECEIVED—The President and Directors of the Pittsburgh and Steubenville Railroad Company...

RECEIVED—The President and Directors of the Pittsburgh and Steubenville Railroad Company...

RECEIVED—The President and Directors of the Pittsburgh and Steubenville Railroad Company...

RECEIVED—The President and Directors of the Pittsburgh and Steubenville Railroad Company...

RECEIVED—The President and Directors of the Pittsburgh and Steubenville Railroad Company...

DR. Q. McLANE'S

DR. Q. McLANE'S, a special graduate and diploma of the University of Pennsylvania...

DR. Q. McLANE'S, a special graduate and diploma of the University of Pennsylvania...

DR. Q. McLANE'S, a special graduate and diploma of the University of Pennsylvania...

DR. Q. McLANE'S, a special graduate and diploma of the University of Pennsylvania...

DR. Q. McLANE'S, a special graduate and diploma of the University of Pennsylvania...

DR. Q. McLANE'S, a special graduate and diploma of the University of Pennsylvania...

DR. Q. McLANE'S, a special graduate and diploma of the University of Pennsylvania...

DR. Q. McLANE'S, a special graduate and diploma of the University of Pennsylvania...

IMPORTANT TO EVERYBODY

FOR the last three years I have been engaged in the manufacture of a special...

FOR the last three years I have been engaged in the manufacture of a special...

FOR the last three years I have been engaged in the manufacture of a special...

FOR the last three years I have been engaged in the manufacture of a special...

FOR the last three years I have been engaged in the manufacture of a special...

FOR the last three years I have been engaged in the manufacture of a special...

FOR the last three years I have been engaged in the manufacture of a special...

FOR the last three years I have been engaged in the manufacture of a special...

EAGLE STEEL WORKS

Discontinuation. The Partnership of Holmes, McKelvey & Co. is discontinued...

Discontinuation. The Partnership of Holmes, McKelvey & Co. is discontinued...

Discontinuation. The Partnership of Holmes, McKelvey & Co. is discontinued...

Discontinuation. The Partnership of Holmes, McKelvey & Co. is discontinued...

Discontinuation. The Partnership of Holmes, McKelvey & Co. is discontinued...

Discontinuation. The Partnership of Holmes, McKelvey & Co. is discontinued...

Discontinuation. The Partnership of Holmes, McKelvey & Co. is discontinued...

Discontinuation. The Partnership of Holmes, McKelvey & Co. is discontinued...

NO TICES, & C.

The Partnership of Holmes, McKelvey & Co. is discontinued...

The Partnership of Holmes, McKelvey & Co. is discontinued...

The Partnership of Holmes, McKelvey & Co. is discontinued...

The Partnership of Holmes, McKelvey & Co. is discontinued...

The Partnership of Holmes, McKelvey & Co. is discontinued...

The Partnership of Holmes, McKelvey & Co. is discontinued...

The Partnership of Holmes, McKelvey & Co. is discontinued...

The Partnership of Holmes, McKelvey & Co. is discontinued...

JOHN M. ROBERTS

JOHN M. ROBERTS will continue the jewelry business at the same stand No. 41 Fifth Street...

JOHN M. ROBERTS will continue the jewelry business at the same stand No. 41 Fifth Street...

JOHN M. ROBERTS will continue the jewelry business at the same stand No. 41 Fifth Street...

JOHN M. ROBERTS will continue the jewelry business at the same stand No. 41 Fifth Street...

JOHN M. ROBERTS will continue the jewelry business at the same stand No. 41 Fifth Street...

JOHN M. ROBERTS will continue the jewelry business at the same stand No. 41 Fifth Street...

JOHN M. ROBERTS will continue the jewelry business at the same stand No. 41 Fifth Street...

JOHN M. ROBERTS will continue the jewelry business at the same stand No. 41 Fifth Street...

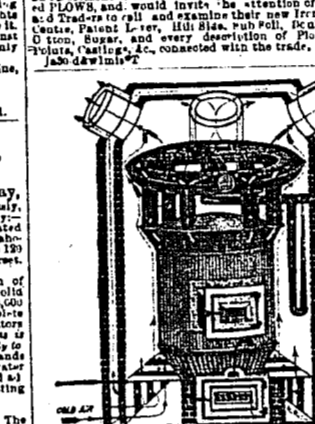


Illustration of a steam engine or industrial machinery.

Illustration of a steam engine or industrial machinery.

Illustration of a steam engine or industrial machinery.

Illustration of a steam engine or industrial machinery.

Illustration of a steam engine or industrial machinery.

Illustration of a steam engine or industrial machinery.



Illustration of a steam engine or industrial machinery.

Illustration of a steam engine or industrial machinery.

Illustration of a steam engine or industrial machinery.

Illustration of a steam engine or industrial machinery.

Illustration of a steam engine or industrial machinery.

Illustration of a steam engine or industrial machinery.

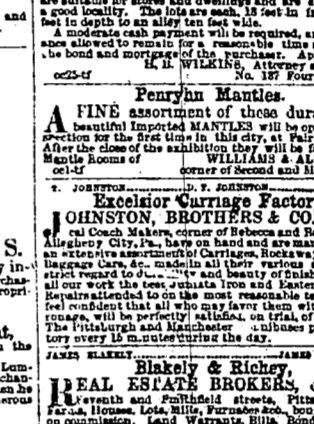


Illustration of a steam engine or industrial machinery.

Illustration of a steam engine or industrial machinery.

Illustration of a steam engine or industrial machinery.

Illustration of a steam engine or industrial machinery.

Illustration of a steam engine or industrial machinery.

Illustration of a steam engine or industrial machinery.

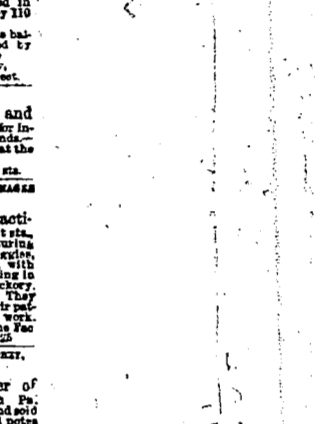


Illustration of a steam engine or industrial machinery.

Illustration of a steam engine or industrial machinery.

Illustration of a steam engine or industrial machinery.

Illustration of a steam engine or industrial machinery.

Illustration of a steam engine or industrial machinery.

Illustration of a steam engine or industrial machinery.