

The Republican County Convention...

The Republican County Convention...

The Republican County Convention...

The Republican County Convention...

The Republican County Convention...

The Republican County Convention...

The Republican County Convention...

The Republican County Convention...

The Republican County Convention...

The Republican County Convention...

The Republican County Convention...

The Republican County Convention...

The Republican County Convention...

The Republican County Convention...

The Republican County Convention...

The Republican County Convention...

The Republican County Convention...

The Republican County Convention...

The Republican County Convention...

The Republican County Convention...

The Republican County Convention...

The Republican County Convention...

The Republican County Convention...

The Republican County Convention...

The Republican County Convention...

The Republican County Convention...

The Republican County Convention...

The Republican County Convention...

The Republican County Convention...

The Republican County Convention...

The Republican County Convention...

The Republican County Convention...

The Republican County Convention...

The Republican County Convention...

The Republican County Convention...

The Republican County Convention...

The Republican County Convention...

The Republican County Convention...

The Republican County Convention...

The Republican County Convention...

The Republican County Convention...

The Republican County Convention...

The Republican County Convention...

The Republican County Convention...

The Republican County Convention...

The Republican County Convention...

The Republican County Convention...

The Republican County Convention...

The Republican County Convention...

The Republican County Convention...

The Republican County Convention...

The Republican County Convention...

The Republican County Convention...

The Republican County Convention...

The Republican County Convention...

The Republican County Convention...

The Republican County Convention...

Republican County Convention.

The Republican County Convention...

The Republican County Convention...

The Republican County Convention...

The Republican County Convention...

The Republican County Convention...

The Republican County Convention...

The Republican County Convention...

The Republican County Convention...

The Republican County Convention...

The Republican County Convention...

The Republican County Convention...

The Republican County Convention...

The Republican County Convention...

The Republican County Convention...

The Republican County Convention...

The Republican County Convention...

The Election in Maine.

Portland, Me., September 11.—Robie (Republican) is elected by 7,500 to 9,000 plurality.

Portland, September 11.—One hundred townships in Portland give Robie 6,272 plurality, a Republican gain of 2,708.

Portland, September 11.—Two hundred towns give Robie 7,937 plurality, a Republican gain of 5,114.

A Great Bridge. Tuesday last Aug. 23, 1882, was signalized by the practical completion of one of the most stupendous engineering feats ever attempted.

The Chairman of the convention, on motion appointed the committee for the three townships, Horton, Jay, and Millstone, which were not represented.

On motion of E. Hovenkamp the county committee was empowered to appoint the Congressional and Senatorial conference.

The chairman suggested that a committee on rules for the government of the party in the county should be appointed.

W. C. Spafford, of St. Marys, thought no rules were necessary, and all that was needed was to work for the party in a legitimate manner.

Mr. Hovenkamp was of the opinion that rules were necessary, and gave as one reason that the new law governing primary elections referred to the rules of the party in the county.

The chairman suggested that where there is no law there can be no offense. On motion the convention then adjourned sine die.

Personal.—Miss Kate Gresh is teaching the Robie school for the winter term.

—Frank Stettin left town on Monday to be absent for several weeks.

—Barney Mullin has the frame of his house up, at the west end of South street.

—The two Misses Murphy, daughters of J. L. Murphy, of Wilcox, were in town this week.

—Misses Ella Kime, and Jennie Hall, departed today for Media, Delaware county, where they will attend a Ladies' Seminary.

—Rev. J. Traggitt, of Emanuel Church, Emporium, will officiate in Grace P. E. Church, on Sunday next, at 10 A. M. and 7 P. M.

Sheriff's Sale.

BY VIRTUE OF SUNDRY writs of fieri facias, alias fieri facias, venditioni exponas, levati facias, and testamento fieri facias issued out of the Court of Common Pleas of Elk County, and to me directed, I THOMAS SULLIVAN, High Sheriff of said county, do hereby give notice that I will expose to public sale or outcry at the Prothonotary's office, in Ridgway, at one o'clock P. M., on

MONDAY, SEPTEMBER 18th, 1882, the following described real estate, to-wit: All the right, title, interest, claim and demand whatsoever of defendant B. B. Wilson of all those certain two town lots situate on the east side of Walnut street, in the borough of St. Marys county of Elk and State of Pennsylvania, described as follows, to-wit: Beginning at a post at the southeast corner of Walnut and Mill street; thence along said Walnut street south one hundred and sixty feet to a post; thence east one hundred and fifty-five feet to a post; thence north one hundred and sixty feet to a post on the south side of Mill street; thence along said Mill street in a westerly direction one hundred and fifty-five feet to the place of beginning. The said lots contain two thousand and four hundred square feet each, they being lots Nos. 4 and No. 9 on Walnut street, each lot being ninety feet front by one hundred and fifty-five feet deep. A two-story frame house, 1 1/2 stories high, is erected thereon.

Seized and taken in execution as the property of George H. Everitt, at the suit of B. F. Sherwood.

ALSO—All the right, title, interest, claim and demand whatsoever of defendant B. B. Wilson, or out of the following described real estate: All that piece parcel or lot of land situate in the township of Benetize and village of Benetize, county of Elk and State of Pennsylvania, commencing at a point on Front street one hundred and eighty feet from a sandstone corner deeply set at the junction of the road leading from Trout Run to Benetize, and thence north twenty-three degrees west along said street sixty feet to corner; thence north sixty-seven degrees east one hundred and fifty feet to alley; thence along said alley south twenty-three degrees west one hundred and fifty feet to corner; thence north sixty-seven degrees west one hundred and fifty feet to the place of beginning, containing about nine thousand superficial feet, upon which is erected one two-story frame house, 20x34 feet, with kitchen attached 16x24 feet, on frame barn, 40x20 feet, and other out-buildings; also, good well of water.

Seized and taken in execution as the property of H. D. Derr, at the suit of Annela Derr.

TERMS OF SALE.—The following must be strictly complied with when the property is struck off: All bids must be paid in full except by the plaintiff or other creditor becomes the purchaser, in which case the costs on the writs must be paid, as well as all liens prior to that of the purchaser, and a duly certified list of liens shall be furnished, including mortgage searches on the property sold, together with such lien creditor's receipt for the amount of the proceeds of the sale, or such proportion thereof as he shall appear to be entitled to.

All sales not settled immediately will be continued until six o'clock P. M., at which time all property not settled will again be put up and sold at the expense and risk of the person to whom it was first struck off; who, in case of deficiency at such resale, shall make good the same, and in no instance will the deed be presented in court for confirmation, unless the bid is actually settled for with the Sheriff as above stated.

THOMAS SULLIVAN, Sheriff, Sheriff's Office, Ridgway, Pa., May 4, 1882.

See Purdon's Digest, 9th edition, page 446, Smith's Forms, page 384.

LIST OF CAUSES. SET down for trial at the September Term of the Court of Common Pleas of Elk County, commencing on Monday, the 18th:

1. Frank Pollman vs. Morgester & Jackson, No. 75, September Term, 1879.

2. Daniel Euter et al. vs. C. R. Earley et al. No. 45, January Term, 1881.

3. The Township of Fox vs. Michael Birchm et al. No. 84, January Term, 1881.

4. Edward M. Bide vs. The Lycoming Fire Insurance Company, No. 47, May Term, 1881.

5. Jerome Powell vs. George Proctor, No. 51, May Term, 1881.

6. James S. Greves, assignee, etc., vs. Michael Waldert, No. 8, January Term, 1882.

The Election in Maine.

Portland, Me., September 11.—Robie (Republican) is elected by 7,500 to 9,000 plurality.

Portland, September 11.—One hundred townships in Portland give Robie 6,272 plurality, a Republican gain of 2,708.

Portland, September 11.—Two hundred towns give Robie 7,937 plurality, a Republican gain of 5,114.

A Great Bridge. Tuesday last Aug. 23, 1882, was signalized by the practical completion of one of the most stupendous engineering feats ever attempted.

The Chairman of the convention, on motion appointed the committee for the three townships, Horton, Jay, and Millstone, which were not represented.

On motion of E. Hovenkamp the county committee was empowered to appoint the Congressional and Senatorial conference.

W. C. Spafford, of St. Marys, thought no rules were necessary, and all that was needed was to work for the party in a legitimate manner.

Mr. Hovenkamp was of the opinion that rules were necessary, and gave as one reason that the new law governing primary elections referred to the rules of the party in the county.

The chairman suggested that where there is no law there can be no offense. On motion the convention then adjourned sine die.

Personal.—Miss Kate Gresh is teaching the Robie school for the winter term.

—Frank Stettin left town on Monday to be absent for several weeks.

—Barney Mullin has the frame of his house up, at the west end of South street.

—The two Misses Murphy, daughters of J. L. Murphy, of Wilcox, were in town this week.

—Misses Ella Kime, and Jennie Hall, departed today for Media, Delaware county, where they will attend a Ladies' Seminary.

—Rev. J. Traggitt, of Emanuel Church, Emporium, will officiate in Grace P. E. Church, on Sunday next, at 10 A. M. and 7 P. M.

Register's Notice.

Notice is hereby given that the following account will be presented at the next term of the Orphan's Court for confirmation:

1. The account of Elias Moyer executor of the last will and testament of Conrad Moyer, late of Fox town, Elk county, Pa.

2. Supplementary account of Hezekiah Horton, guardian of the minor children of C. A. Wilcox, late of Horton township, Elk county, deceased.

FRED. SCHENING, Register.

Administrator's Notice.

Notice is hereby given that letters of administration on the estate of Caroline W. Winslow, late of Benetize township, Elk county, Pa., deceased, have been granted to the undersigned.

All persons indebted to said estate are requested to make prompt payment, and those having claims will present them for settlement.

JULIUS JONES, Adm'r.

GOLDEN STAR OIL STOVE. STILL LEADS THE WORLD. 50,000 IN USE! Uses Ordinary Kerosene. Bakes and Cooks Equal to any Cook Stove. SEND FOR NEW CIRCULAR.

Woodhams Windmill. UNQUALIFIED FOR POWER, SIMPLICITY AND DURABILITY. EVERY MILL FULLY WARRANTED.

THE GREAT BURLINGTON ROUTE. PRINCIPAL LINE. THE SHORTEST, QUICKEST AND BEST LINE TO ST. JOSEPH, MO. AND ALL PLACES IN IOWA, KANSAS, NEBRASKA, MISSOURI, ARIZONA, TEXAS, NEW MEXICO, ARIZONA, MONTANA, IDAHO AND CALIFORNIA.

PERFECTION STOCK TANK. WATER-TIGHT AND FROST-PROOF. These tanks are constructed of three-inch lumber, selected Michigan pine, and are built together with improved Log hoops arranged so that they clamp up with a common wrench.

Business Cards.

BEO. A. RATHBUN, ATTORNEY-AT-LAW. Main street, Ridgway, Elk Co., Pa.

HALL & M'CAULEY, ATTORNEY-AT-LAW. Office in new brick building, Main street, Ridgway, Elk Co., Pa.

J. S. BARDWELL, PHYSICIAN AND SURGEON. Over twenty-five years practice. Office on Main Street, Ridgway, Pa.

W. L. WILLIAMS, PHYSICIAN AND SURGEON. Corner of Elk Co., office in rear of Eerley's Drug Store, next to Hyde House.

G. G. MESSENGER, DRUGGIST & PHARMACEUTIST. N. W. corner of Main and Mill streets, Ridgway, Pa.

J. D. WOODRUFF, M. D., PHYSICIAN AND SURGEON. Office on Main Street, Ridgway, Pa.

W. H. SCHRAM, Proprietor, Ridgway, Elk county, Pa. Thankful for the patronage heretofore so liberally bestowed upon him.

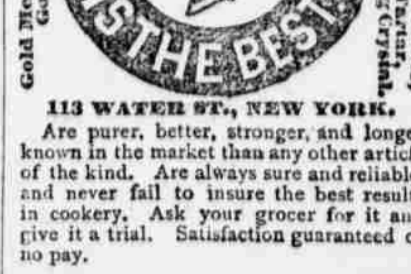
RIDGWAY. GOOD STOCK, GOOD CARRIAGES. and Buggies to let upon the most reasonable terms.

Buy the Celebrated YALE & JUBILEE ORGANS. The Best, Most Celebrated, Tunes, Tone, Most Durable, Most Simple, Most Perfect Organ in the world.



J. MONROE TAYLOR, ESTABLISHED 1844. Gold Medal First Prize, Philadelphia, 1876. Gold Medal First Prize, London, 1882.

GOLD MEDAL IS THE BEST. 113 WATER ST., NEW YORK. Are purer, better, stronger, and longer known in the market than any other article of the kind.



THE HULL VAPOR COOK STOVE, THE OLDEST AND ONLY RELIABLE. It is the only device of its kind that has stood the test of 35 YEARS, and earned universal public commendation.

FOR SUMMER USE THEY ARE INDISPENSABLE. Reliable Agents wanted in unoccupied territory. Address: HULL VAPOR STOVE CO., Success Street, cor. Campden, Cleveland, Ohio.