

Perry County Bank! Sponsler, Junkin & Co.

THE undersigned, having formed a Banking Association under the above name and style, are now ready to do a General Banking business at their new Banking House, on Centre Square,

OPPOSITE THE COURT HOUSE, NEW BLOOMFIELD, PA.

We receive money on deposit and pay back on demand. We discount notes for a period of not over 60 days, and sell Drafts on Philadelphia and New York.

On time Deposits, five per cent. for any time over four months; and for four months four per cent.

We are well provided with all and every facility for doing a Banking Business; and knowing, and for some years, feeling the great inconvenience under which the people of this County labored for the want of a Bank of Discount and Deposit, we have determined to supply the want, and this being the first Bank ever established in Perry county, we hope we will be sustained in our efforts, by all the business men, farmers and mechanics.

This Banking Association is composed of the following named partners:

- W. A. SPONSLER, Bloomfield, Perry county, Pa.
H. F. JUNKIN, " " " " " " " "
A. G. MILLER, Shippensburg, Cumberland co., Pa.
JOHN WONDERLICH, " " " " " " " "
HENRY RUBY, " " " " " " " "
WM. H. MILLER, Carlisle, " " " " " " " "

OFFICERS: W. A. SPONSLER, President. WILLIAM WELLS, Cashier. New Bloomfield, 3 5 17

WAR CLAIM AND Insurance Agency!

THE undersigned, is Agent for the following well-known Insurance Companies

- AETNA, Of Hartford, Connecticut.
NORTH AMERICAN, Of Philadelphia, Pa.
HOME, Of New Haven, Connecticut.
FARMER'S MUTUAL, Of York County, Pa.
Pennsylvania Horse Thief Detecting AND Insurance Company, Of York County, Pa.

If you have a House, Barn or Furniture that is not Insured against Loss by Fire or a Horse that is not insured against loss by theft or death, call on or write at once to the undersigned.

Also Pensions, Bounties and all kinds of War Claims Collected

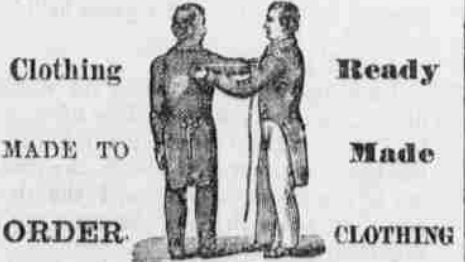
If you have a claim against the Government or have made application for Pension or Bounty, which you have not received, call on or write to the undersigned at once.

LEWIS POTTER, War Claim and Insurance Agency, NEW BLOOMFIELD, PA. Bloomfield, January 1, 1869.—3. 2. 1y

CLOTHING MADE TO ORDER!

A CHOICE ASSORTMENT OF CASSIMERES.

Always on hand, from which to select.



READY-MADE CLOTHING of Superior Quality always on hand. F. Mortimer & Co., New Bloomfield, Pa. March 16, '69.

BALLOU'S MONTHLY MAGAZINE.

THE greatest success is attending the publication of BALLOU'S MONTHLY MAGAZINE of any periodical in the world. Each number contains ONE HUNDRED PAGES of the choicest stories, Poems and Engravings, or TWELVE HUNDRED PAGES every year for \$1.50—being fully three-fourths as large as any of the four-dollar Magazines, at about one-third their price.

THE BEST IN USE

THE PARHAM NEW FAMILY Sewing Machine



It combines all the best features of other good machines, with New and Valuable Improvements, which make it THE EASIEST AND MOST QUIET RUNNING as well as the Most Simple Machine in Use.

- IT WILL HEM.
IT WILL BRAID.
IT WILL TUCK.
IT WILL GATHER.
IT WILL QUILT.

and will use either Silk, Cotton, or Linen Thread with equal ease.

It uses a straight needle and makes a stitch ALIKE ON BOTH SIDES. The principal office of the company is at No. 704 Chestnut Street, PHILADELPHIA.

These machines are for sale in Perry County by JAMES L. DIVEN, Landisburg. F. MORTIMER & CO., New Bloomfield.

The public are invited to call at either of the above places and see a Machine in operation.

GREAT DISTRIBUTION By the Metropolitan Gift Co. Cash Gifts to the Amount of \$500,000. Every Ticket Draws a Prize.

5 Cash Gifts, each \$20,000 40 Cash Gifts, each \$1000
10 " " 10,000 200 " " 500
20 " " 5000 1300 " " 100
50 Elegant Rosewood Pianos, each \$300 to \$750
75 Melodions, " 75 to 100
150 Sewing Machines, " 60 to 175
500 Gold Watches, " 75 to 200
Cash Prizes, Silver Ware, &c., valued at \$1,000,000.

A chance to draw any of the above prizes for 25c. Tickets describing Prizes are mailed in Envelopes and well indexed. On receipt of 25c. a Sealed Ticket is drawn without choice and sent by mail to any address. The prize named upon it will be delivered to the ticket-holder on payment of One Dollar.—Prizes are immediately sent to any address by express or return mail. You will know what your Prize is before you pay for it. Any Prize exchanged for another of same value. No Blanks. Our patrons can depend on fair dealing.

REFERENCES:—We select the following from many who have lately drawn Valuable Prizes and kindly permitted us to publish them: Andrew J. Burns, Chicago, \$10,000; Miss Clara S. Walker, Baltimore, Piano, \$800; James M. Matthews, Detroit, \$5,000; John T. Andrews, Savannah, \$5,000; Miss Agnes Simmons, Charleston, Piano, \$600. We publish no names without permission.

OPINIONS OF THE PRESS:—"The firm is reliable, and deserve their success."—Weekly Tribune, May 8. "We know them to be a fair dealing firm."—N. Y. Herald, May 28. "A friend of ours drew a \$500 prize, which was promptly received."—Daily News, June 3.

Send for Circular. Liberal Inducements to Agents. Satisfaction guaranteed. Every package of Sealed Envelopes contains ONE CASH GIFT. Six Tickets for \$1; 13 for \$2; 35 for \$5; 110 for \$15. All letters should be addressed to JACKSON MOORE & CO., 344 3m 57 Broadway, New York.

SHAWLS! A Splendid Assortment of SHAWLS For Fall and Winter Wear are now offered by the subscriber at very LOW PRICES. CALL AND EXAMINE THE STOCK. F. MORTIMER & CO., New Bloomfield.

The Real Excellence and Cheapness of our Clothing is the only secret of our great success.



Advertisement for 'BEST MATERIALS WELL CUT WELL MADE GUARANTEED LOWEST PRICED' with descriptive text about ready-made clothing quality and prices.

FALL AND WINTER OF 1869. GREATEST PREPARATIONS YET.

Numberless Garments, Endless Variety, Choicest Selections, Goods to Wear Well, Standard Styles, Latest Fashions, New Furnishing Goods.

CUSTOM DEPARTMENT AND DEPARTMENT FOR BOYS' AND YOUTHS' WEAR

Are especially well prepared to give satisfaction. New and Better Cutters, Improved System, Greater Dispatch, A Finer Line of Goods than ever, School Clothes, Sunday Clothes, Many New Styles, Wearing Qualities Unequaled.

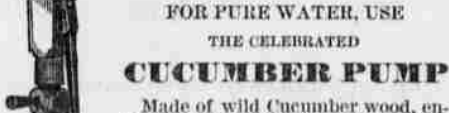
OAK HALL BUILDINGS THE LARGEST IN THE STATE.

S. E. cor. 6th & MARKET STS., PHILADELPHIA. (Embracing whole block on 6th from Market to Minor.

WANAMAKER & BROWN.

PUMPS! PUMPS! FOR PURE WATER, USE THE CELEBRATED CUCUMBER PUMP

Made of wild Cucumber wood, entirely tasteless, durable and reliable; the good old-fashioned wooden pump, made by machinery, and therefore perfect and accurate in all its parts, raising an equal amount of water, and costing less than half the money.



Best and Cheapest. CHARLES G. BLATCHLEY, MANUFACTURER. Office and Ware-room, Nos. 624 and 626 Filbert Street, PHILADELPHIA, PA.

MUSLINS!

- 10—4 Sheeting Muslin,
9—8 Sheeting Muslin,
5—4 Pillow Case Muslin,
42 Inch Pillow Case Muslin,
4—4 Sheeting Muslin,
3—4 Shirting Muslin,
9—4 Sheeting Linen,

For sale at the lowest price by, F. Mortimer & Co., New Bloomfield.

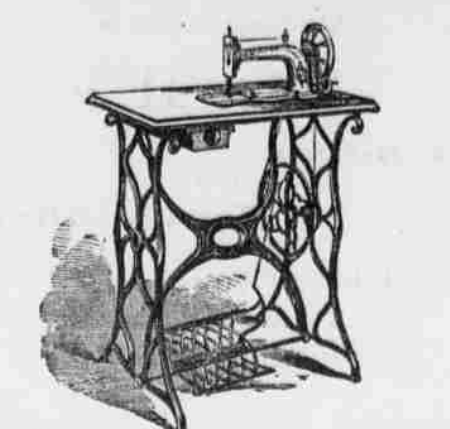
1870. THE BLOOMFIELD TIMES CALENDAR.

Calendar table showing days of the week and dates for each month from January to December.

Professional Cards.

- B. P. McINTIRE Attorney at Law, and District Attorney of Perry county, Office with C. J. T. McIntire, New Bloomfield, Penn'a.
W. M. N. SEIBERT, Attorney-at-Law, New Bloomfield, Perry co., Pa.
W. M. M. SUTCH, Attorney-at-Law, and Military Claim Agent, New Bloomfield, Perry co., Pa.
W. M. A. SPONSLER, Attorney-at-Law, Office adjoining his residence, on East Main street, New Bloomfield, Perry co., Pa.—3 2 ly.
S. H. GALBRAITH, Attorney-at-Law, New Bloomfield, Perry co., Pa.
C. LEE MURRAY, Attorney-at-Law, and Real Estate Agent, New Bloomfield, Perry co., Pa.
CHAS. A. BARNETT, Attorney-at-Law, New Bloomfield, Perry co., Pa.
E. C. LONG, Attorney-at-Law, New Bloomfield, Perry co., Pa.
CHAS. J. T. McINTIRE, Attorney-at-Law, New Bloomfield, Perry co., Pa.
LEWIS POTTER, Attorney-at-Law, New Bloomfield, Perry co., Pa.
JOHN G. SHATTO, Surgeon Dentist, New Bloomfield, Perry co., Pa.

OUR NEW FAMILY SEWING MACHINE.



THE SUPERIOR MERITS OF THE "SINGER" Machines over all others, for either Family use or Manufacturing purposes, are so well established and so generally admitted, that an enumeration of their relative excellences is no longer considered necessary.

NEW FAMILY MACHINE which has been brought to perfection regardless of time, labor, or expense, is now confidently presented to the public as incomparably the BEST SEWING MACHINE IN EXISTENCE.

Simple, Compact, Durable and Beautiful. It is quiet, light running, and capable of performing a range and variety of work never before attempted upon a single Machine.

The Singer Manufacturing Company, 458 Broadway, New York. PHILADELPHIA OFFICE: 1106 Chestnut Street. JOHN R. SHULER, Agent in NEW BLOOMFIELD, PA. January 1, 1869.—1y.

KITCHEN CRYSTAL SOAP.

HOUSE KEEPERS will find the KITCHEN CRYSTAL SOAP A great help in cleaning their houses. It is the Original and Only Genuine.

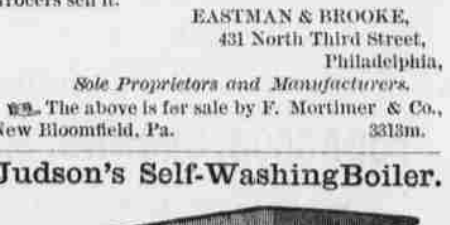
Paint Cleaner and Restorer, and will clean more paint and do it better than any other soap Ever Made!

It will clean and polish Marble. It will clean and brighten Fine Brass, Copper and all Metallic Ware, and will remove all Paint, Pitch, Tar, Grease, Ink, Varnish or any other dirt from the hands. It is the only Soap for cleaning Windows or any kind of FARTHERN WARE.

THE GREAT LABOR-SAVING KITCHEN CRYSTAL SOAP! Try it and you will like it. Ask for the "Kitchen Crystal Soap," and take no other. All Grocers sell it.

EASTMAN & BROOKE, 431 North Third Street, Philadelphia, Sole Proprietors and Manufacturers.

Judson's Self-Washing Boiler. THE BEST WASHING-MACHINE in existence. It saves 3/4 time, nearly all the labor, 1/4 the soap and more than 1/2 the wear of clothes.



Other papers wishing to insert this advertisement will please address F. E. Thurston, Advertising Agent, 2500 Lancaster Avenue, Philadelphia.